

# Brooke

CHARMING FLORALS FOR EVERY DAY



Project from Indygo Junction: IJ941 Ruffle Trio Large




Project from Jaybird Quilts: Candy Dish Pillow

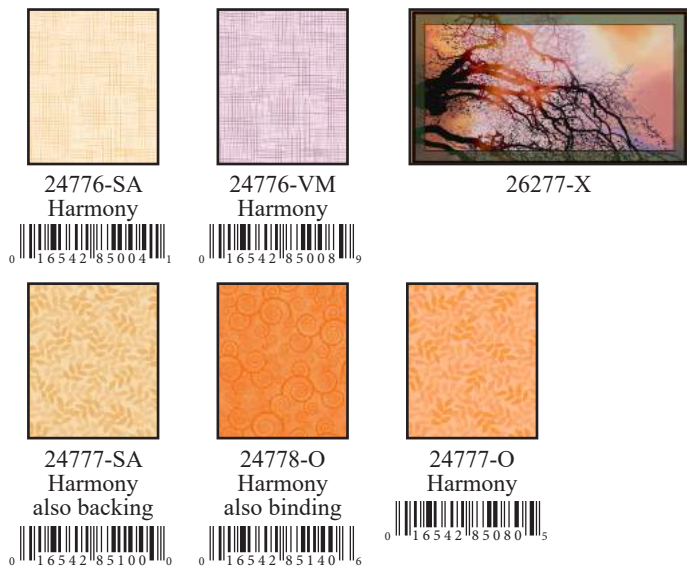


Images are for inspiration only unless otherwise noted. Similar projects can be found online.



Approximate Quilt Size: 34" x 54"  
Designed by: Heidi Pridemore

KIT CALCULATIONS		
At Dawn Yardage		12 KITS
Size: 34" x 54" SKU: P35991 ALL 	YARDS	BOLTS
26277-X (1 Panel)	2/3	1
24776-SA *	1/2	1
24776-VM*	1/3	1
24777-SA *	1	1
24778-O* (includes binding)	1	1
24777-O*	1/3	1
24777-SA* (Backing)	1 7/8	2
*Harmony based on 12 yard bolts		
Number of bolts is based on continuous cuts		
<b>Note:</b> Backing yardage is based on using one width of fabric. Increase yardage if you prefer a larger backing for your quilt.		

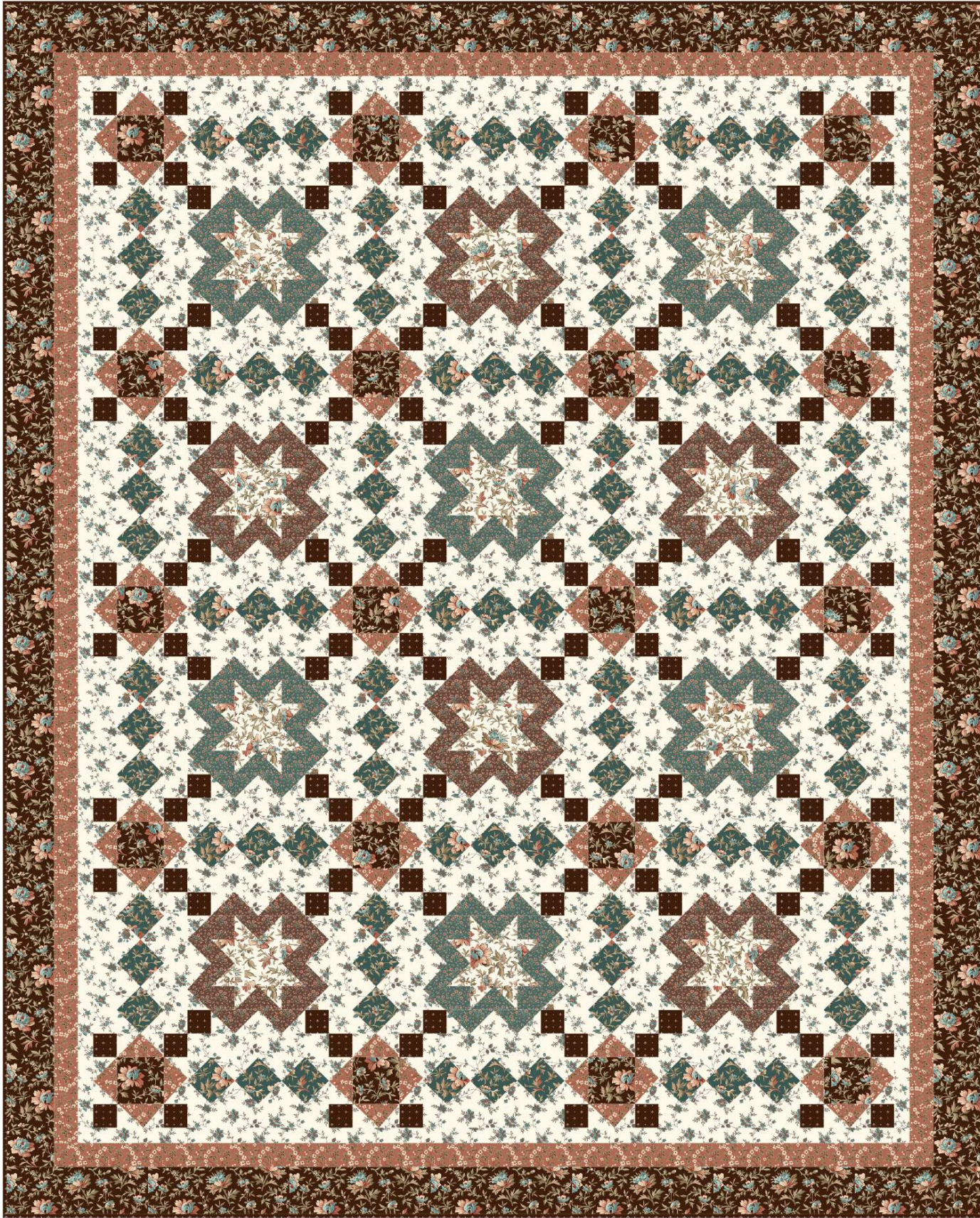


**Note:** Yardage amounts shown are calculated based on standard editorial guidelines and feature commonly used cuts. Please refer to the cutting information for the exact size of each piece. You will want to base your kit fee on the piece cuts rather than the full yardage amount. As always, we recommend that you make a shop sample prior to creating any kit.

Please note that these yardage amounts are the designer's estimates only. Some changes may occur when the project instructions are written.

Wholesale and retail patterns available at:  
Pine Tree Country Quilts  
PO 343 • Stillwater, ME 04489  
(207) 827-3876 • www.pinetrecountryquilts.com


Distributor sales:  
Checker Distributors  
www.checkerdist.com  
(800) 537-1060

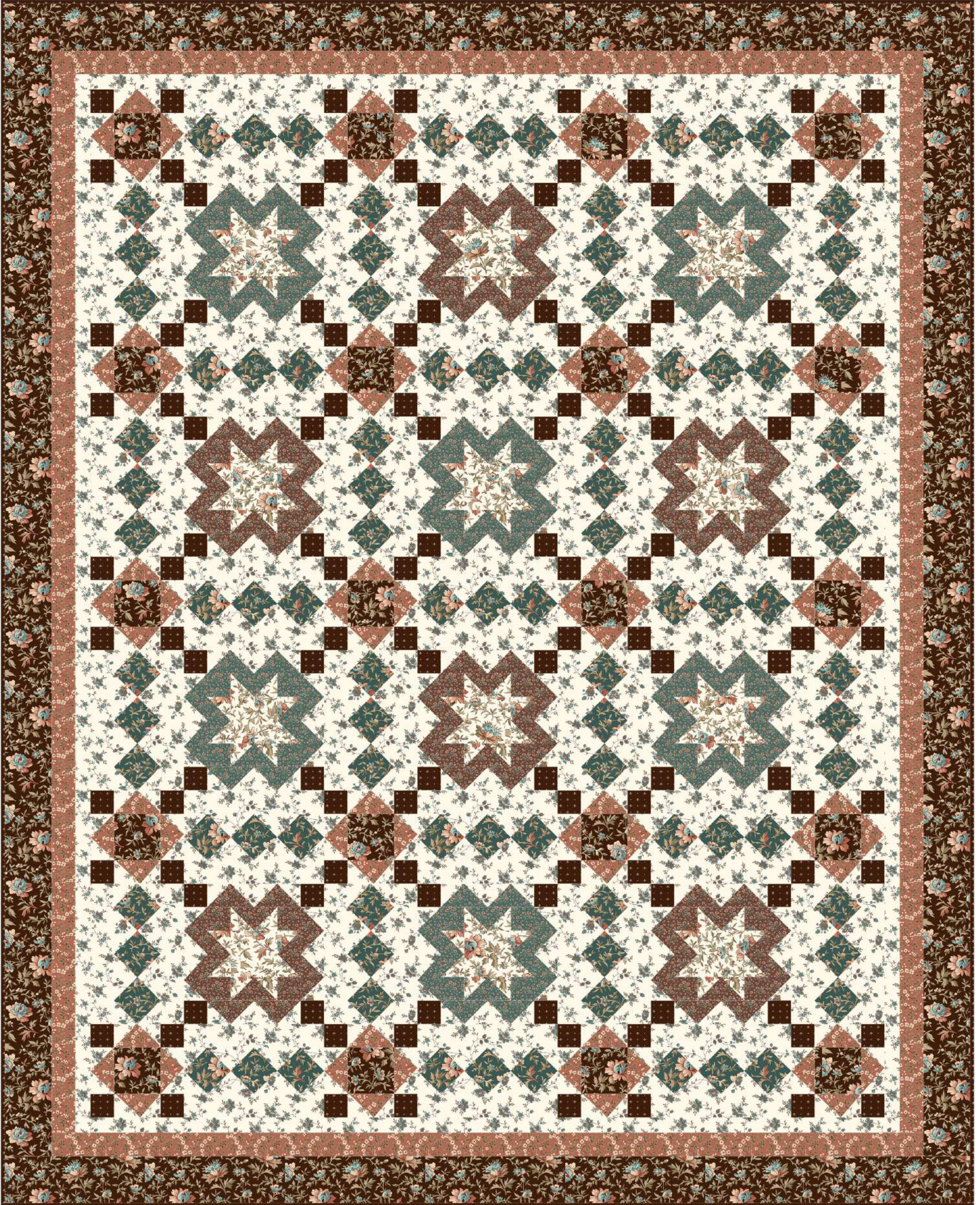


Quilt Designed by Sue Harvey & Sandy Boobar  
62" x 77"

**Pattern Number: PT1621**  
**Retail Price: \$9.00**

Pattern cover will reflect the image of this quilt

KIT CALCULATIONS		
Bethel Quilt	YARDS	12 KITS
62" x 77"		BOLTS
UPC is for fabric only, Does not include pattern	P3593 ALL 	
26245 A	1 1/8	1
26245 E	1/2	1
26245 Q	5/8	1
26247 E	2 7/8	3
26248 T	1	1
26249 A	1/2	1
26249 Q	1/2	1
26250 A (includes binding)	1 1/4	1
26246 A (backing only)	4 7/8	4



Quilt Designed by Sue Harvey & Sandy Boobar  
62" x 77"



Patterns may be ordered directly from:  
Cozy Quilt Designs  
orders@cozyquilt.com • 619-760-1516

Patterns may also be ordered from these distributors:  
Checker, Brewer, EE Schenck, United Notions,  
Petersen-Arne, Quiltsource Canada

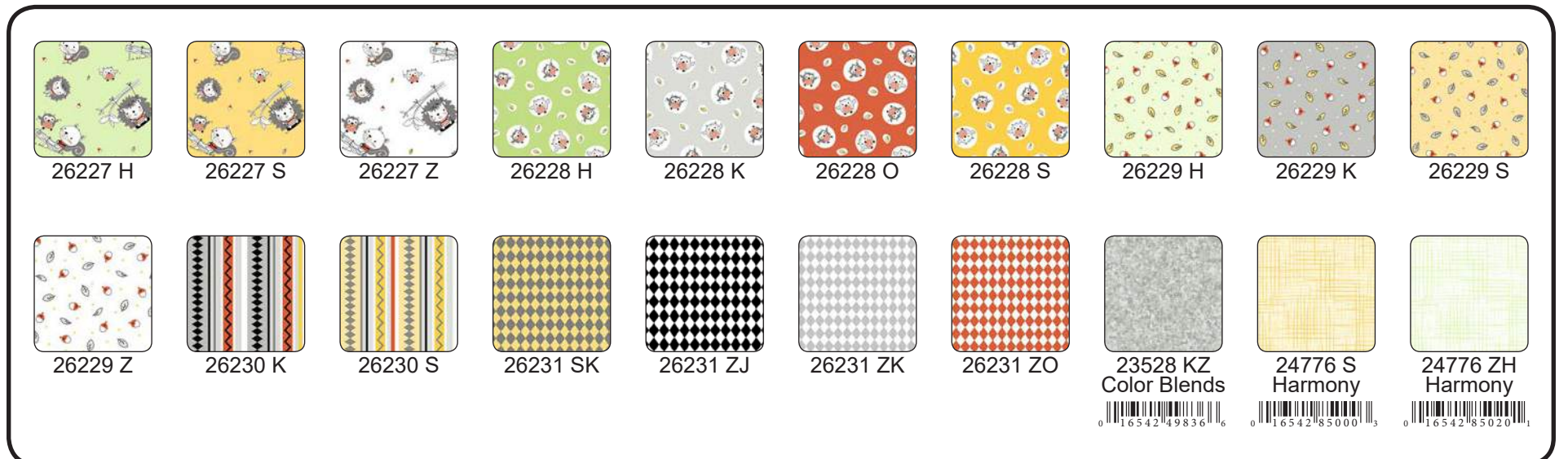


**Pattern Name: Skyscrapers**  
**Pattern Number: CQD01151**  
**Retail Price: \$9.00**

Custom pattern covers are not available.

KIT CALCULATIONS		
Skyscrapers	YARDS	12 KITS
<b>50" x 76"</b>		<b>BOLTS</b>
UPC is for fabric only, Does not include pattern P3583 ALL 		
26227 H	1 FQ	1
26227 S	1 FQ	1
26227 Z	1 FQ	1
26228 H	1 FQ	1
26228 K	1 FQ	1
26228 O	1 FQ	1
26228 S	1 FQ	1
26229 H	1 FQ	1
26229 K	1 FQ	1
26229 S	1 FQ	1
26229 Z	1 FQ	1
26230 K	1 FQ	1
26230 S	1 FQ	1
26231 SK	1 FQ	1
26231 ZJ	1 FQ	1
26231 ZK	1 FQ	1
26231 ZO	1 FQ	1
*23528 KZ (Color Blends)	1 FQ	1
*24776 S (Harmony)	1 FQ	1
*24776 ZH (Harmony)	1 FQ	1
*Color Blends and Harmony based on 12-yard bolts ** Binding requires 5/8 yard and backing requires 4 3/4 yards. These are not shown and should be added, if desired.		

Designed by: Cozy Quilt Designs  
Approximate Size: 50" x 76"





Designed by Cozy Quilt Designs  
50" x 76"



Wholesale and retail patterns available at:  
The Whimsical Workshop  
835 W. Warner Rd. 101-494 • Gilbert, AZ 85233  
888-499-5715 • www.TheWhimsicalWorkshop.com



Approximate Quilt Size: 52" x 56"  
Designed by Heidi Pridemore

**Wholesale Price: \$7.50**  
(3 pattern minimum)

**Pattern cover will reflect the image of this quilt.  
Pattern includes full size templates and  
placement drawings.**

*We do our best to make sure these are accurate  
yardages but these are estimates until the final pattern  
is completed and edited.*

KIT CALCULATIONS			
Bake Sale Quilt	YARDS	12 KITS	
52" x 56"		BOLTS	
UPC is for fabric only, Does not include pattern	P3602 ALL 		
26331 E	2 1/8	2	
26328 P	1/2	1	
26332 J	1/3	1	
26331 Q	1/3	1	
26331 P (also binding)	1 1/4	1	
26332 R	1/4	1	
26332 Q	1/4	1	
26329 J	5/8	1	
26329 E (backing only)	3 1/2	3	



Approximate Quilt Size: 52" x 56"  
Designed by Heidi Pridemore





Approximate Quilt Size: 44" x 52"  
Designed by: Heidi Pridemore

KIT CALCULATIONS		
Magical		12 KITS
Size: 44" x 52" SKU: P3599 ALL	YARDS	BOLTS
26243 B (1 panel)	2/3	1
23528 LE	1/3	1
23528 K*(includes binding)	7/8	1
23528 BE*	1/4	1
23528 N*	3/8	1
26244 B (backing)	3	3
*Color Blends based on 12 Yard Bolts		
Number of bolts is based on continuous cuts		
Note: Backing yardage is based on using one width of fabric. Increase yardage if you prefer a larger backing for your quilt.		



26243 B



23528 LE  
Color Blends



23528 K  
also binding



23528BE  
Color Blends



23528 N  
Color Blends



26244 B  
backing only

**Note: Yardage amounts shown are calculated based on standard editorial guidelines and feature commonly used cuts. Please refer to the cutting information for the exact size of each piece. You will want to base your kit fee on the piece cuts rather than the full yardage amount. As always, we recommend that you make a shop sample prior to creating any kit.**

**Please note that these yardage amounts are the designer's estimates only. Some changes may occur when the project instructions are written.**



Queen Size: 80" x 85"

Designed by: Wendy Sheppard

Throw Size: 58" x 70"



KIT CALCULATIONS					
Brooke Quilt		Throw		Queen	
Throw Size: 58" x 70"	P3591 ALL 	YARDS	12 KITS	YARDS	12 KITS
Queen Size: 80" x 85"	P35911 ALL 		BOLTS		BOLTS
UPC is for fabric only, Does not include pattern					
26317 X		1¼	1	1⅞	2
26319 J		⅜	1	½	1
26319 ZO		⅝	1	⅞	1
26320 JH		¼	1	½	1
26320 JP		¼	1	⅜	1
26320 ZJ		¼	1	⅝	1
* 26321 JX (also binding)		1	1	1¼	1
26322 O		½	1	⅝	1
** 22083 Z		2⅞	3	3¼	4
26318 Z (backing only)		4⅜	4	5	4
* Includes binding for both sizes					
** Illusions based on 12-yard bolts					

*Note: Yardage amounts shown are calculated based on standard editorial guidelines and feature commonly used cuts. Please refer to the cutting information for the exact size of each piece. You will want to base your kit fee on the piece cuts rather than the full yardage amount. As always, we recommend that you make a shop sample prior to creating any kit.*

*Please note that these yardage amounts are the designer's estimates only. Some changes may occur when the project instructions are written.*

**See reverse side**

# Brooke




Queen Size: 80" x 85"

Throw Size: 58" x 70"

Designed by: Wendy Sheppard



Designed by: Janet Wecker-Frisch  
Approximate Quilt Size: 34 1/2" x 54 1/2"

KIT CALCULATIONS		
Hatters Tea Party Quilt		12 KITS
Size: 34 1/2" x 54 1/2" SKU: P3558 ALL	YARDS	BOLTS
		
26145 X (1-24" panel)	2/3	1
26150 K	1 3/4	2
26151 J (binding)	1/2	1
26155 J	1/2	1
26147 E (backing)	1 3/4	2
<b>Note:</b> Backing yardage is based on using one width of fabric. Increase yardage if you prefer a larger backing for your quilt.		



26145 X



26150 K



26151 J  
binding



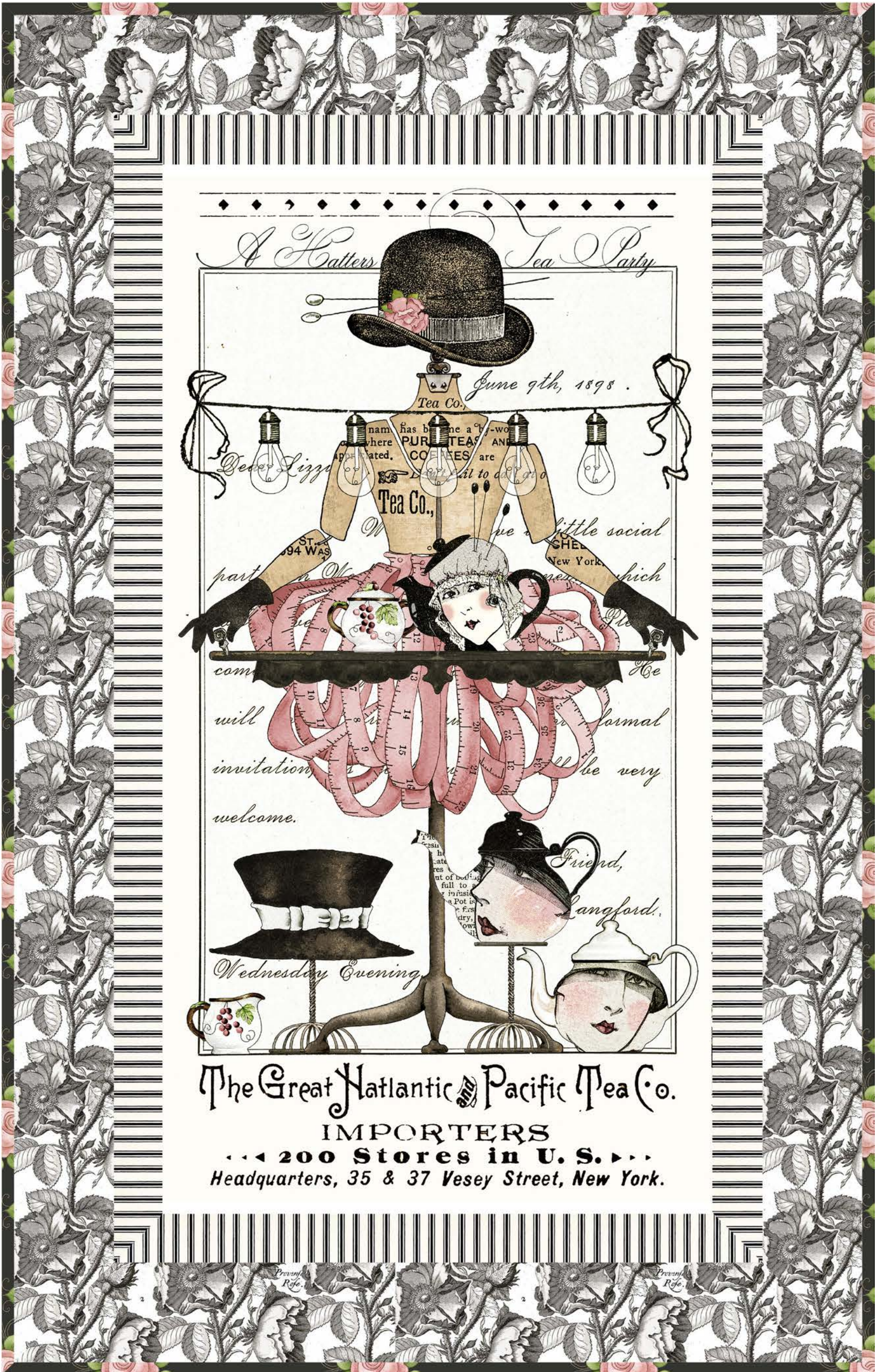
26155 J



26147 E  
backing

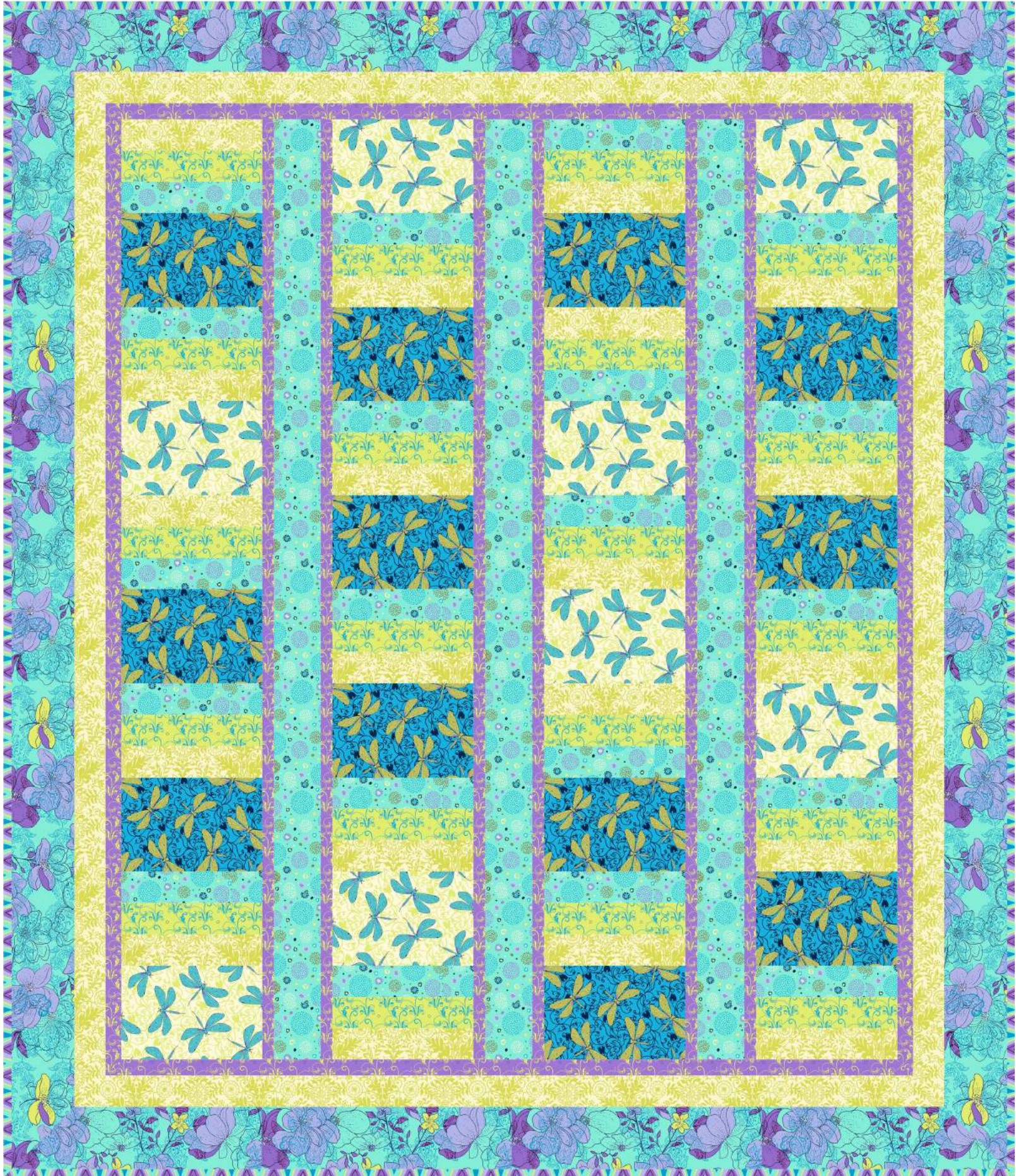
**Note:** Yardage amounts shown are calculated based on standard editorial guidelines and feature commonly used cuts. Please refer to the cutting information for the exact size of each piece. You will want to base your kit fee on the piece cuts rather than the full yardage amount. As always, we recommend that you make a shop sample prior to creating any kit.

Please note that these yardage amounts are the designer's estimates only. Some changes may occur when the project instructions are written.




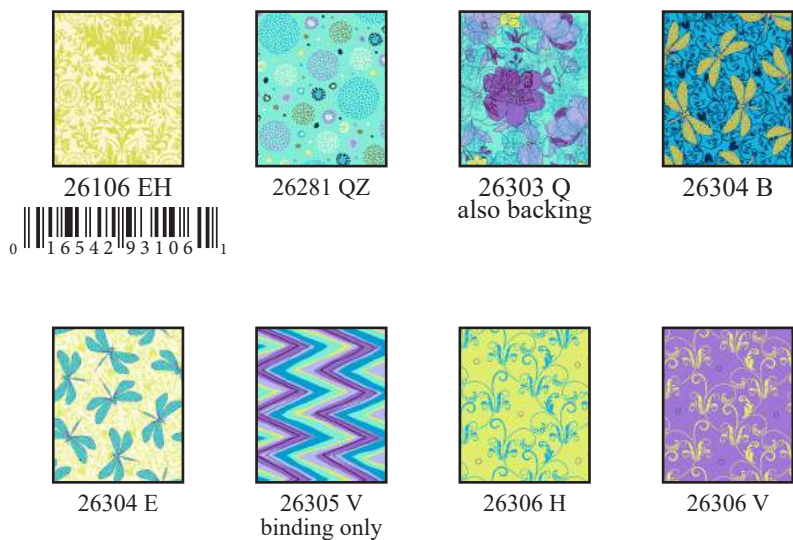
Designed by: Janet Wecker-Frisch  
Approximate Quilt Size: 34 1/2" x 54 1/2"

# Hayden



Approximate Quilt Size: 64 1/2" x 75"  
Designed by: Cyndi Hershey

KIT CALCULATIONS		
Hayden Quilt		12 KITS
Size: 64 1/2" x 75" SKU: P3597 ALL 	YARDS	BOLTS
26106 EH	1	1
26281 QZ	1	1
26303 Q	1 1/8	1
26304 B	2/3	1
26304 E	1/2	1
26305 V (binding only)	2/3	1
26306 H	1/2	1
26306 V	3/8	1
26303 Q (backing)	4 3/4	4
<i>Number of bolts is based on continuous cuts</i>		

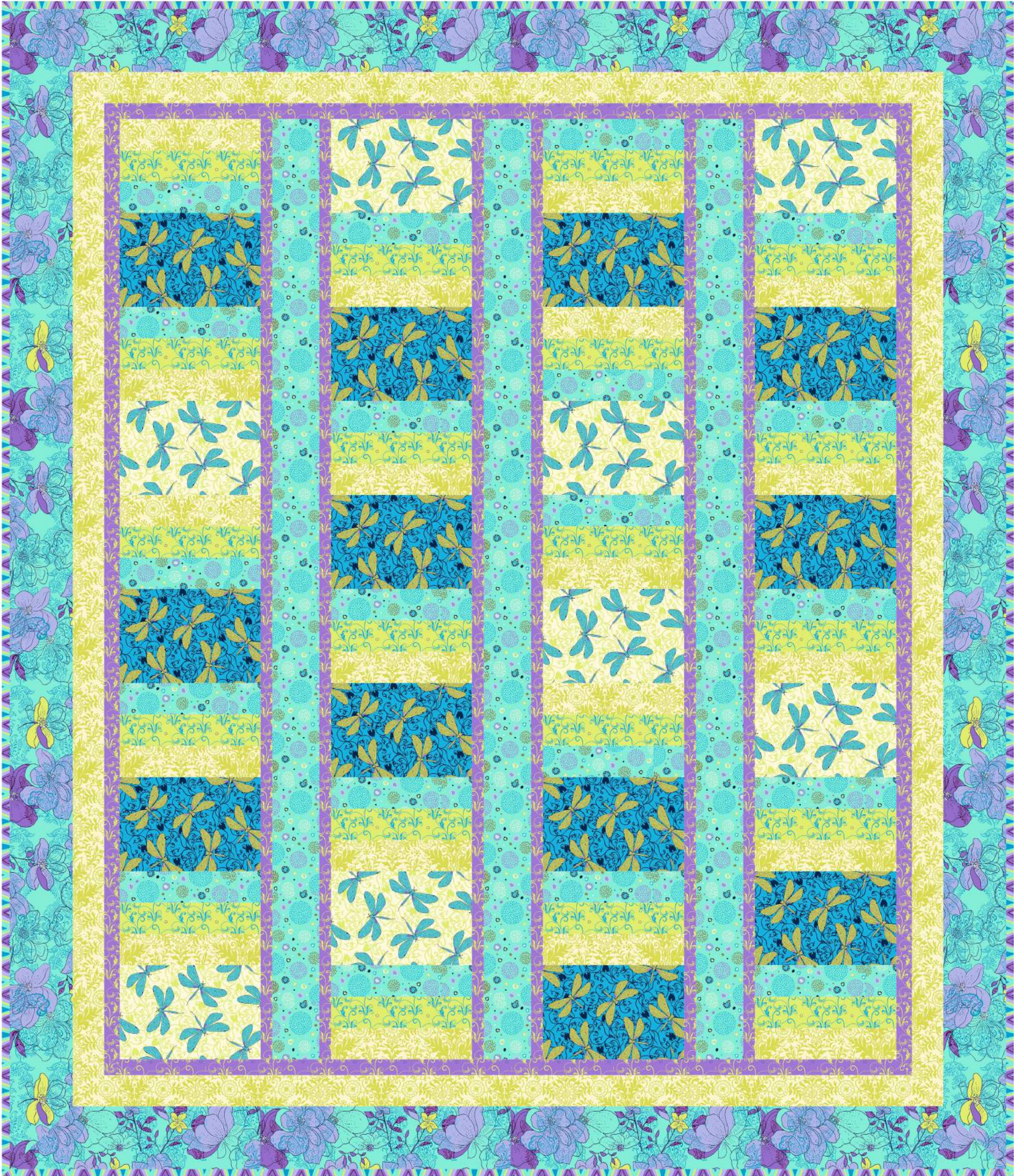


*Note: Yardage amounts shown are calculated based on standard editorial guidelines and feature commonly used cuts. Please refer to the cutting information for the exact size of each piece. You will want to base your kit fee on the piece cuts rather than the full yardage amount. As always, we recommend that you make a shop sample prior to creating any kit.*

**Please note that these yardage amounts are the designer's estimates only. Some changes may occur when the project instructions are written.**

**See reverse side**

# Hayden



Approximate Quilt Size: 64 ½" x 75"  
Designed by: Cyndi Hershey

# Hayden

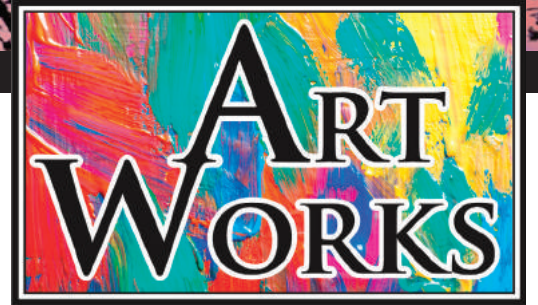


Project from Indygo Junction: IJ941 Ruffle Trio Wristlet

Images are for inspiration only unless otherwise noted. Similar projects can be found online.

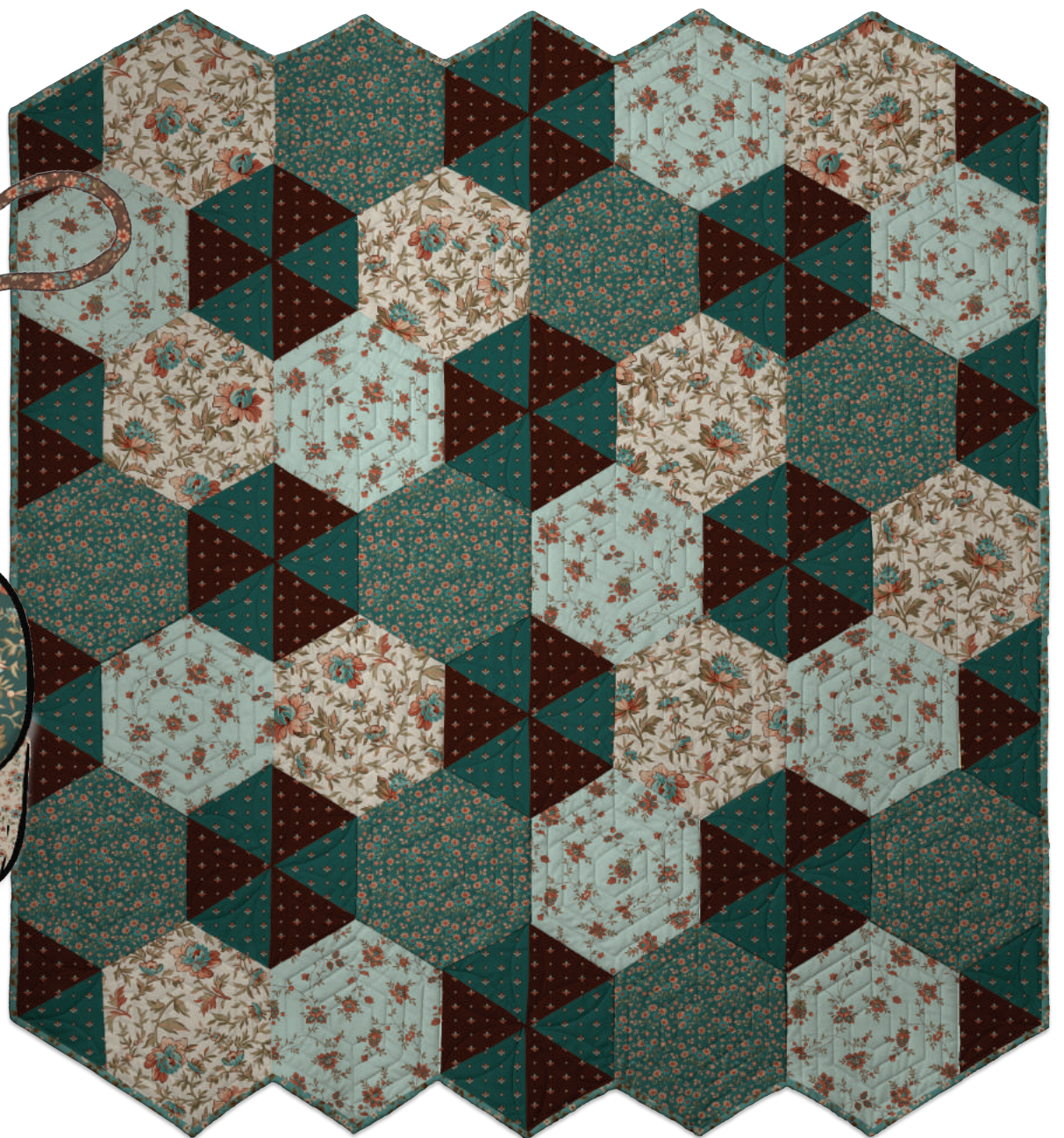


# ARTWORKS



# Bethel

antiquities



Project from Jaybird Quilts: Delight



Dan  
Morris



# Party Animals



TURNOWSKY  
S I N C E 1 9 4 0

