



fabrics

IMAGINE & CREATE



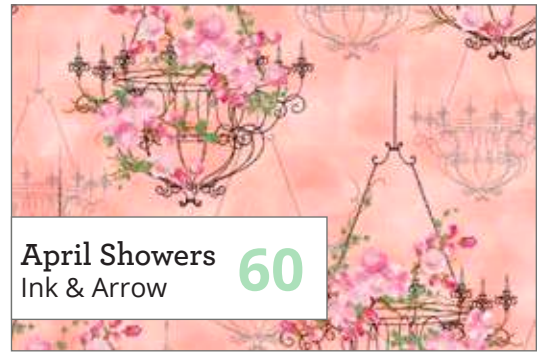
Winter 2018



Along the Countryside **18**  
Emily Skinner



Alpaca Picnic **8**  
Studio 8



April Showers **60**  
Ink & Arrow



Artworks VIII **74**  
QT Fabrics



Autumn Shimmer **20**  
QT Fabrics



Boos & Ghouls **62**  
Alicia Jacobs Dujets  
for Ink & Arrow



Christmas Eve **22**  
Liz Dillon



Dino-mite **10**  
Studio 8



Frequency **64**  
Judy Gauthier  
for Ink & Arrow



Harlow **14**  
Antiquities



Holiday Minis **24**  
Turnowsky



Jacqueline **12**  
Studio 8



Labrador-able **26**  
Jerry Gadamus

# TABLE OF CONTENTS



Mary's Journey  
Mary Englebreit **28**



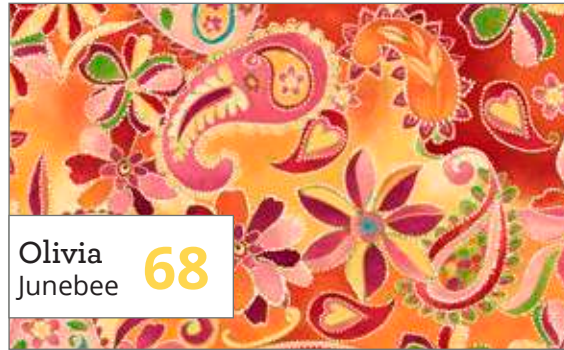
Melon Drop  
Santoro **30**



Mermaid Merriment  
Mary Englebreit **32**



Miracle in Bethlehem  
Liz Dillon **34**



Olivia  
Junebee **68**



Ombre Stitches  
QT Fabrics **36**



Peace·Love·Joy  
Peanuts **38**



Penelope  
Junebee **70**



Purr-suasion  
Dan Morris **40**



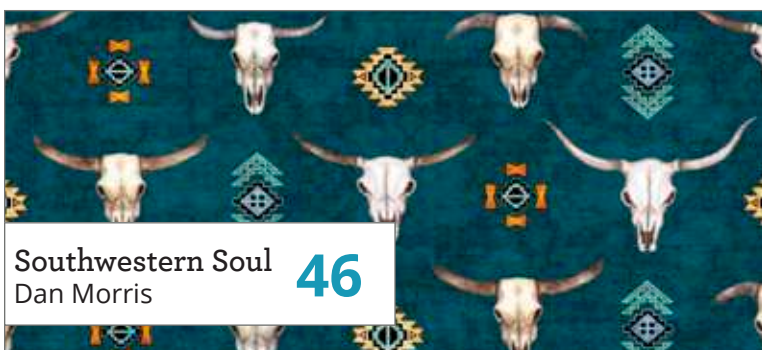
Round 'Em Up  
Cynthia Fisher/Michelle Grant **42**



Seamless  
Dan Morris **44**



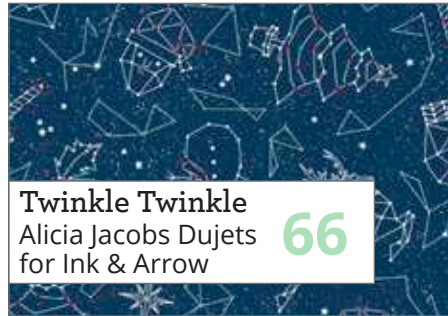
Sew & Go IV  
QT Fabrics **76**



Southwestern Soul  
Dan Morris **46**



Spellbound  
Dan Morris **48**



Projects **78-81**

USA Regional Sales Managers **82**

International Distributors **83**



**Our Customer Service Department is available**  
**Monday - Friday: 8:30 AM - 5:00 PM EST**  
**Tel: 800-876-2756**  
**Fax: 800-540-7063 • 401-275-9328**

**QTfabrics.com · inkandarrowfabrics.com**

View collections online and browse tools that support you, the shop owner. Shop when YOU want!

**Log on now to request an account**

**Liz Goodrick-Dillon**



**Christmas Eve, Miracle in Bethlehem**  
Pages 22, 34

Self-taught artist Elizabeth Goodrick-Dillon sold her first piece at 14 and became an established artist by 16. She has worked full-time in the arts for the past twenty-five years. Growing up with artistic parents, grandparents, and siblings made it pretty clear what she was going to do with her life. She says, "I have to create art daily."

**Alicia Jacobs Dujets**



**Boos & Ghouls Twinkle Twinkle**  
Pages 62, 66

Alicia Jacobs Dujets is an illustrator and designer based out of northern New Jersey. She earned her MFA in Illustration as Visual Essay at the School of Visual Arts and her BFA at the Maryland Institute College of Art. She is honored to have work included in American Illustration, TED Books, and SMITH Magazine.

**Rebecca Latham**



**Splendid Swans**  
Page 50

Growing up in a family drawn to the outdoors, Rebecca has always experienced a closeness to the natural world. With the supportive encouragement of her parents, and finding a talent in art, she chose to focus her future as a painter in her mid-teens.

**Dan Morris**



**Purr-suasion, Seamless, Spellbound, Southwestern Soul**  
Pages 40, 44, 46, 48

Since 1994 Dan Morris has been creating innovative, original art for a broad array of industries. From T-shirts for the Grateful Dead, 1960's inspired peace stickers, and celestial calendars, to more traditional home and gift markets, Dan has a wide range of eclectic artwork spanning almost every artistic theme.

Our QT Fabrics team extends beyond our employee-owners. We work with creative and dedicated artists to expand our in-house studio talent. We are committed to providing an array of collections suited to many different styles. Collaboration is the QT Fabrics way!

**Mary Englebreit**



**Mary's Journey  
Mermaid Merriment  
Pages 28, 32**

Mary Engelbreit is one of America's best known and beloved artists/illustrators/designers. Nearly 35 years ago, Mary launched her own greeting card company with a line of just 12 cards. Today, Mary is the head of a highly successful business bearing her name, and is considered the country's premier designer and artist of lifestyle products. Mary was born and raised in St. Louis, Missouri, where she currently lives with her family.

**Cynthia Fisher**



**Round 'Em Up  
Page 42**

Cynthia Fisher of Hamilton, Montana, is a self-taught wildlife artist, working mostly in acrylics. She has been painting full-time for almost thirty years, concentrating mainly on depicting unique animal behaviors and interactions, learned from a lifetime of studying and observing wildlife.

**Judy Gauthier**



**Frequency  
Page 64**

Judy Gauthier is a wife, mother, quilt shop owner, and seamstress. She is the owner of Bungalow Quilting & Yarn, with locations in Ripon and Milwaukee, Wisconsin. Judy started sewing at a very young age. She says that's true of most accomplished sewists who, like her, owe their success to devoted 4-H leaders, mothers, and grandmothers.

**Jerry Gadamus**



**Labrador-Able  
Page 26**

Jerry Gadamus is a renowned outdoor painter. His technique of "freehand airbrushing", done without the aide of stencils or paintbrush, gives his work the spectacularly detailed look he is known for. Two of Jerry's paintings hang in the Leigh Yawkey Woodson Art Museum in Wausau, Wisconsin.

**Michelle Grant**



**Round 'Em Up  
Page 42**

Native Calgarian, Michelle Grant has been the recipient of numerous international awards for her work. A diverse artist, Michelle has worked with the Royal Canadian Mint since 2002 designing numerous gold, silver and circulation coins. In addition, she has participated in creating the Mural Mosaic for the 2010 Winter Olympic Games in Vancouver.

**Emily Skinner**



**Along the Countryside  
Page 18**

Emily studied animation at The Royal College of Art and worked in the animation industry on short films and commercials before focusing more on her illustration work after the birth of her first child. She now lives in London and works as a freelance illustrator and artist.

**Studio 8**



**Alpaca Picnic,  
Jacqueline  
Pages 8, 10, 12**

Studio 8 lines are created in-house by our talented design team in New York. Led by Design Director Janet Andersen, our studio develops fabric prints reflecting the latest trends in color and design.

Rosanne Abbenda, Alicia Jacobs Dujets, Cindy Sepp, and Monica Zhu work together to bring fabrics styled for dynamic projects with a modern flair.

**Sarah Summers**



**Three Wise Men,  
Woodland Dream  
Pages 52, 56**

Sarah was born and raised in Berkeley, a small historical market town on the edge of the beautiful Cotswold Hills, situated in the west of England. After attending art college for 4 years, she went on to work as a junior graphic designer for several design agencies in and around Bristol. Sarah now works full time as a freelance illustrator from her studio in rural Gloucestershire.

**Denise Urban**



**Windmill Whimsy  
Page 54**

Denise Urban is formally educated in art history, graphic design and fashion illustration as well as merchandising. Happily sketching, illustrating, and designing, Denise was consistently pursued, and solicited for her business acumen and keen trend predictions-by those who had originally hired her based on sheer artistic skill.

**Lynnea Washburn**



**Autumn Shimmer  
Page 20**

Lynnea has worked in the art licensing industry since 1989 in a variety of roles including Art Director, Writer and Artist. Lynnea has worked in a variety of mediums, but enjoys the mercurial nature of watercolor above all. Lynnea's work can be found on products for home decor, gifts and stationery, and is carried by an array of independent gift retailers and mid-tier chain stores.

# EMPLOYEE OWNERS

## PRESIDENT



Ken Gamache

## CUSTOMER SERVICE



Donna Silva



Luis Torres



Debra Voelker

## DESIGN STUDIO



Janet Andersen



Rosanne Abbenda



Alicia Jacobs Dujets



Cindy Sepp



Monika Zhu

## SUPPLY CHAIN



Thomas J. Kemble



John Ferreira



John Fraioli

## MARKETING



Tiffany Jawor-Smith



Autumn Laskowski



Brian Millar

## REGIONAL SALES MANAGERS



Jayne Clark



Debra Coffman



Kevin Driscoll



Mike Flynn



Ann Haley



Martha Manning-Jurey



David Markey



Sarah Maylath



Coby McComas



Jesus Montero



Kay Peterson



Tammie Randle



Barbara Wing

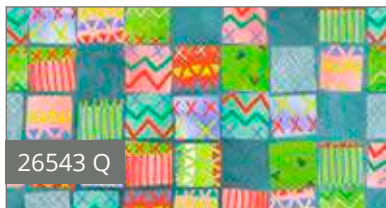
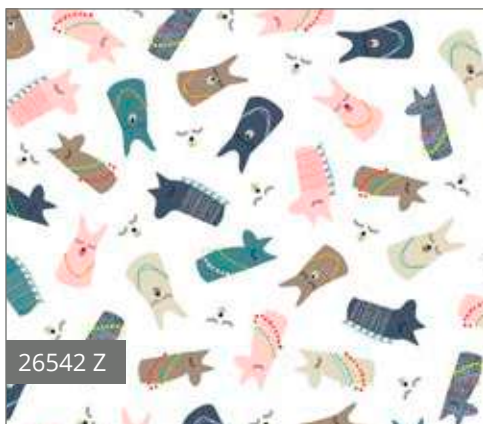
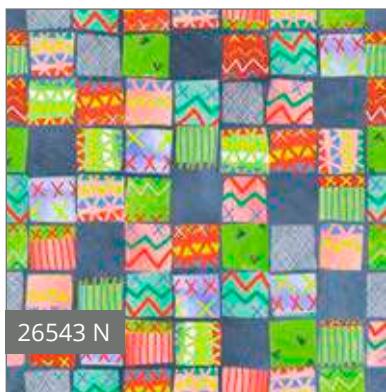


**STUDIO** 

# Alpaca Picnic

Packed with fun and trendy prints, Alpaca Picnic is heading to your sewing room! A bold main print of Alpacas and cactus motifs bring southwestern style. While the coordinate stripe and blanket print bring pops of color. With so many great options and your creativity, this collection will be the star of your next great project!

Orders in by January 15<sup>th</sup> will ship mid April



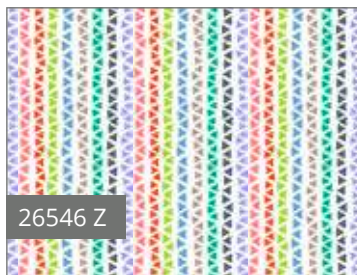
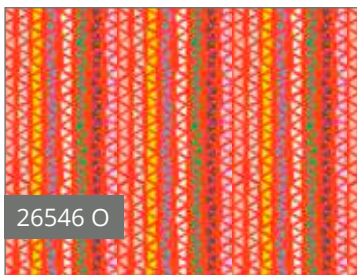
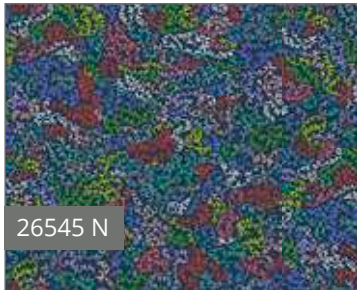
Pattern: Margo Handbag from Lazy Girl Designs



April Delivery  
6 Prints, 15 Color Combos



Lullaby Lane Quilt - Project For Sale from Sassafraz Lane Designs



Pattern: Candy Dish Pillow from Jaybird Quilts

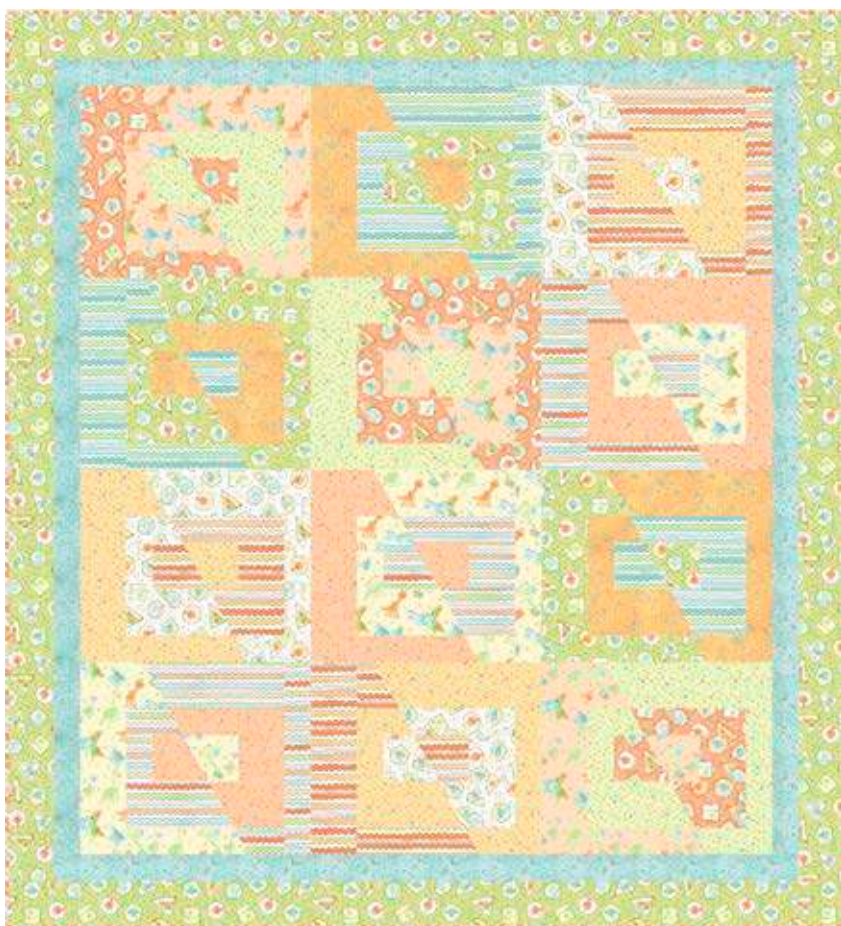
Studio 8



# Dino-mite

These friendly dinosaurs want to play! In gender-neutral colors, the options for baby nurseries are endless. Trendy colors mixed with sweet dino prints come together to bring you a perfectly Dino-Mite collection of fun fabrics.

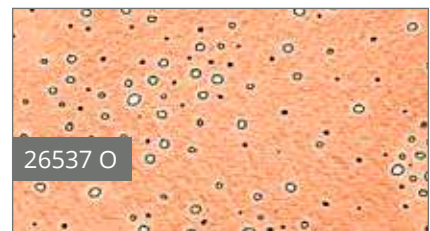
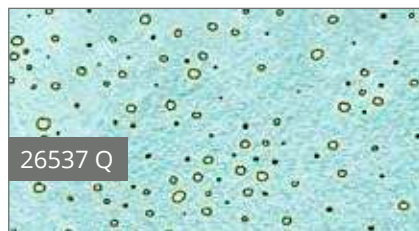
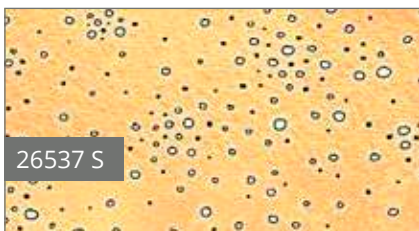
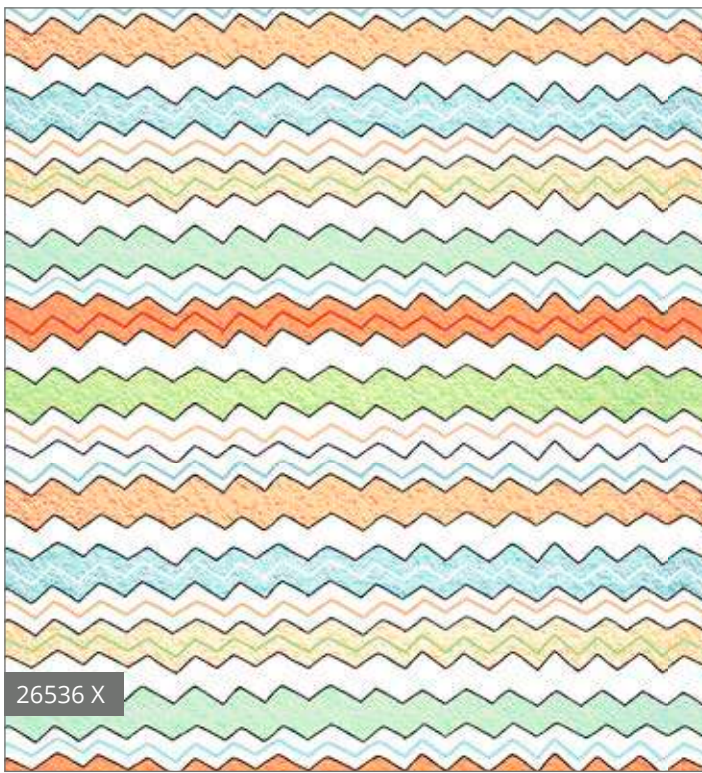
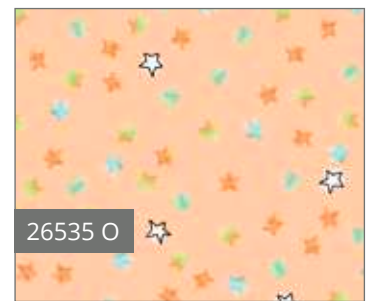
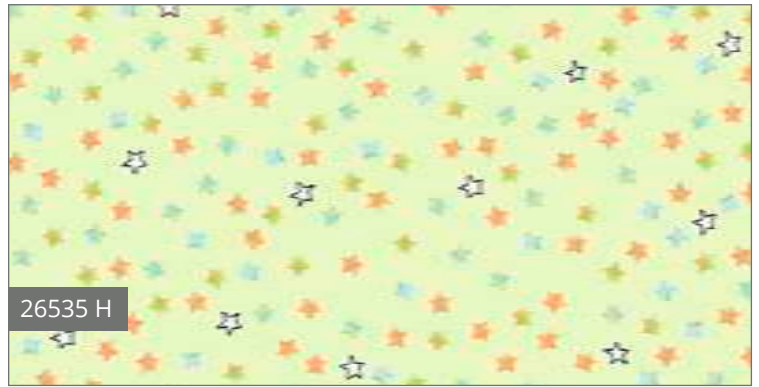
Orders in by January 1<sup>st</sup> will ship mid March



March Delivery  
5 Prints, 15 Color Combos



Pattern: Heather Hippo from Funky Friends Factory



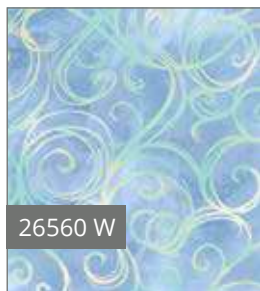
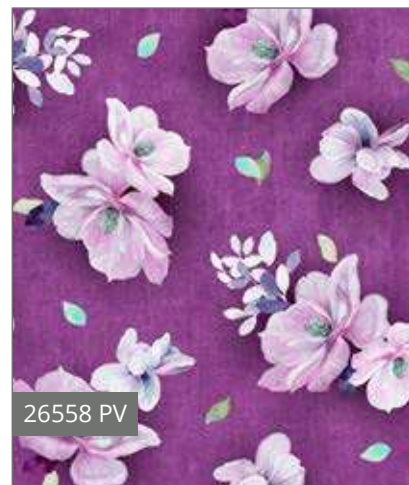
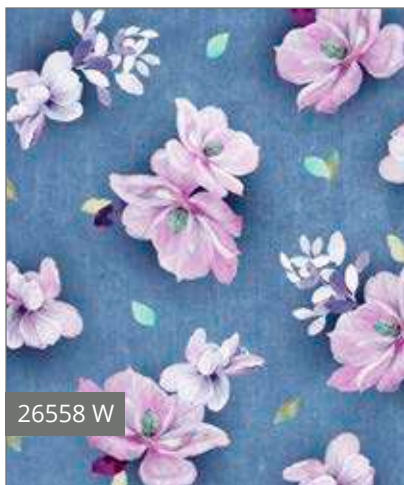
Studio 8



# Jacqueline

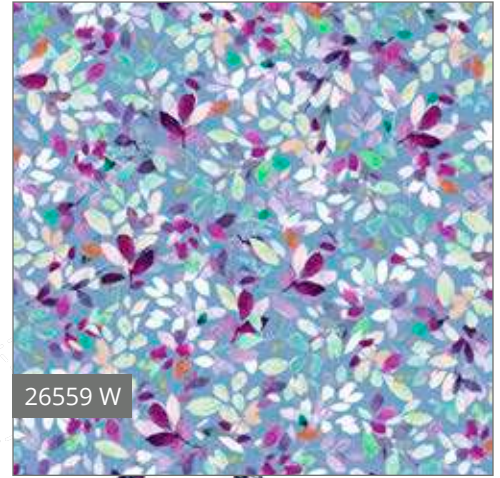
Stunning color and vivid details await in this fashionable and fresh collection of floral fantasy. Balanced with almost ice-like coordinates, the richness of the deep hues are complimented nicely with light and airy prints. Think of beautiful home décor and fashion accessory items awaiting this new Studio 8 collection.

Orders in by January 15<sup>th</sup> will ship mid April



April Delivery  
5 Prints, 14 Color Combos

Precuts  
available



Pattern: Spring Sling from Emmaline Bags

© Studio 8  
Designs shown at 25% scale

Jacqueline Bargello Star - Project For Sale from Pine Tree Country Quilts

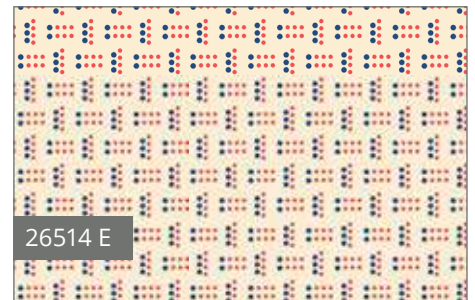
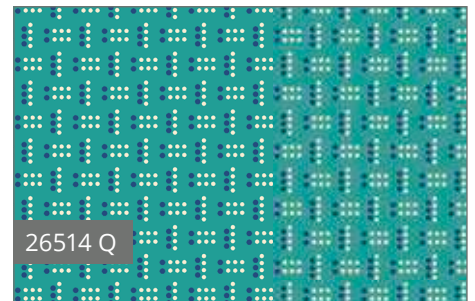
Studio 8



# HARLOW

With a nod to the look of the 1930's, these prints are colorful and bold. Great for so many applications, from cheery kitchens to fashionable accessories to fun home décor. Harlow delivers a modern twist on these vintage prints.

Orders in by February 15<sup>th</sup> will ship mid May



May Delivery  
5 Prints, 13 Color Combos

Precuts  
available

antiquities



Harlow Quilt - Project For Sale from Pine Tree Country Quilts



26512 C



26512 N



26512 Q



Pattern: Gazebo Table Topper from Jaybird Quilts



Pattern: Tray Chic (Hexi) from Lazy Girl Designs

Antiquities





fabrics

IMAGINE & CREATE



HARVARD CLASSICS THE FIVE FOOT SHELF OF BOOKS  
29  
VOYAGE OF THE BEAGLE  
DARWIN

HARVARD CLASSICS THE FIVE FOOT SHELF OF BOOKS  
33  
VOYAGES AND TRAVELS  
P.F. COLLIER & SON

HARVARD CLASSICS THE FIVE FOOT SHELF OF BOOKS  
AND CAL  
E VE





fabrics

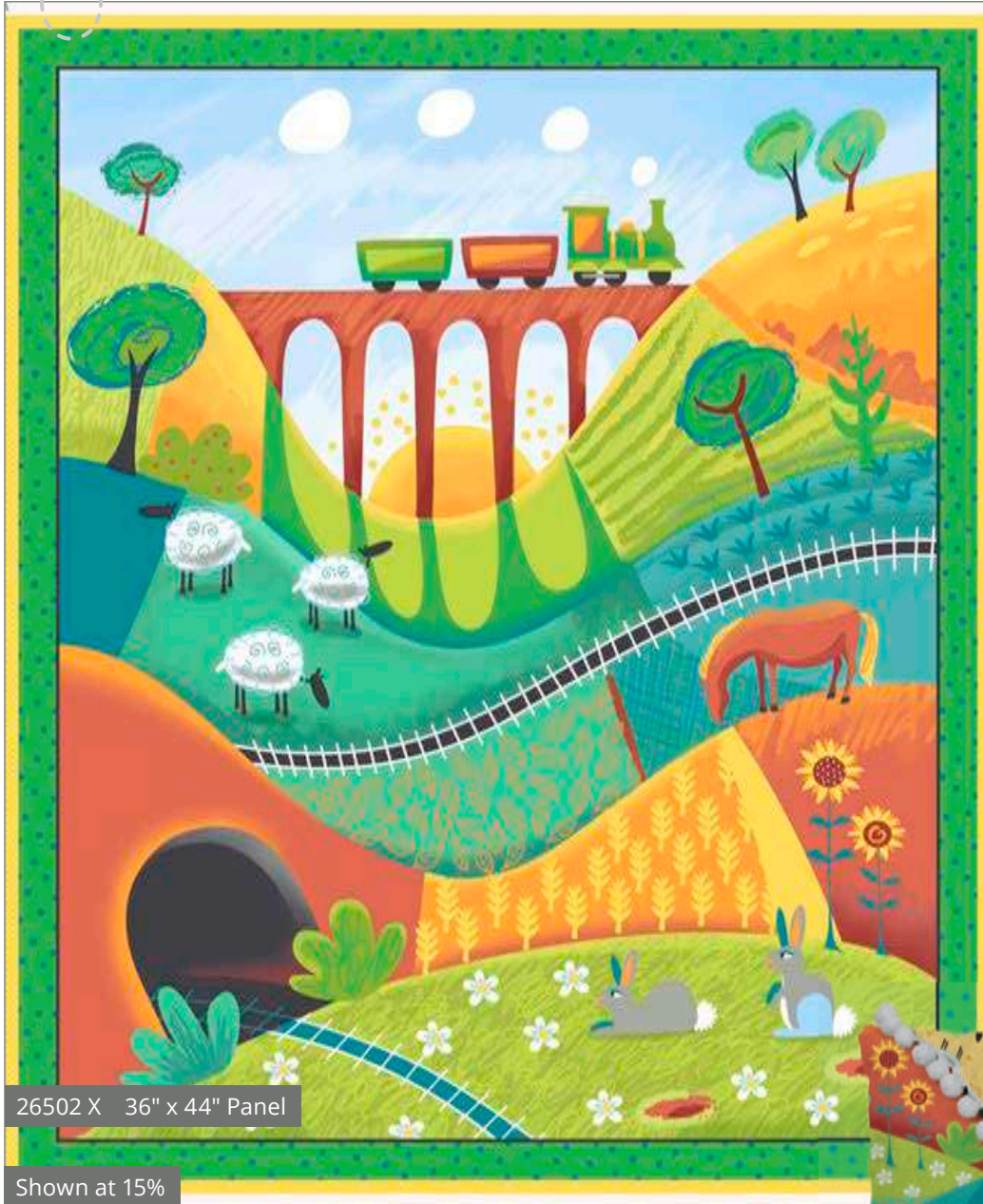
IMAGINE & CREATE



# ALONG the COUNTRYSIDE

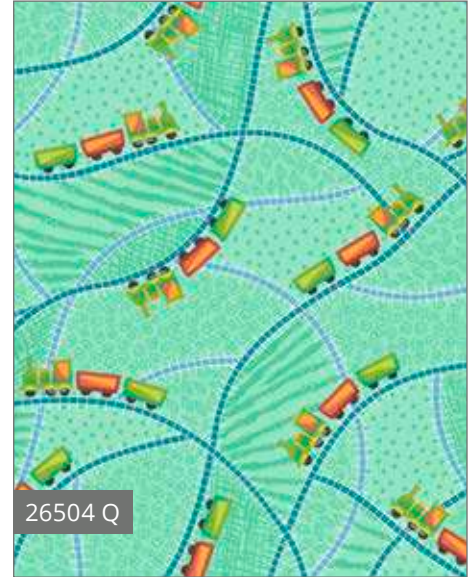
All aboard for a colorful fun adventure *Along the Countryside*. Emily Skinner offers her whimsical artwork for this cheerful collection of prints perfect for happy home décor. Decorative accents can be highlighted by embellishments to make a wonderful personalized project!

Orders in by January 1<sup>st</sup> will ship mid March



26502 X 36" x 44" Panel

Shown at 15%



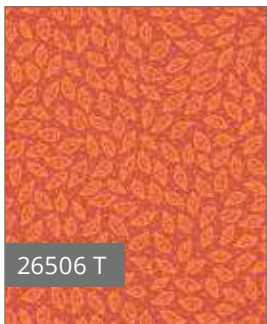
26504 Q



26504 O



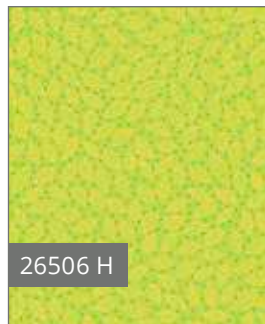
26504 H



26506 T



26506 Q



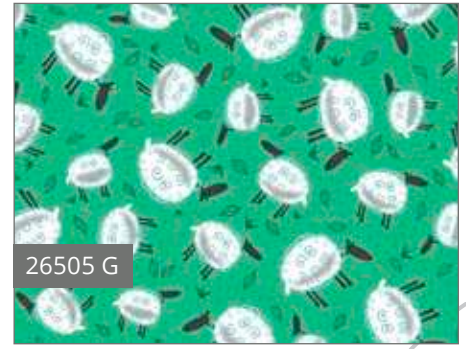
26506 H



Pattern: Envelope Pillow from QT Fabrics

March Delivery  
5 Prints, 12 Color Combos

EMILY SKINNER



Emily Skinner



# Autumn Shimmer

Sophisticated and elegant, beautiful white pumpkins delight with decorative accents of metallic gold from artist Lynnea Washburn. The main patch panel is perfect for placemats and coasters. Celebrate Thanksgiving with great home décor accents and showcase your creativity.

Orders in by January 1<sup>st</sup> will ship mid March

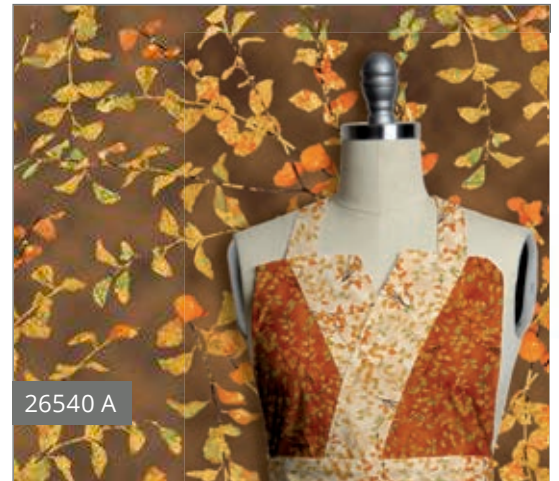


26538 E 24" x 44" Panel

Shown at 20%



26540 O



26540 A



26540 E

Pattern: Besty Apron from Indigo Junction

March Delivery  
3 Prints, 7 Color Combos

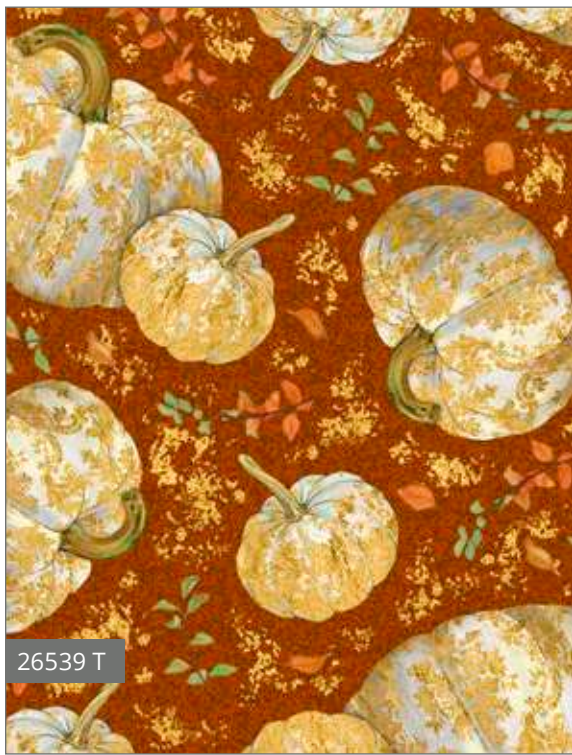
METALLIC  
ACCENTS!



26539 A



26539 E



26539 T



Autumn Shimmer Quilt - Project For Sale from Pine Tree Country Quilts



Pattern: Runaround Bag from  
Lazy Girl Designs

Lynnea Washburn



# Christmas Eve

Sparkling Santa and all the fun he brings is featured in Christmas Eve by Liz Dillon with metallic gold accents throughout. Two different panels with various fun coordinates allow for lots of festive celebratory projects. Fantastic snowflakes and Santa's toys are great when paired with the panels or on their own. Santa Claus will love seeing these great fabrics in your next project.

Orders in by February 15<sup>th</sup> will ship mid May



Shown at 12%

METALLIC ACCENTS!

May Delivery  
5 Prints, 11 Color Combos

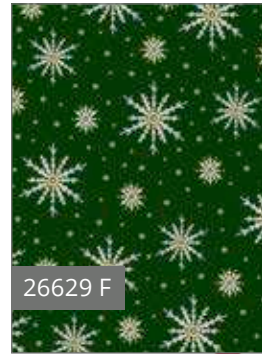
*Liz Goodrick-Dillon*  
LIZ GOODRICK-DILLON



Pattern: Stereo Quilt from Jaybird Quilts



26629 Z



26629 F



26629 N



For inspiration only



26628 N



26628 R



26628 G

© Liz Dillon Designs shown at 25% scale

Liz Goodrick-Dillon



# HOLIDAY MINIS

*They say great things come in small packages. Same thing for these wonderful mini prints. Tiny prints bursting with fun and festivity, this collection by Turnowsky brings lots of little prints together with color and metallic gold accents. There are so many possibilities with these mini prints packed with holiday spirit!*

Orders in by February 15<sup>th</sup> will ship mid May



26597 Y



26597 Z



26597 F



26598 G



26598 Z



26598 Y



26601 R



26601 Y



26601 F



Holiday Minis Quilt - Project For Sew Many Creations



May Delivery  
6 Prints, 18 Color Combos

TURNOWSKY  
SINCE 1940

METALLIC  
ACCENTS!



Pattern: Wonder Wallet from Lazy Girl Designs



26599 Z



26599 N



26599 F



26600 R



26600 Z



26600 N



26602 Z



26602 N



26602 F

# Labrador-Able

Sweet and adorable Labrador puppies are so irresistible. Their frolicking fun is captured by the artwork of Jerry Gadamus. With natural coordinates of barn board and leaf piles, these puppy fabrics have a lot of possibilities for fun projects.

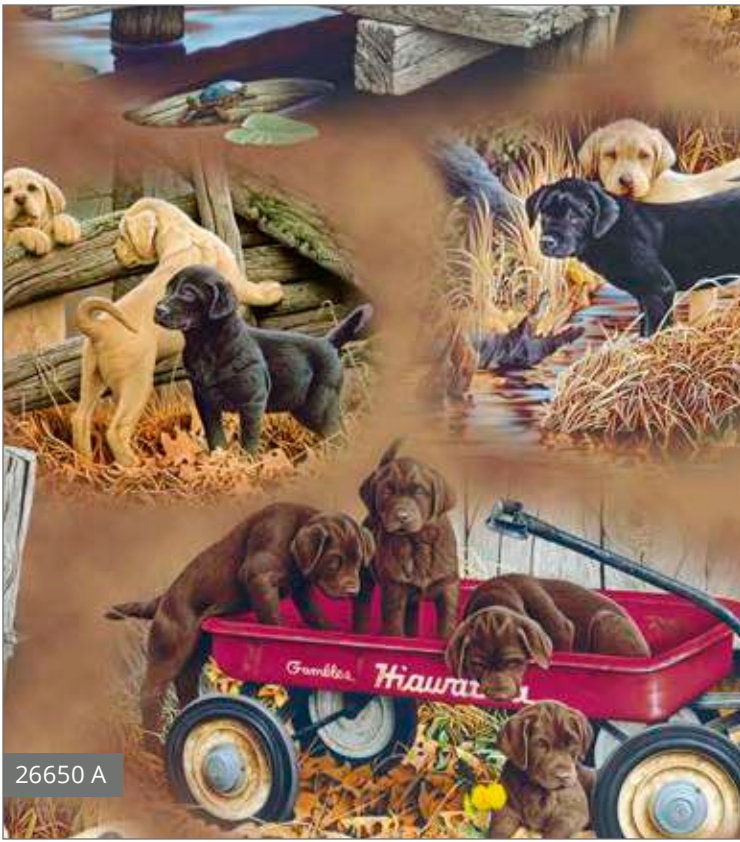
Orders in by February 15<sup>th</sup> will ship mid May



May Delivery  
5 Prints, 12 Color Combos



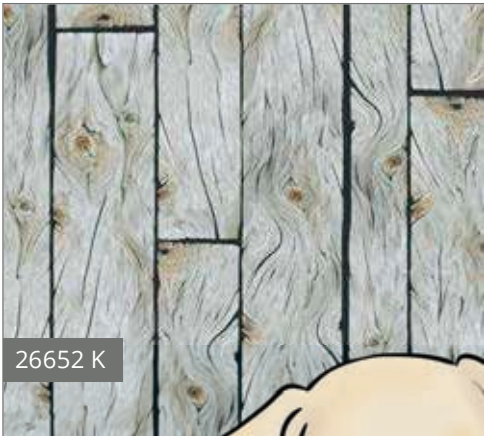
Jerry Gadamus



26650 A



26650 R



26652 K



26652 E



For inspiration only



26653 X



26653 S

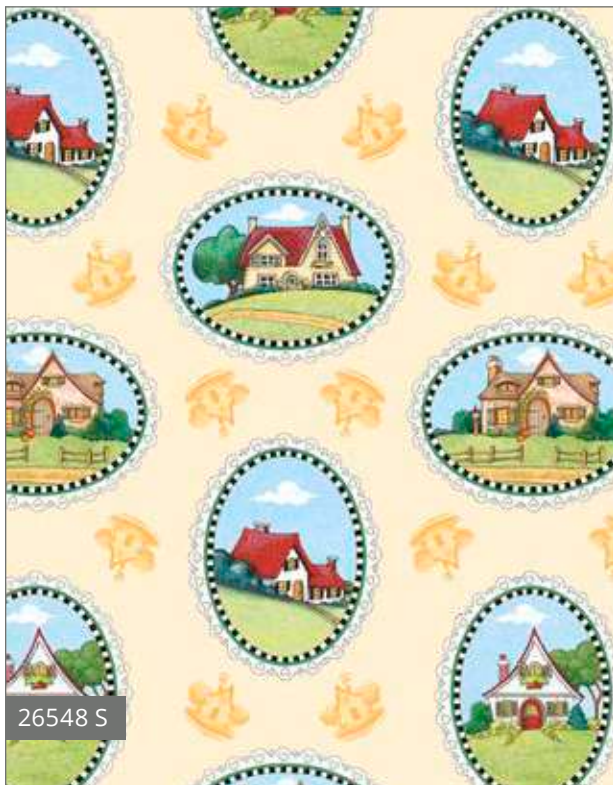


26653 E

# Mary's Journey

"Even a journey of 1000 miles starts with a single sketch." Mary has been creating artwork for over 41 years and this collection features her iconic Scotties, "fefs" (fried egg flowers), and where it (and most journeys) began... home.

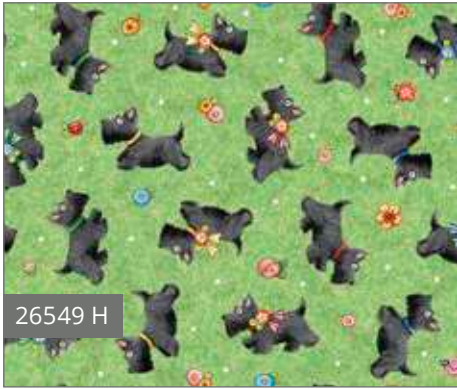
Orders in by January 15<sup>th</sup> will ship mid April



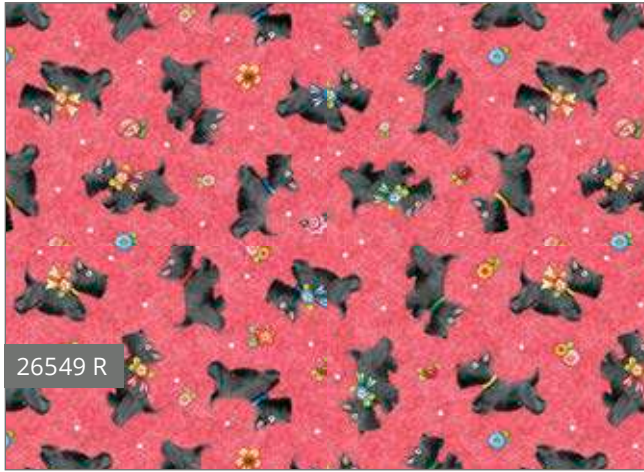
For inspiration only

April Delivery  
4 Prints, 10 Color Combos

Mary Engelbreit



26549 H



26549 R



26549 S



26550 R



26550 S



26550 X



26548 P



For inspiration only



26548 H

Mary Engelbreit



# Melon Drop

Fresh, fun and sweet, these Kori Kumi prints are here for your next project. Watermelon accents and pretty florals come together with the iconic girls in their playful scenes. A great collection for tween home décor and the young at heart.

Kori Kumi™  
COLLECTION

Orders in by January 15<sup>th</sup> will ship mid April



26515 X 24" x 44" Panel

Shown at 18%



26516 Z

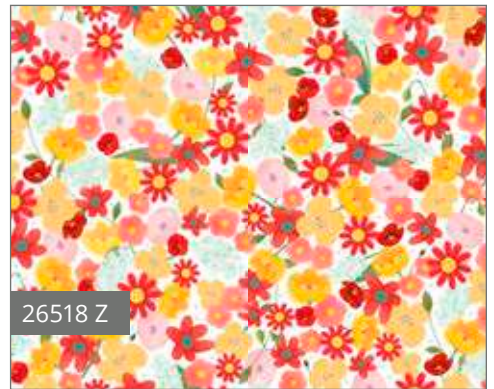
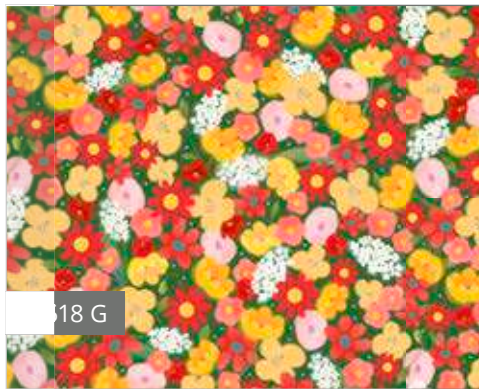


26516 Q

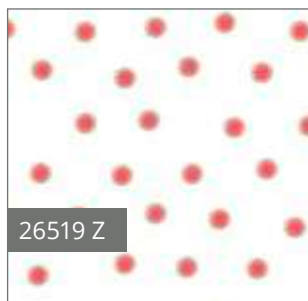


26516 H

April Delivery  
5 Prints, 13 Color Combos



For inspiration only



# Mermaid Merriment

These Mary mermaids are so fun and sweet. With her aquatic friends, this collection delivers a lot of merriment. Great for the young, or young at heart, these mermaid prints and coordinates are ready for your next project.

Orders in by January 1<sup>st</sup> will ship mid March



26520 B 36" x 44" Panel

Shown at 17%



26522 Q



26522 B



26523 B



26523 S

Pattern: Pop-Up 5.5" from Fat Quarter Gypsy

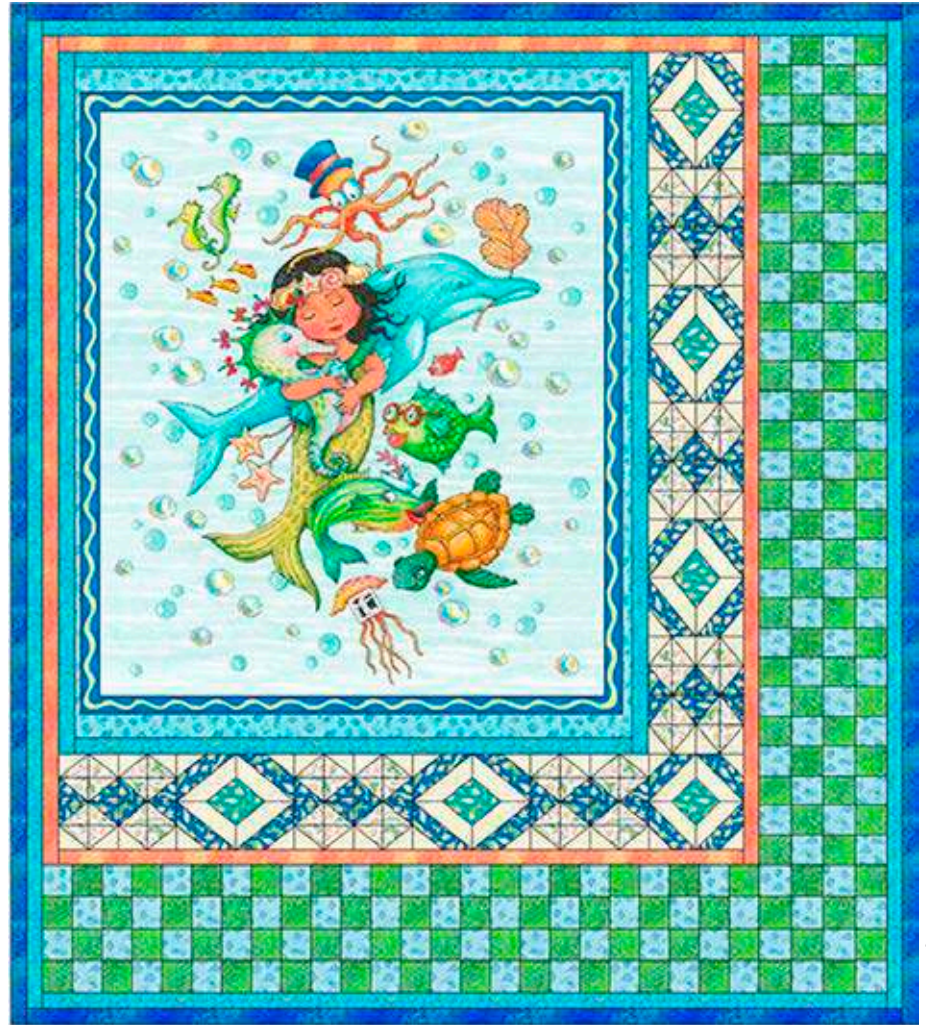


March Delivery  
4 Prints, 8 Color Combos

Mary Engelbreit



Pattern: Runaround Bag from Lazy Girl Designs



Spotlight Quilt - Project For Sale from The Stitch TV



26522 Z



26521 B



26521 BZ

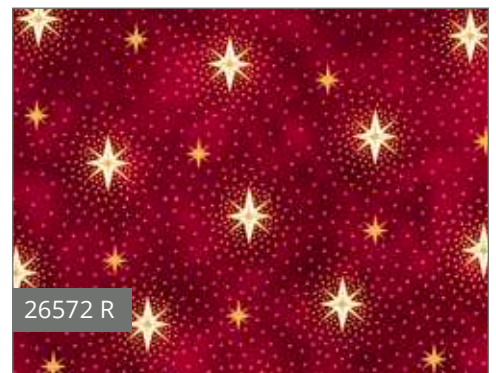
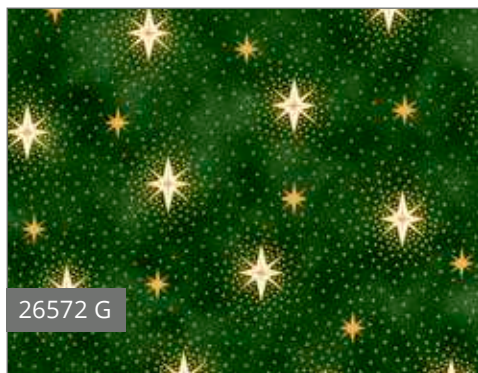
Mary Engelbreit



# Miracle in Bethlehem

The artwork of Liz Dillon brings an image of celebration with this beautifully depicted Nativity scene including the Magi. Metallic gold accents throughout add shimmer and sparkle to the detailed, almost illuminated artwork. With red, navy and hunter green coordinate prints, an elegant project awaits.

Orders in by February 15<sup>th</sup> will ship mid May



METALLIC ACCENTS!

May Delivery  
3 Prints, 7 Color Combos

*Liz Goodrick-Dillon*  
LIZ GOODRICK-DILLON



Miracle in Bethlehem Quilt - Project For Sale from Pine Tree Country Quilts



26571 R



26571 G



26571 N

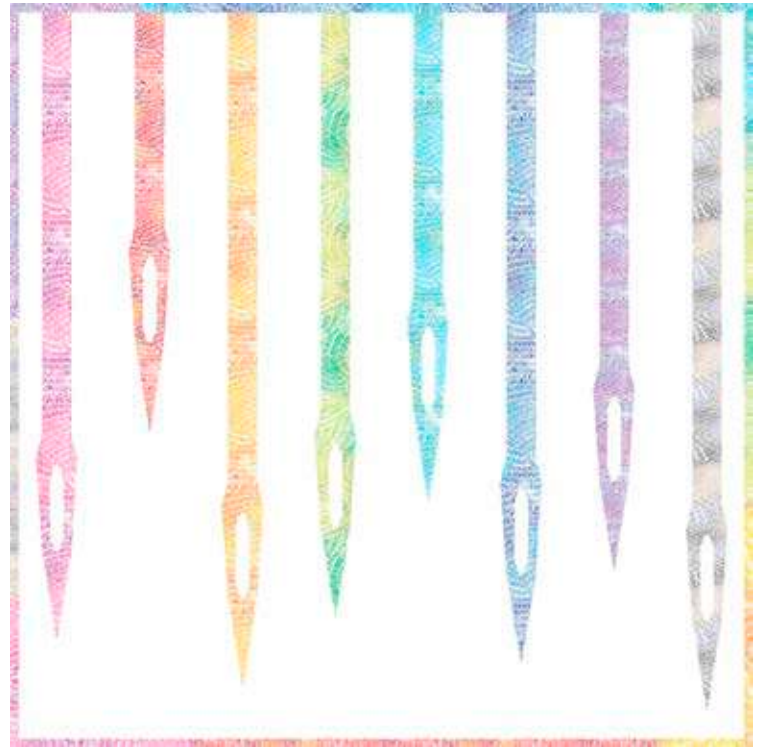
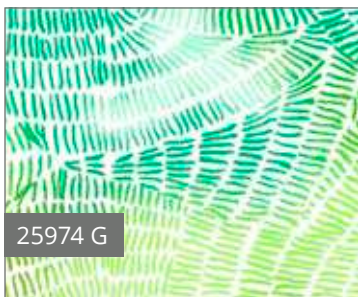
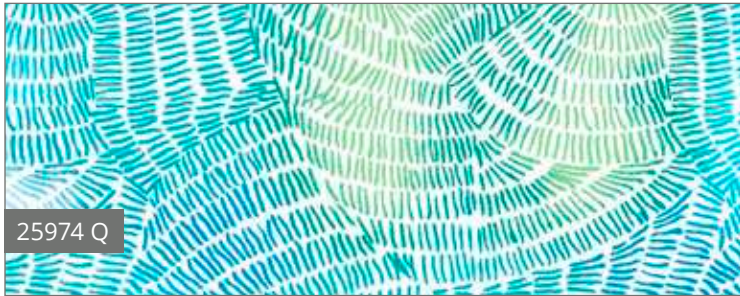
Liz Goodrick-Dillon



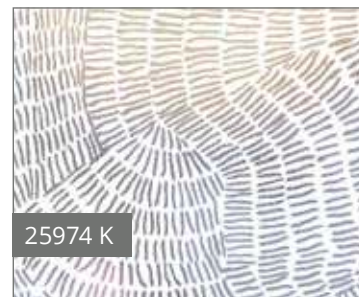
# Ombre Stitches

Meandering color and fantastic stitches combine in this great all-over print, Ombre Stitches. The textural effect of the stitches bring so much movement to this wonderful fabric. In 20 color stories, these fabrics are great stand-alone prints or can be paired with our Color Blends basics for extra pop!

Orders in by January 1<sup>st</sup> will ship mid March



Sew Speedy Mini Quilt - Project For Sale from Whole Circle Studio



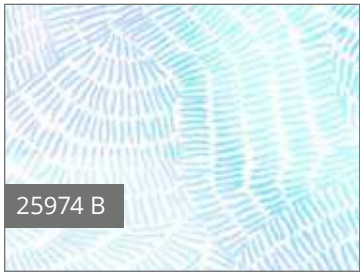
March Delivery  
1 Prints, 20 Color Combos

Precuts available



Ombre Stitches Collection from Aurifil

To order, please contact Dario dario@aurifilusa.com or contact your preferred distributor

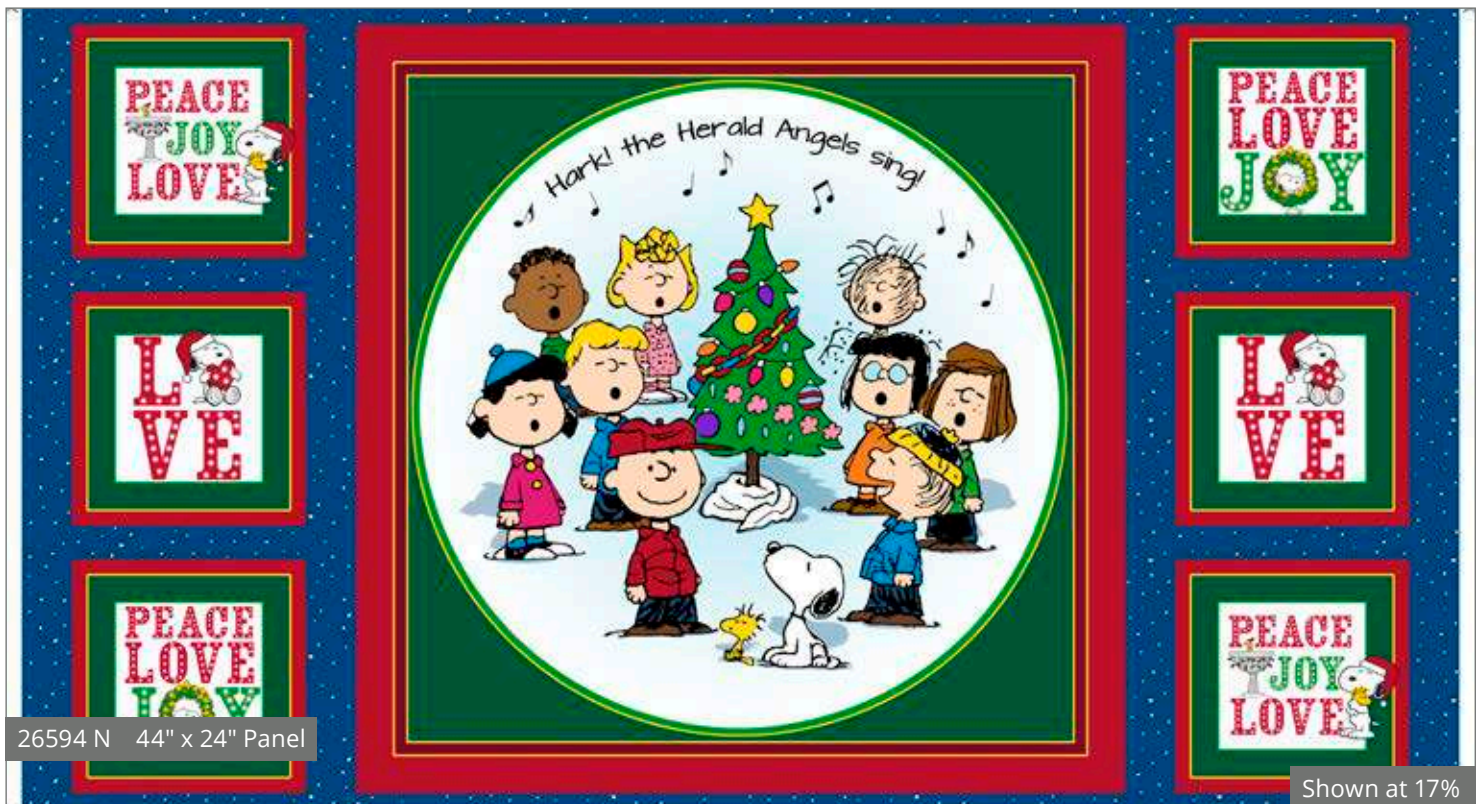
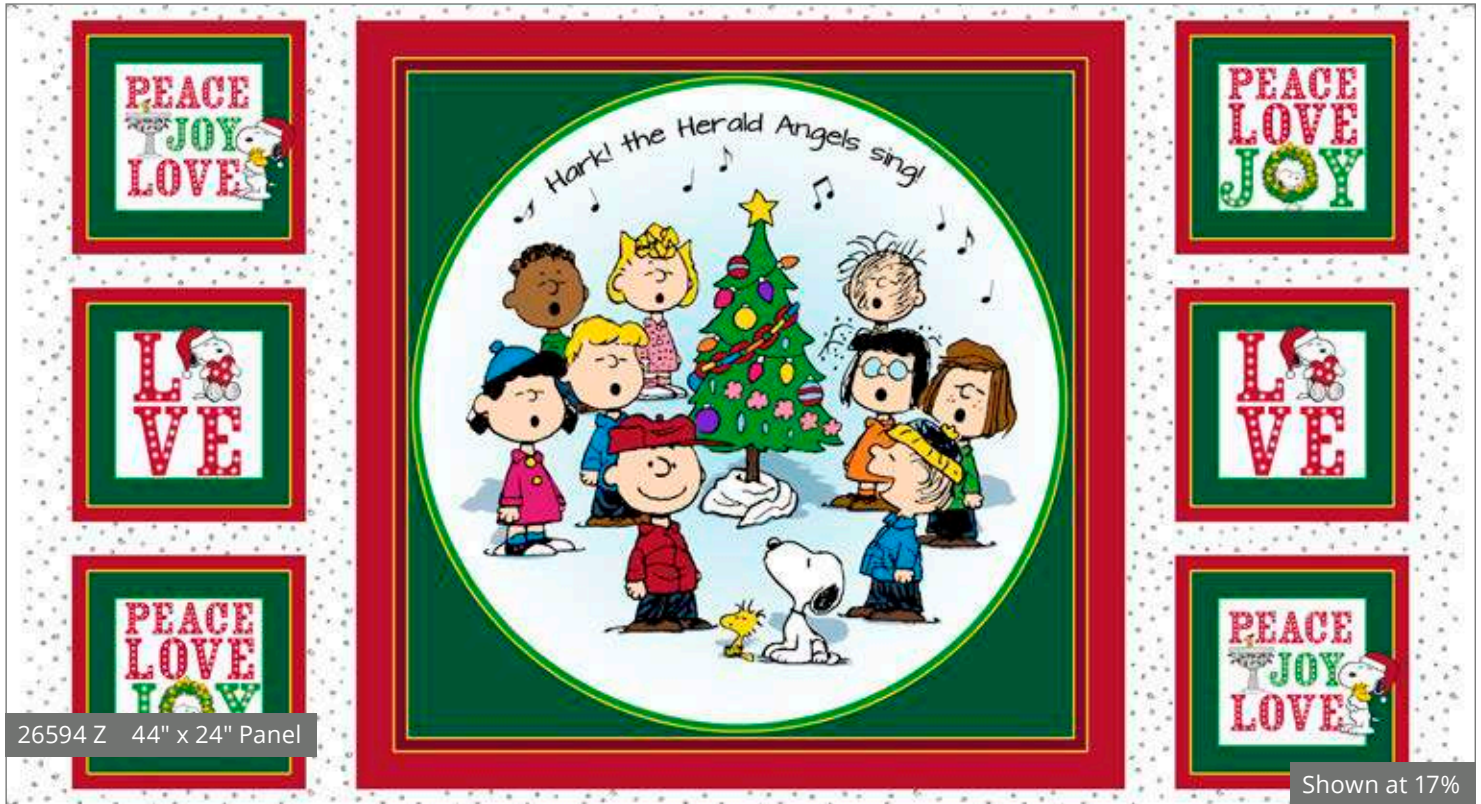


Pattern: Ruffle Trio LG from Indygo Junction

# PEACE LOVE JOY

Our favorite gang come together to celebrate the season of peace, love and joy! Charlie and Snoopy are happily hanging out with friends and showing their spirit of Christmas. String the lights and decorate the tree together with your favorite Peanuts!

Orders in by February 15<sup>th</sup> will ship mid May



May Delivery  
4 Prints, 11 Color Combos



26595 B



26595 W



26595 Z



26596 Z



26596 G



26596 B



22156 G



22156 RM

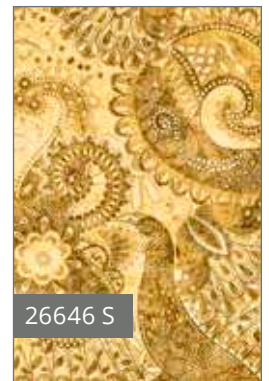
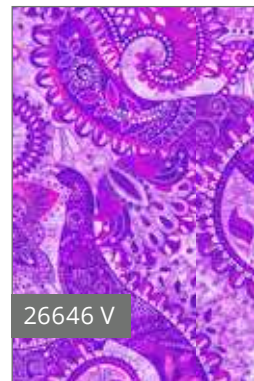
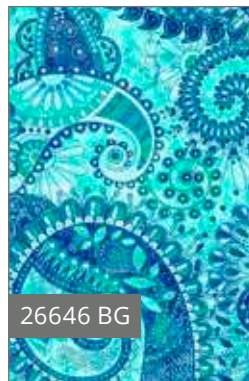


22156 Z

# Purr-suasion

A wonderful assortment of creative cat prints brought together with gorgeous color and decorative detail. The bold prints are purrfectly exotic and bring a lot of style potential for these feline friends. Create a colorful quilt for your favorite cat fan or celebrate your favorite kitty with home décor accents.

Orders in by February 15<sup>th</sup> will ship mid May

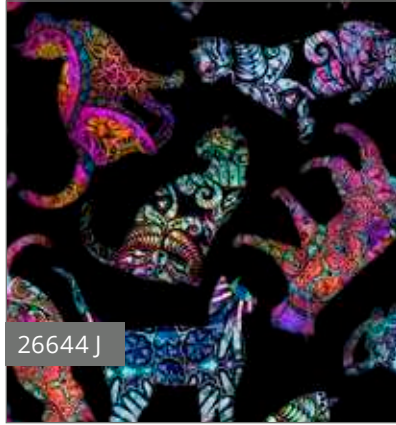




May Delivery  
7 Prints, 17 Color Combos



26644 E



26644 J



26644 Y



26647 Y



26647 K



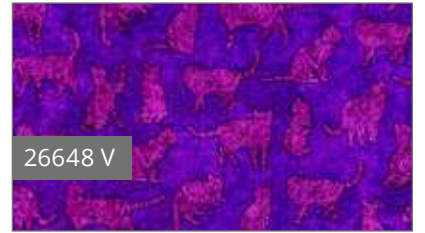
26647 E



Miranda Day Bag & Bendy Bag  
Projects For Sale from Lazy Girl Designs



26648 G



26648 V



26648 J

Dan Morris



# ROUND 'EM UP

A wonderful collection celebrating horses and the wild west. Cowboys are featured with their lassos; the patch print showcases distressed signs from your favorite saloon and the iconic horseshoe print brings together everything you need to Round Up a fun project.

Orders in by January 15<sup>th</sup> will ship mid April



26603 E



For inspiration only



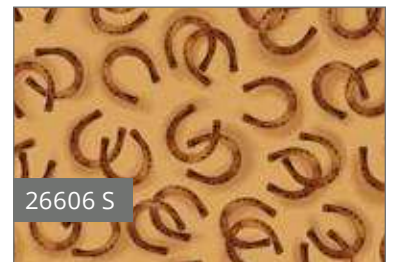
26603 A



26606 B



26606 E



26606 S

April Delivery  
4 Prints, 10 Color Combos



Cynthia Fisher  
Michelle Grant



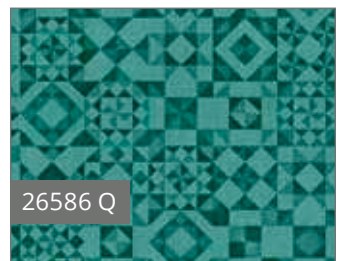
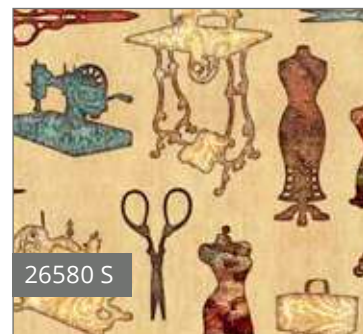
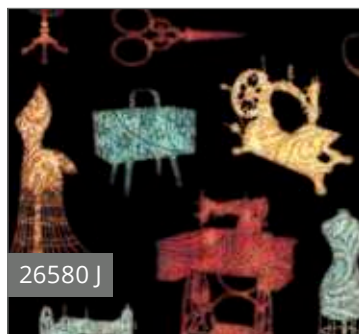
© Cynthia Fisher & Michelle Grant for JQ Licensing Designs shown at 50% scale

FREE Project from QT Fabrics - Square Tilt Quilt

# SEAMLESS

Our favorite subject is featured in this wonderful collection by Dan Morris. Sewing themed prints in Dan's signature styling make for great fabrics to feature in your next project. Buttons, spools, scissors and sewing machines all come together and as a whimsical tribute in this Seamless collection.

Orders in by January 15<sup>th</sup> will ship mid April



April Delivery  
9 Prints, 23 Color Combos



26581 J



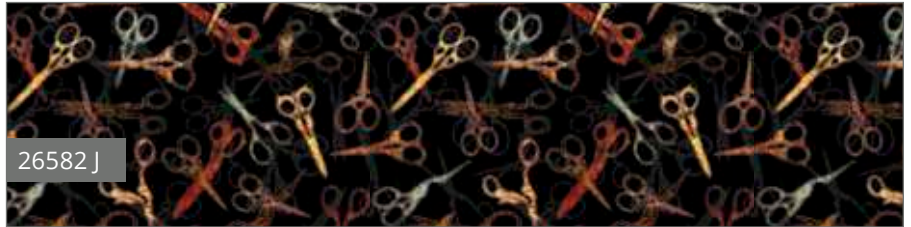
26582 S



26582 SE



26581 E



26582 J



26583 J



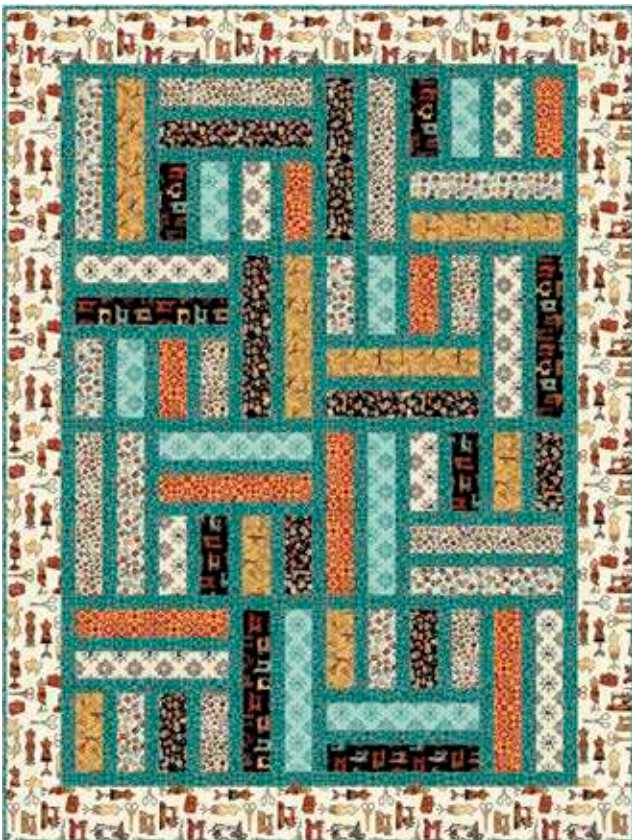
26583 Q



26583 E



26585 Q



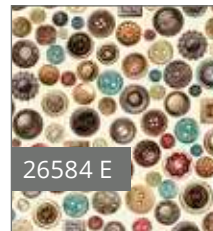
26585 A



26585 E



26584 J



26584 E

Dan Morris



# Southwestern Soul

Southwestern artwork continues to shine and bring life to home décor. The kokopelli motif is known as a meaningful icon in Southwestern art. Dan brings his detailed and decorative styling to this great theme.

Orders in by February 15<sup>th</sup> will ship mid May



26634 E 44" x 24" Panel



26634 Q 44" x 24" Panel

Shown at 12%



26635 Q 44" x 24" Panel

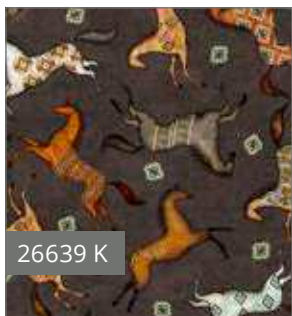


26635 J 44" x 24" Panel

Shown at 12%



26639 E

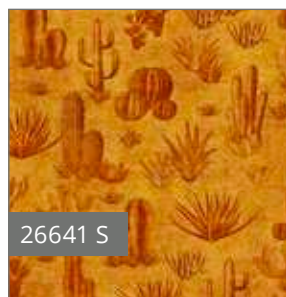
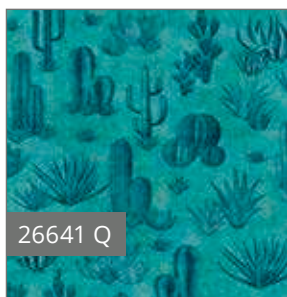
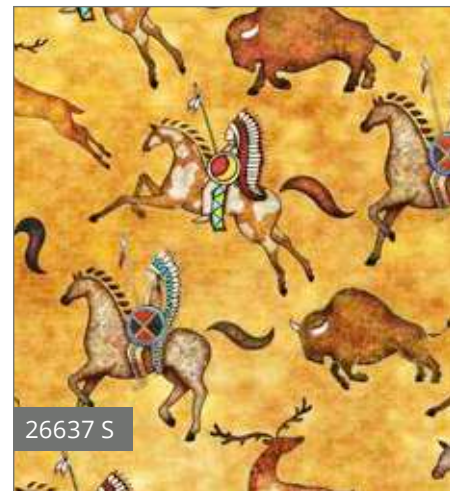


26639 K

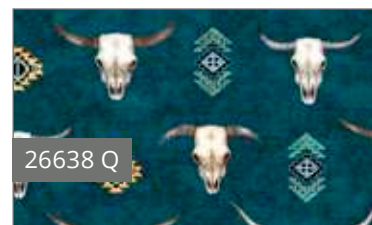
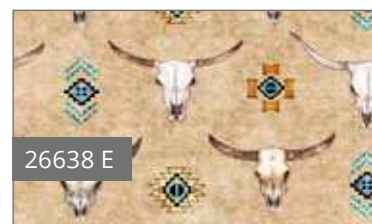
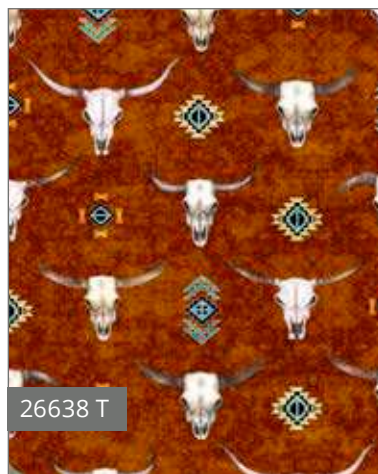


26636 X

May Delivery  
9 Prints, 19 Color Combos



Pattern: Rock Candy Topper from Jaybird Quilts



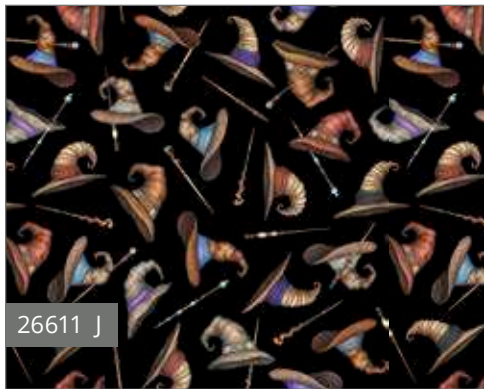
Dan Morris



# Spellbound

Dan Morris brings the fantasy world of wizards and spells to life with Spellbound. Create a magical project featuring potions, books of spells, wands and wise owls. The coordinates in vivid blues and purples complimented by rich black and cream come together in a wonderful, wizardy collection perfect for your favorite sorcerer.

Orders in by January 1<sup>st</sup> will ship mid March



Pattern: Envelope Pillow from QT Fabrics



March Delivery  
8 Prints, 19 Color Combos



Times 3 Quilt - Project For Sale from Mountainpeek Creations



26609 E



26609 J



26610 B



26610 E



26612 B



26612 E



26612 V



26614 E



26614 B



26614 J



26613 J



26613 K



26613 V

Dan Morris



# Splendid Swans

These beautiful fabrics celebrate the elegance and calm of these gorgeous water fowl. Rich colors and stunning details bring these fabrics a sophisticated style. The feather coordinate and geometric print are perfect pairings to the natural beauty of the swans.

Orders in by January 15<sup>th</sup> will ship mid April



26663 E 44" x 24" Panel

Shown at 18%



26665 B



26665 A



26665 W

April Delivery  
4 Prints, 9 Color Combos



Rebecca Latham



Pattern: Tara Tank Dress from Serendipity Studio

Rebecca Latham



# Three Wise Men

The journey of the three wise men is captured in folk art styling with this gorgeous collection by Sarah Summers. The branches and leaves, as well as the shimmering stars in multiple color options, allow for beautiful coordinates; a unique look for your next project to celebrate the season. Metallic accents of gold throughout ensure your project sparkles!

Orders in by February 15<sup>th</sup> will ship mid May



26402 W 36" x 44" Panel

Shown at 20%

METALLIC ACCENTS!

May Delivery  
3 Prints, 6 Color Combos

*Sarah Summers*



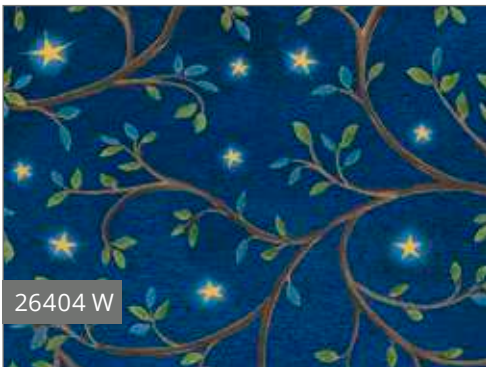
26403 N



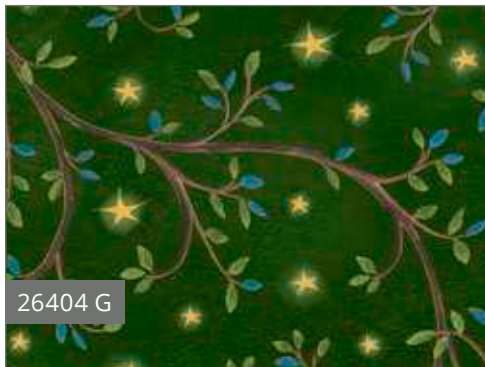
26403 B



26404 R



26404 W



26404 G



We Three Kings Quilt - Project For Sale from Pine Tree Country Quilts

Sarah Summers



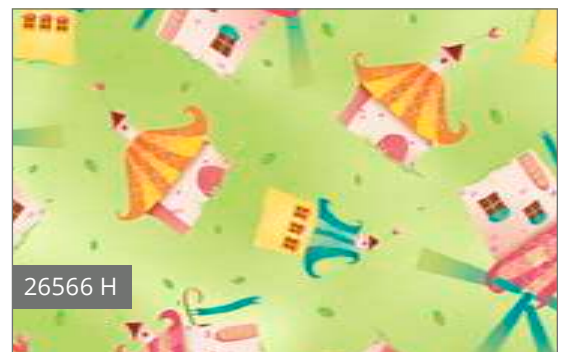
# Windmill Whimsy

Fresh color and sweet motifs combine for a cheerful collection by Denise Urban. Windmills and flowers in fun colors bring lighthearted whimsy to your sewing room. Create a project to spread the cheer.

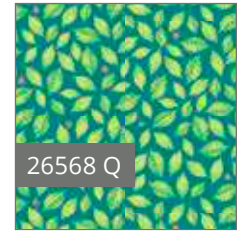
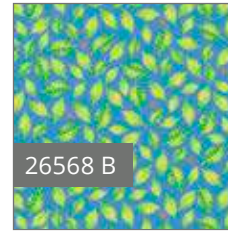
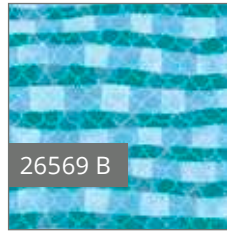
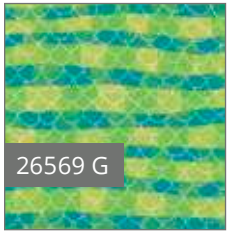
Orders in by January 1<sup>st</sup> will ship mid March



Pattern: Candy Dish Pillow from Jaybird Quilts



March Delivery  
5 Prints, 13 Color Combos



© Denise Urban  
Designs shown at 25% scale

FREE Project from QT Fabrics - Windmill Whimsy Quilt

Denise Urban



# Woodland Dream

A gathering of woodland animal friends turns into a Woodland Dream by Sarah Summers. Rich navy and soft taupe colors throughout, offer a seasonal delight of opportunities for beautiful projects with sophisticated detail. Large patches and stunning feature panels ensure your projects will make a bold statement.

Orders in by January 15<sup>th</sup> will ship mid April

26473 A 24" x 44" Panel



26473 B 24" x 44" Panel

Shown at 15%



26475 B



26475 A



26476 B



26476 A



Pattern: Basket Pop-Up 8"  
from Fat Quarter Gypsy



26474 N 44" x 24" Panel



26474 A 44" x 24" Panel



Shown at 15%



Woodland Dream Runner - Project For Sale from Pine Tree Country Quilts



26477 B



26477 A



26478 N



26478 A



26478 R

Sarah Summers



Junebee 

FOR INK & ARROW FABRICS





← INK & ARROW →  
FABRICS

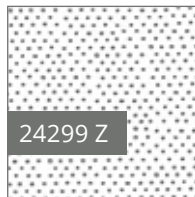
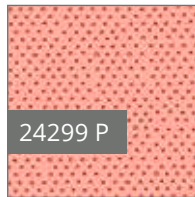
# April Showers

These soft and pretty flowers are brought to you by April Showers. A garden of fountains and flowers in fresh colors await your next creative pursuit. The aqua and blush palette bring a sweet sophistication to these soft prints.

Orders in by January 1<sup>st</sup> will ship mid March



look for us  
in every print



Pattern: Sally Shirtdress from Serendipity Studio

March Delivery  
3 Prints, 8 Color Combos



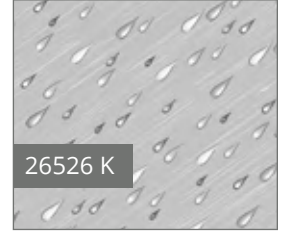
Miranda Day Bag & Bendy Bag  
Projects For Sale from Lazy Girl Designs



26526 C



26526 Q



26526 K



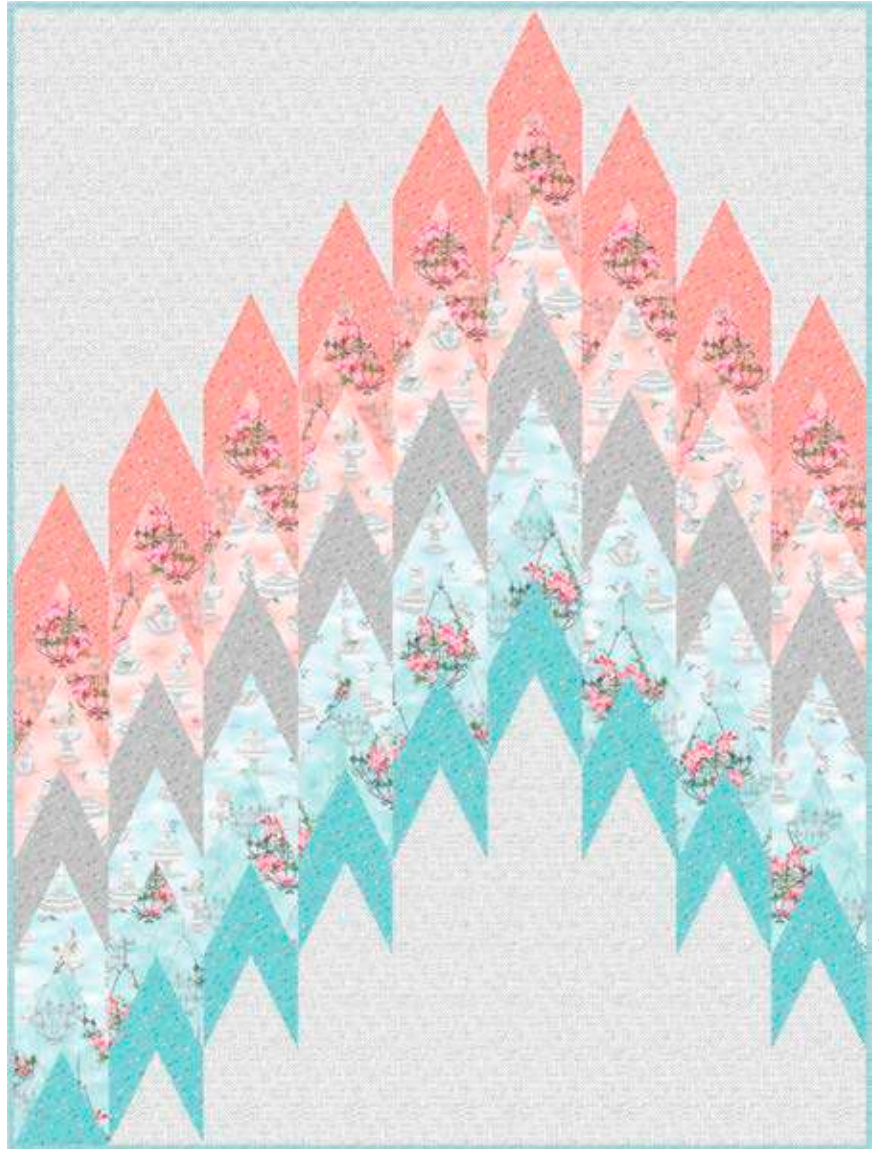
26525 C



26525 Z



26525 Q



Firelights Lane Quilt - Project For Sale from Sassafress Lane

© Ink & Arrow Fabrics  
Designs shown at 25% scale

Ink & Arrow



# BOOS & GHOULS

All tricks and no treats with this fun inaugural Halloween collection by Alicia Dujets for Ink & Arrow. The potions and spells await your favorite spooky cats and tricksters. Creepy ghouls tell their stories from the graveyard... it's a boo-tiful collection of ghoulish fun!

Orders in by January 1<sup>st</sup> will ship mid March

look for us  
in every print  
→



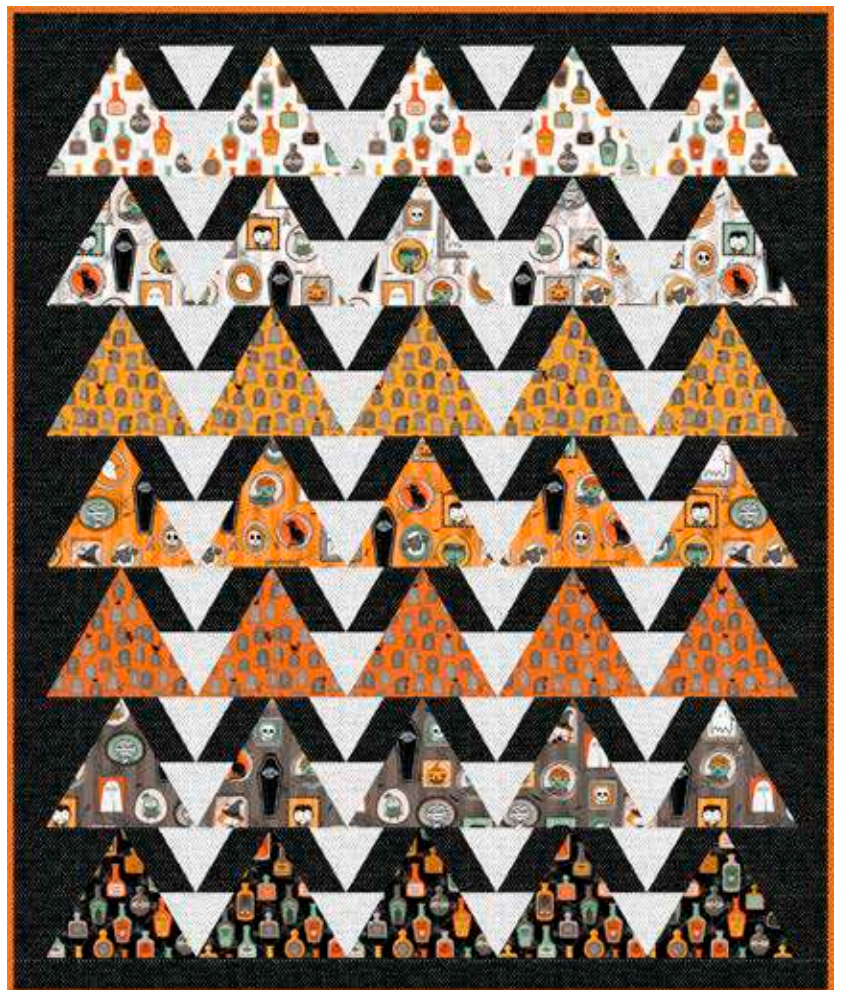
26562 Z



26562 O



26562 K



March Delivery  
4 Prints, 9 Color Combos

Pattern: Marilyn Dress from Serendipity Studio



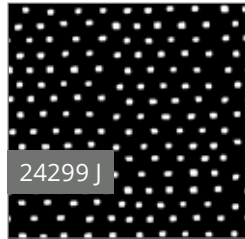
26563 J



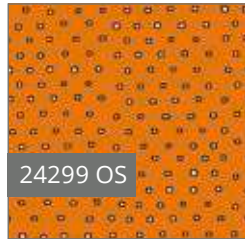
26563 Z



26564 S



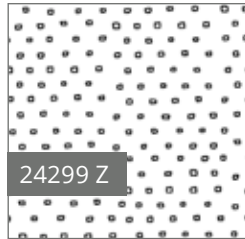
24299 J



24299 OS



26564 J



24299 Z



Pattern: Basket Pop-Up 8" from Fat Quarter Gypsy

Designs shown at 50% scale

© Ink & Arrow Fabrics



26564 O



**PRINTS**

Turn the dial to retro! These great prints showcase the fun of vintage radio. In fun colors, the peach, cream and mint with black accents really celebrate the retro vibe! W-INK radio is here with this great new collection of offbeat prints perfect for a project that will surely be a top 40 hit!

Orders in by January 15<sup>th</sup> will ship mid April



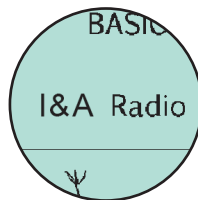
26507 E



26507 J



look for us  
in every print



Pattern: Applejack Tablet Case from Wives of Whitewood



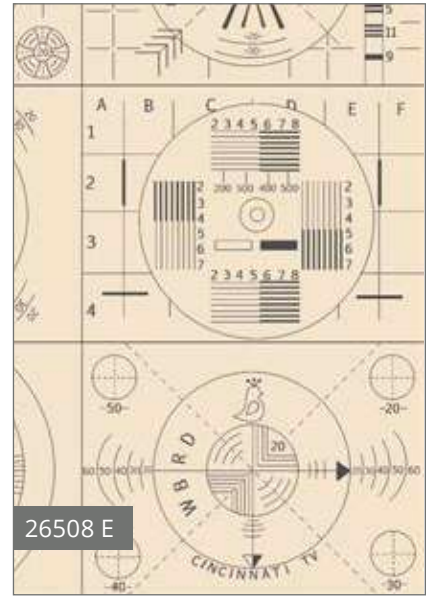
April Delivery  
3 Prints, 8 Color Combos



26508 X



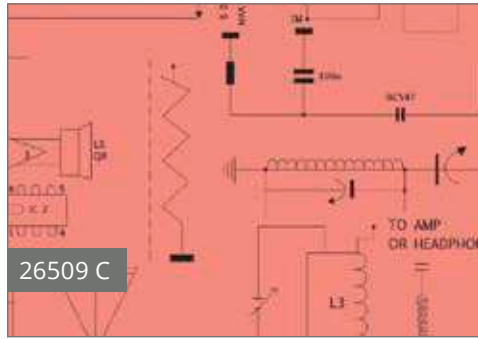
26508 J



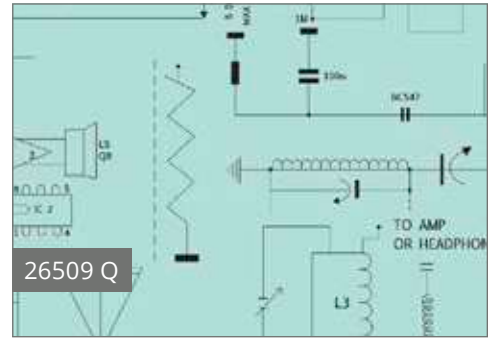
26508 E



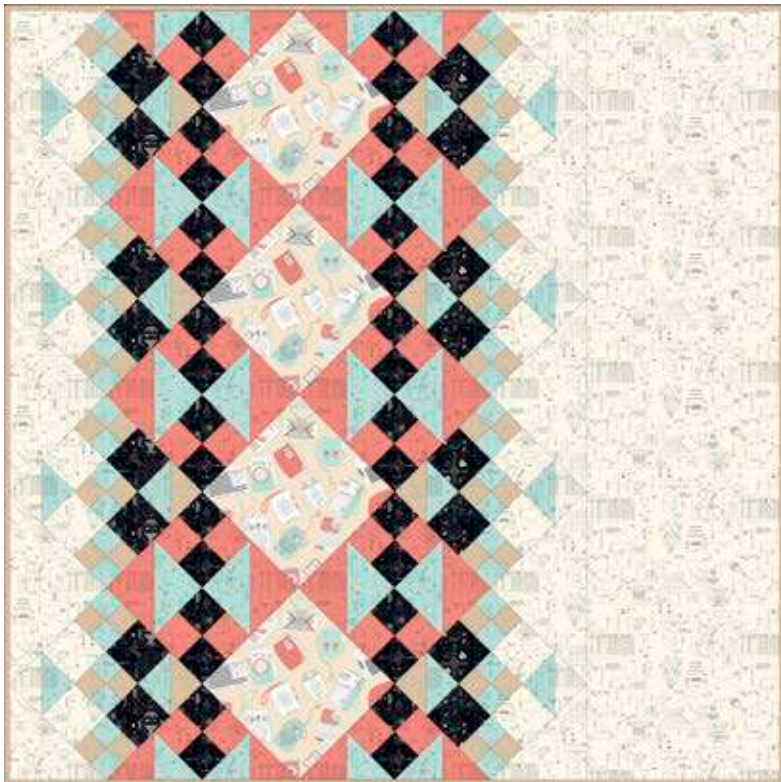
26509 E



26509 C



26509 Q



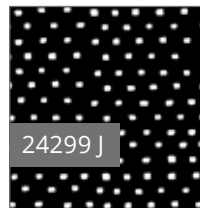
24299 P



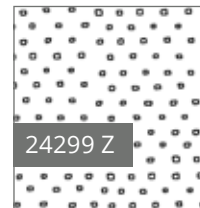
24299 AE



24299 QH



24299 J



24299 Z



Judy Gauthier

© Judy Gauthier for Ink & Arrow Fabrics  
Designs shown at 50% scale

Frequency Quilt - Project For Sale from The Stitch TV

# Twinkle Twinkle

Alicia Dujets brings more twinkle and cheer with her new Christmas collection! Let's look out the window and see if Santa is coming! Fun constellations showcasing Christmas motifs, snow globes, and of course, strings of lights bring Twinkle Twinkle to life, all in a fun color palette. We can't wait for Santa to arrive!

Orders in by February 15<sup>th</sup> will ship mid May



26630 H



26630 B



26632 H



26632 B



26632 R



Pattern: Dinner's Ready Placemat from QT Fabrics

look for us  
in every print



May Delivery  
5 Prints, 10 Color Combos



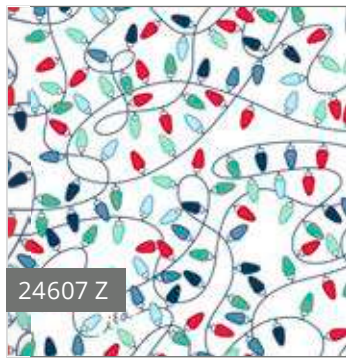
26631 N



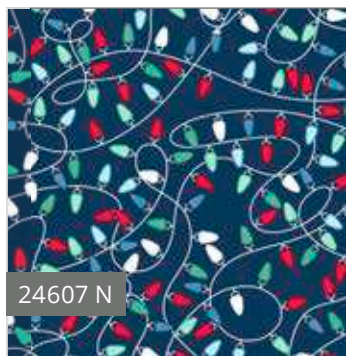
26631 Z



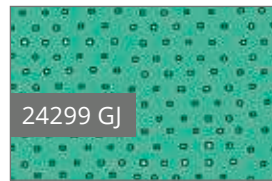
Wynkoop Court Quilt - Project For Sale from Sassafras Lane



24607 Z



24607 N



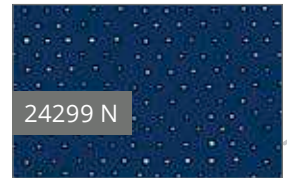
24299 GJ



24299 R



24299 ZR



24299 N

Valicia  
JACOBS DUJETS



# Olivia

Let the mix and match party begin! Olivia for Junebee delights with her sunshine colors blended with spring green and bold pinks. Dots and wavy stripes paired with paisley and flowers create a fun and fresh collection!

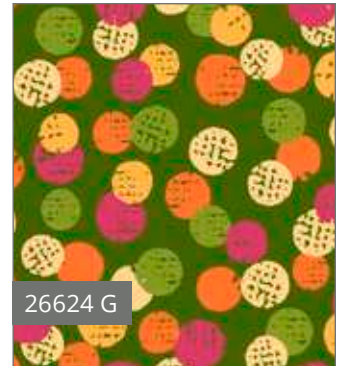
Orders in by February 15<sup>th</sup> will ship mid May



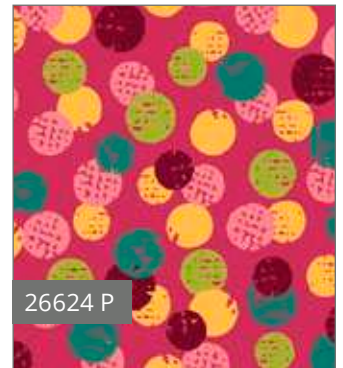
26620 X



26624 M



26624 G



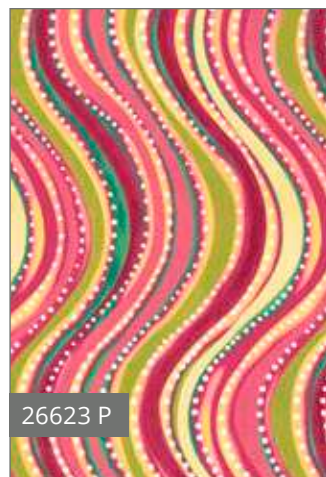
26624 P



26623 O



26623 H

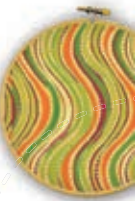
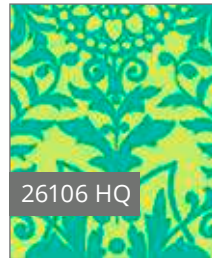
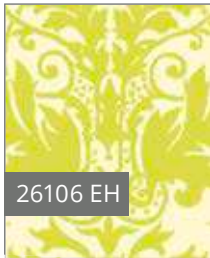
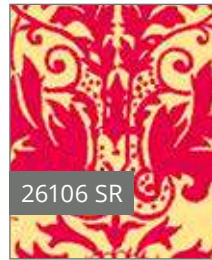
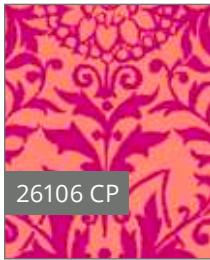


26623 P



Pattern: Banded Beauty Headband from Indigo Junction

May Delivery  
5 Prints, 13 Color Combos



Ink & Arrow



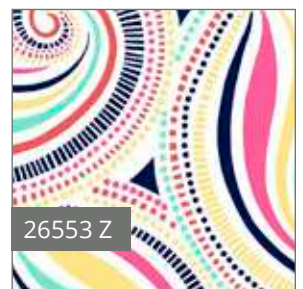
# PENELOPE

A painter's palette of flowers and brush strokes combined with fun paisleys and friendly frogs. So many bold options and potential for mixing and matching these prints for a truly unique project of prints that pop!

Orders in by January 1<sup>st</sup> will ship mid March



Pattern: Marilyn Dress from Serendipity Studio



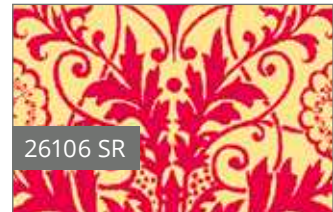
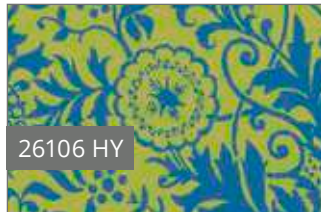
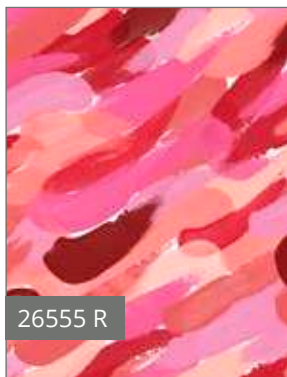
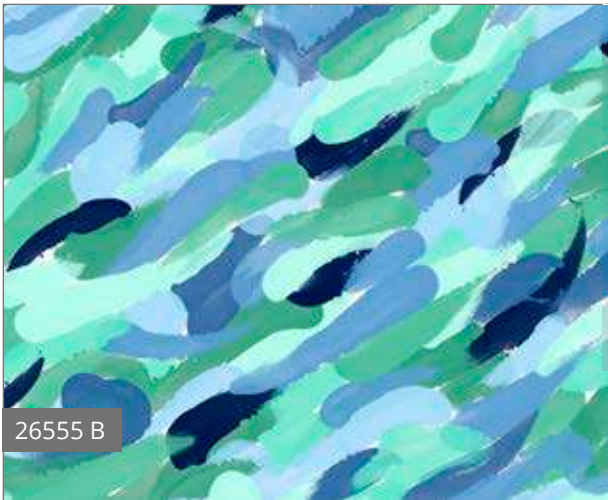
March Delivery  
5 Prints, 14 Color Combos



Drift Quilt - Project For Sale from Sew Many Creations



Pattern: Wingman Pop-Up Pincushion from Fat Quarter Gypsy



© Junebee for Ink & Arrow  
Designs shown at 50% scale

Ink & Arrow



# tango

Graphic and bold prints unite for a stylish collection with lots of possibilities. Mix butterflies with dots and textural coordinates with striking painterly prints and you've got the recipe for a fun project with lots of impact.

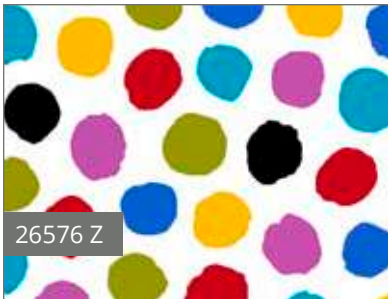
Orders in by January 15<sup>th</sup> will ship mid April



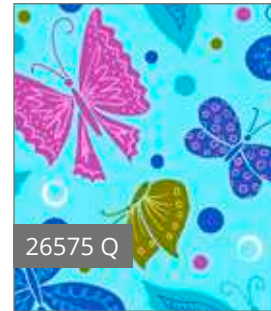
Pattern: Very Mary Apron from Indygo Junction



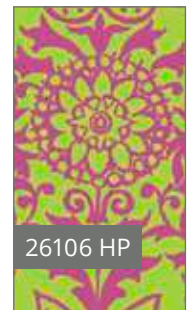
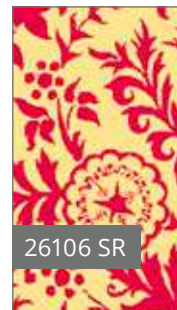
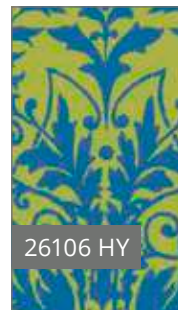
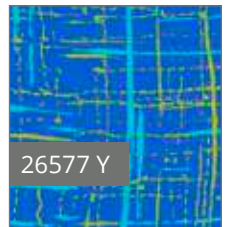
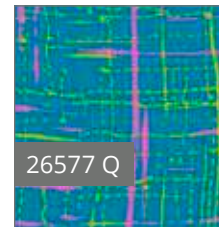
April Delivery  
5 Prints, 14 Color Combos



Pattern: Everyday Tank from Indigo Junction



Orbit Quilt - Project For Sale from Sew Many Creations



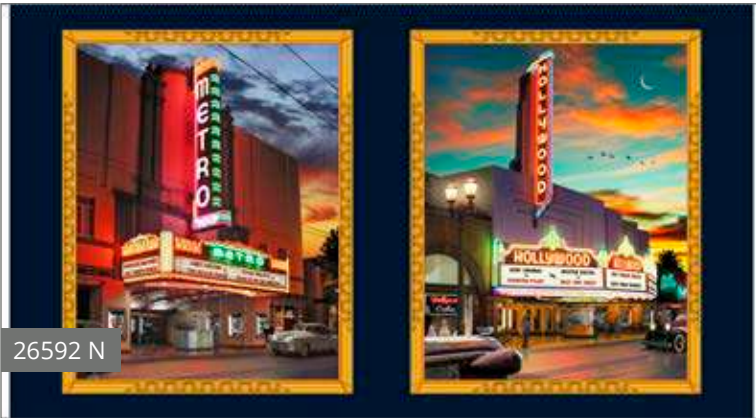
Ink & Arrow



# ARTWORKS

Our library of gorgeous digital prints has expanded. Travel the world with our mini travel poster panel or discover the ocean floor with the beautiful Turtle panel and pillow patches. Rustic country barns or retro cafés and diners offer lots of variety and fun for your creativity. There is something for everyone!

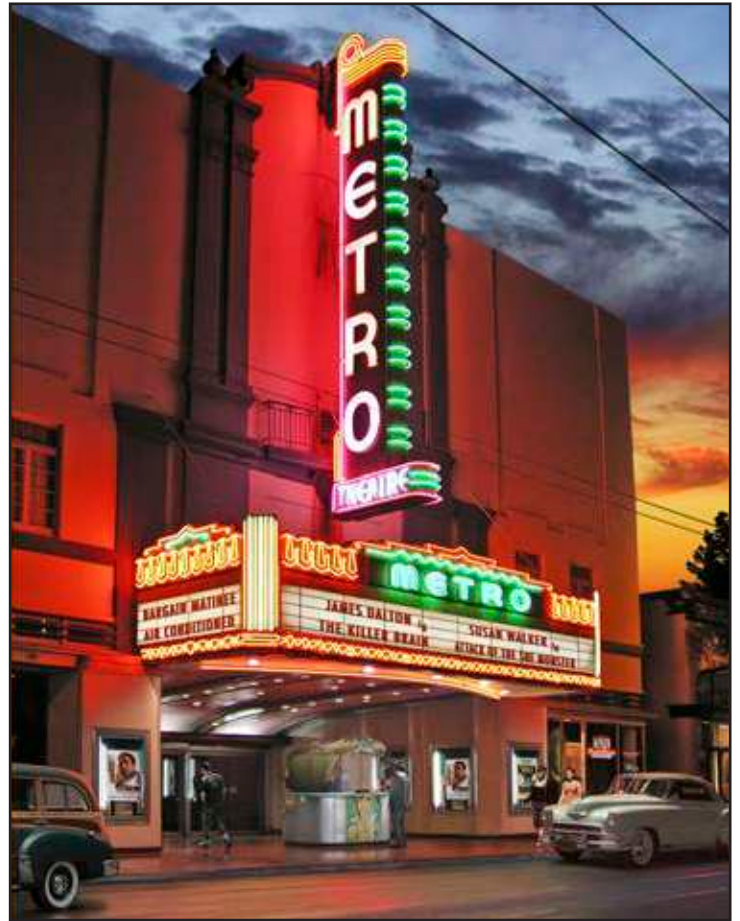
Orders in by January 1<sup>st</sup> will ship mid March



26592 N

Retro Marquee Picture Panel  
© Larry Grossman

44" x 24"



CLOSE UP OF RETRO MARQUEE PICTURE PANEL 26592 N (shown at 25%)



26591 Q

Retro Diner Picture Patches  
© Larry Grossman

44" x 36"



CLOSE UP OF RETRO DINER PICTURE PATCHES 26591 Q (shown at 25%)



26593 X

Packed Marquees  
© Larry Grossman

ALLOVER REPEAT  
(shown at 25%)



26589 B

Turtles Picture Panel  
© Jeff Wilkie 44" x 36"



26590 X

Barns Picture Patches  
© Larry Hershberger 24" x 44"



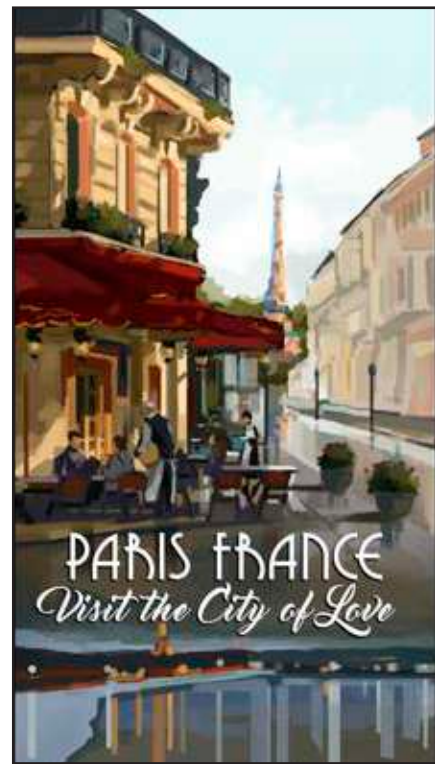
26588 B

Under the Sea Picture Patches  
© Jeff Wilkie 44" x 24"



26587 X

Travel Posters  
© David Owens 44" x 36"

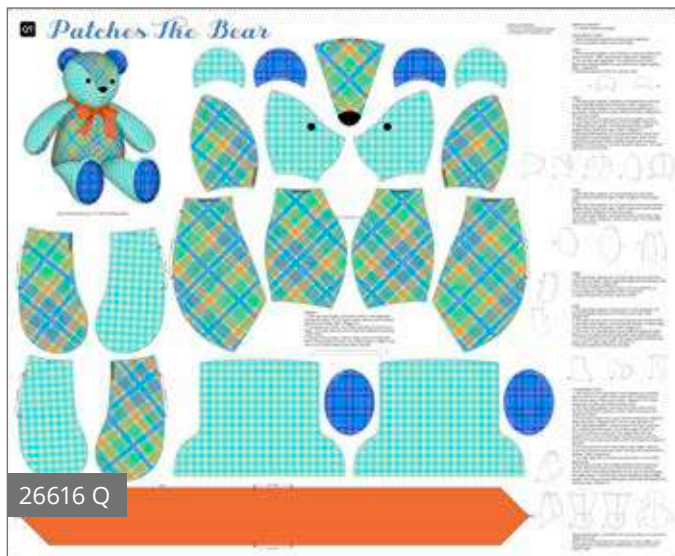


CLOSE UP OF TRAVEL POSTERS 26587 X  
(shown at 25%)

# Sew & Go

Sew many projects! Our Sew & Go library has expanded to give you more options for gifting! These panels are great to grab, sew & go! There are options for lots of different fun projects and these panels are a great opportunity to teach the next generation of sewists your favorite past-time.

Orders in by January 15<sup>th</sup> will ship mid April



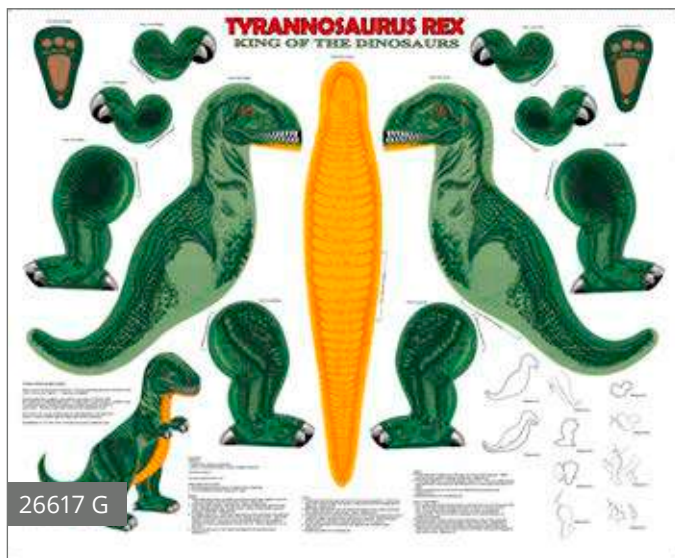
26616 Q



26616 R



26616 K



26617 G



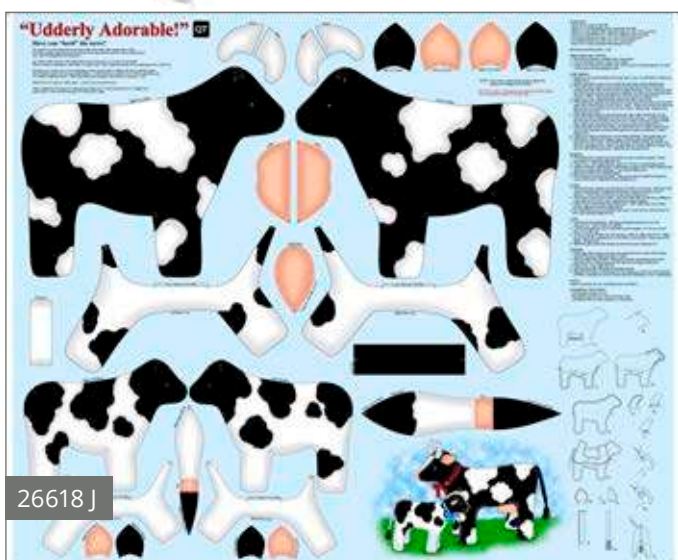
26617 Q



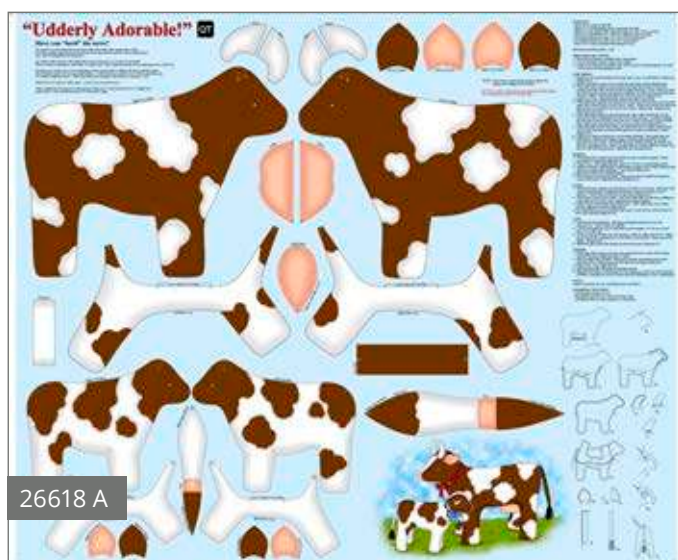
26615 X

All designs shown are 36" x 44" unless otherwise noted

April Delivery  
5 Prints, 9 Color Combos



26618 J



26618 A



26619 R 44" x 24" Panel

METALLIC ACCENTS!

Shown at 15%

**Along the Countryside**



61" x 71"

**QT**

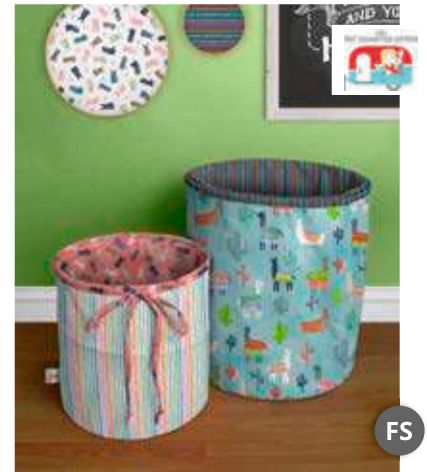
**Along the Countryside**



63" x 68"

**QT**

**Alpaca Picnic**



10½" D x 11" H | 14" D x 16" H

**FS**

**Alpaca Picnic**



34" x 46"

**FS**

**April Showers**



12" x 10" x 6" | 3" x 6" x 6"

**FS**

**April Showers**



45" x 60"

**FS**

**April Showers**



10½" D x 11" H | 14" D x 16" H

**FS**

**Artworks - Bridges**



65" x 77"

**QT**

**Artworks - Turtles**



54½" x 80½"

**FS**

We've created many exciting partnerships with pattern designers to bring you top quality inspiration using QT Fabrics.

# PROJECTS

**Autumn Shimmer**



57" x 61"

**Boos & Ghouls**



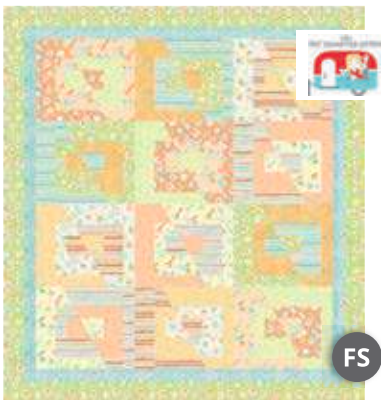
50" x 60"

**Boos & Ghouls**



8" D x 14" H

**Dino-mite**



63" x 69"

**Dino-mite**



10½" D x 11" H | 14" D x 16" H

**Frequency**



69" x 69"

**Frequency**



56" x 72"

**Harlow**



54" x 67½"

**Harlow**



11" x 11½" x 4½"

**Harlow**



59" x 71"

**Holiday Minis**



48" x 50"

**FS**

**Jacqueline**



57" x 63"

**FS**

**Jacqueline**



12" x 10" x 6" | 3" x 6" x 6"

**FS**

**Jacqueline**



95" x 107"

**FS**

**Mermaid Merriment**



56" x 64"

**FS**

**Miracle in Bethlehem**



52½" x 43½"

**FS**

**Olivia**



11" x 11½" x 4½"

**FS**

**Olivia**



71" x 71"

**QT**

**Ombre Stitches**



61" x 73"

**FS**

**Ombre Stitches**



32" x 32"

**FS**



We've created many exciting partnerships with pattern designers to bring you top quality inspiration using QT Fabrics.

# PROJECTS

**Penelope**



60" x 75"

FS

**Purr-suasion**



12" x 10" x 6" | 3" x 6" x 6"

FS

**Purr-suasion**



58" x 78" | 24" x 24"

FS

**Round 'Em Up**



61" x 78"

QT

**Seamless**



62" x 84"

FS

**Spellbound**



53½" x 71½"

FS

**Tango**



49" x 63"

FS

**Twinkle Twinkle**



61" x 72"

FS

**Three Wise Men**



34" x 57"

FS

**Windmill Whimsy**



41½" x 49½"

QT

**Woodland Dream**



41" x 56"

FS

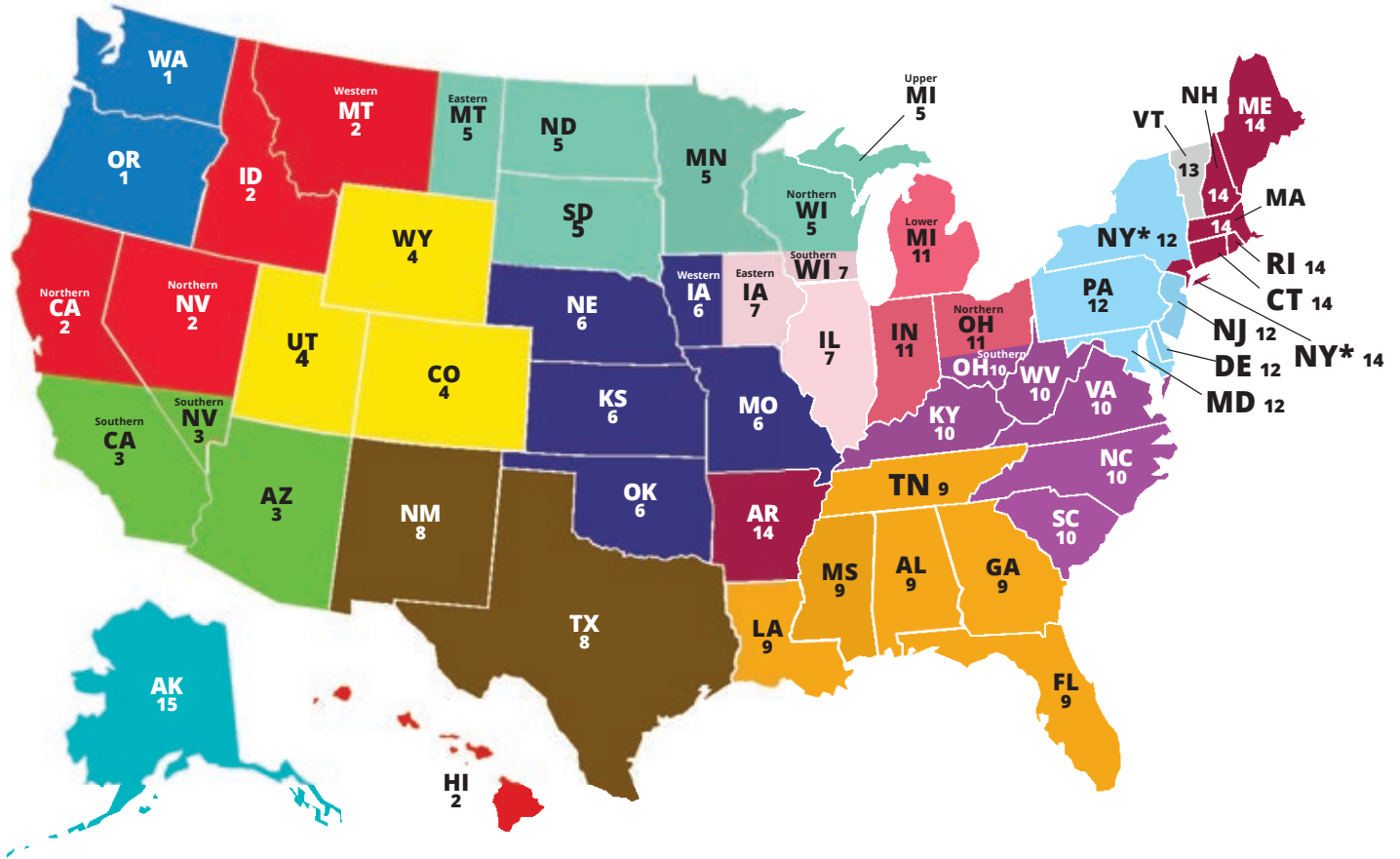
**Woodland Dream**



16" x 48" | 19" x 14"

FS

# REGIONAL SALES MANAGERS



**OR, WA**  
Regional Sales Manager  
**Martha Manning-Jurey**  
Portland, OR  
Cell: 904.226.8020  
Fax: 800.540.7063  
Email: mjurey@cpw.com



**Northern CA, HI, ID, Western MT, Northern NV**  
Regional Sales Manager  
**Ann Haley**  
San Ramon, CA  
Cell: 925.785.8117  
Fax: 800.540.7063  
Email: ahaley@cpw.com



**AZ, Southern CA, Southern NV**  
Regional Sales Manager  
**Barbara Wing**  
Hawthorne, CA  
Cell: 310.339.4515  
Fax: 800.540.7063  
Email: bwing@cpw.com



**CO, UT, WY**  
Regional Sales Manager  
**Debra Coffman**  
Denver, CO  
Cell: 303.907.8624  
Fax: 800.540.7063  
Email: dcoffman@cpw.com



**Upper MI, MN, Eastern MT, ND, SD, Northern WI**  
Regional Sales Manager  
**Kay Peterson**  
Owatonna, MN  
Cell: 507.475.2529  
Fax: 800.540.7063  
Email: kpeterson@cpw.com



**OR, WA**  
Regional Sales Manager  
**Coby J. McComas**  
Lee's Summit, MO  
Cell: 816.803.8195  
Fax: 800.540.7063  
Email: cmccomas@cpw.com



**Eastern IA, IL, Southern WI**  
Regional Sales Manager  
**Sarah Maylath**  
Plainfield, IL  
Cell: 815.715.9914  
Fax: 800.540.7063  
Email: smaylath@cpw.com




**NM, TX**  
Regional Sales Manager  
**Tammie Randle**  
Bedford, TX  
Cell: 817.946.2975  
Fax: 800.540.7063  
Email: trandle@cpw.com



**AL, FL, GA, LA, MS, TN**  
Regional Sales Manager  
**Mike Flynn**  
Atlanta, GA  
Cell: 205.478.7679  
Fax: 800.540.7063  
Email: mflynn@cpw.com



**DC, KY, NC, Southern OH, SC, VA, WV**  
Regional Sales Manager  
**David Markey**  
Burlington, NC  
Cell: 336.516.1495  
Fax: 800.540.7063  
Email: dmarkey@cpw.com



**IN, Lower MI, Northern OH**  
Regional Sales Manager  
**Jayne Clark**  
Danville, IN  
Cell: 317.509.1312  
Fax: 800.540.7063  
Email: jclark@cpw.com



**DE, MD, NJ, NY\***  
Regional Sales Manager  
**Kevin Driscoll**  
Aberdeen, NJ  
Cell: 732.310.0145  
Fax: 800.540.7063  
Email: kdriscoll@cpw.com  
\*excluding south & east of Route 287




**VT**  
Regional Sales Manager  
**Ken Gamache**  
Cranston, RI  
Cell: 508.948.8119  
Fax: 800.540.7063  
Email: kgamache@cpw.com



**AR, CT, MA, ME, NH, NY\*, RI**  
Sales Manager  
**Jesus Montero**  
New York, NY  
Cell: 347.968.4427  
Fax: 800.540.7063  
Email: jmontero@cpw.com  
\*defined as south & east of Route 287



**AK**  
Independent Rep  
**Janai Comer**  
Valdez, Alaska  
Cell: 907.831.1055  
Fax: 800.540.7063  
Email: seiscafe@cvinet.net



# INTERNATIONAL DISTRIBUTORS

If you are a potential wholesale customer and do not see your country or region listed, please contact our International Sales Manager.

## EUROPE

**International Sales Manager, Europe**  
**Mode-Meter AG**  
PO Box 317  
Baselstrasse 22 B  
CH-4125  
Riehen/Basel  
Dieter Roesch  
Marie Roesch  
Tel: +41-61-643-0560  
Mobile: +49-171-731-2958  
Fax: +41-61-643-0561  
Email: Mode-Meter@mode-meter.ch

## AUSTRALIA

**XLN Fabrics**  
2/21 Binney Rd.  
Kings Park  
NSW 2148  
Australia  
Tel: +61-2-9621-3066  
Fax: +61-2-9622-3074  
Email: allanmurphy@xln.com.au

## BRAZIL

**Fernando Maluhy CIA Ltda**  
Rua Cav. Basilio Jafet, 38  
8.0 Andar Sala 804  
Sao Paulo, SP Brazil 0122020  
Mr. Fernando Maluhy  
Tel: +5511-3325-2015  
Fax: +5511-3325-2015  
Email: bernardo@fernandomaluhy.com.br  
Email: fernandomaluhy@fernandomaluhy.com.br

## CANADA

**International Textiles Ltd.**  
8811 Beckwith Rd.  
Richmond, B.C.  
Canada V6X 1V4  
Tel: +604-270-7593  
Fax: +604-270-7598  
Email: intex.sales@shawbiz.ca

## CHILE

**Comercial Golf SpA**  
Independencia 369 local 13  
Independencia 8380000  
Santiago, Chile  
Ester Benquis  
Tel: +56-2-6966996  
Email: ebenquis@gmail.com

## COLOMBIA

**Bodega Decorativa, DECORModa Textiles**  
Carrera 81 No. 32-330  
Medellin, Antioquia  
Colombia  
Tel: +57-4-576-0570  
Fax: +57-4-250-7617  
www.decormoda.com.co  
E-mail: decormoda@decormoda.com.co  
Contact: Juan Daniel Orrego Pizano

**Arte y Manualidades**  
Calle 6A #47-79  
Cali, Colombia  
America Rivas  
Tel: +57-2-552-3957  
Fax: +572-405-4966  
Email: america362@yahoo.com

**Telas y Tonos**  
Calle 125 No 21a-39  
Bogota, Colombia  
Raphael Ochoa  
Tel: +57-1-215-1555  
Email: administracion125@telasytonos.com

## COSTA RICA

**El Costurero**  
1314-2150 San Jose  
Costa Rica  
Maria Teresa Arteaga  
Rocio Flaqué  
Tel: +506-2225-9534  
Fax: +506-2225-0526  
Email: elcosturero@racsa.co.cr

## CYPRUS

**K. Didonian Textiles**  
16 Constantinou  
Kava Fl Street P. code 30,76  
Limassol, Cyprus  
Tel: +357 25 331 739  
Fax: +357 25 387 476  
Email: dingdong@cytanet.com.cy  
Mr. Richard Didonian

## CZECH REPUBLIC

**Cotton Kingdom**  
Patchwork & Quilting Fabrics Wholesale  
Svambovee 354  
760 01 Zlin  
Czech Republic  
Tel: +420 603235078  
Email: kos.libor@hotmail.com  
Mr. Libor Kos  
  
**Siti Niti**  
Ochoz u Brna 624E  
66402  
Czech Republic  
Email: info@sitiniti.cz  
www.sitiniti.cz  
Eva Maresova

## ECUADOR

**El Costurero**  
Datiles y Primera Local 15  
Centro Comercial Urdesa  
Guayaquil, Ecuador  
Sara De Gagliardo  
Tel: +5934-238-9616  
Fax: +5934-238-3985  
Email: elcosturero@gye.satnet.net

## FRANCE/BELGIUM

**PASCAL et BEATRIX**  
48 rue Gustave Eiffel  
ZA Albitech  
81000 Albi  
Mr Geoffrey Davi  
Tel: +33-05-63-45-22-44  
Mobile: +33-06-80-65-40-11  
Fax: +33-05-63-54-29-66  
Email: contact@pascaletbeatrice.com

## GERMANY & AUSTRIA

**Zweigart & Sawitzki**  
Fronackerstrasse 50  
D-71063 Sindelfingen  
Germany  
Mrs. Klotz  
Mr. Michael Georgii  
Tel: +49-70-31-795414  
Fax: +49-70-31-795476  
Email: fboudouin@zweigart.de

## GUATEMALA

**Casa Decora & CIA Ltda**  
Primera calle 18-83  
Zona 15  
Local 23 Vista Hermosa II  
Guatemala, Guatemala  
Miriam De Palacios  
Tel: +502-2369-6477

## ITALY

**HFT SRL**  
Viale Piave 60  
24022 Alzano Lombardo (BG)  
Italy  
Tamara Morzenti  
Tel: +39 035 512 450  
Fax: +39 035 515 466  
Web: www.hft.it

## JAPAN

**Kiyohara & Co., Ltd.**  
5-2 Minamikyuhoji  
4-Chome, Chuo-Ku  
Osaka, Japan  
Kaz Fujii  
Tel: +8166-252-4764  
Fax: +8166-252-4377  
Email: kazuo.fujii@kiyohara.co.jp

**Lecien Corporation**  
7F Yotsubashi Grand Square,  
1-28-3 Shinmachi,  
Nishi-ku Osaka 550-0013  
Mr. Fuminori Ito  
Tel: +06-4390-5526  
Fax: +06-4390-5516

## MEXICO

**Grupo Parisina**  
Venustiano Carranza No. 77  
Col. Centro  
Mexico City, Mexico 06060  
Juan Jose Sierra Requejo  
Tel: +525-55512-2353  
Fax: +525-55521-2145

## NETHERLANDS

**Rinske Stevens Design B.V.**  
Costerweg 4C  
4104 AJ CULEMBORG  
Netherlands  
Tel: +31-345788-999  
Fax: +31-847360-013  
Email: info@rinskestevensdesign.com

## NEW ZEALAND

**Tiffanies Treasures**  
PO Box 300-194  
Albany, Auckland  
New Zealand  
Mr. Pawan Kalsi  
Tel: +64-9-477-0155  
Fax: +64-9-476-7240  
Email: info@tiffaniestreasures.co.nz

## PUERTO RICO

**Cabrera Marketing Co.**  
#95 Calle La Cambija Ste. 7  
Bayamon, P.R. 00961  
Tel: +787-787-7890 or 778-7875  
Fax: +787-269-6982  
Noel Cabrera  
Email: cabreramarkpr@gmail.com

**J. Pica & Co, Inc(Tiendas Capri)**  
Calle A. Esq. Escorial  
Urb. Industrial Mario Julia  
Puerto Nuevo, PR 00920  
Jose Acosta  
Tel: +787-793-7575  
Fax: +787-793-0668  
Email: jacosta@jpica.com

## RUSSIA

**Gela LTD**  
141400, Vladenije 13B  
Vashutinskoje shosse  
Chimki, Moscow area  
Russia  
Anton Shcherbakov  
Tel: +74 95 742 50 43  
Fax: +74 95 742 80 70  
Web: www.gela.ru  
Email: anton@gela.ru

## SAUDI ARABIA

**Al Zamil Stores**  
PO Box 217  
Al Khobar 31952, Saudi Arabia  
Tel: + 966 3 864 1919  
Fax: + 966 3 864 9190  
Email: Zamix@sahara.com.sa  
Mr. Azuver Saleem

## SCANDINAVIA

**Adlico Textile ApS.**  
Merkurvej 2  
7430 Ikast  
Denmark  
Mr. Thomas Eriksen  
Mr. Jon Christensen  
Tel: + 45 978 625 25  
Fax: + 45 978 625 24  
Mobile: + 45 299 261 08  
Handy: + 49 151 616 048 71  
Email: jon@adlico.dk  
Web: http://www.adlico.dk

## SINGAPORE

**Sing Mui Heng (PTE) Ltd**  
315 Outram Road #05-09 Tan Boon Liat  
Building  
Singapore 169074  
Tel: +65-6221-9209  
Fax: +65-6223-4884  
Sim Piah Hui  
Email: mgt@singmuiheng.com

## SLOVAKIA

**Daša Kozmárová - Bubuláková**  
Lužná 2320/6  
Šal'a 927 05  
www.bubulakovo.sk  
www.bubulakovo.cz  
www.bubulakovo.hu

## SPAIN/PORTUGAL

**ALBA Patchwork S.L.**  
C. Orient, 12  
E-43204 Reus  
Tarragona, Spain  
Sra. Victoria Alba  
Tel: +34-977-77-20-21  
Fax: +34-977-77-20-21  
Email: albapatch@albapatch.com

## SWITZERLAND

**Mode-Meter AG**  
PO Box 317  
Baselstrasse 22 B  
CH-4125  
Riehen/Basel  
Dieter Roesch  
Tel: +41-61-643-0560  
Mobile: +49-171-731-2958  
Fax: +41-61-643-0561  
Email: Mode-Meter@mode-meter.ch



**Cotton & Color**  
Inzlingerstrasse 279  
CH4125 Riehen  
Astrid Oberhauser  
Tel: +41-61-641-9770  
Email: info@cotton&color.com

**J. GASSER & CO. AG**  
Industriestrasse 4  
CH - 4658 Däniken  
Toni Peier  
Tel: +41 62 288 90 82  
Fax: +41 62 288 90 85  
Web: http://www.gasser-daeniken.ch

## TAIWAN

**Taiwan Cheer Champ Co., Ltd**  
11th Fl., Universal Center No. 175, Sec. 1  
Tatung Rd.,  
Hsi Chih, New Taipei City 221, Taiwan  
(R.O.C)  
Joyce Yen  
Tel: +886-2-26498555#372  
Fax: +886-2-26498897  
Email: joyce@cces.com.tw

**Wood & Cloth**  
93 Nantien St.  
Kaoshiung City, Taiwan  
R.O.C.  
Elaine Liu  
Tel: +886-7-3303718  
Fax: +886-7-5317916  
Email: woodandcloth@gmail.com

## UNITED KINGDOM & IRELAND

**Behrens Fabrics**  
Centrepoint  
Marshall Stevens Way  
Trafford Park  
Manchester  
M17 1PP  
Mr. Duncan Hough  
Tel: +44-161-872-1444  
Fax: +44-161-872-8002  
Mob: 07808 786 060  
Email: dhough@behrens.co.uk

