



The Home of Happy Stitching!



# 2022 Seasonal Collections



Enjoy brand new kits, designed and released in 2022, a fabulous addition to our current brochure!

# Winter Collection 2022

by Hannah Dale

Introducing our Wrendale greetings card range, designed by Hannah Dale.

Worked on our exclusive 16hpi brown speckle printed Aida.

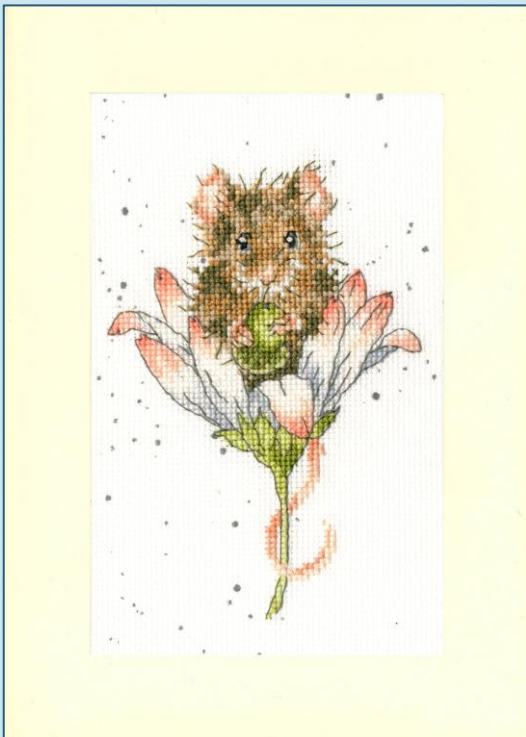
Supplied with a cream card and envelope, finished size 10x16cm.



**I'm Just Here For The Cake**  
ref XGC30



**Special Delivery**  
ref XGC31



**Wishes Just For You**  
ref XGC32



**Welcome Little Sausage**  
ref XGC33

Threads included for  
pink or blue!





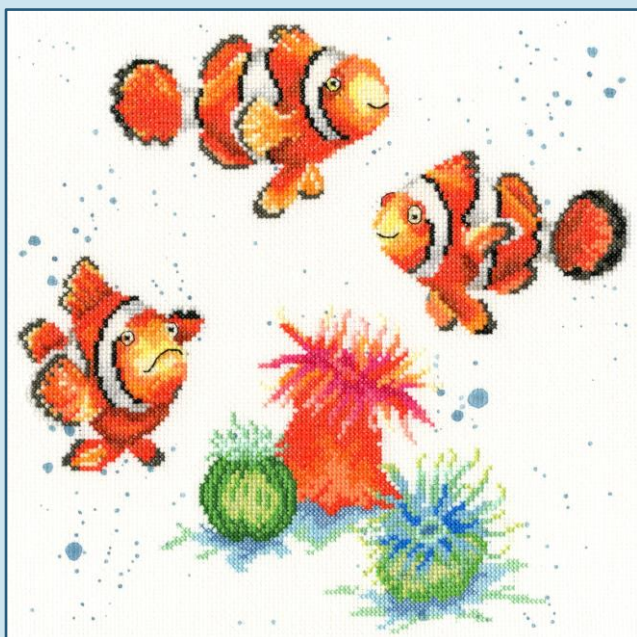
**Bear Hugs**  
 ref XHD95 26x29cm  
 brown speckle Aida



**Racing Stripes**  
 ref XHD96 26x26cm  
 brown speckle Aida



**Damsels And Dragons**  
 ref XHD97 26x26cm  
 blue speckle Aida



**Clowning Around**  
 ref XHD98 26x26cm  
 blue bubble Aida

XXXXX Counted Cross Stitch XXXXX

Introducing more bee-utiful designs  
from Eleanor Teasdale.

On 16hpi white Aida, finished size 12x12cm.

Better Together  
ref XETE4



Love Me, Love Me Not  
ref XETES



Send a special message to someone you love with an Eleanor Teasdale greetings card. On 16hpi antique white Aida, finished design size 9x13cm. Supplied with a cream oval card and envelope.

Bee-ing A Hero  
ref XGCC28



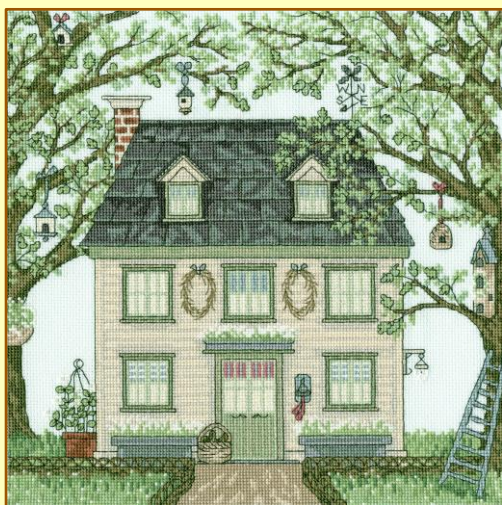
Meant To Bee  
ref XGCC29



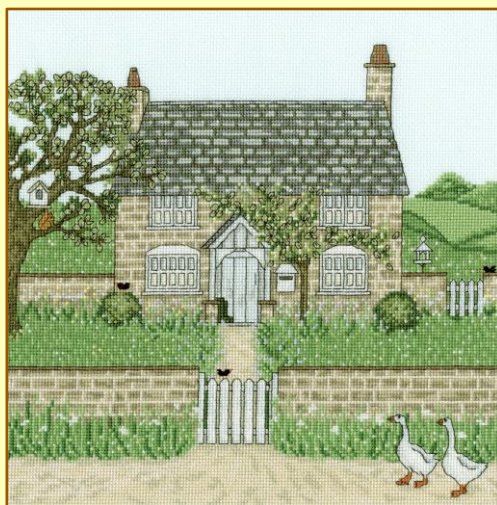
Two designs from our new Country Estate Collection.

Designed by Sally Swannell, supplied with 16hpi ice blue Aida, finished size 25x25cm.

Country House  
ref XSSI0

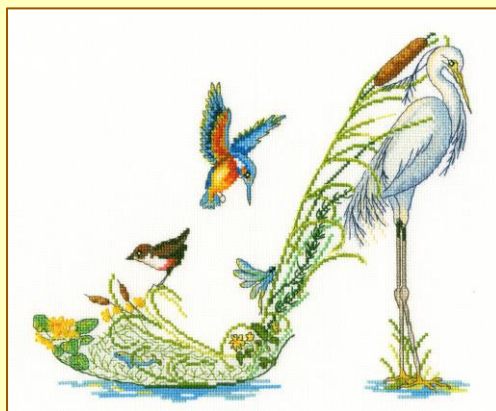


Gardener's Cottage  
ref XSSI1



XXXXX Counted Cross Stitch XXXXX  
Two stunning shoe designs from brand new artist Sally King.

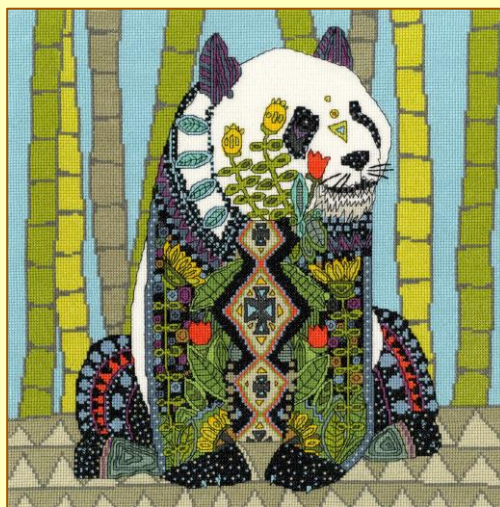
Proud As A Peacock  
ref XSK1 14hpi white 22x26cm



Along The Riverbank  
ref XSK2 16hpi white 27x22cm

Two wild designs to add to Sharon Turner's Jewelled Collection.  
Supplied with 14hpi white Aida, finished size 33x33cm.

Jewelled Tiger  
ref XSTU3

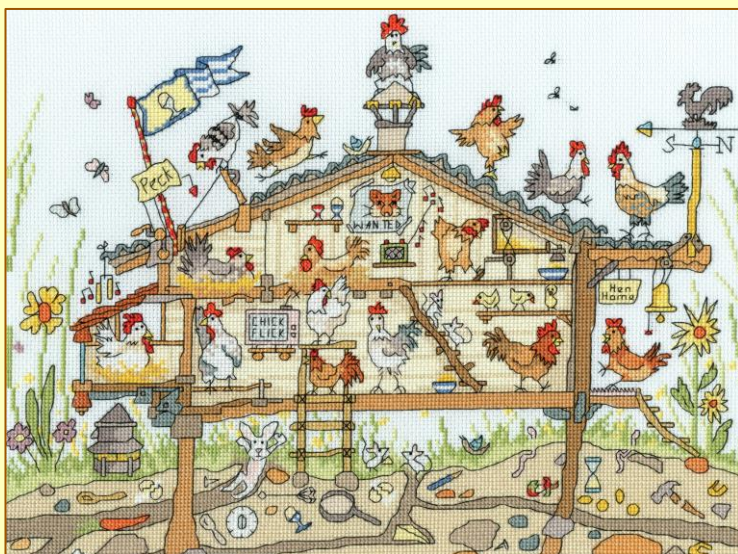


Jewelled Panda  
ref XSTU4

© Sharon Turner. Licensed by MGL, www.mglart.com

Head down to the farm with Amanda Loveseed's latest Cut Thru...

Cut Thru' Hen Home  
ref XCT37  
35x26cm  
14hpi ice blue Aida





XXXXX Counted Cross Stitch XXXXX

More of Margaret Sherry's furry friends!

Stitched on 14hpi white Aida.



Daisy Chain

ref XMS34 33x12cm

Garden Helpers  
ref XMS35 38x14cm



Welcome your new bundle of joy with Kate Garrett's nursery companions.

Stitched on 14hpi antique white Aida.

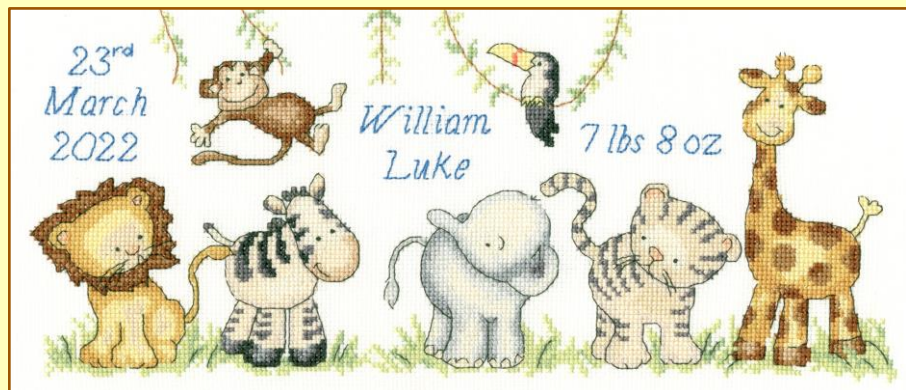


Woodland Welcome

ref XKG4 38x14.5cm

Threads included for coral or blue writing in both designs.

Jungle Welcome  
ref XKG5 36x15.5cm



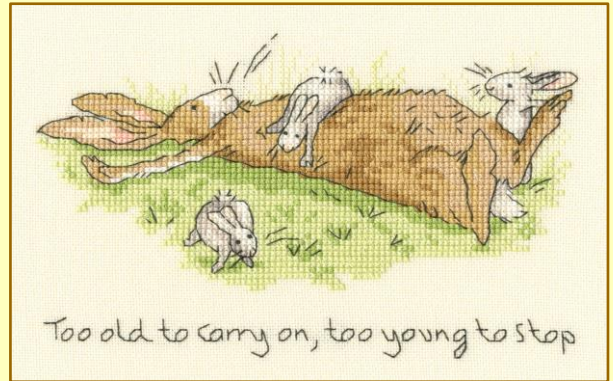
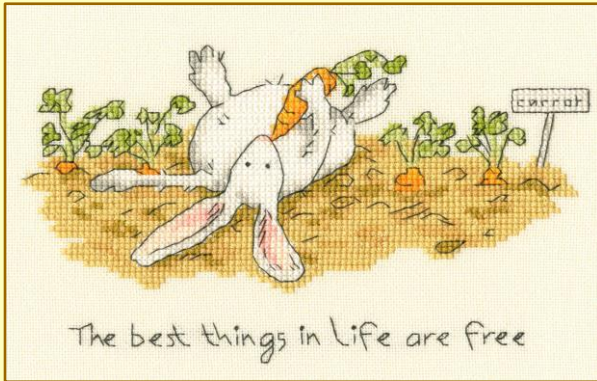


XXXXX Counted Cross Stitch XXXXX

Three more adorable designs by Anita Jeram.

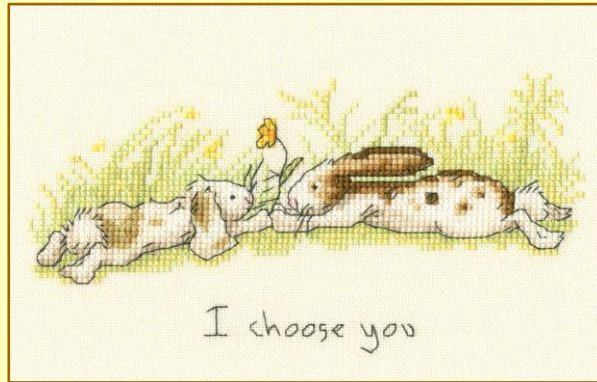
Supplied with 14hpi Aida, available on request with 27hpi evenweave. Finished size 19x12cm.

The best things  
ref XAU20



Too young to stop  
ref XAU21

I choose you  
ref XAU22

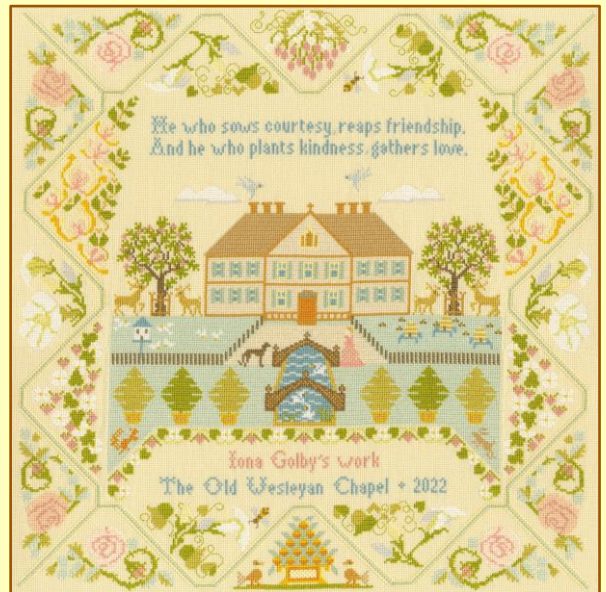


Classic designs from some of our ever popular artists...

Designed by Pete Smith,  
supplied on 14hpi white Aida.

Inspired by Moira Blackburn,  
supplied on 16hpi parchment Aida.

Women Who Changed The World  
ref XPS10 33x42cm



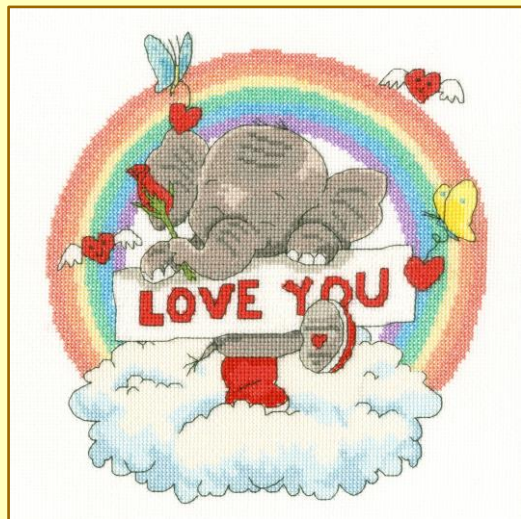
Bee Hive  
ref XS16 43x43cm

XXXXX Counted Cross Stitch XXXXX  
Two more colourful Elly designs from  
Simon Taylor-Kielty.

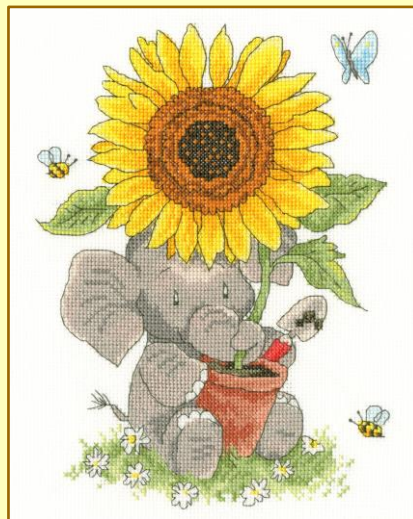


Stitched on 14hpi white Aida.

Tons Of Love  
ref XEL14 24x24cm



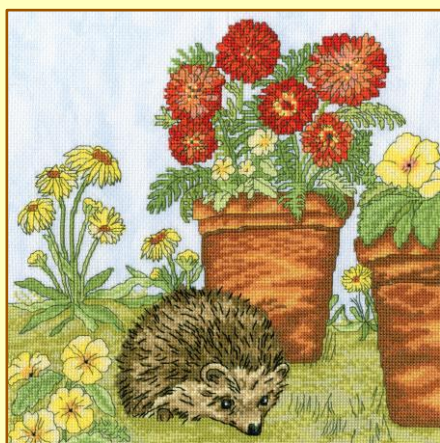
The Grey-t Outdoors  
ref XEL15 20x25cm



Expanding her Garden range, two more designs by Fay Martin.

Finished design size 26x26cm.

Potted Garden  
ref XFY5 14hpi vintage blue



Daisy Garden  
ref XFY6 14hpi ecru



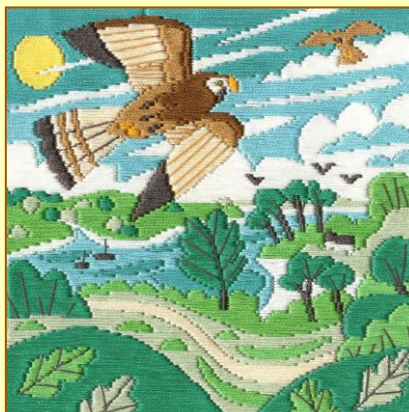
IIIII Silken Long Stitch IIIII

Long stitch designs by Matt Johnson on 22hpi Etamine canvas,  
finished size 16x16cm.

Stonechat  
ref SSMJ3



Kestrels  
ref SSMJ4







# IIII Woollen Long Stitch IIII

Mackintosh inspired long stitch designs by Rose Swalwell on 14hpi printed canvas, finished size 18x18cm.

Rose Arbour  
ref LSMK1



Rose Trellis  
ref LSMK2



# IIII Tapestry IIII

To complete Karen Tye Bentley's Seasonal Collection...

On 10hpi full colour printed canvas, finished size 36x36cm (14x14 inches).

Summer  
Bluebirds  
ref TKTB2



Autumn  
Starlings  
ref TKTB3



Finally, two beautiful country kitchen designs by Catherine Rowe.

On 12hpi full colour printed canvas, finished size 36x36cm (14x14 inches).

Honeysuckle  
Hen  
ref TAP8



Old Spot  
ref TAP9





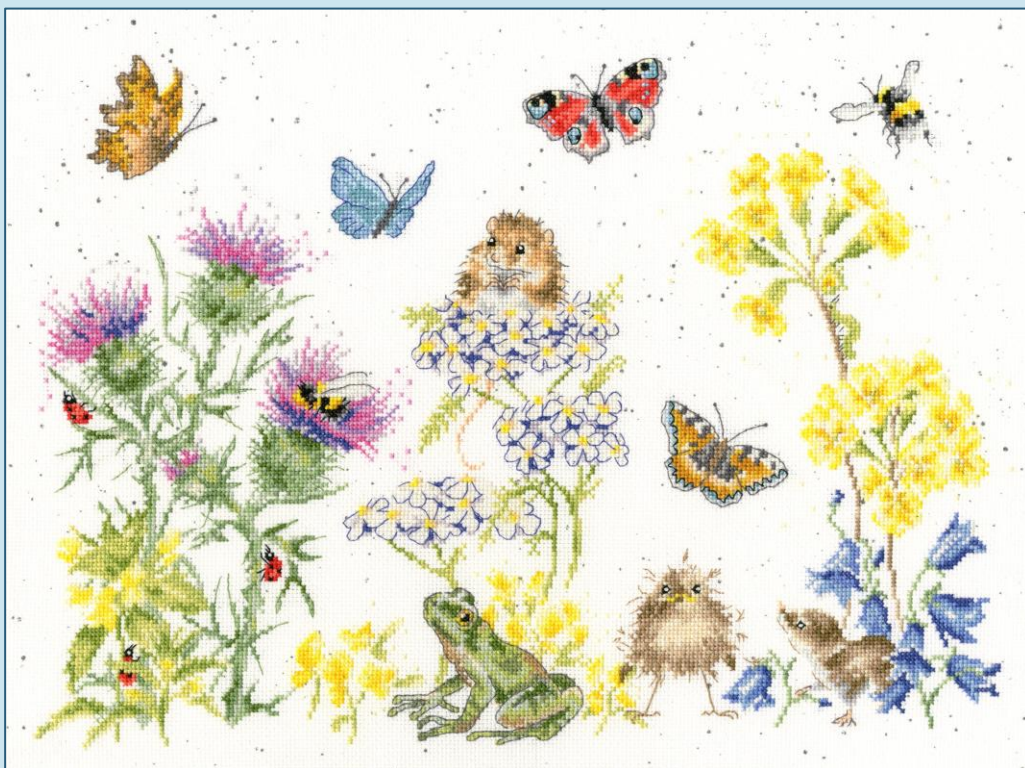
XXXXX Counted Cross Stitch XXXXX

Wrendale  
DESIGNS  
by Hannah Dale

# Spring Collection 2022

Introducing our 100<sup>th</sup> Wrendale kit, in support of St Barnabas Hospice.

Worked on our exclusive 16hpi brown speckle printed Aida, a 5% donation of trade and retail sales from Bothy Threads Ltd will be donated to St Barnabas, Hannah's local hospice.



Wildflower Memories  
ref XHD100 39x29cm



St Barnabas

////// Tapestry ////

Two of our favourite Wrendale designs now available in tapestry.

On 10hpi full colour printed canvas, finished size 28.5x38.5cm.



He's A Fun-gi  
ref THD74



The Busy Bee  
ref THD75



XXXXX Counted Cross Stitch XXXXX



Three more brand new designs by Hannah Dale including our first Wrendale birth sampler!

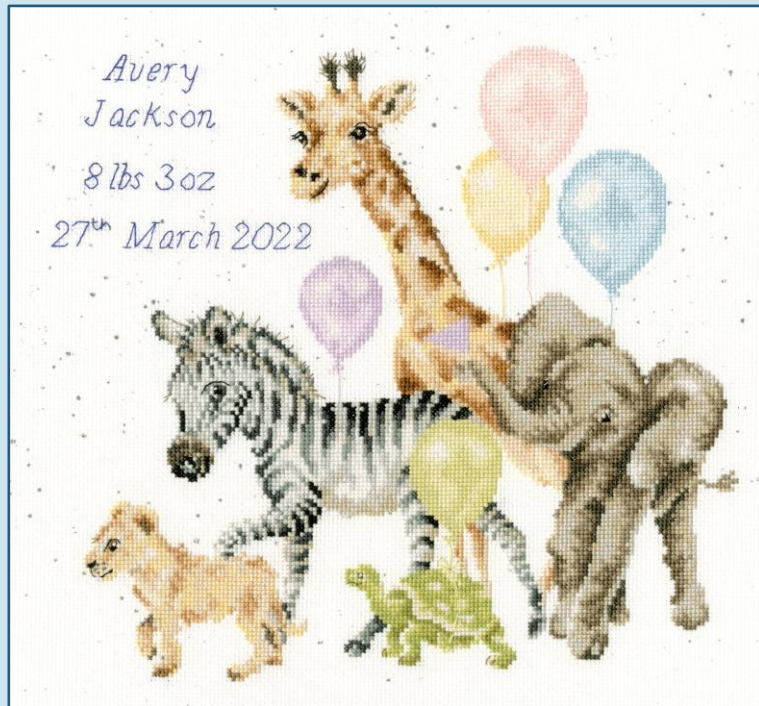
All worked on our exclusive brown speckle printed Aida.



**Blooming With Love**  
ref XHD99 26x26cm 16hpi



**The Fairy Ring**  
ref XHD101 26x26cm 14hpi



**Welcome To The World**  
ref XHD102 28x26cm 16hpi



XXXXX Counted Cross Stitch XXXXX

Following her debut success, we are delighted to bring out two more shoe designs from Sally King.



Walk Home

ref XSK3 27x25cm 16hpi white



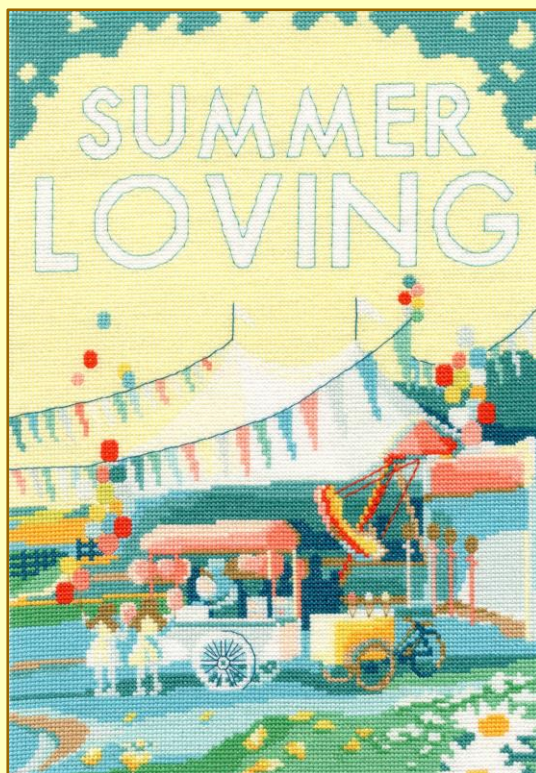
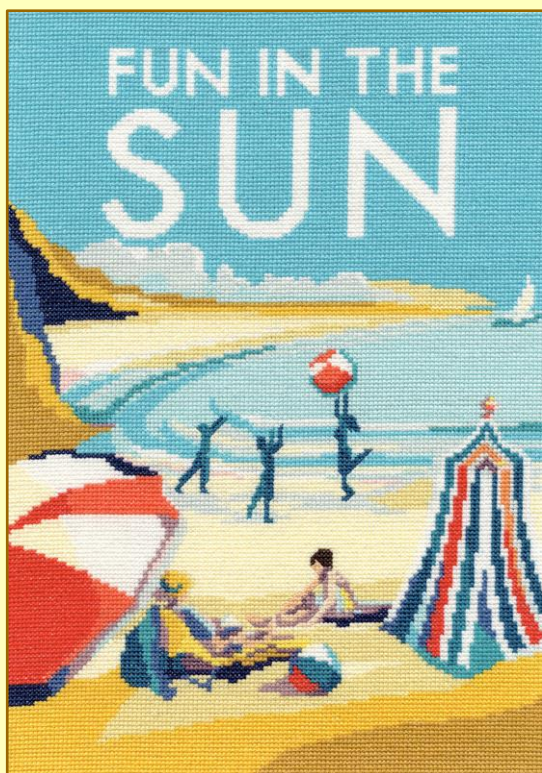
Lazy Sundae

ref XSK4 22x28cm 14hpi white

We're looking forward to summer with these two retro designs by artist Becky Bettsworth.

Both worked on 14hpi white Aida, finished size 23x33cm.

Vintage Seaside  
ref XBET5



Vintage Carnival  
ref XBET6



XXXXX Counted Cross Stitch XXXXX

Presenting brand new artist Rachel Froud and 'The Menagerie' range.

Both worked on our specially designed 14hpi printed Aida.



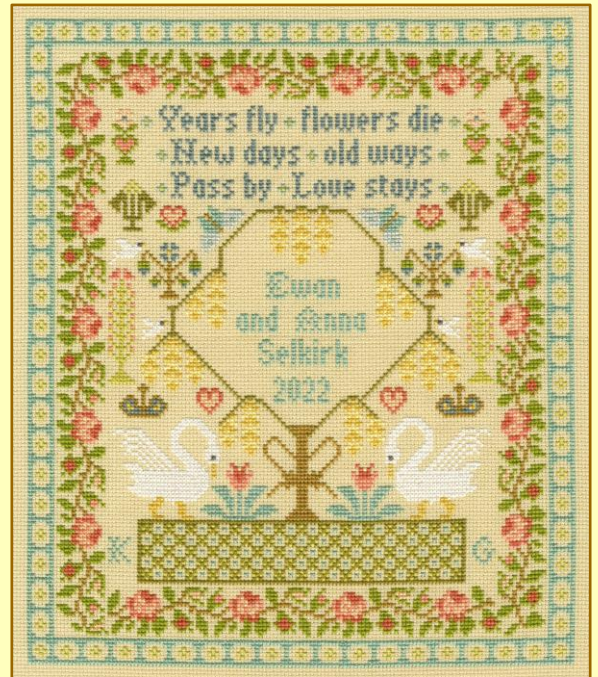
**Paradise**  
ref XRF1 26x26cm



**Illusion**  
ref XRF2 26x26cm

Why not stitch a family heirloom with this birth sampler from Kate Garrett or wedding sampler from Moira Blackburn?

Twinkle, Twinkle, Little Star...  
ref XKG6 28x38cm 14hpi white



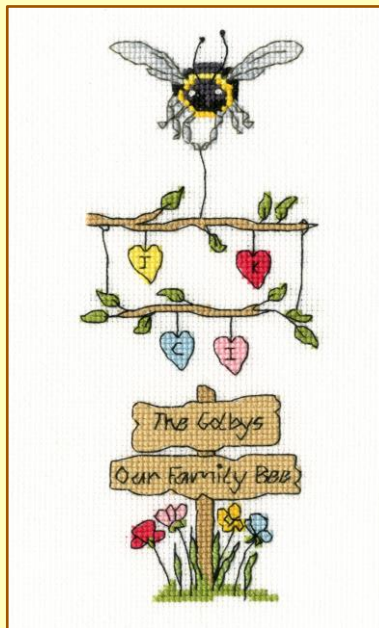
**The Laburnum Tree**  
ref XS17 24x28cm 16hpi Parchment



XXXXX Counted Cross Stitch XXXXX  
 Introducing more fun family designs from  
 Eleanor Teasdale.



**Sweet Friendships**  
 ref XETE6 24x21cm 14hpi white



**Our Family Bee**  
 ref XETE7 10x18cm 16hpi white  
 This design can be extended to a maximum of four hearts per branch

Two bee-utiful new Greetings cards from Eleanor Teasdale. Worked on 16hpi antique white Aida and supplied with a cream oval card and envelope.



**Bee-ing Thankful**  
 ref XGC34 13x9cm



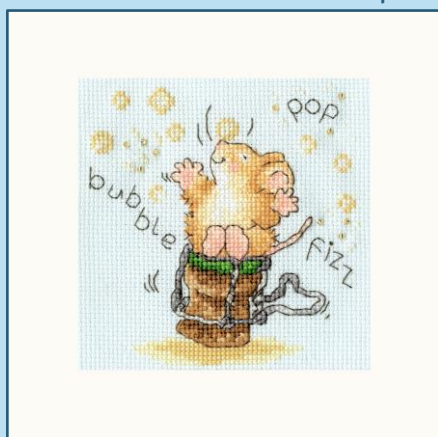
**Could Not Bee Proud**  
 ref XGC35 9x13cm

**Celebrate your special occasions with Margaret Sherry's furry friends...**

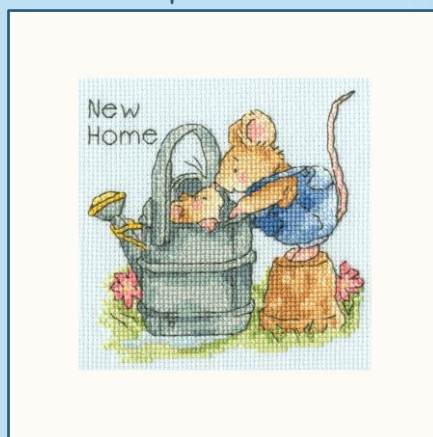
On 16hpi ice blue Aida, finished size 10x10cm. Supplied with a cream square card and envelope.



**Time To Celebrate!**  
 ref XGC36



F13



**Welcome Home**  
 ref XGC37

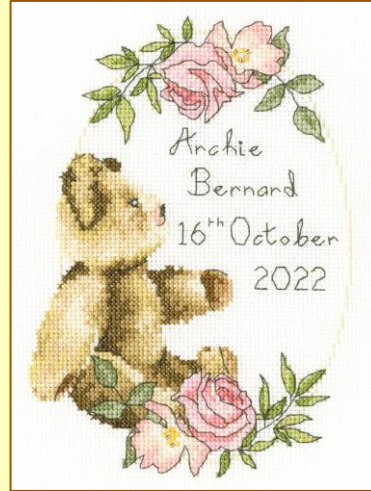


XXXXX Counted Cross Stitch XXXXX  
 Two vintage style birth samplers by  
 Sarah Summers, perfect for the nursery.

Both worked on 14hpi antique white Aida, finished size 15x20cm.



Victorian  
 Rocking Horse  
 ref XSS12

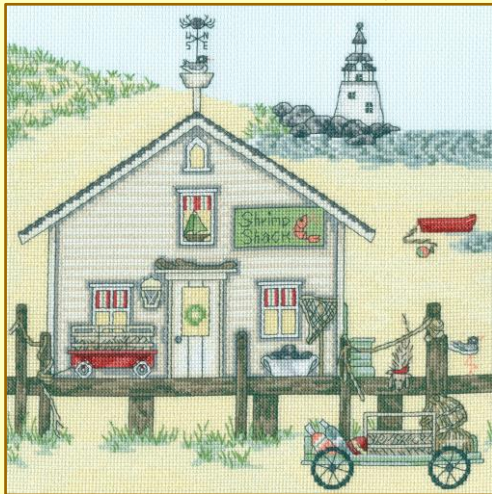


Victorian  
 Teddy Bear  
 ref XSS13

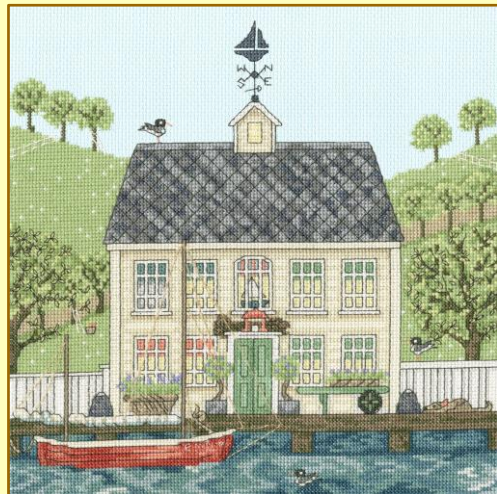
We are extending our New England range with these two  
 lovely designs by Sally Swannell.

Both worked on 14hpi ice blue Aida, finished size 26x26cm.

Shrimp Shack  
 ref XSS14



The Captain's House  
 ref XSS15



IIIII Silken Long Stitch IIIII

Long stitch designs by new artist Kate Heiss on 22hpi printed Etamine canvas.

Butterfly  
 Meadow  
 ref SSKH1  
 19x18.5cm



Cottage  
 Garden  
 ref SSKH2  
 19x18.5cm





# IIII Woollen Long Stitch IIII

## Floral long stitch designs by Rose Swalwell

on 14hpi printed canvas, finished size 20.5x21.5cm.

Anemones  
ref LSAN



Water Lilies  
ref LSWL



## IIII Tapestry IIII

We have two new designs inspired by Walter Crane's early wallpaper prints.

On 12hpi full colour printed canvas, finished size 36x36cm (14x14 inches).

Swan, Rush  
And Iris  
ref TAC18



Cockatoo And  
Pomegranate  
ref TAC19



Finally, two beautiful designs from William Morris.

Rose  
ref TAC20



Wilhelmina  
ref TAC21





# Summer Collection 2022



Introducing the Briarwood Lane series, a collection of beautiful designs from Simon Taylor-Kielty, following the adventures of the Briar Family.



ref XBR1 34x29cm 14hpi white

Let's Fly A Kite



ref XBR2 34x29cm 14hpi white

Ahoj There!

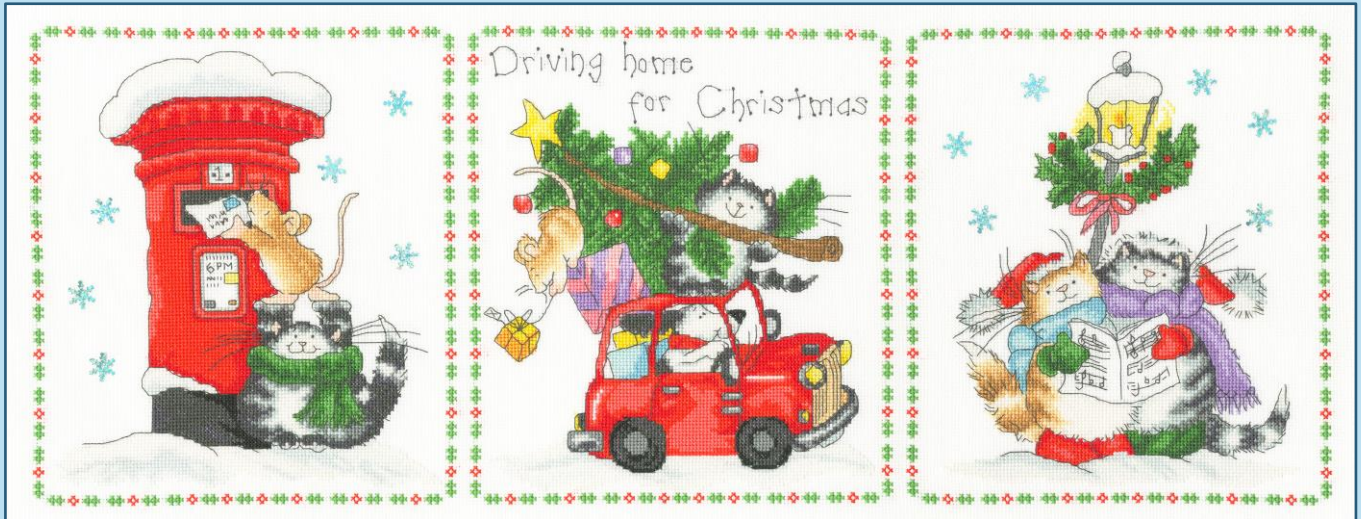
Celebrate Christmas with Margaret Sherry's  
furry friends...



Worked on 16hpi white Aida, finished design size 60x23cm.



'Twas The Night Before  
Christmas  
ref XMS36



Driving Home For Christmas  
ref XMS37

Did someone mention Christmas?

Introducing four new Christmas card designs by Hannah Dale.

Worked on our exclusive 16hpi brown speckle printed Aida.

Supplied with a cream card and envelope, finished size 10x16cm.



Winter Wonderland  
ref XMAS55



'Tis The Season  
ref XMAS56



Cosy Christmas  
ref XMAS57



Twist And Sprout  
ref XMAS58



XXXXX Counted Cross Stitch XXXXX  
Four festive Christmas cards by Dale Simpson.  
How will you deliver yours this year?

Worked on 16hpi winter blue Aida. Supplied with a cream card and envelope,  
finished size 10x10cm.

Delivery By Bike  
ref XMAS51



Delivery By Sledge  
ref XMAS52



Delivery By Balloon  
ref XMAS53



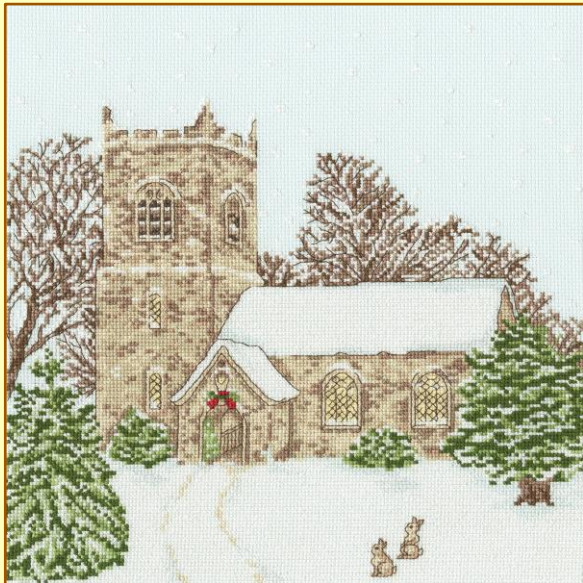
Delivery By Skis  
ref XMAS54



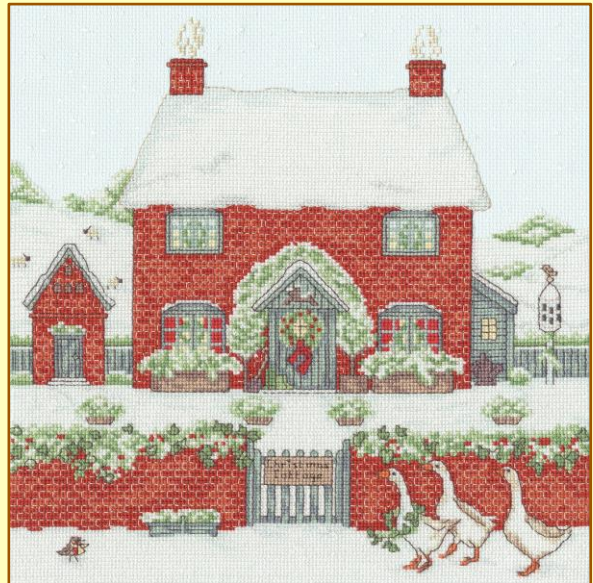
Two winter wonderland designs from our Country Estate Collection.

Designed by Sally Swannell, worked on 16hpi ice blue Aida  
with a finished size of 26x26cm.

Country Church  
ref XSS16

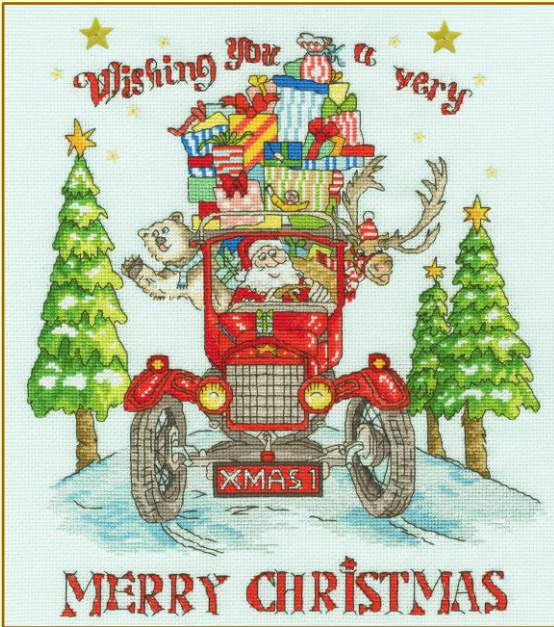


Christmas Cottage  
ref XSS17



'Tis the season to be jolly...and stitch one of  
Amanda Loveseed's new Christmas designs.

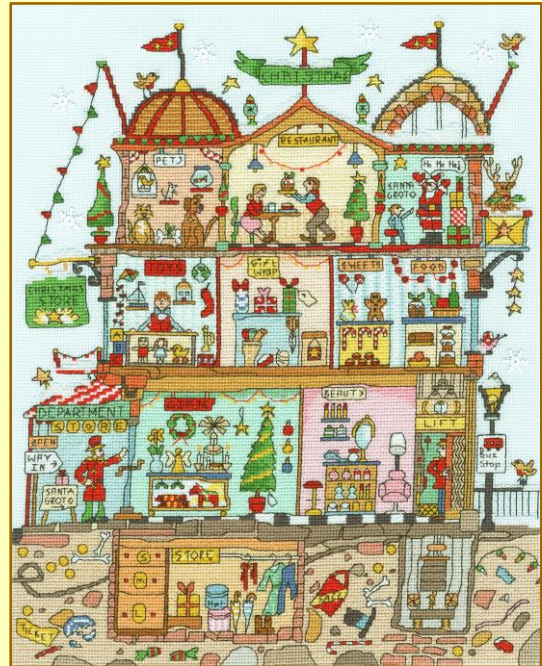
Both stitched on 16hpi ice blue Aida.



**The Xmas Express**

ref XAL8 Finished size 25x28cm

With the option to stitch either Merry Christmas  
or Happy Holidays!



**Cut Thru' Christmas**

**Department Store**

ref XCT38 Finished size 26x34cm

A wonderful tower of  
festive fun by artist  
Karen Tye Bentley...



**It's Christmas!**

ref XKTB7 46x36cm 16hpi blue



XXXXX Counted Cross Stitch XXXXX

Wrendale  
DESIGNS

Five new additions to the ever popular  
Wrendale Designs collection by Hannah Dale

by Hannah Dale

All worked on our exclusive 14hpi brown speckle printed Aida.



Little Whispers  
ref XHD103 26x26cm



Growing Old Together  
ref XHD104 26x26cm



The Witch's Cat  
ref XHD105 26x26cm



The Best Treat Of All  
ref XHD106 33x29cm



Oh Christmas Tree  
ref XHD107 38x29cm

Two more adorable designs by Anita Jeram.

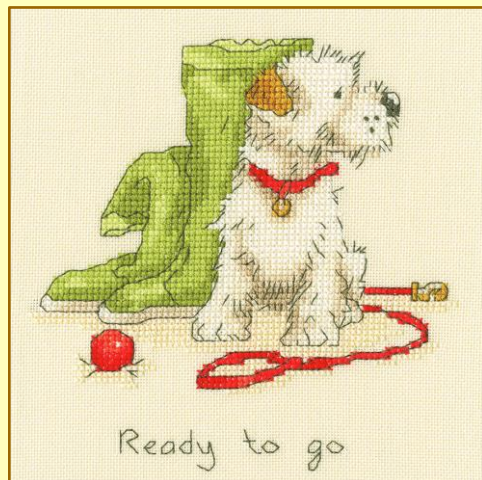
Worked on 14hpi cream Aida, available on request with 27hpi evenweave.



Comfort zone

**Comfort zone**

ref XAJ23 Finished size 18x12cm



Ready to go

**Ready to go**

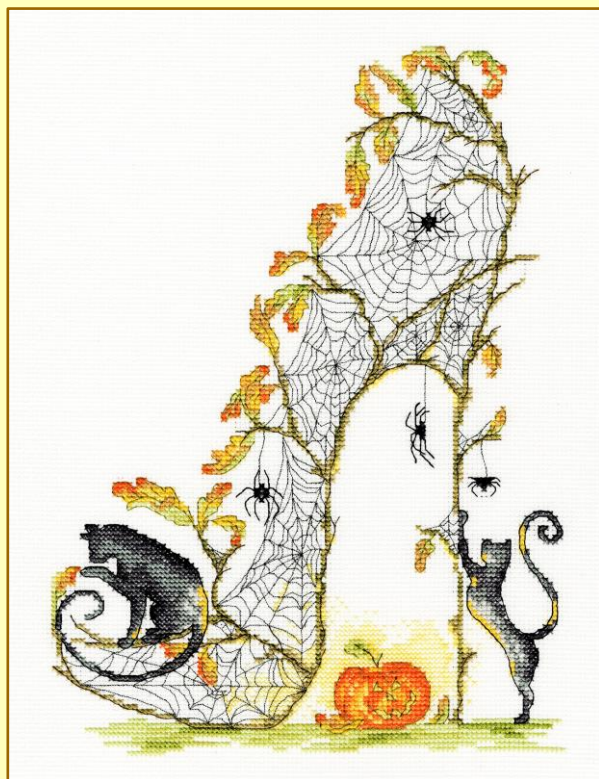
ref XAJ24 Finished size 15x15cm

Our splendid Shoe Art Collection gains two more additions  
by Sally King!



**Holiday**

ref XSK5 28x24cm 16hpi white



**Gossamer Slipper**

ref XSK6 21x28cm 14hpi white





XXXXX Counted Cross Stitch XXXXX

Classic designs from some of our popular returning artists...

Designed by Pete Smith,  
worked on 14hpi white Aida.



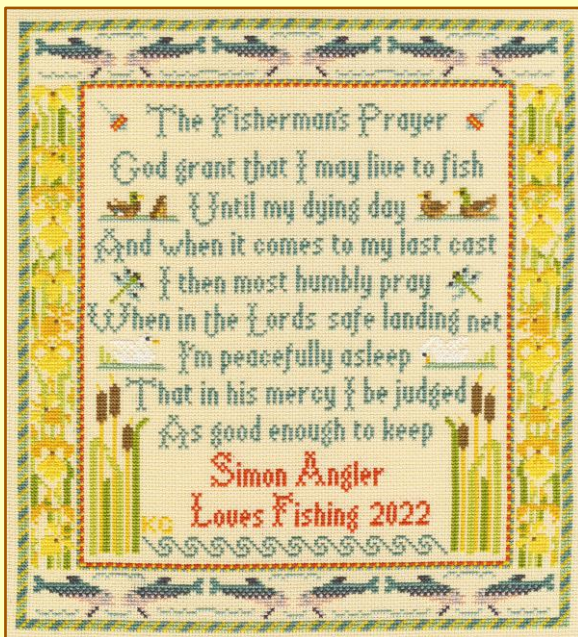
A Ride Through Time  
ref XPS11 27x39cm

Designed by Vesna Skornšek,  
worked on 14hpi blue Aida.



Under The Sea  
ref XVS3 26x36cm

Two new traditional samplers by Moira Blackburn,  
worked on 16hpi parchment Aida.



The Fisherman's Prayer  
ref XS18 27x30cm



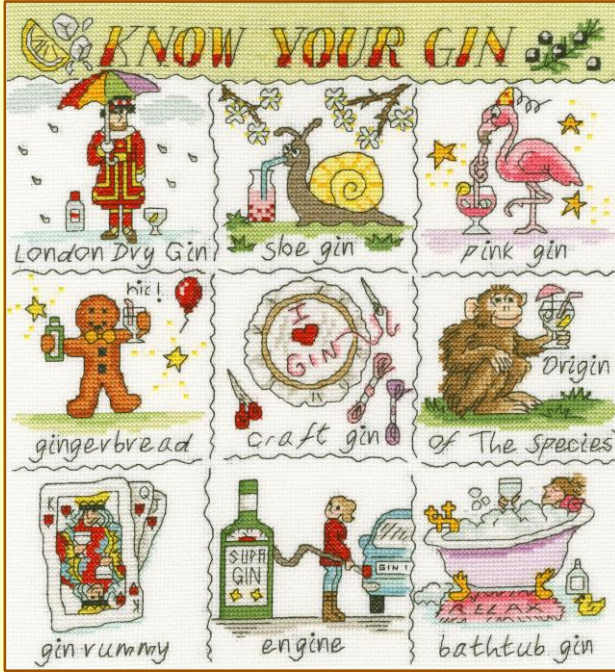
The Farmer's Prayer  
ref XS19 27x30cm



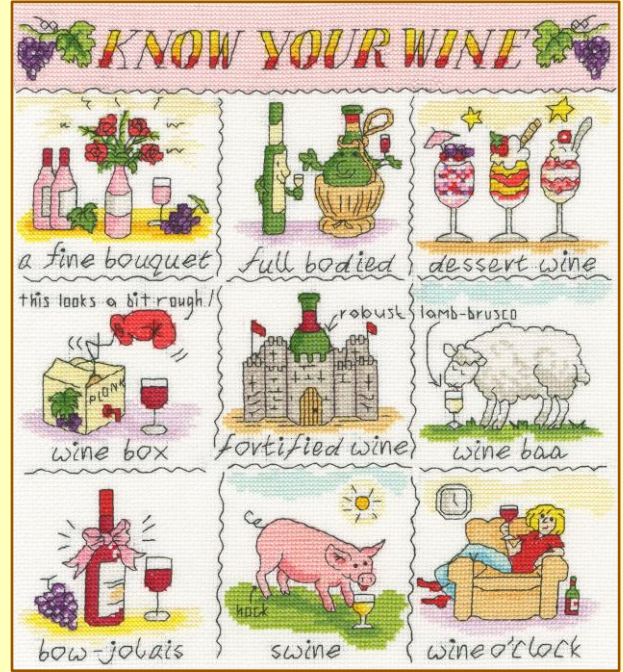
# XXXXX Counted Cross Stitch XXXXX

Two long awaited new designs from returning artist Helen Smith. It's 5 o'clock somewhere...

worked on 14hpi white Aida, finished size 26x28cm.



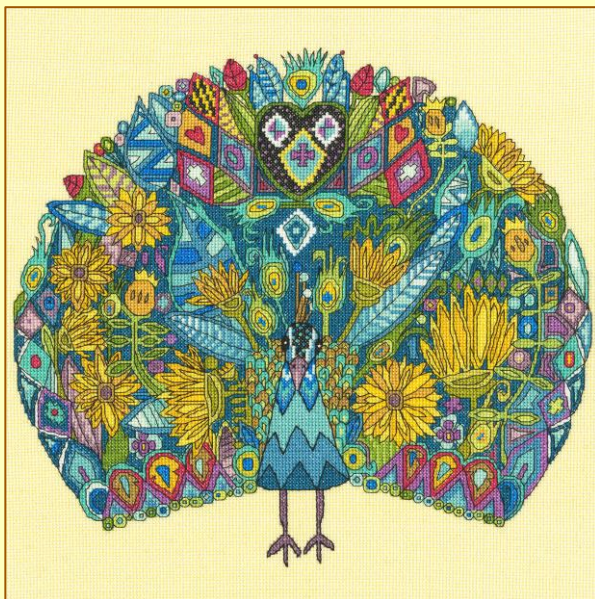
**Know Your Gin**  
ref XHS10



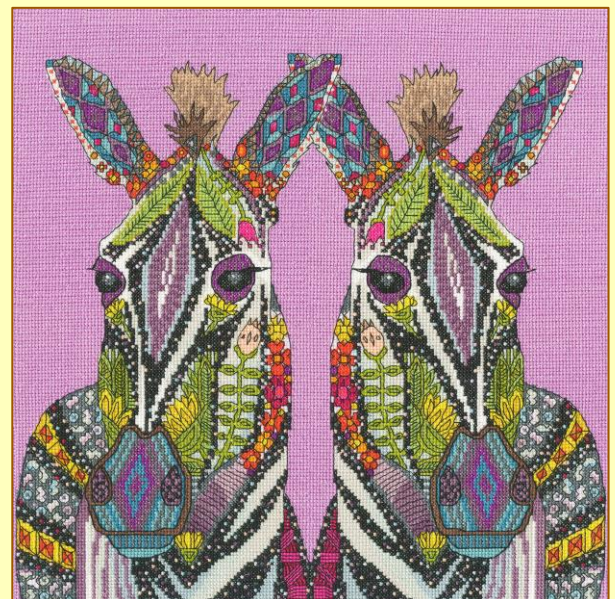
**Know Your Wine**  
ref XHS11

Take a walk on the wild side with two new designs to add to Sharon Turner's Jewelled Collection.

Worked with 14hpi white Aida, finished size 33x33cm.



**Jewelled Peacock**  
ref XSTU5



**Jewelled Zebras**  
ref XSTU6

IIII Woollen Long Stitch IIII  
 Introducing Becky Bettsworth's retro  
 inspired artwork in long stitch.

On 14hpi printed canvas, finished size 19x27cm.

English Riviera  
 ref LSBE1



Fishermen's Rest  
 ref LSBE2



IIII Tapestry IIII

We have two new wildlife designs by Catherine Rowe.

On 12hpi full colour printed canvas, finished size 36x36cm (14x14 inches).



English Roses  
 ref TAP10



Prickly Pair  
 ref TAP11



# Embroidery

## Introducing our first embroidery collection!

Based on artwork by Kathy Pilcher, these stunning creative embroidery kits are worked on colour printed calico. Finished size 20cm round.

## The Folk Art Range



Folk Bees  
Ref EKP1



Folk Hare  
ref EKP2



Folk Robin  
ref EKP3

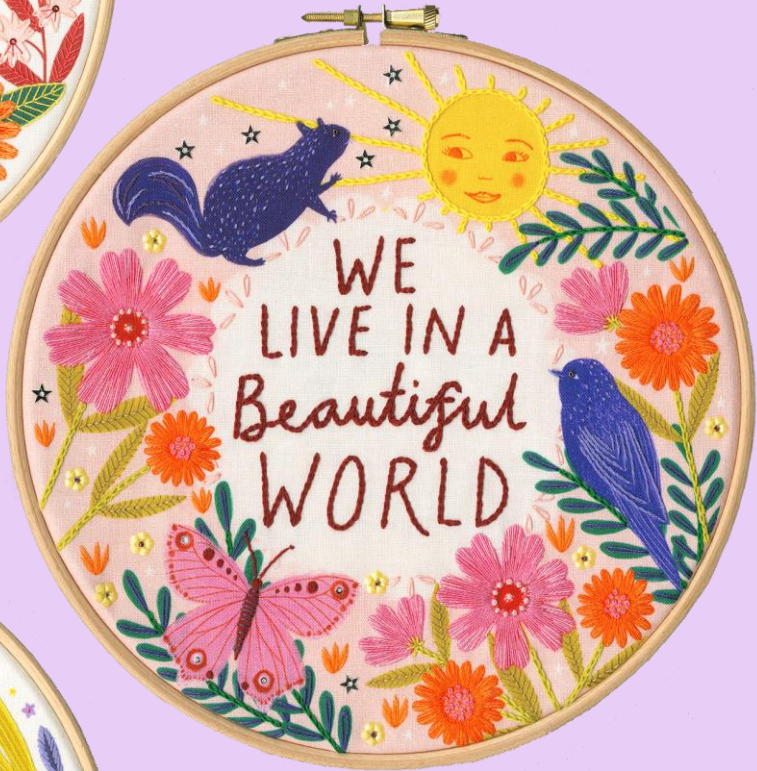
With artwork from Lee Foster-Wilson, these bright and colourful designs are worked on colour printed calico. Each one is designed to fit within an 8 inch hoop, which is included in the kit.

# The Sew Happy Range

Sing  
Ref ELFW1



Beautiful World  
ref ELFW2



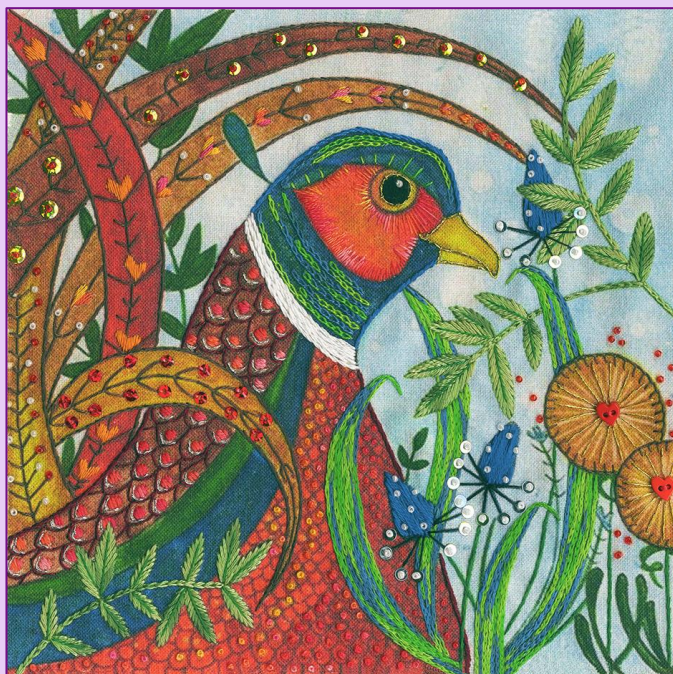
Look Up  
ref ELFW3



Based on artwork by Linda Hoskin, these fabulous feathered friends are worked on full colour printed calico. Finished size 16x16cm.

# The Flights Of Fancy Range

Blackbird  
Ref ELH1



Pheasant  
ref ELH2

Partridge  
ref ELH3





XXXXX Counted Cross Stitch XXXXX

# Commemorative Collection 2022

## In memory of Her Majesty Queen Elizabeth II

Designed by artist Eleanor Teasdale  
and worked 14hpi white Aida,  
finished size 15cm by 15cm.

All profits from the sale of these  
kits will be donated to The Prince's  
Trust (Registered Charity Number  
1079675).

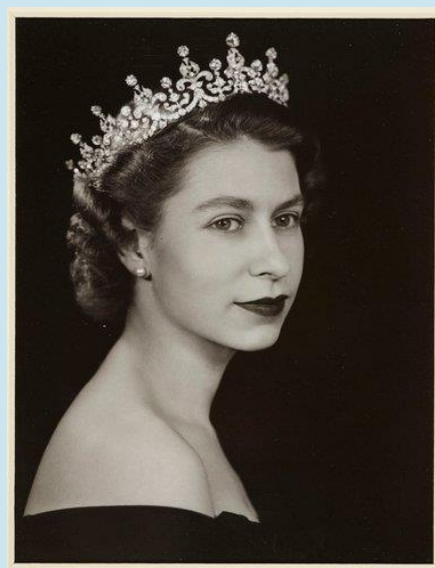
These two designs are exclusive to  
Bothy Threads and are not  
available to trade customers.



Thank you Ma'am  
ref XHM1



Together Again  
ref XHM2



1926-2022



And welcoming brand new artist,  
Jade Mosinski, with a bee-utiful new tapestry.



### Botanical Bee

ref TAP12 On 10hpi full colour printed canvas,  
finished size 36x36cm (14x14 inches).