



fabrics

IMAGINE & CREATE



Summer 2018

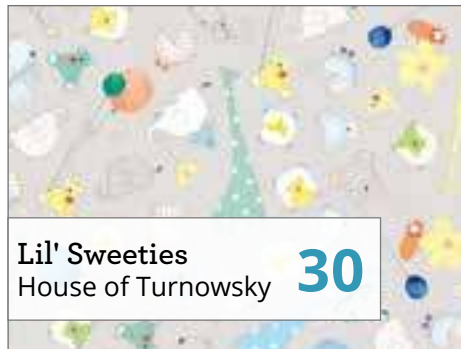


TABLE OF CONTENTS



Moose On The Loose
Tickles **36**



Nature's Bears
Mark Keathley/JQ Licensing **38**



Northwoods Neighbors
Desiree's Designs **40**



Popcorn & Peanuts
Peanuts **42**



Reading Together
Santoro Poppi Loves **44**



Scenic Route
Alicia Jacobs Dujets **46**



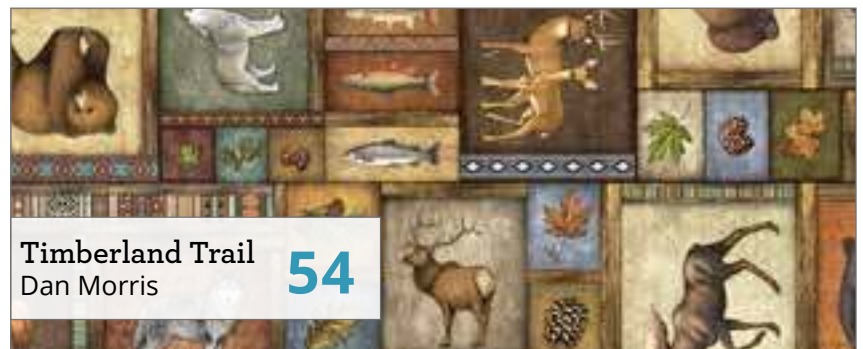
Sew & Go
QT Fabrics **48**



Sew Sassy
Joey Heiberg **50**



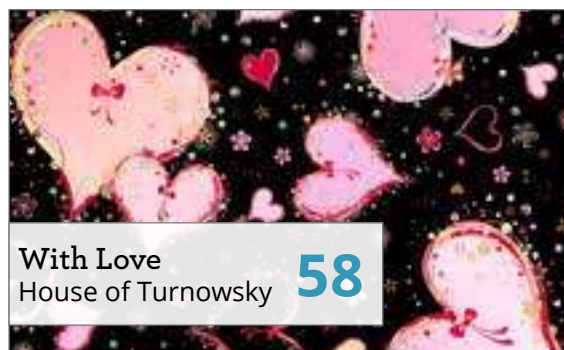
Sugar Rush
Ink & Arrow **52**



Timberland Trail
Dan Morris **54**



Wild Side
House of Turnowsky **56**



With Love
House of Turnowsky **58**



Work In Progress
Tickles **60**

Projects **62-70**

BASICS

- Avalon 108" **72**
- Color Blends **74**
- Color Blends II **76**
- Harmony **78**
- Illusions **84**
- Luminous Lace **86**
- Lyla Damask **90**
- Metals **92**
- Holiday Metals **93**
- Ombre Scroll **94**
- Ombre Stitches **96**
- Pixie Dots **98**
- Scrollscapes **100**
- Scrollscapes II **101**
- Sorbets **102**
- Sorbet Essentials **104**
- Temptations **106**

USA Regional Sales Managers **108**

International Distributors **109**



Our Customer Service Department is available
Monday - Friday: 8:30 AM - 5:00 PM EST
Tel: 800-876-2756
Fax: 800-540-7063 • 401-275-9328

QTfabrics.com

View collections online and browse tools that support you, the shop owner.
 Shop when YOU want!

Log on now to request an account

QT Fabrics Studio



Artworks X, Danielle, Delia, Echo, Juliette, Sew & Go, Sugar Rush
Pages 8, 10, 14, 18, 26, 42, 48, 52

QT Fabrics lines are created in-house by our talented design team in New York. Led by Design Director Janet Andersen, our studio develops fabric prints reflecting the latest trends in color and design.

Rosanne Abbenda, Alicia Jacobs Dujets, Cindy Sepp, and Monica Zhu work together to bring fabrics styled for dynamic projects with a modern flair.

Joey Heiberg



Sew Sassy
Page 50

Self-taught artist Joey Heiberg is the queen of her own universe (mostly because the title of Queen of England was taken). Her happy place is in her studio, where she creates artwork while talking to the dog. She has AADD (Artist Attention Deficit Disorder). In other words, she gets bored easily and loves to develop with new designs on a daily basis.

Her goal is to inspire other women to go after their dreams while still being able to afford a fabulous pair of shoes.

Our QT Fabrics team extends beyond our employee-owners. We work with creative and dedicated artists to expand our in-house studio talent. We are committed to providing an array of collections suited to many different styles. Collaboration is the QT Fabrics way!

Alicia Jacobs Dujets



Scenic Route
Page 46

Alicia Jacobs Dujets is an illustrator and designer based out of northern New Jersey. She earned her MFA in Illustration as Visual Essay at the School of Visual Arts and her BFA at the Maryland Institute College of Art. She is honored to have work include in American Illustration, TED Books, and SMITH Magazine.

Desiree Habicht



Northwoods Neighbors
Pages 40

Desiree is a multi-talented artist whose works range from museum quality fine art paintings, national and international award winning fiber art quilts, murals and faux finishes for the interior design industry and designs for commercial licensing. Desiree loves to use the bright, bold colors of nature and is best known for her whimsical imagery.

Christine Graf



Jamboree
Page 24

Christine has been a commercial artist in the field of fabric and paper design for the past thirty years. She has exhibited in galleries and museums in New York City and around the world. Her specialty is collage and sculpture. She loves to work with the fabric and paper designs which she has created with watercolor and cut, arrange and recreate a new piece of work from its original inception.

Amanda Haley



Dogtown
Page 16

Amanda Haley, a freelance illustrator for more than 20 years, designed greeting cards for Hallmark Cards, American Greetings, and other firms. She also illustrated numerous picture books as well as educational and chapter books.

Haley graduated from The School of the Art Institute of Chicago with a BFA in painting and drawing.

Hautman Brothers



Deer Valley
Page 12

The Hautman Brothers have established themselves among America's foremost wildlife artists. All three brothers have received numerous honors and awards, and have dominated many state and national duck stamp competitions. At last count, the three brothers have seen their art featured on over 50 state and federal stamps. James, Robert and Joe are the only brothers ever to win the coveted Federal Duck Stamp Contest.

House of Turnowsky



Let's Celebrate!, Lil' Sweeties, Wild Side, With Love
Pages 28, 30, 56, 58

Based in Tel Aviv since 1940, Turnowsky is a global brand well-known for its luxury paper products, unique designs and original gifts including greetings cards, postcards, calendars and stationery. These are designed in our own studios and sold exclusively through selected distributors all over the world.

Mark Keathley



Nature's Bears
Page 38

Mark Keathley has been "chasing the light" since he was 10 years old on a farm in East Texas. "Growing up in the country gave me a love for the outdoors and an appreciation for the moment." Vividly recalling a covey of quail bursting to flight in the Piney woods hunting as a teen, or the mist rising off the pond while fishing in the early morning, Mark has been enamored with mood, light, drama, and color.

Dan Morris



Faith, Fine Tuning, Lost World, Timberland Trail
Pages 20, 22, 34, 54

Since 1994 Dan Morris has been creating innovative, original art for a broad array of industries. From T-shirts for the Grateful Dead, 1960's inspired peace stickers, and celestial calendars, to more traditional home and gift markets, Dan has a wide range of eclectic artwork spanning almost every artistic theme.

Santoro Poppi Loves



Reading Together
Page 44

Introducing the remarkable new collection from Santoro: Poppi Loves Pairing its sweet charm and unique imaginative design with Santoro's rich experience in original, illustration-based collection, Poppi Loves has found the perfect house.

Poppi Loves is a little girl with big dreams and a fierce curiosity. She invites her readers to join her and her woodland family as they journey through the wild woods and beyond.

Nidhi Wadhwa



Moose On The Loose, Work In Progress
Pages 36, 60

Most days you may find me in my studio creating pieces that make my little heart sing. This is just a sweet place where I can write and share my everyday with others and maybe create a few smiles along the way!

EMPLOYEE OWNERS

PRESIDENT



Ken Gamache

CUSTOMER SERVICE



Donna Silva



Luis Torres



Debra Voelker

DESIGN STUDIO



Janet Andersen



Rosanne Abbenda



Alicia Jacobs Dujets



Cindy Sepp



Monika Zhu

SUPPLY CHAIN



Thomas J. Kemble



John Ferreira



John Fraioli



Tiffany Jawor-Smith



Sandy DiFranco



Brian Millar



Deb Finan

MARKETING

REGIONAL SALES MANAGERS



Jayne Clark



Debra Coffman



Kevin Driscoll



Mark Economy



Mike Flynn



Ann Haley



Martha Manning-Jurey



Coby McComas



Jesus Montero



Kay Peterson



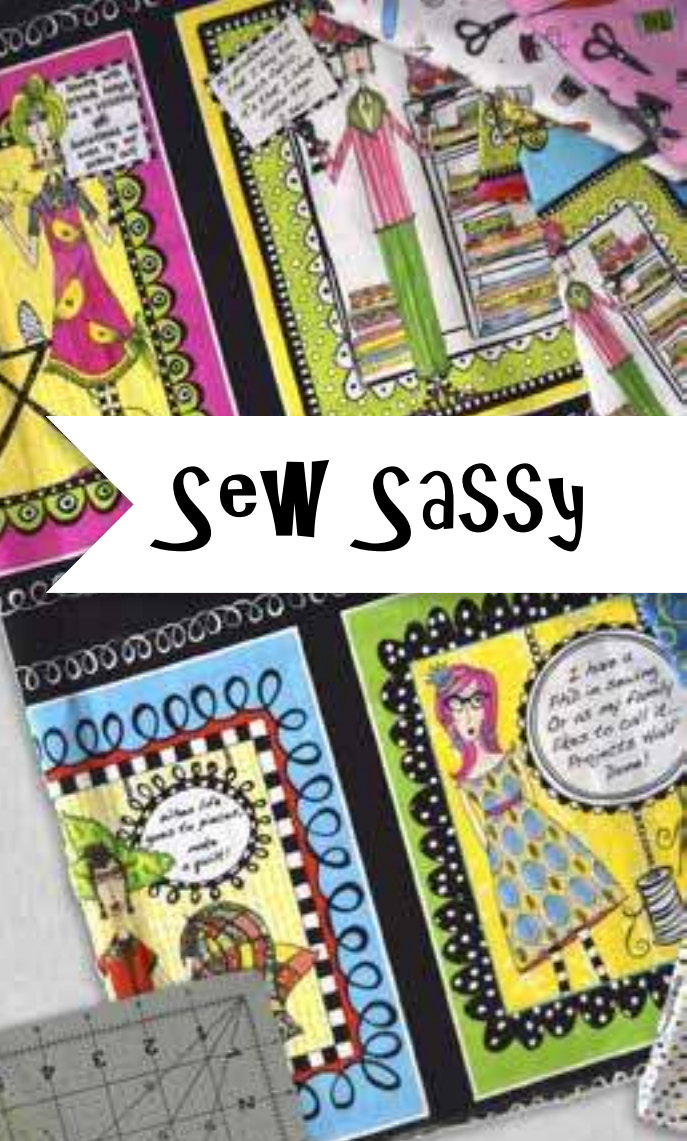
Tammie Randle



Barbara Wing



Sew Sassy

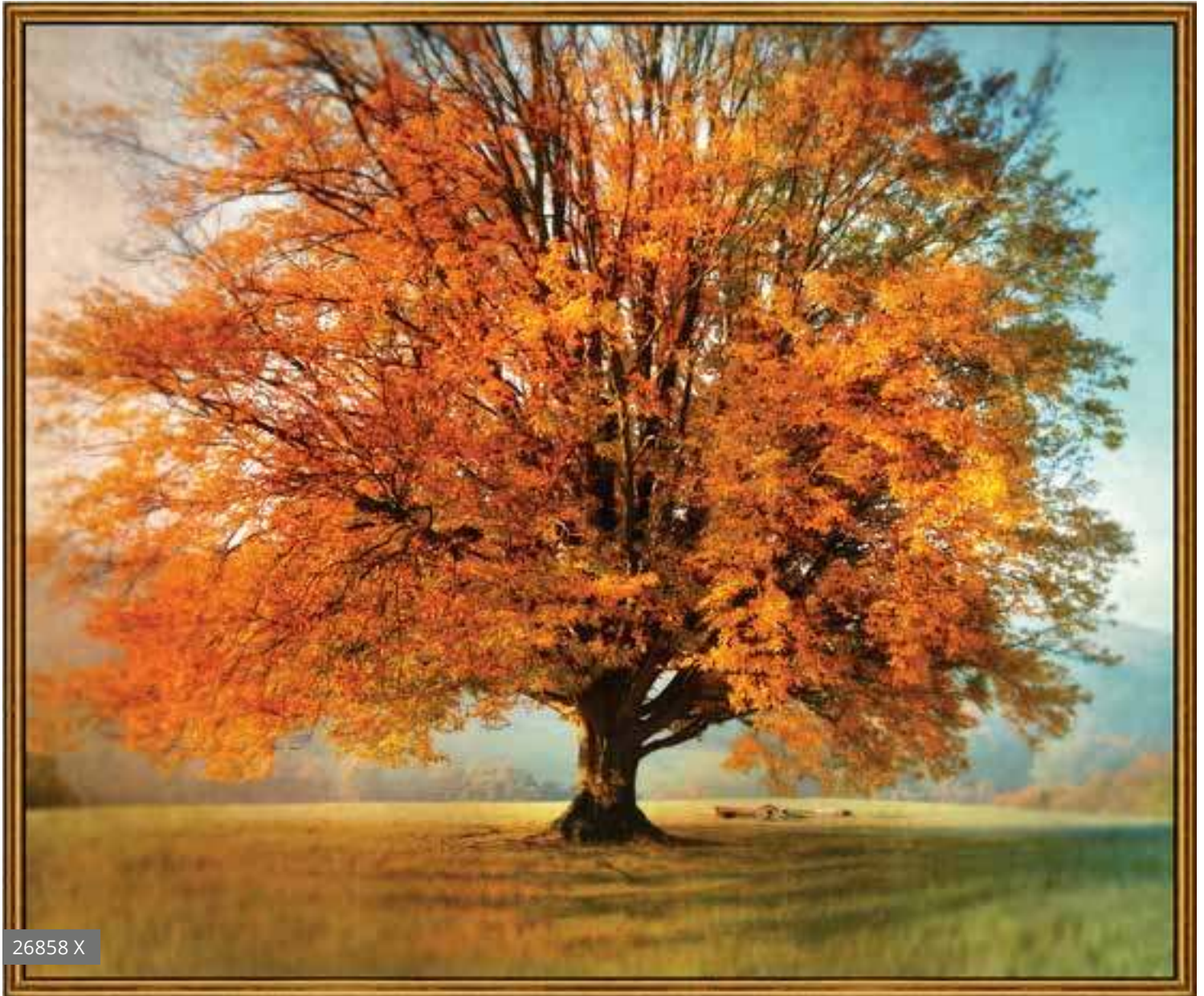


*Sassy mama's
by joyelle
where laughter is
cheaper than therapy*

ARTWORKS

Nature's palette and beauty on fabric. The subtle shadows and highlights of these inspiring images capture incredible detail. Create a work of art by customizing with our Color Blends, Harmony or other blender program fabrics.

Orders in by July 15th will ship mid October



26858 X

Autumn Tree Panel, Full repeat shown measures approximately 44" x 36" © Irene Weisz (Shown at 18% scale)

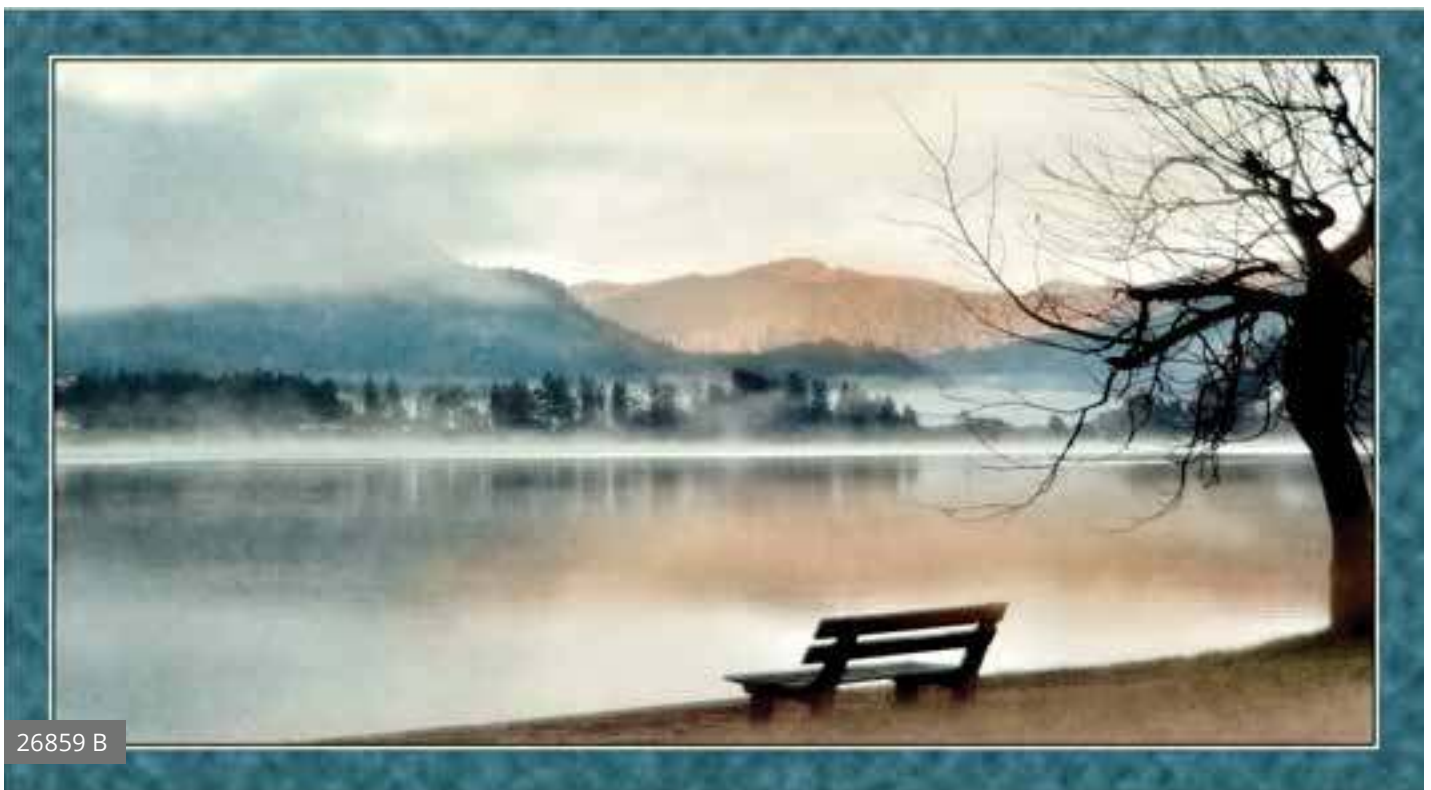


26860 A

Horse Panel, Full repeat shown measures approximately 44" x 36" © Lars Van der Goor (Shown at 14% scale)



Detail shown at 50%



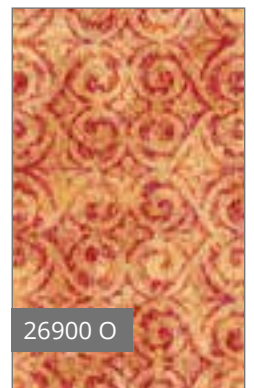
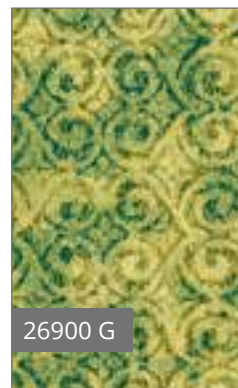
26859 B

Lake Panel, Full repeat shown measures approx. 24" x 44" © Irene Weisz (Shown at 18% scale)

Danielle

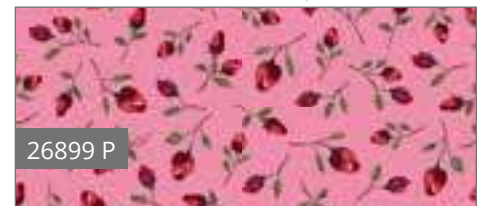
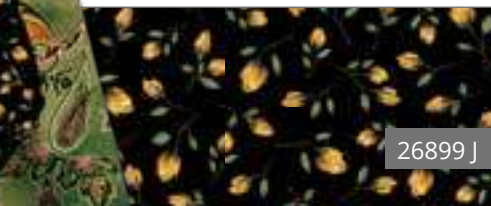
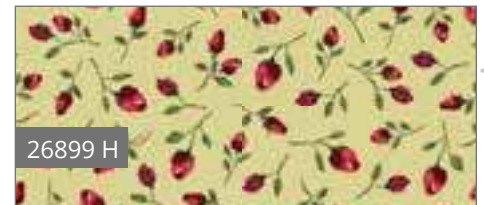
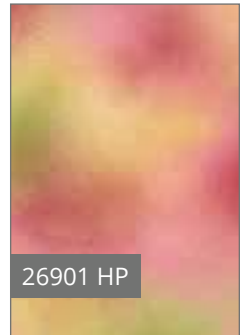
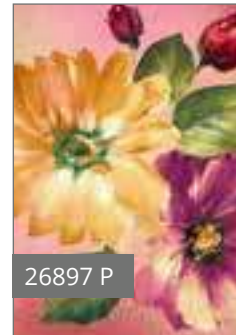
Boldly beautiful florals are blooming in this new collection from QT. Paisley prints paired with mini roses and textural allovers in lush colors are calling for a dynamic project to be born. Enjoy mixing and matching to your heart's delight with so many lovely colors and prints.

Orders in by July 15th will ship mid October



October Delivery
6 Prints, 15 Color Combos

QT



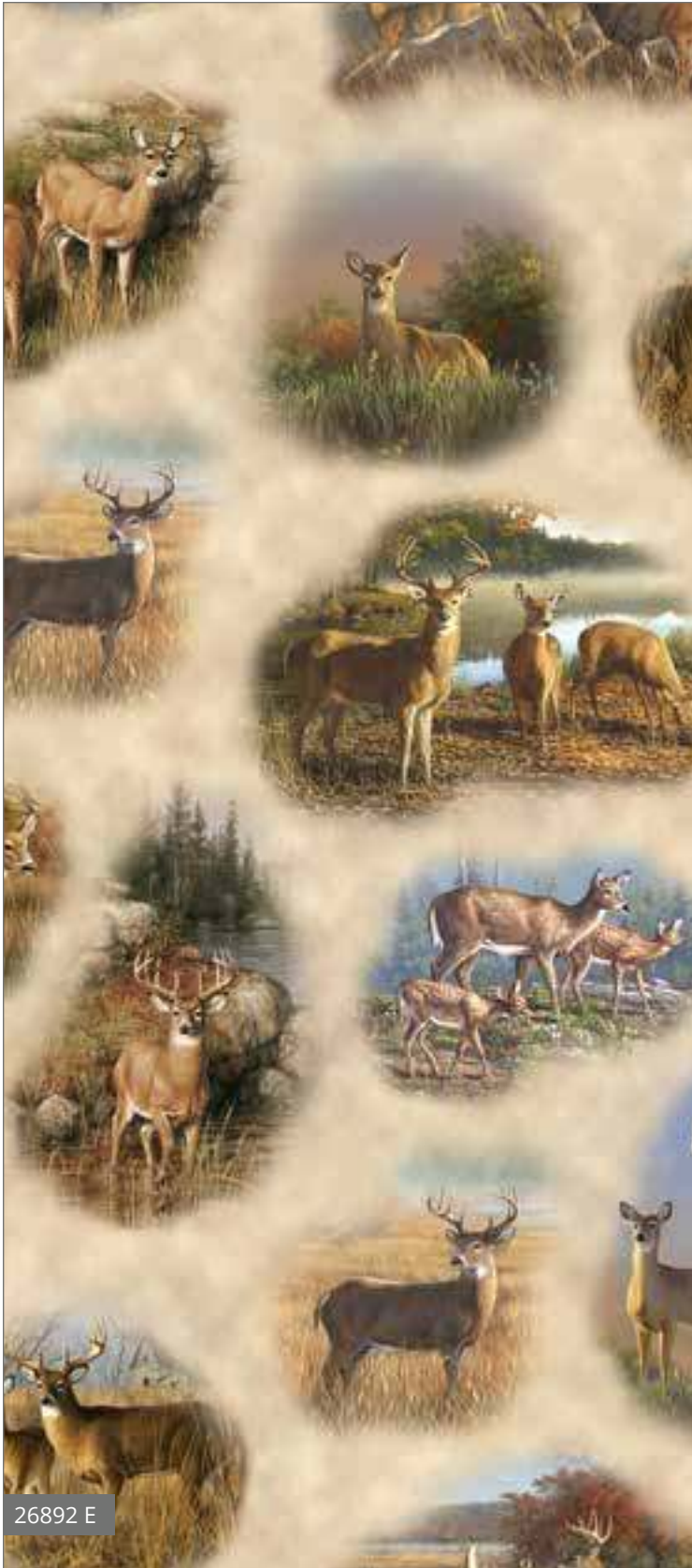
QT Studio



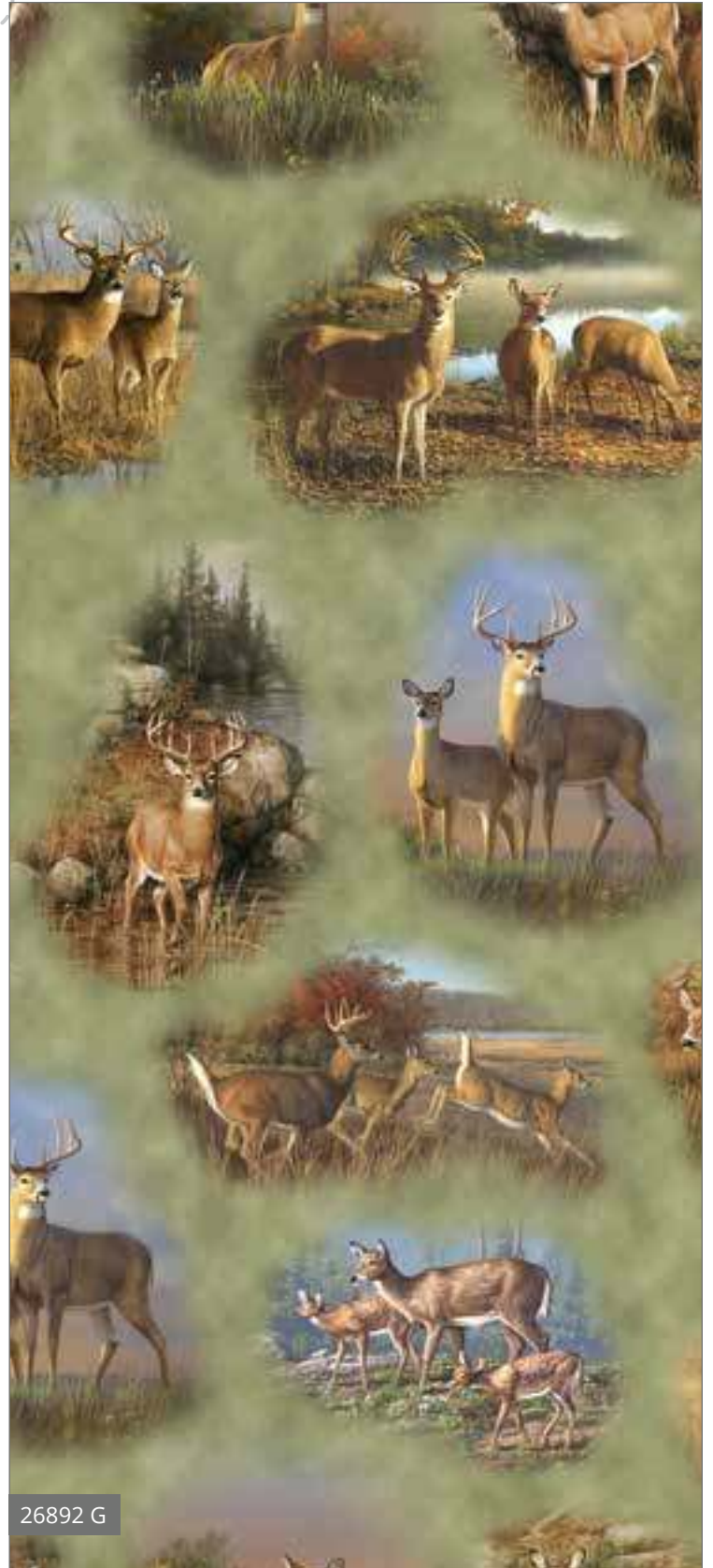
DEER VALLEY

Award-winning artists © Hautman Brothers created another gorgeous collection celebrating the beauty of nature and wildlife with stunning detail. Blending natural grass elements with a home décor hounds tooth plaid with woven texture adds more dimension and sophistication to these fabrics.

Orders in by August 15th will ship mid November



26892 E



26892 G

November Delivery
4 Prints, 11 Color Combos



Pattern: The Manhattan Bag from Emmaline Bags



26895 F



26895 AE



26895 A



26893 E



26893 F



26893 T



26894 G



26894 AE



26894 A

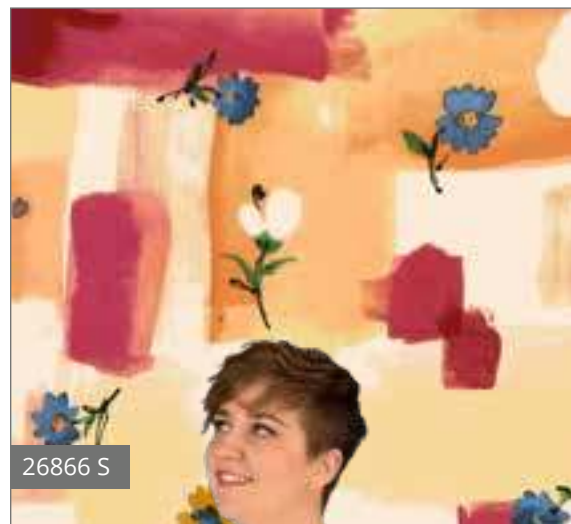
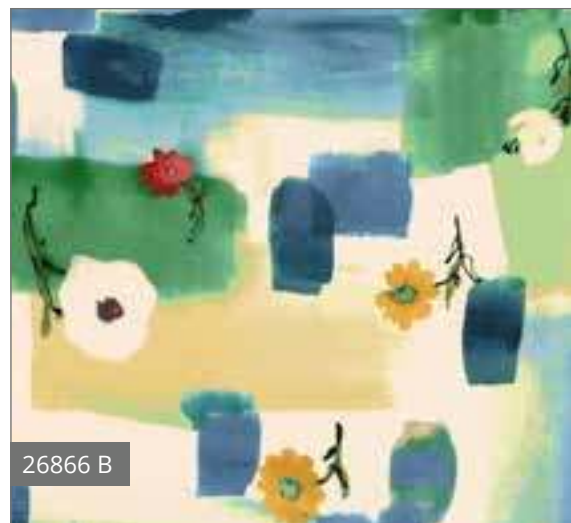
Hautman Brothers



Delia

Brushstrokes full of color and fabulous prints combine for a gorgeous collection, Delia. The watercolor trend continues in these prints mixing and matching colorful dots with paisleys and florals for colorful and textural projects.

Orders in by August 15th will ship mid November



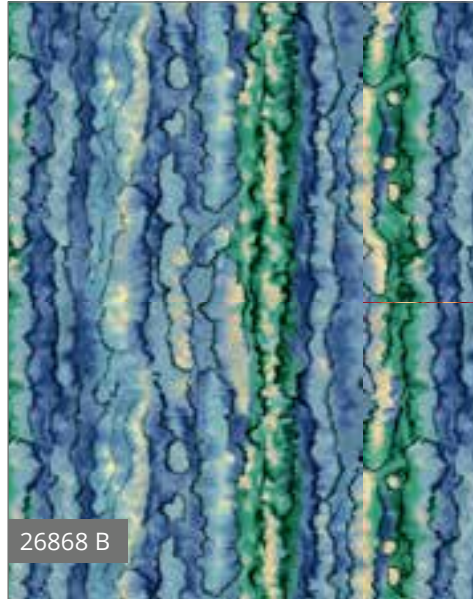
Pattern: Rhiannon Shirt from Serendipity Studio

November Delivery
5 Prints, 12 Color Combos

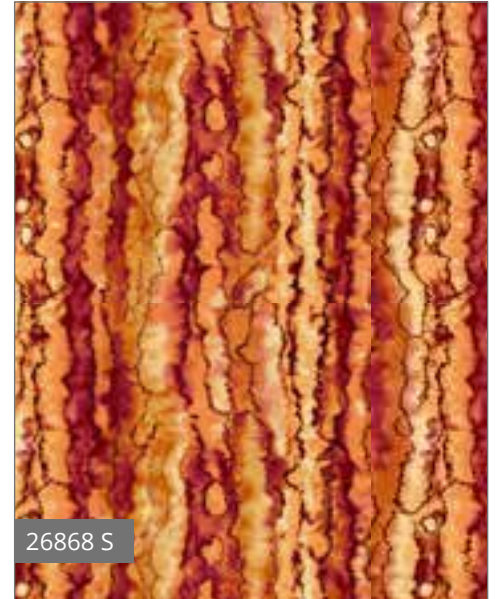
QT



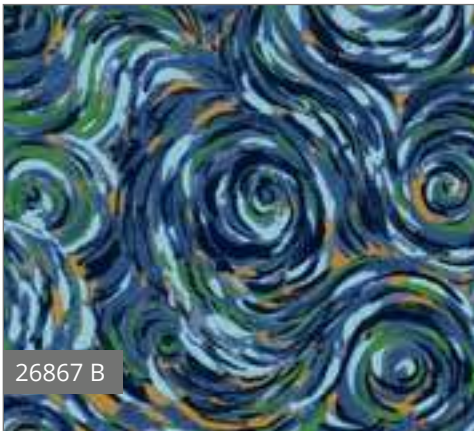
Pattern: Margo Handbag from Lazy Girl Designs



26868 B



26868 S



26867 B



26867 E



26867 M



26869 M



26869 N



26869 O



26869 S

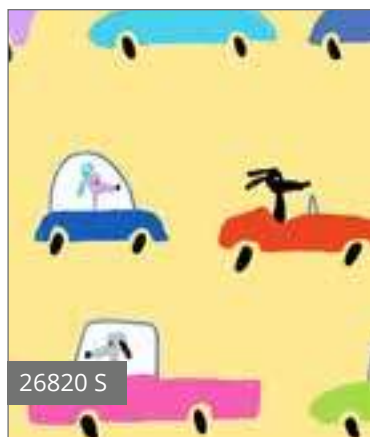
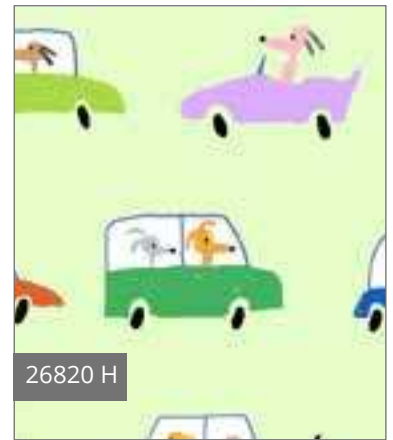
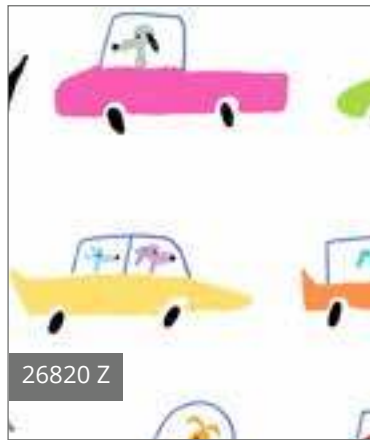
QT Studio



Dogtown

Welcome to the wonderful, woofable, Dogtown where playful pups and dashing dawgs frolic! © Amanda Haley gives us a peek into the pooches busy-bowwow life. Zooming in cars and hanging out windows are just a few of the great activities doggies know and love! Great projects for the young at heart await!

Orders in by July 1st will ship mid September



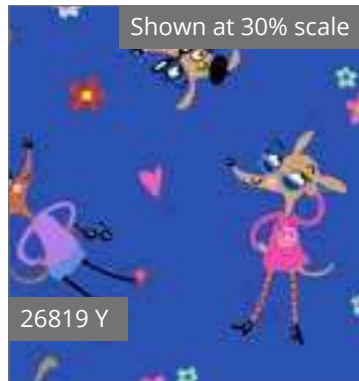
Pattern: Stacking Pop-Ups from The Fat Quarter Gypsy

September Delivery
4 Prints, 10 Color Combos



26819 S

Shown at 20% scale



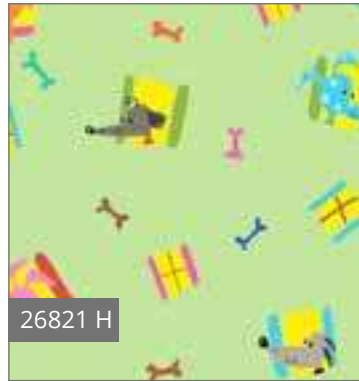
26819 Y

Shown at 30% scale



26819 Z

Shown at 30% scale



26821 H



26821 Y

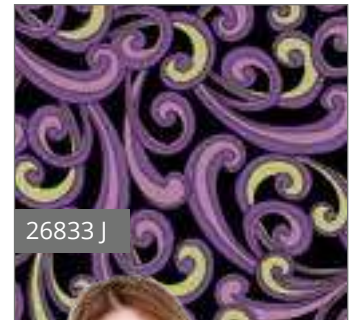
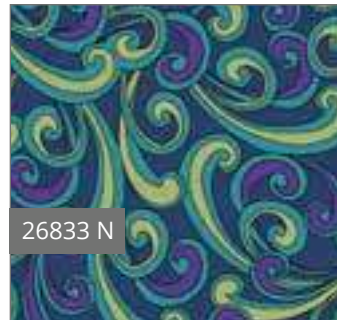
Amanda
Haley



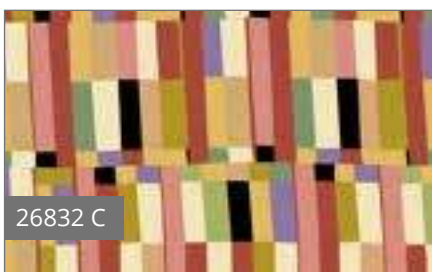
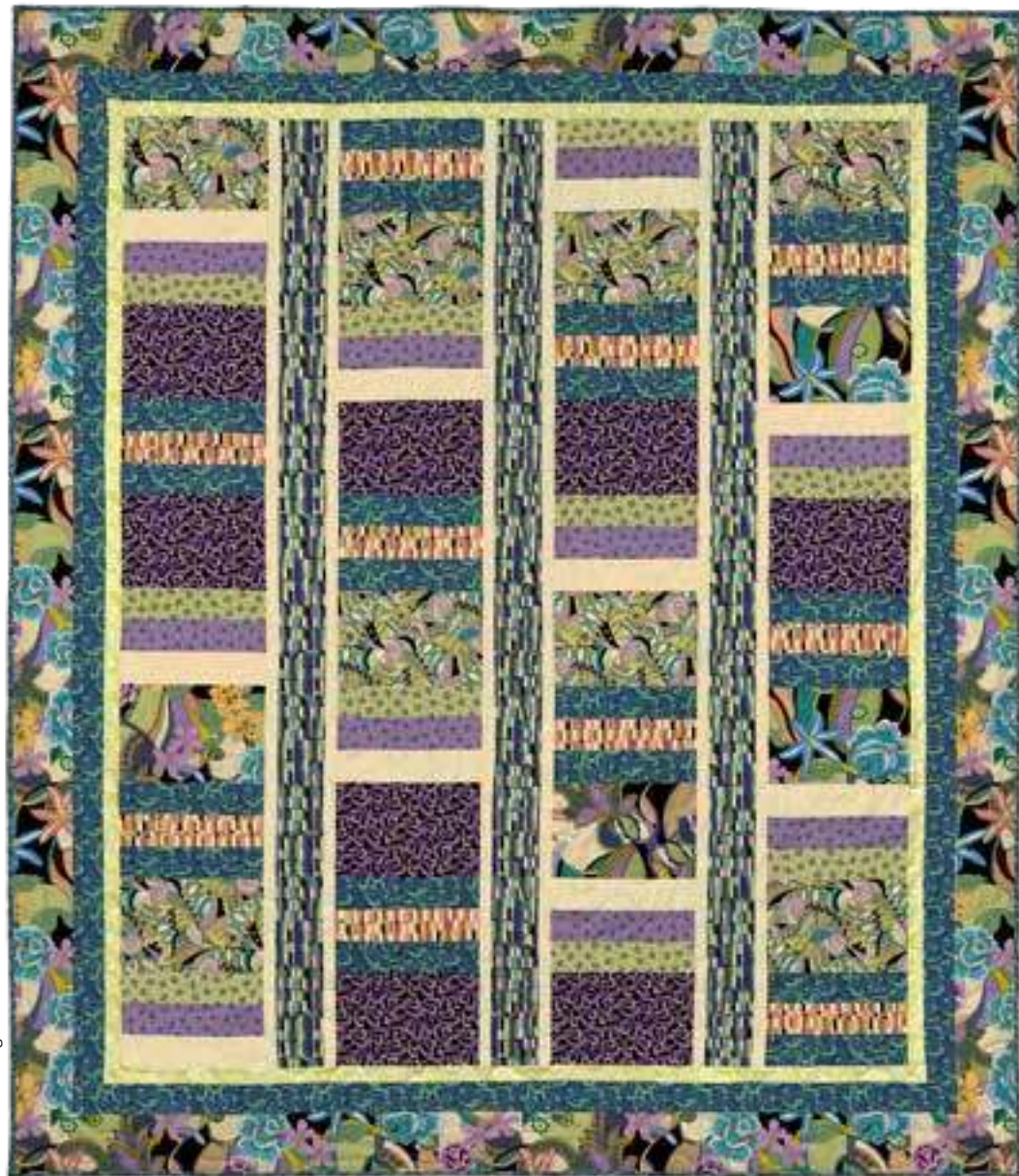
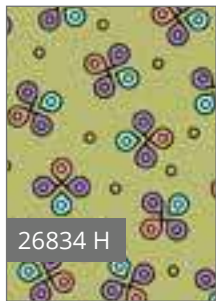
Echo

This cosmopolitan collection stuns with influences from fashion and color trends. Bold prints mix with mid-tone colors to make fabulous home décor or wearable projects! There is lots of movement and variety in this group!

Orders in by July 15th will ship mid October



October Delivery
6 Prints, 14 Color Combos



QT Studio



© QT Fabrics
Designs shown at 50% scale unless otherwise noted

Quilt: 64" x 74½". Remix of Hayden free QT quilt.

FAITH

Let Faith guide your next beautiful quilt project. The artwork of © Dan Morris is truly inspiring with holy images. Led by inspirational quote patches, stunning color and divine prints, this collection will bring blessings and warmth to whomever it touches.

Orders in by August 15th will ship mid November



November Delivery
8 Prints, 19 Color Combos



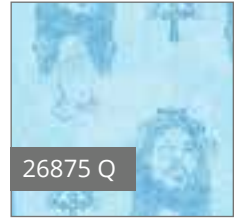
26871 N



26875 L



26875 E



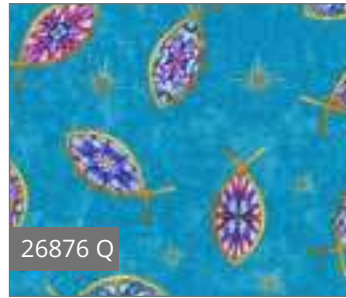
26875 Q



26871 E



26871 Q



26876 Q



26876 E



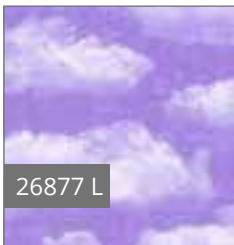
26873 N

Shown at 25% scale



26873 E

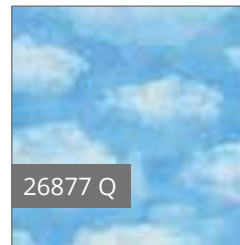
Shown at 25% scale



26877 L



26877 E



26877 Q



26874 N



Pattern: Fat Quarter Pop-Up from Fat Quarter Gypsy



26874 E

Dan Morris

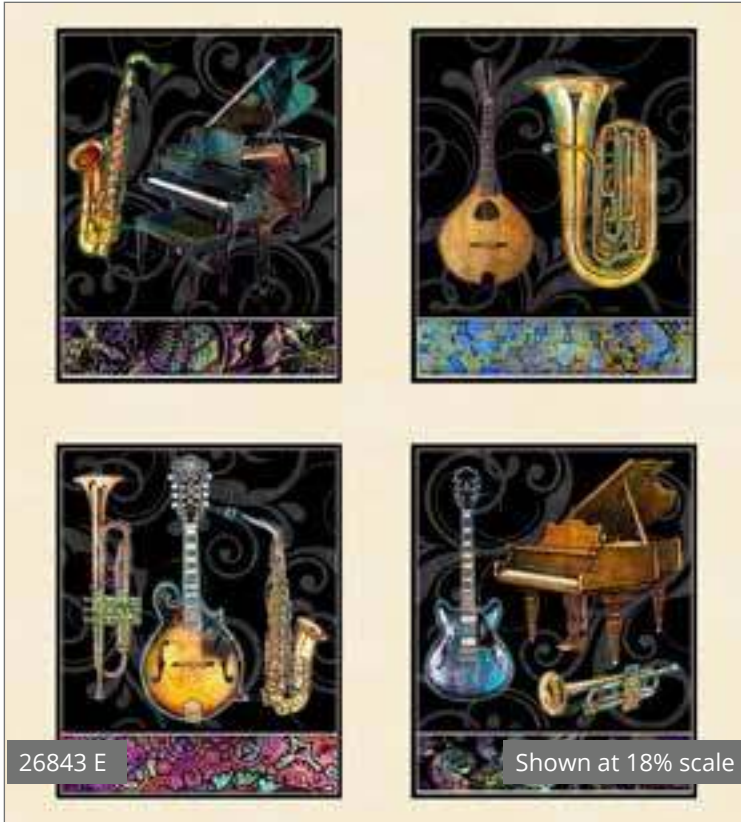


© Dan Morris
Designs shown at 50% scale unless otherwise noted

FINE TUNING

A symphony of color and prints, © Dan Morris created a sophisticated and savvy collection for any music aficionado. So many projects await these bold music-inspired designs. Just as it's hard to pick a favorite song, it's even harder to pick a favorite print in this new collection!

Orders in by August 15th will ship mid November



November Delivery
7 Prints, 18 Color Combos



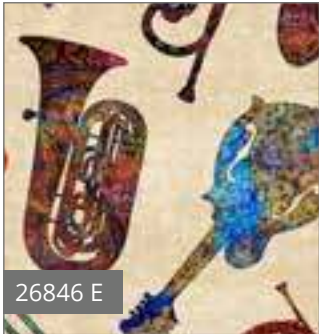
26845 J



26845 E



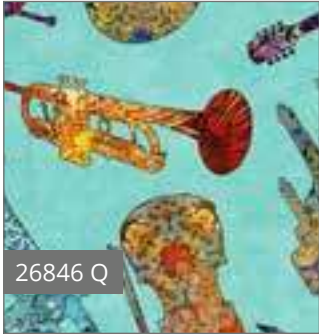
26846 J



26846 E



26847 J



26846 Q



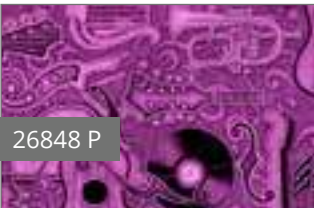
26847 E



26847 T



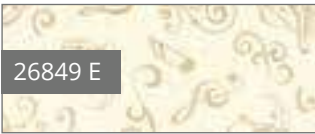
26848 A



26848 P



26848 Q



26849 E



26849 V



26849 J

Dan Morris



© Dan Morris
Designs shown at 50% scale unless otherwise noted

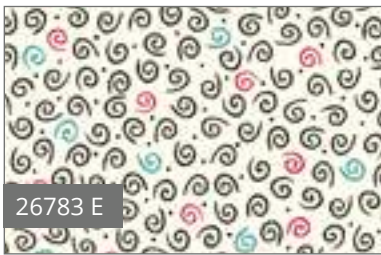
JAMBOREE

Frolic with fun fabric and lively color with Jamboree by © Christine Graf for QT. These whimsical prints bring cheer and pop to any project. Kitchen décor, apparel, merry quilts and happy crafts await!

Orders in by July 1st will ship mid September



26778 E



26783 E



26783 Q



26783 R



26779 E



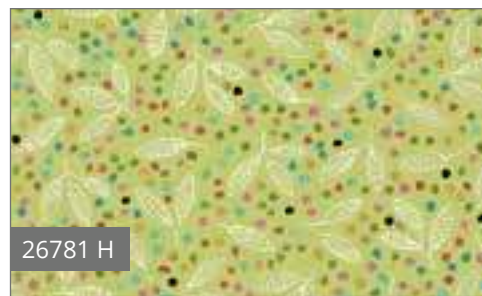
26780 E



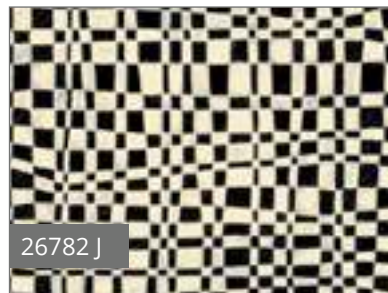
26780 J



26780 R



Pattern: Marvelous Mini Kit from Tuffet Source



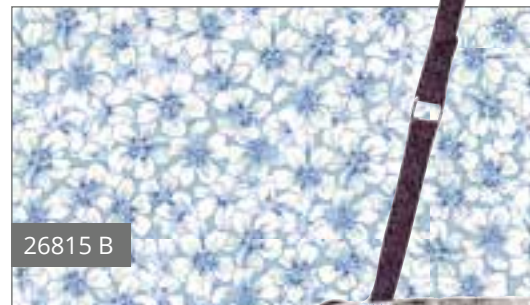
Christine Graf

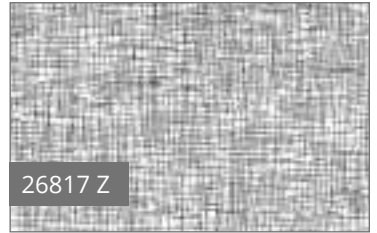
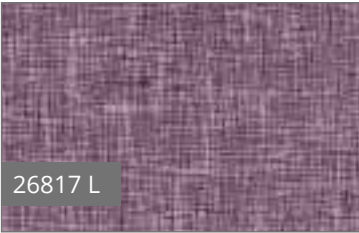
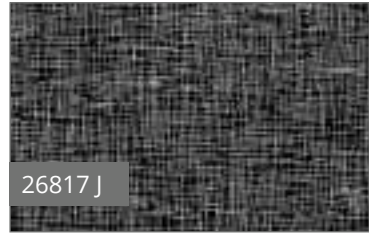


Juliette

Overprinted illustrative florals in a sophisticated color palette combine in these lovely fabrics with lots of project potential. Paired with versatile textural blenders, the colors and prints are perfect for apparel, home décor and accessories!

Orders in by July 1st will ship mid September





QT Studio





Everyday is a celebration with this awesome new collection from © Turnowsky. Pretty prints with festive balloons are perfect for any occasion. The bright and lively colors will get the party started with your next project!

Orders in by July 15th will ship mid October



26904 J



26904 Y



26904 S



26904 Z



Pattern: The Betsy Apron from Indygo Junction



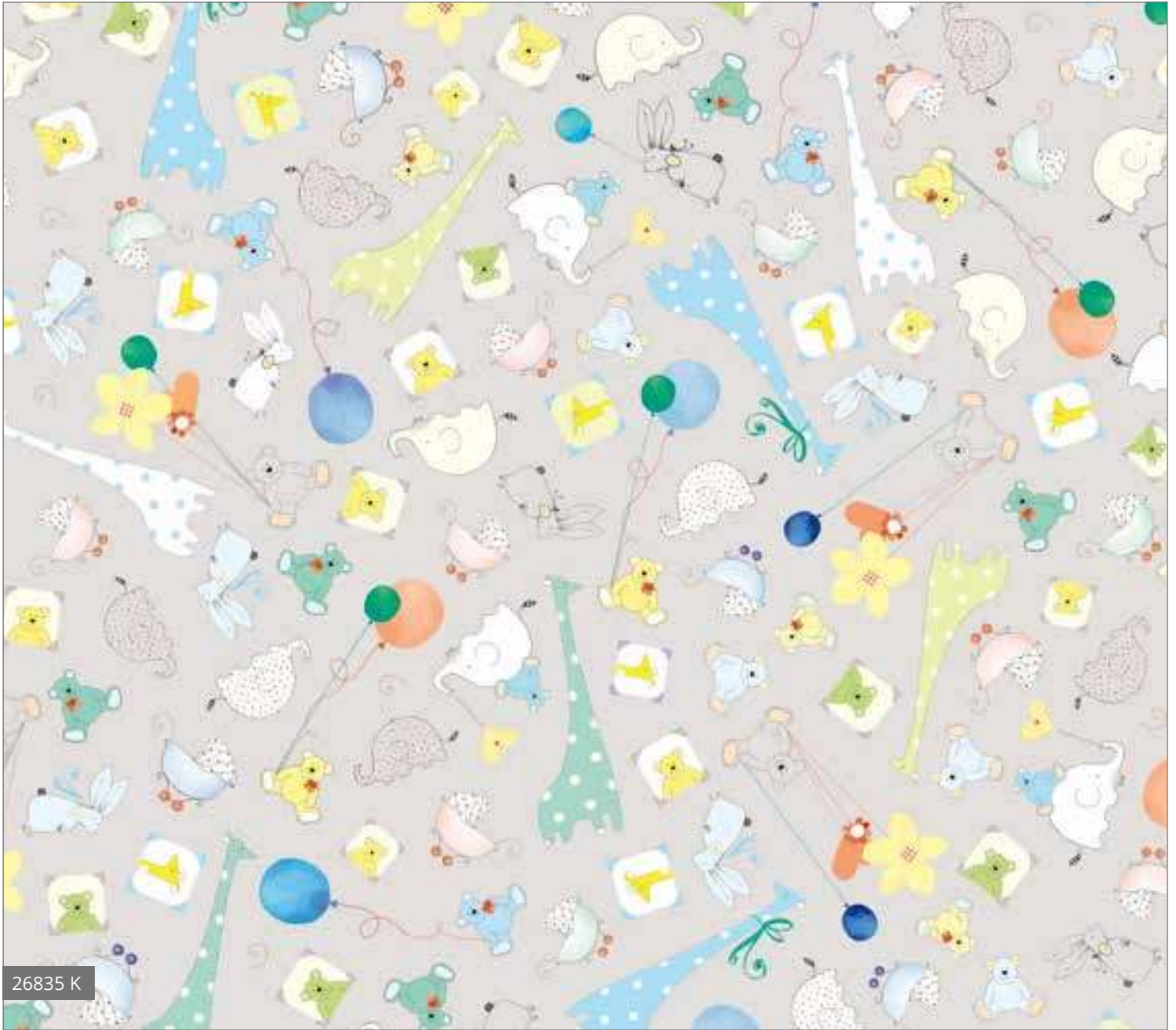
October Delivery
3 Prints, 12 Color Combos

HOUSE of
TURNOWSKY
EST. 1940

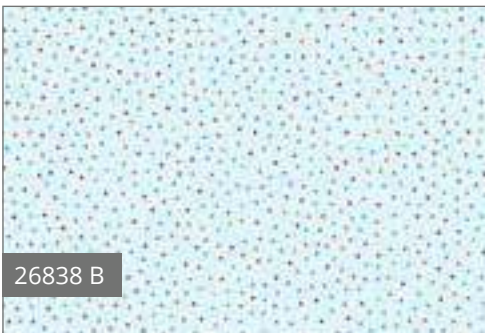
LIL' SWEETIES

Get lost in reverie with these adorable animals at their festive gathering. Delicate drawings and soft colors create stylish and on-trend sophisticated nursery décor possibilities. These Lil' Sweeties will be sure to steal your heart. © Turnowsky

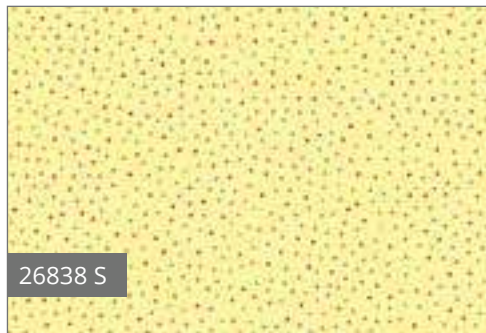
Orders in by July 1st will ship mid September



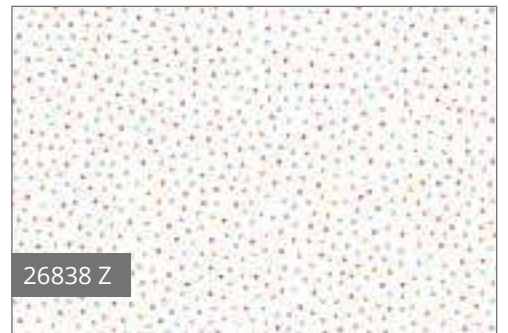
26835 K



26838 B



26838 S



26838 Z

September Delivery
4 Prints, 9 Color Combos

HOUSE of
TURNOWSKY
EST. 1940



Pattern: Ava Tie Top from Izzy & Ivy Designs



26837 B



26837 S



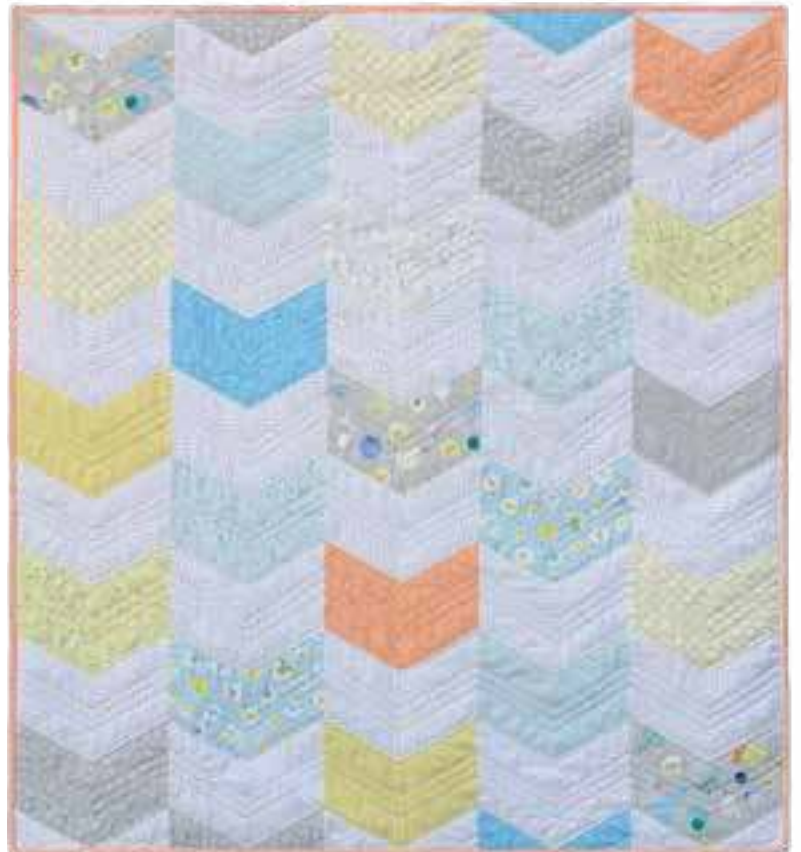
26837 Z



26836 B



26836 K



Pattern: Giggle Quilt from Jaybird Quilts



JAMBOREE

Christine
Graf



Echo©

LOST WORLD

Dinosaurs brought back from extinction onto fabric by © Dan Morris for QT Fabrics. The textural detail and striking renderings will bring your next project to life! Can you name each of these creatures? These fabrics will combine to make your favorite Paleontologist shriek with excitement (like a T-Rex)

Orders in by July 1st will ship mid September



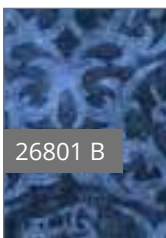
26799 Q

Shown at 18% scale



Shown at 25% scale

26800 E



26801 B



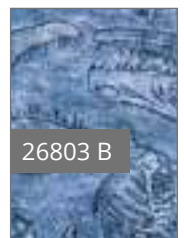
26801 Q



26802 E



26803 Q



26803 B



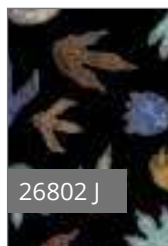
26800 J



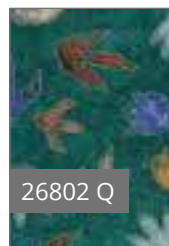
26800 Q



26801 A



26802 J



26802 Q



26803 E



26798 E

Shown at 18% scale



26798 J

Shown at 18% scale



26797 J

Shown at 12% scale



26797 Q

Shown at 12% scale



Dan Morris



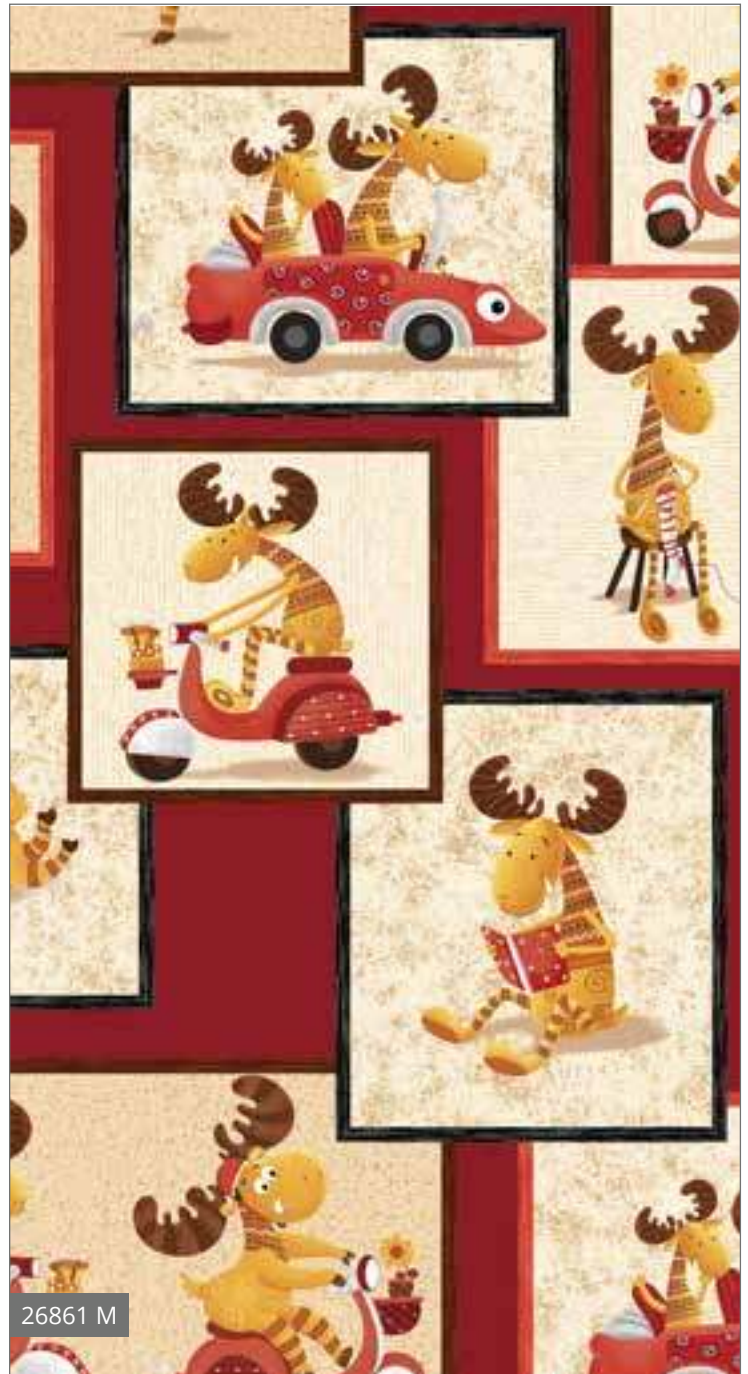
Moose on the Loose

No need to worry, these are fun and friendly Moose on the Loose from © Tickles. Biking, reading, knitting... these are very busy moose! Whimsical fabrics in a bold color palette of gold, red and cream with black accents are great for any age group!

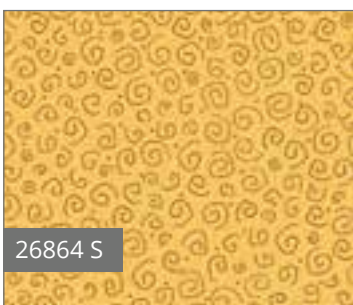
Orders in by July 15th will ship mid October



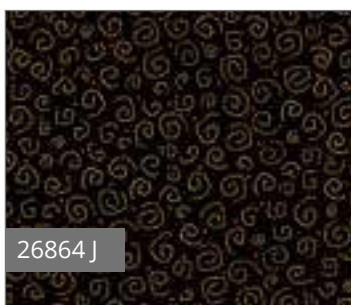
26861 J



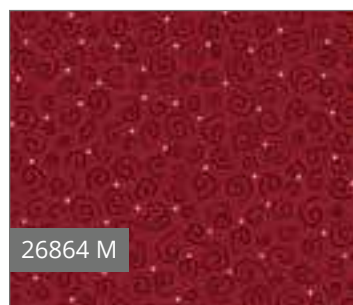
26861 M



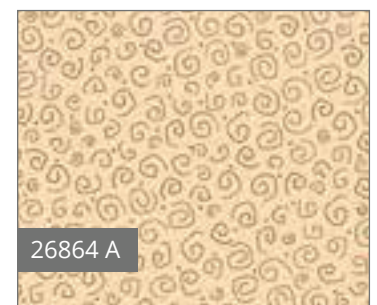
26864 S



26864 J

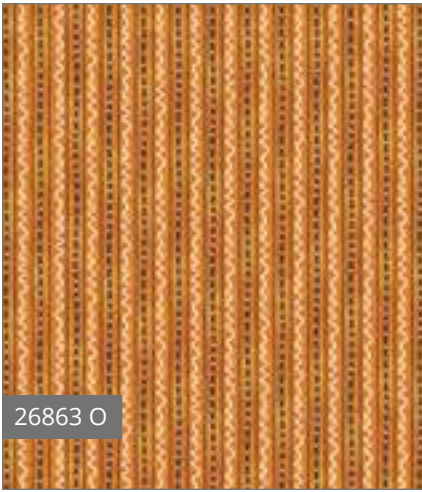


26864 M

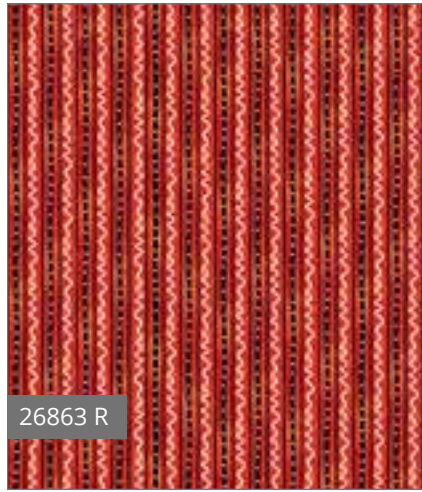


26864 A

October Delivery
4 Prints, 11 Color Combos



26863 O



26863 R



26862 A



26862 J



26862 E



Nidhi Wadhwa



Nature's Bears

Beautifully rendered paintings are brought to life on fabric. These bear prints and coordinates are from the artwork of © Mark Keathley. Rustic colors enhance the natural elements and work well together for home décor projects.

Orders in by July 1st will ship mid September

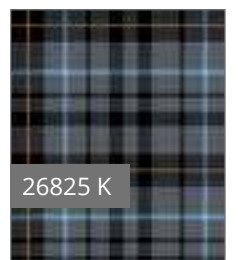
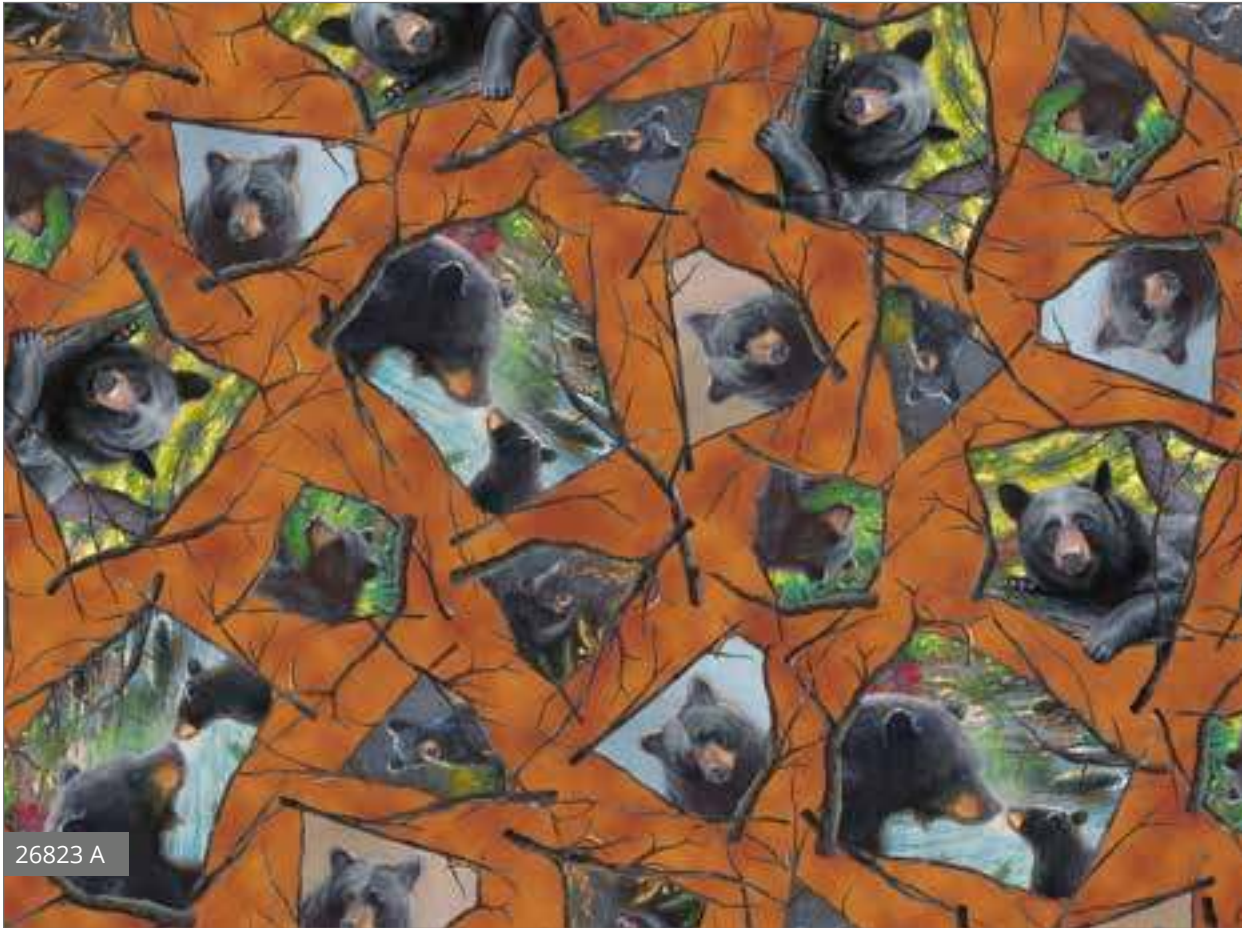


Pattern: The Shopper from Indygo Junction

September Delivery
4 Prints, 8 Color Combos

Mark
Keathley

JQ
LICENSING



Pattern: Small, Large & Extra Large Stacking Pop-Ups from The Fat Quarter Gypsy



Mark Keathley



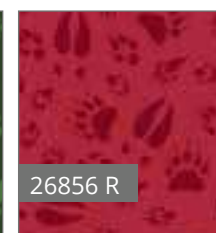
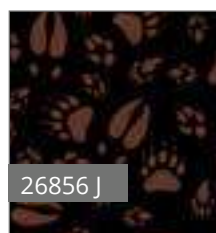
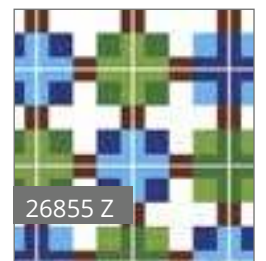
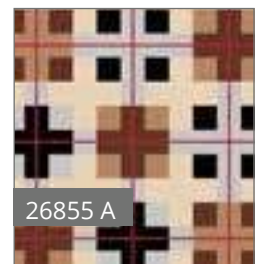
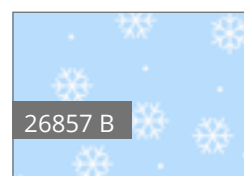
NORTH WOODS NEIGHBORS

Meet new friends and cozy up with © Desiree Designs new collection of fun fabrics. Lots of friendly animals and fun sayings are brought together with festive color and coordinates. The main panel and wooden picture patches work so well with the border stripe for big impact in your next project!

Orders in by July 1st will ship mid September



Pattern: Claire Handbag from Lazy Girl Designs



September Delivery
8 Prints, 18 Color Combos

Desiree's
Designs



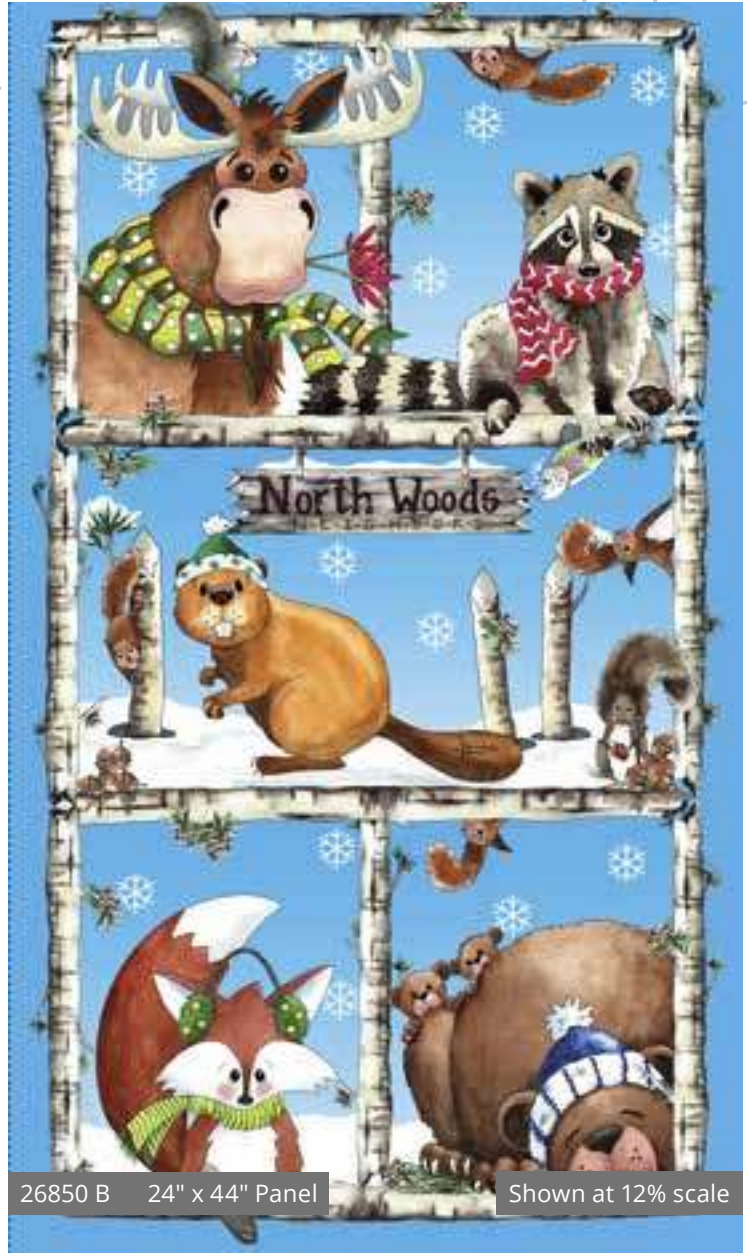
26853 Z



26853 B



26853 A



26850 B 24" x 44" Panel

Shown at 12% scale



26851 J 24" x 44" Panel

Shown at 12% scale



26854 Z



26854 J

Desiree Habicht



© Desiree's Designs Designs shown at 50% scale unless otherwise noted

POPCORN & PEANUTS

What's better than popcorn and a movie – the Peanuts, with popcorn... and a movie! Grab a seat and get ready for a fun show with Charlie, Snoopy and the gang. So many fun projects await to bring your favorite © Peanuts to life!

Orders in by May 15th will ship mid August



26839 X 24" x 44" Panel

Shown at 18% scale

Pattern: Little Vicki Dress from Izzy & Ivy Designs



26841 R



26841 B



26841 J



26840 J

Shown at 38% scale



26840 Z

Shown at 38% scale

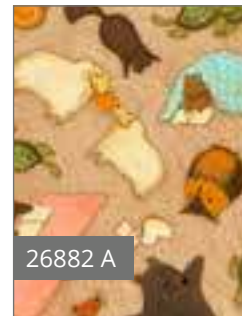


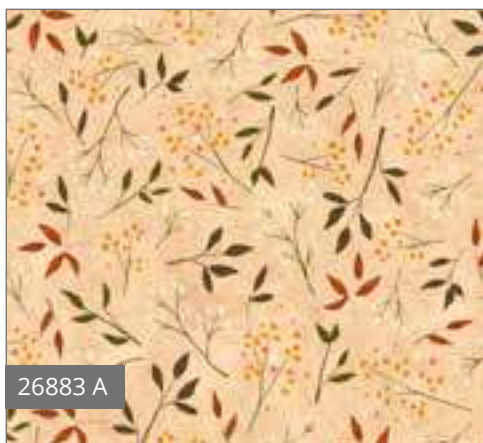
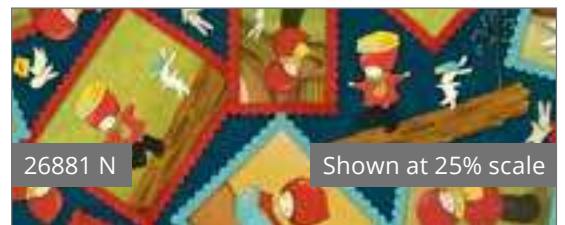
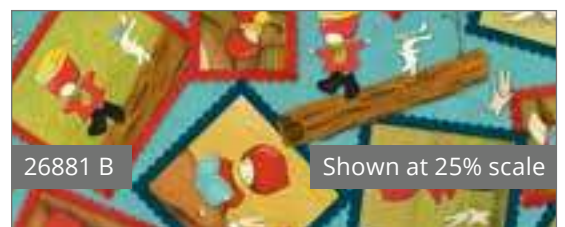
26842 X

Reading Together

"Poppi Loves is a little girl with big dreams and a fierce curiosity. She invites her readers to join her and her woodland family as they journey through the wild woods and beyond. Poppi Loves teaches her readers important lessons." Create magical projects and the love with Reading Together by © Santoro.

Orders in by August 15th will ship mid November

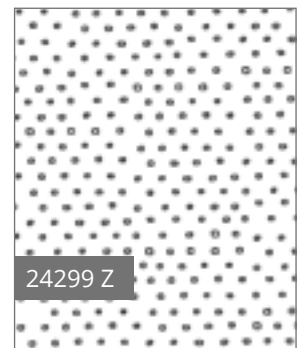
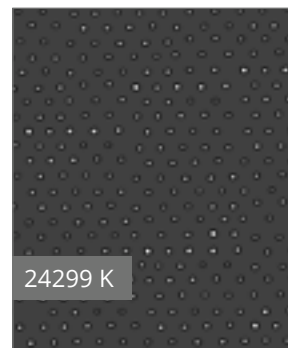
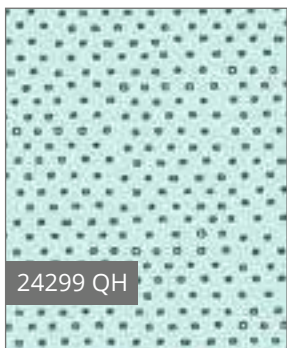




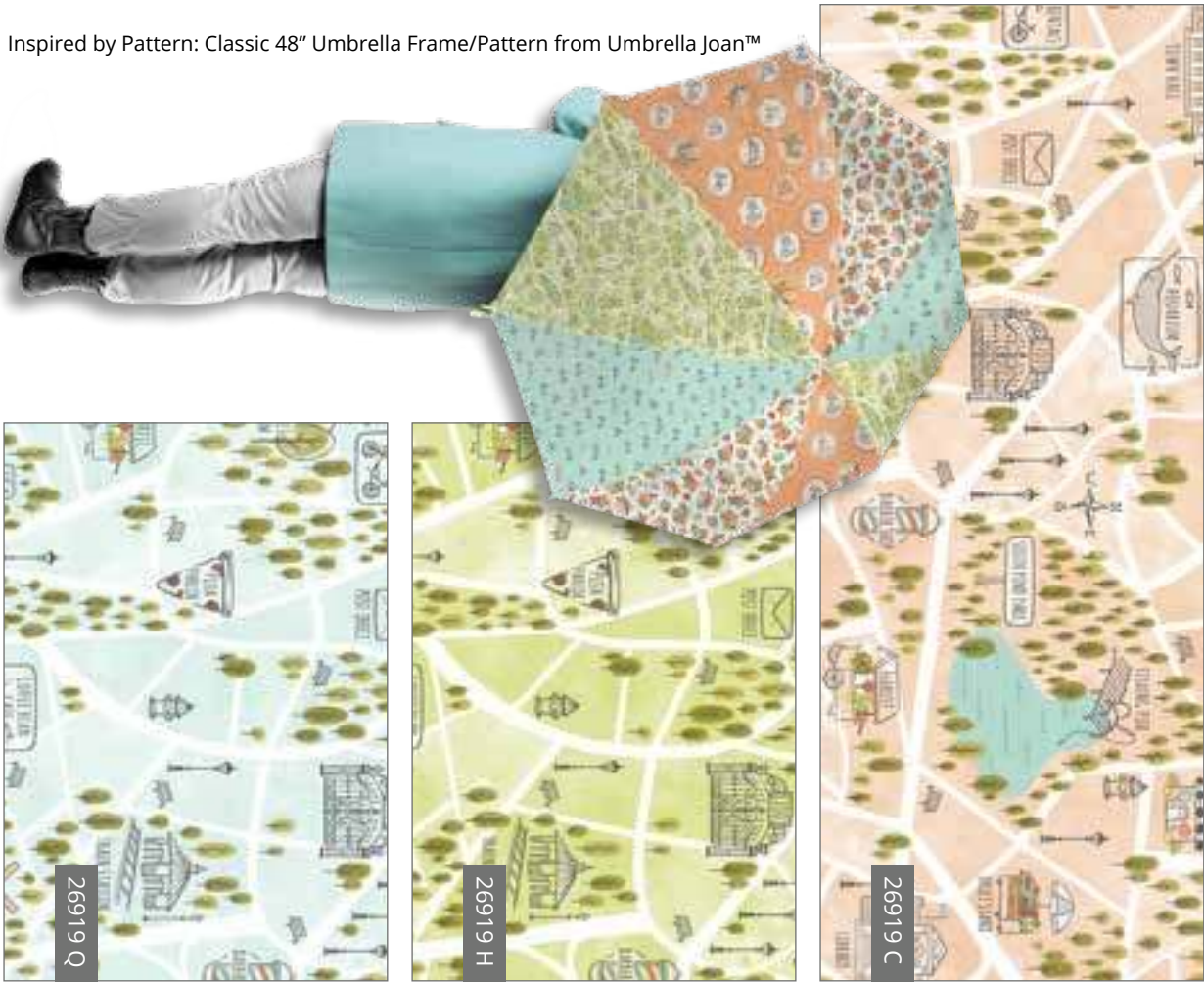
SCENIC ROUTE

Enjoy the ride along with © Alicia Jacobs Dujets new collection, Scenic Route. The darling map print fabric leads the way to a day dream of destinations. Hop on your vintage bike, and smell the flowers with a little breeze and fresh colors to create lots of fabulous projects.

Orders in by August 15th will ship mid November



Inspired by Pattern: Classic 48" Umbrella Frame/Pattern from Umbrella Joan™



November Delivery
5 Prints, 11 Color Combos

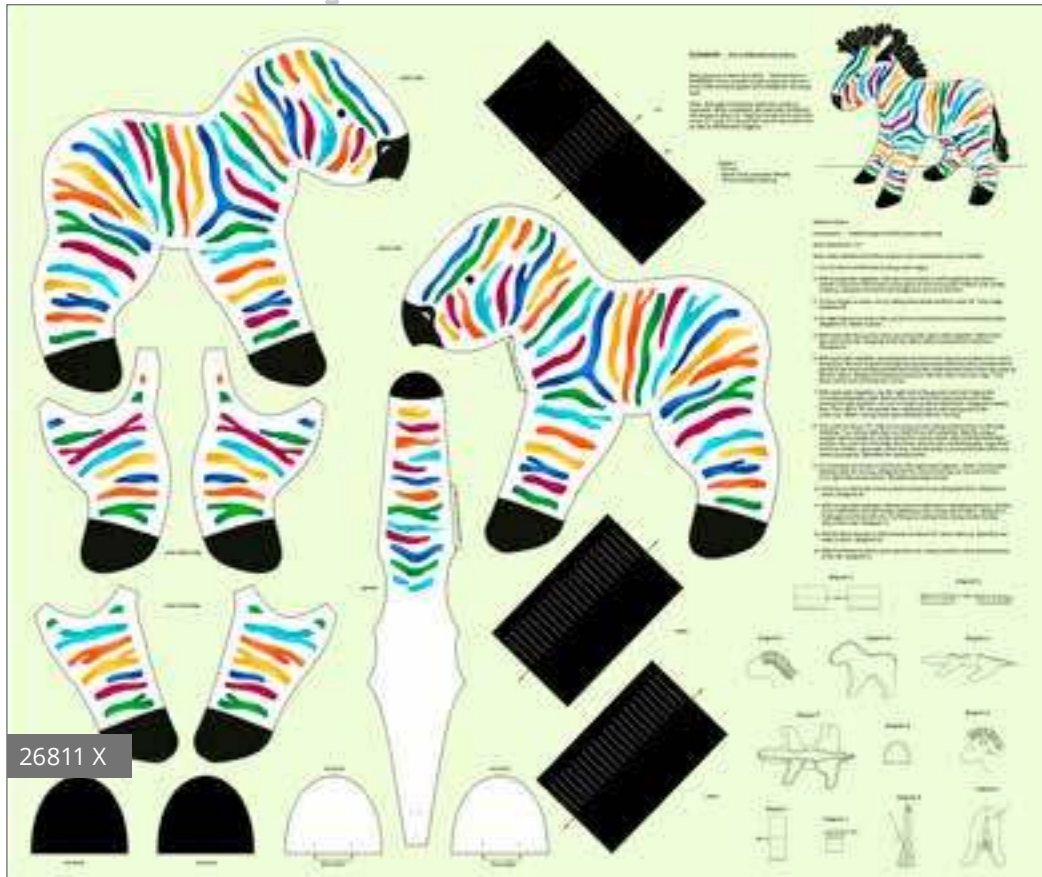


Sew & Go

VI

Sew many projects in our ever-growing library of Sew & Go fabrics! This season, we've added a friendly rainbow Zebra to snuggle and another soft book for your favorite little one. These panels are perfect to teach the next generation of sewists. Just grab a panel, Sew... & Go!

Orders in by July 15th will ship mid October





seW sassy

Sassy sayings and color combine in this sewing-themed collection by Joey Heiberg for QT Fabrics. These Dolly Mamas are sew-phisticated and full of sass. Cheery color and coordinates will make projects to celebrate your favorite past-time!

Orders in by July 15th will ship mid October



26784 J



26785 B

Shown at 30% scale



Shown at 17% scale

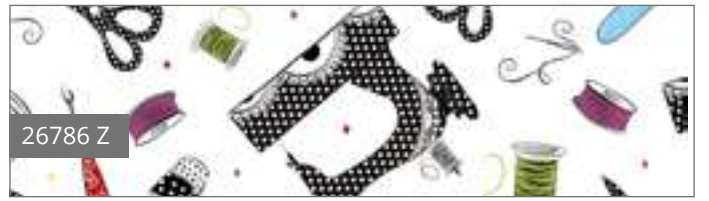
26785 P

Shown at 30% scale



26786 J

October Delivery
5 Prints, 12 Color Combos



26786 Z



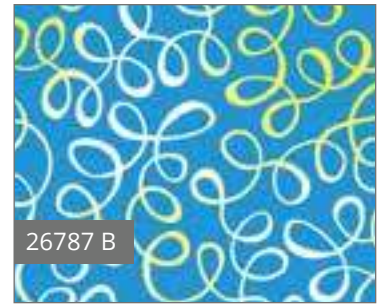
26786 B



26786 P



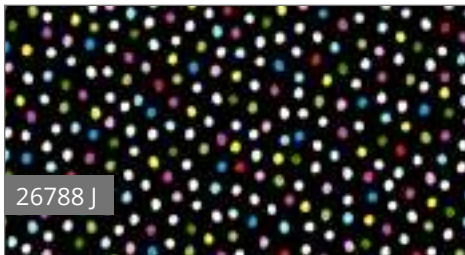
26787 J



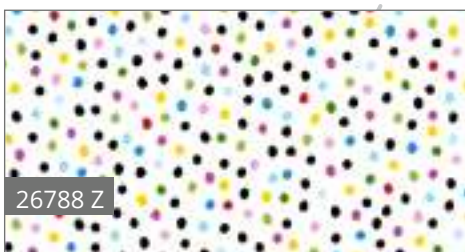
26787 B



26787 P



26788 J



26788 Z

Joey Heiberg



Sugar Rush

Your sweet tooth is calling! All the sugar without the calories... add some sprinkle to your next project with Sugar Rush. You'll never run out of candy, or ideas, with these charming fabrics to sweeten up your sewing space!

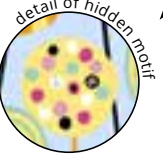
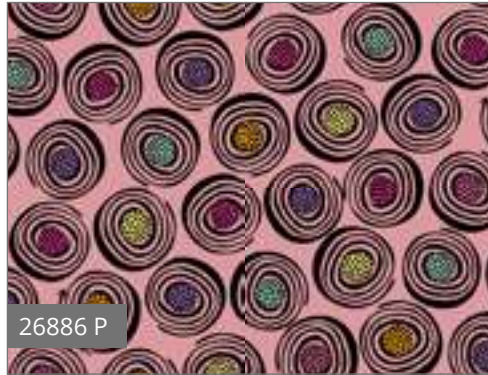
Orders in by July 15th will ship mid October



October Delivery
6 Prints, 13 Color Combos



look for us
in every print



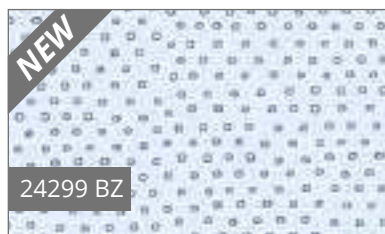
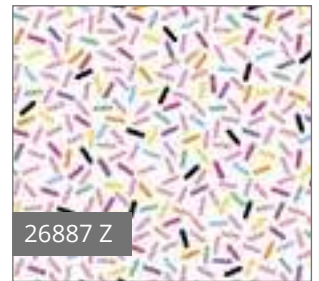
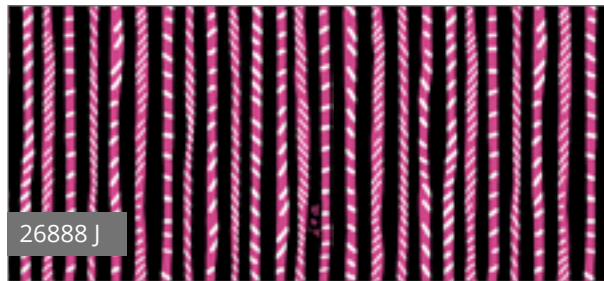
look for us
in every print



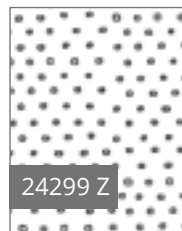
look for us
in every print



Pattern: Betsy Apron from Indigo Junction



look for us
in every print



QT Studio



Designs shown at 50% scale unless otherwise noted

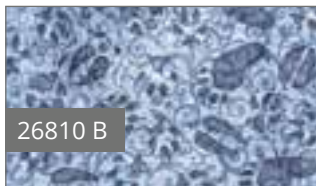
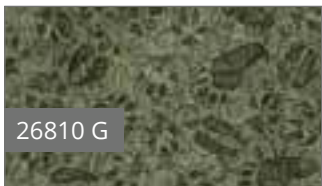
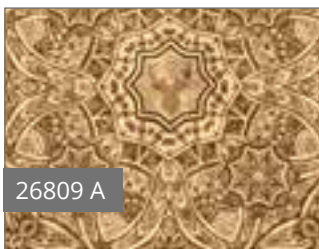
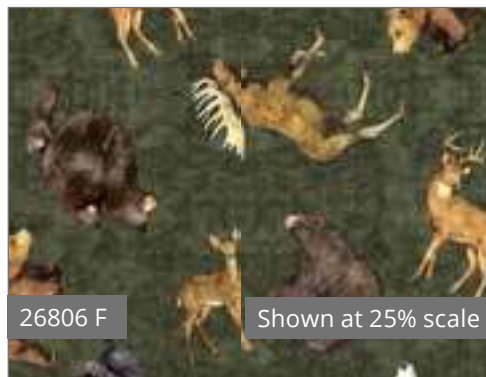
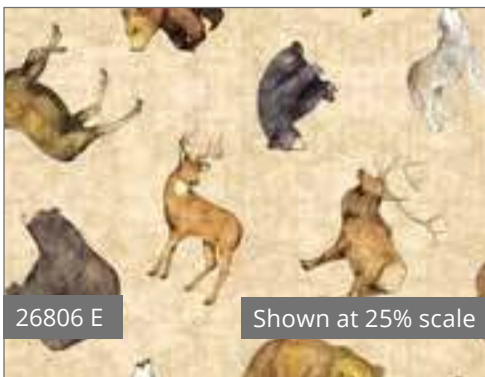
© Ink & Arrow for QT Fabrics

Timberland Trail

A menagerie of beautiful wildlife with southwestern styling combine in Timberland Trail by © Dan Morris. With nature-inspired coordinates, rich color and texture, these fabrics are surely to inspire a beautiful cozy, cabin-chic project for your home.

Orders in by July 15th will ship mid October





Dan Morris



© Dan Morris
Designs shown at 50% scale unless otherwise noted

WILD SIDE

Vibrant colors and pattern play mixed with geometrics and wild animals for another dynamic collection from © Turnowsky. Large animal patches star in this collection designed to go boldly to the Wild Side of your next great project.

Orders in by August 15th will ship mid November



26905 N 24" x 44" Panel

Shown at 20% scale



26905 R 24" x 44" Panel Shown at 20% scale



26907 S



26907 Z



26907 N

November Delivery
4 Prints, 11 Color Combos

HOUSE of
TURNOWSKY
EST. 1940



26906 H



26906 N



26906 O



26908 S



26908 O



26908 Z

With Love

A little love is shared in every print from this collection by © Turnowsky for QT. Lots of dazzling hearts dancing in these pretty prints... so perfect to share with the one you adore. Think little outfits for little sweethearts or a loving quilt project, all you need is to make it With Love.

Orders in by August 15th will ship mid November



26889 J



26889 R



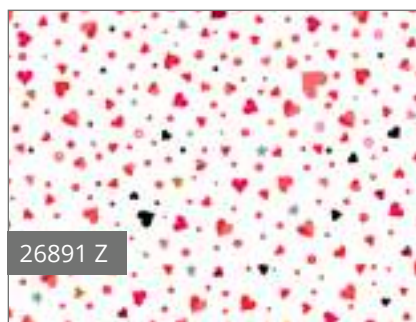
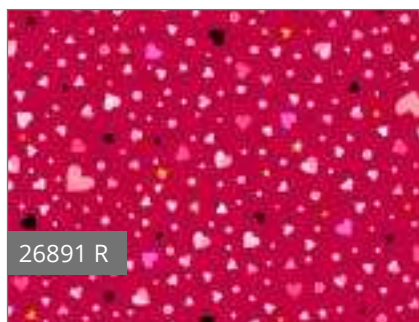
26889 Z



Pattern: Marvelous Mini Kit from Tuffet Source

November Delivery
3 Prints, 9 Color Combos

HOUSE of
TURNOWSKY
EST. 1940



Pattern: The Shopper from Indigo Junction

© House of Turnowsky
Designs shown at 50% scale unless otherwise noted

Work in Progress

Caution! Lots of Work in Progress is going on with this new designer © Tickle for QT Fabrics. Big trucks, powerful machines, and lots of plans are happening in this boisterous collection for kids of all ages. Grab your hard hat and start your next great project!

Orders in by July 1st will ship mid September



26826 X

Shown at 32% scale



26829 Z



26829 O



26829 B



September Delivery
4 Prints, 10 Color Combos



US, Canada (EXCLUSIVE TO ALL OF THE BRAND)
Australia, New Zealand, Japan, Chile (EXCLUSIVE TO ALL OF BRAND)
UK, EU (EXCLUSIVE BY COLLECTION)



26827 O



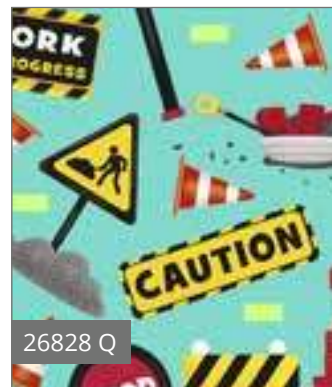
26827 Y



26827 Q



26828 Z



26828 Q



26828 B

Nidhi Wadhwa



Artworks X - Horses



44½" x 52"
Designed by Cyndi Hershey

Artworks X - Lake



49¾" x 30¾"
Designed by Deb Finan

Artworks X - Tree



54½" x 64½"
Designed by Wendy Sheppard

Danielle



54" x 72"
Designed by Pine Tree Country Quilts

Deer Valley



QT

54" x 67"
Designed by Ann Haley

Delia - Calico Beans



fat quarter gypsy

FS

60½" x 70½"
Designed by The Fat Quarter Gypsy

Dogtown



QT

62½" x 82½"
Designed by Cyndi Hershey

Echo - Wildflower Meadow



quilt
addicts
anonymous

FS

60" x 60"
Designed by Stephanie Soebbing

Faith



92½" x 92½"
Designed by Wendy Sheppard

Fine Tuning



58" x 75"
Designed by Sue Harvey & Sandy Boobar

Jamboree



59" x 71¾"
Designed by Sue Harvey & Sandy Boobar

Jamboree - Margo Handbag



10¼" x 9¼" x 4"
Designed by Lazy Girl Designs

We've created many exciting partnerships with pattern designers to bring you top quality inspiration using QT Fabrics.

PROJECTS

Juliette



71½" x 92½"

Designed by Kari Nichols of Mountainpeak Creations

Juliette



51" x 57"

Designed by Sue Harvey & Sandy Boobar

Let's Celebrate - Party Time! Placemats and Apron



Placemat Size: 14" x 18"
Designed by Vicki Niro

Let's Celebrate - Bacchus Bag



19" W x 12" H x 7" D
Designed by Wives of Whitewood

Lil' Sweeties - Dashing Quilt



54½" x 54½"
Designed by Janice Averill

Lil' Sweeties - It's a Breeze



46" x 58"
Designed by Donna Robertson

Lost World



78" x 90"
Designed by Sue Harvey & Sandy Boobar

Moose on the Loose- Morrison the Moose



72" x 72"
Designed by Heidi Pridemore

We've created many exciting partnerships with pattern designers to bring you top quality inspiration using QT Fabrics.

PROJECTS

Nature's Bears



FS

51" x 63"

Designed by Sue Harvey & Sandy Boobar

Northwoods Neighbors



QT

59" x 83"

Designed by Cyndi Hershey

Scenic Route - Artful Bags/Artist Portfolio



Serendipity
STUDIO

FS

12" H x 16½" W x 1¼" thick
Designed by Kay Whitt

Scenic Route



THE
FAT QUARTER GYPSY

FS

63" x 79"
Designed by The Fat Quarter Gypsy

Sew Sassy



Quilt Size: 64" x 72"
Designed by Wendy Sheppard

Sew Sassy - Candice Bag



11" x 11½" x 4½"
Designed by Lazy Girl Designs

Sugar Rush



11" x 11½" x 4½"
Designed by Donna Robertson

Sugar Rush



44" x 62"
Designed by QT Fabrics

Timberland Trail - Star Bright



FS

72" x 88"
Designed by Tony Jacobson

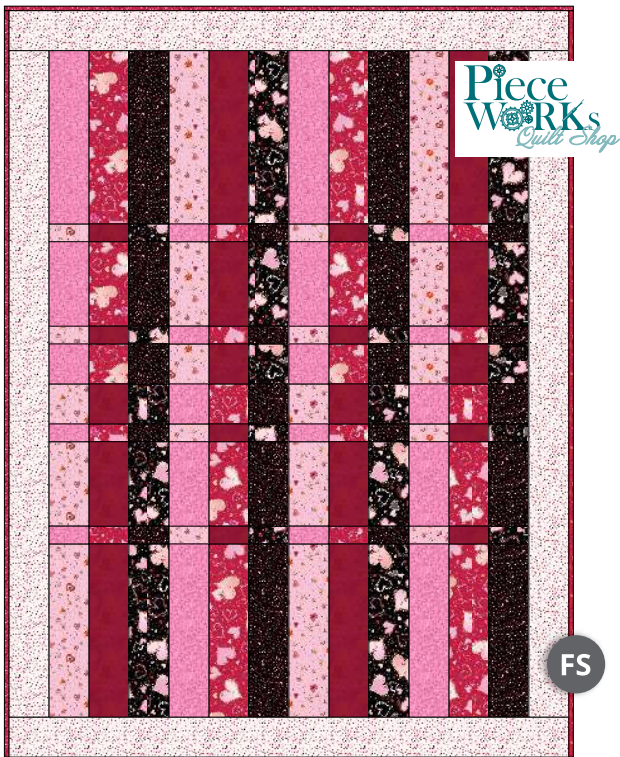
Wild Side



QT

60" x 90"
Designed By Ann Haley

With Love - Ombré Madres



FS

62" x 84"
Designed by Tony Jacobson

Work in Progress



FS

44½" x 56½"
Designed by Kari Nichols

Color Blends & Ombre Stitches



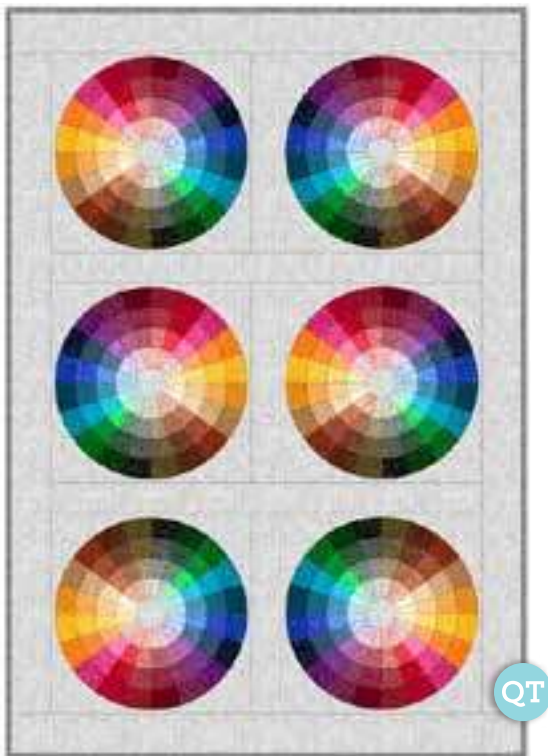
65" x 75"
Designed by Daniela Stout

Color Blends & Ombre Stitches - Flame On



54" x 54"
Designed by Scott Hansen

Harmony - Color Theory



49" x 71"
Designed by Deb Finan

Pixie Dots - Ladybug Loop



32" x 32"
Designed by Sheri Morrill-Cifaldi



Color your Quilt Shop
with QT Basics!

Avalon 108" Wide
SKU 26312

100% Cotton. 108"
60 x 60. D/R approx. 18 yds.



Q (Turquoise)



S (Gold)



B (Blue)



O (Orange)



W (Midnight)



R (Red)



G (Green)



V (Purple)



H (Lime)



P (Pink)



T (Rust)



A (Brown)



AE (Tan)



Z (White)



E (Cream)



K (Gray)



Full repeat shown of 26312 O at 50% - Full repeat measures approx. 12" x 12"

Color Blends

SKU 23528

100% Cotton. 43/44"
60 x 60. D/R approx. 12 yds.



EA (Vanilla)



E (Sand)



AE (Camel)



AK (Taupe)



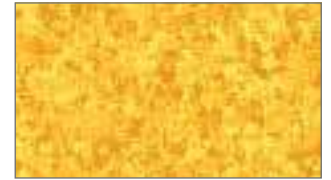
SE (Buttercream)



SZ (Daffodil)



SK (Antique Gold)



ST (Sunflower)



CZ (Shrimp)



CO (Coral)



D (Dusty Rose)



RA (Azalea)



PZ (Cotton Candy)



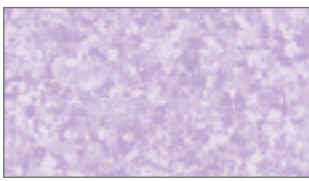
P (Wild Rose)



PV (Fuchsia)



PM (Magenta)



LE (Iris)



L (Wisteria)



VL (Hyacinth)



VJ (Grape)



BE (Sky Blue)



B (Crystal Blue)



YZ (Ultra Blue)



BW (Rich Royal)



BZ (Chambray)



QK (Slate Blue)



QE (Ocean)



Q (Turquoise Mist)



HG (Kelly Green)



G (Leaf Green)



FJ (Evergreen)



HE (Celadon)

All designs shown at 100%

In-Stock Fabrics



A (Nutmeg)



AJ (Warm Brown)



T (Paprika)



SA (Amber)



OS (Carrot)



OT (Fiesta Orange)



R (Red)



MR (Sangria)



PD (Peony)



PR (Strawberry Pink)



MJ (Garnet)



VD (Orchid)



VP (Dark Orchid)



V (Plum)



LZ (Light Periwinkle)



LB (Periwinkle)



KZ (Ash)



N (Indigo)



K (Graphite)



KJ (Charcoal)



QB (Turquoise)



QZ (Seafoam)



QH (Jade)



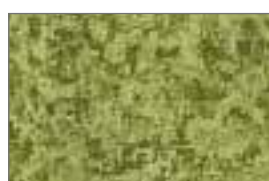
GF (Spruce)



HZ (Lime)



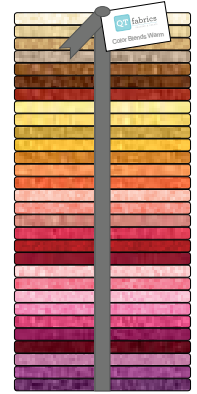
HS (Pistachio)



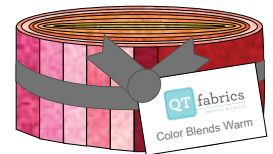
GH (Olive)



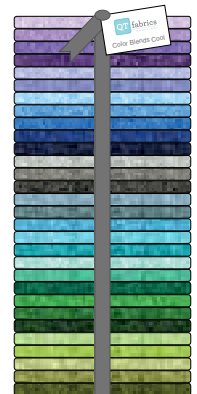
F (Avocado)



WARM
(30) Fat Quarters
Color Blends
FATQUAR CBWARM 3PACK



WARM
(30) 2½" Strips
Color Blends
STRIPS CBWARM 6PACK



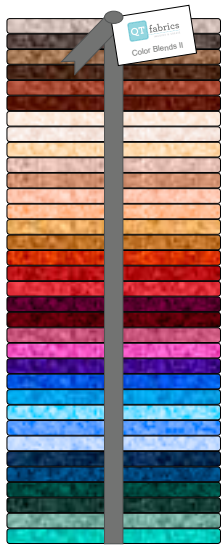
COOL
(30) Fat Quarters
Color Blends
FATQUAR CBCOOL 3PACK



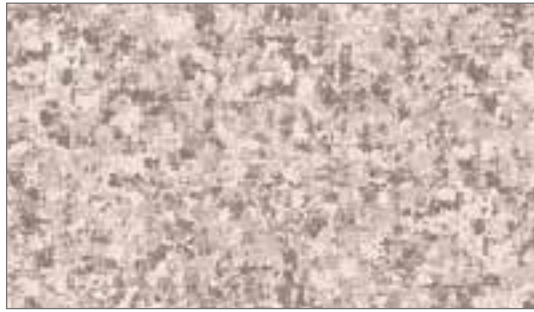
COOL
(30) 2½" Strips
Color Blends
STRIPS CBCOOL 6PACK

Color Blends II
SKU 23528

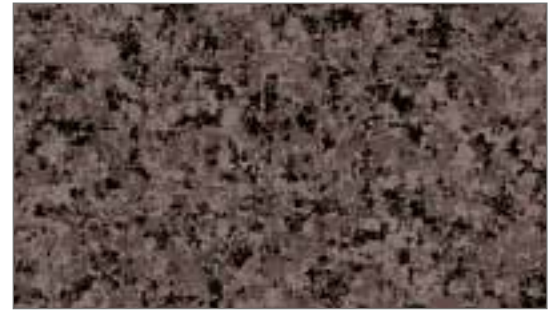
100% Cotton. 43/44"
60 x 60. D/R approx. 12 yds.



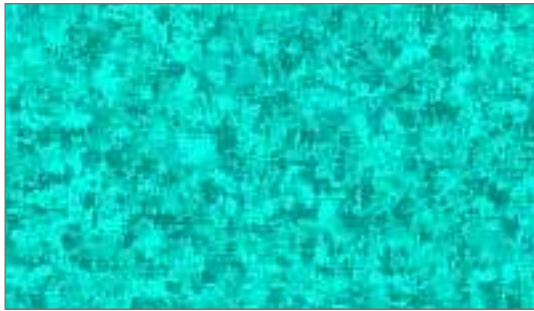
(34) Fat Quarters
Color Blends II
FATQUAR CBII 3 PACK



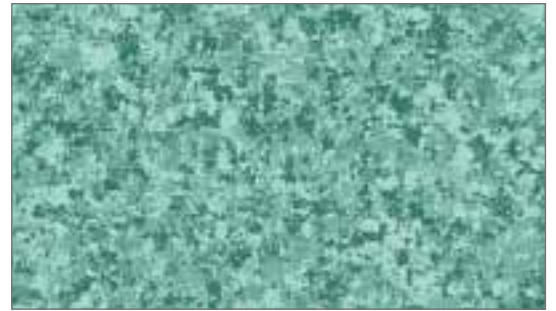
KE (Dove)



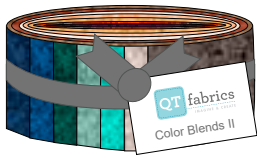
JK (Pewter)



GQ (Jadeite)



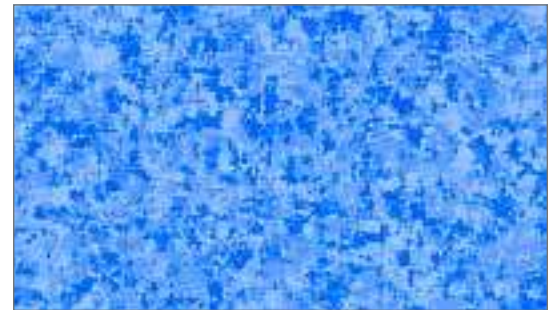
HQ (Cyprus)



(34) 2½" Strips
Color Blends II
STRIPS CBII 6PACK



WX (Ice Blue)



WB (French Blue)



O (Vermilion)



RO (Tomato)



RD (Geranium)



MT (Brick)



EZ (Oatmeal)



EK (Bisque)



ES (Parchment)



AD (Mocha)

All designs shown at 100%

In-Stock Fabrics



AX (Tobacco)



AT (Bark)



TC (Spice)



TA (Rust)



FQ (Fir)



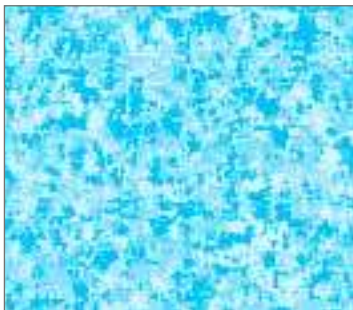
GJ (Juniper)



BY (Liberty Blue)



NW (Navy)



BX (Glacier Blue)



BQ (Cyan)



YW (Ultramarine)



VK (African Violet)



VM (Mulberry)



DM (Raspberry)



PL (Cyclamen)



SU (Gold Nugget)



AC (Acorn)



C (Cinnamon Sugar)



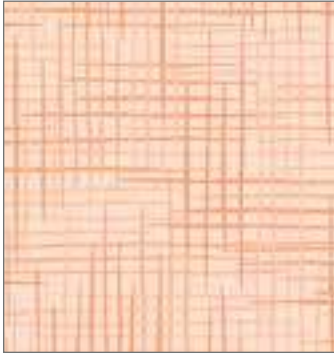
OZ (Apricot)



S (Butterscotch)

Harmony Brights

100% Cotton Flat or Double Brushed Flannel. 42/43"
60 x 60. D/R approx. 12 yds.



24776 O (Melon)
24776 OFLN



24777 O (Apricot)
24777 OFLN



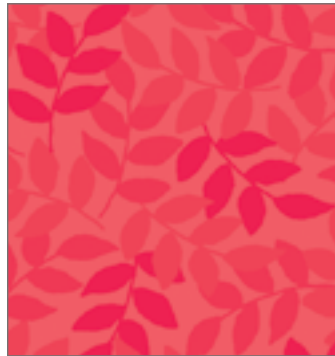
24778 O (Tangerine)
24778 OFLN



24779 O (Carrot)
24779 OFLN



24776 CR (Peony)
24776 CRFLN



24777 CR (Geranium)
24777 CRFLN



24778 R (Red)
24778 RFLN



24779 R (Crimson)
24779 RFLN



24776 L (Lilac)
24776 LFLN



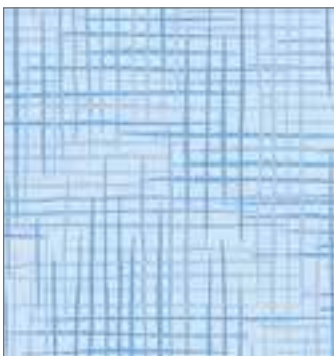
24777 L (Crocus)
24777 LFLN



24778 V (Pansy)
24778 VFLN



24779 V (Grape)
24779 VFLN



24776 B (Powder Blue)
24776 BFLN



24777 BY (Blue Aster)
24777 BYFLN



24778 Y (Sapphire)
24778 YFLN

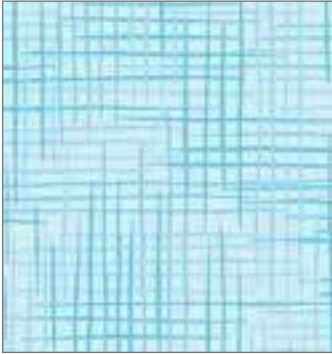


24779 Y (Royal)
24779 YFLN

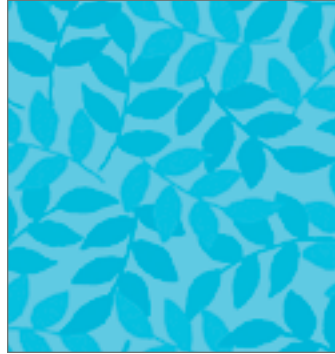
All designs shown at 100%

In-Stock Fabrics

QT



24776 Q (Turquoise Blue)
24776 QFLN



24777 Q (Turquoise)
24777 QFLN



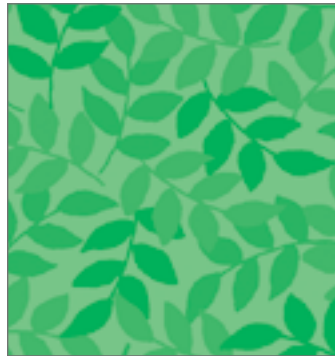
24778 Q (Marine)
24778 QFLN



24779 Q (Deep Ocean)
24779 QFLN



24776 G (Green Mist)
24776 GFLN



24777 G (Spring Green)
24777 GFLN



24778 G (Shamrock)
24778 GFLN



24779 G (Jungle Green)
24779 GFLN



24776 S (Buttercream)
24776 SFLN



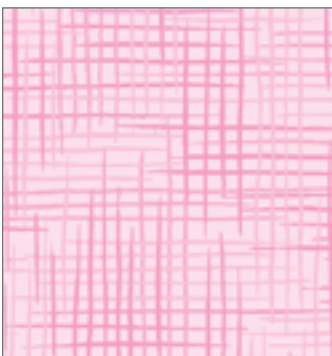
24777 S (Daffodil)
24777 SFLN



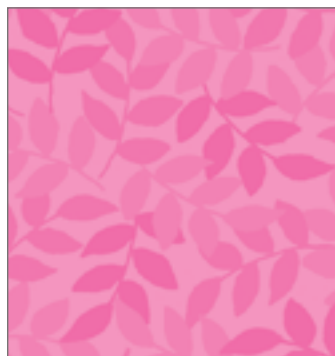
24778 S (Sunflower)
24778 SFLN



24779 S (Marigold)
24779 SFLN



24776 P (Cotton Candy)
24776 PFLN



24777 P (Party Pink)
24777 PFLN



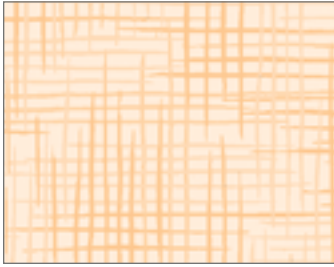
24778 P (Bubble Gum)
24778 PFLN



24779 P (Azalea)
24779 PFLN

Harmony Home Dec

100% Cotton Flat or Double Brushed Flannel. 42/43"
60 x 60. D/R approx. 12 yds.



24776 SA (Maize)
24776 SAFLN



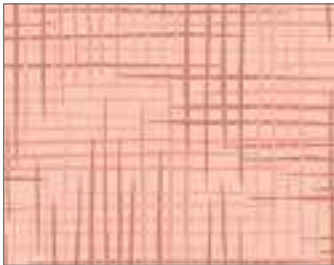
24777 SA (Cornsilk)
24777 SAFLN



24778 SA (Honey)
24778 SAFLN



24779 SA (Amber)
24779 SAFLN



24776 C (Clay)
24776 CFLN



24777 C (Nutmeg)
24777 CFLN



24778 T (Terracotta)
24778 TFLN



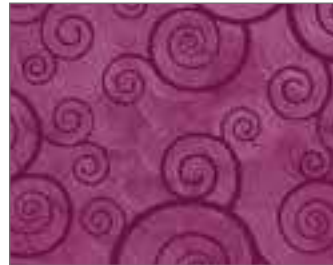
24779 T (Rust)
24779 TFLN



24776 VM (Heather)
24776 VMFLN



24777 VM (Plum Rose)
24777 VMFLN



24778 VM (Plum Velvet)
24778 VMFLN



24779 VM (Plum)
24779 VMFLN



24776 D (Ash Rose)
24776 DFLN



24777 D (Dusty Rose)
24777 DFLN



24778 RT (Paprika)
24778 RTFLN



24779 RT (Brick)
24779 RTFLN



24776 DM (Mauve)
24776 DMFLN



24777 DM (Mulberry)
24777 DMFLN



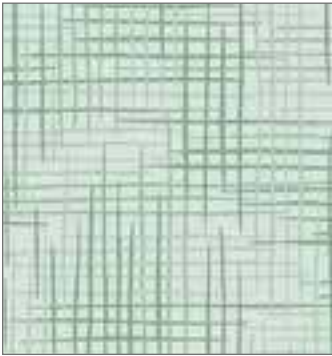
24778 DM (Sangria)
24778 DMFLN



24779 M (Garnet)
24779 MFLN

All designs shown at 100%

In-Stock Fabrics



24776 H (Frosted Pine)
24776 HFLN



24777 H (Spruce)
24777 HFLN



24778 F (Evergreen)
24778 FFLN



24779 F (Forest)
24779 FFLN



24776 GF (Silver Sage)
24776 GFFLN



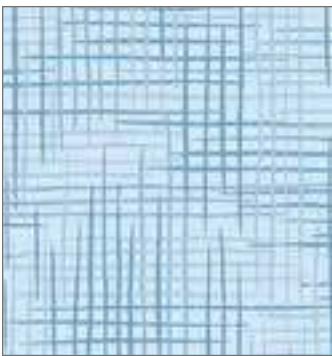
24777 GF (Sage)
24777 GFFLN



24778 GF (Moss)
24778 GFFLN



24779 GF (Olive)
24779 GFFLN



24776 W (Arctic Blue)
24776 WFLN



24777 W (Denim)
24777 WFLN



24778 W (Slate Blue)
24778 WFLN



24779 N (Navy)
24779 NFLN



24776 QB (Blue Lagoon)
24776 QBFLN



24777 QB (Chambray)
24777 QBFLN



24778 QB (Teal)
24778 QBFLN



24779 QB (Prussian Blue)
24779 QBFLN

Harmony Neutrals/Baby

100% Cotton Flat or Double Brushed Flannel. 42/43"
60 x 60. D/R approx. 12 yds.



24776 E (Vanilla)
24776 EFLN



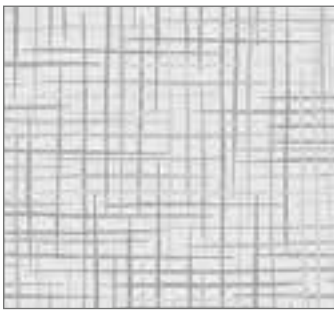
24777 E (Sand)
24777 EFLN



24778 EA (Camel)
24778 EAFLN



24779 EA (Toffee)
24779 EAFLN



24776 K (Ash)
24776 KFLN



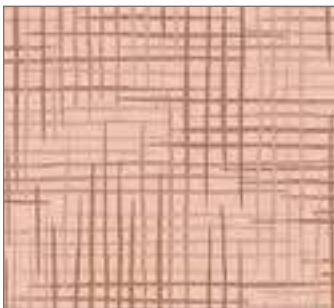
24777 K (Graphite)
24777 KFLN



24778 K (Charcoal)
24778 KFLN



24779 J (Black)
24779 JFLN



24776 A (Wheat)
24776 AFLN



24777 A (Toast)
24777 AFLN



24778 A (Sable)
24778 AFLN

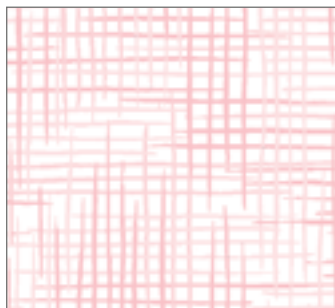


24779 A (Espresso)
24779 AFLN

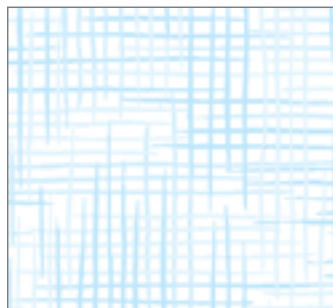
Baby



24776 ZS (Butter)
24776 ZSFLN



24776 ZP (Powder Pink)
24776 ZPFLN



24776 ZB (Cloud Blue)
24776 ZBFLN



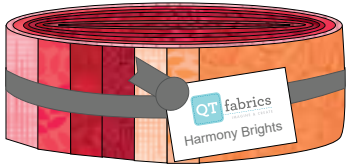
24776 ZH (Soft Green)
24776 ZHFLN

All designs shown at 100%

In-Stock Fabrics



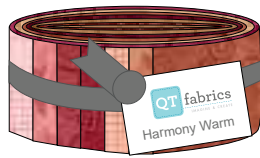
All Harmony Pre-Cuts available in flat cotton or flannel 2½" Strip Sets



Harmony Brights #1
36 SKUs / 40 Strips

**(40) 2½" Strips
Harmony Brights**

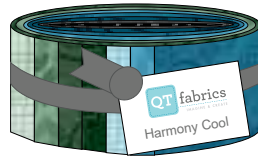
STRIPS HARMCO 6PK01
STRIPS HARMFL 6PK01



Harmony Warm (24) #2

**(24) 2½" Strips
Harmony Warm**

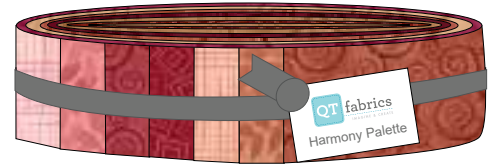
STRIPS HARMCO 6PK02
STRIPS HARMFL 6PK02



Harmony Cool (24) #3

**(24) 2½" Strips
Harmony Cool**

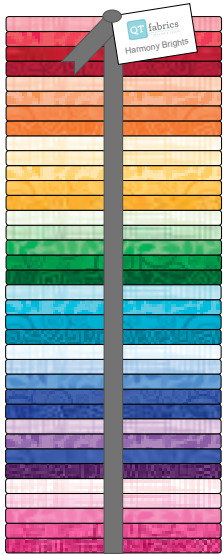
STRIPS HARMCO 6PK03
STRIPS HARMFL 6PK03



Harmony Palette (48) #4
Includes Harmony Cool & Warm

**(48) 2½" Strips
Harmony Palette**

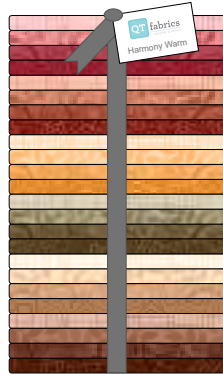
STRIPS HARMCO 6PK04
STRIPS HARMFL 6PK04



Harmony Brights (36) #1

**(36) Fat Quarters
Harmony Brights**

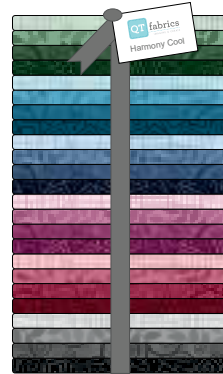
FATQUAR HARMCO 3PKLG1
FATQUAR HARMFL 3PKLG1



Harmony Warm (24) #2

**(24) Fat Quarters
Harmony Warm**

FATQUAR HARMCO 3PKLG2
FATQUAR HARMFL 3PKLG2



Harmony Cool (24) #3

**(24) Fat Quarters
Harmony Cool**

FATQUAR HARMCO 3PKLG3
FATQUAR HARMFL 3PKLG3

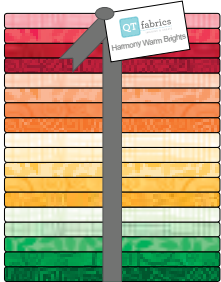


Harmony Combo Set (84) #3
Includes sets 1, 2 & 3

**(84) Fat Quarters
Harmony Combo Set**

FATQUAR HARMCO 3PKLG4
FATQUAR HARMFL 3PKLG4

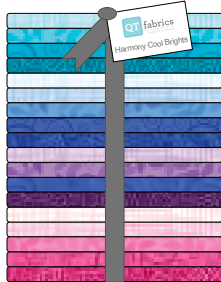
Fat Quarter Small Sets



Harmony
Warm Brights (18) #1

**(18) Fat Quarters
Harmony Warm Brights**

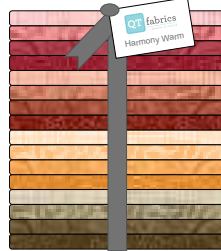
FATQUAR HARMCO 3PKSM1
FATQUAR HARMFL 3PKSM1



Harmony
Cool Brights (18) #2

**(18) Fat Quarters
Harmony Cool Brights**

FATQUAR HARMCO 3PKSM2
FATQUAR HARMFL 3PKSM2



Harmony
Warm (16) #3

**(16) Fat Quarters
Harmony Warm**

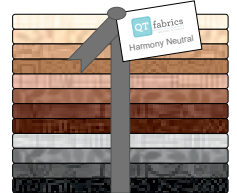
FATQUAR HARMCO 3PKSM3
FATQUAR HARMFL 3PKSM3



Harmony
Cool (20) #4

**(20) Fat Quarters
Harmony Cool**

FATQUAR HARMCO 3PKSM4
FATQUAR HARMFL 3PKSM4



Harmony
Neutral (12) #5

**(12) Fat Quarters
Harmony Neutral**

FATQUAR HARMCO 3PKSM5
FATQUAR HARMFL 3PKSM5

New Prints & Color



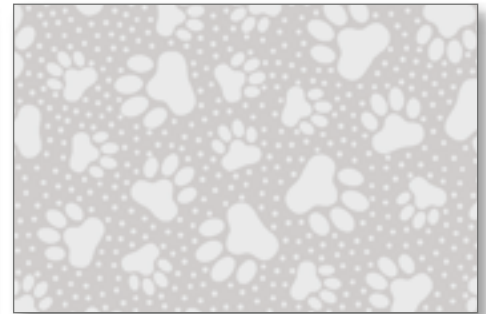
26760 K

Alphabets



26761 K

Musical Notes



26762 K

Paw Prints

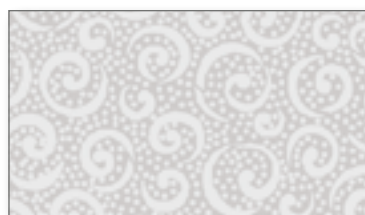
New prints also available in white (Z), cream (E) and black (J)

Everyday Gray Gray/White



21516 K

Stencil Floral



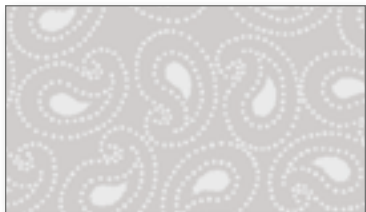
21517 K

Curly Cue



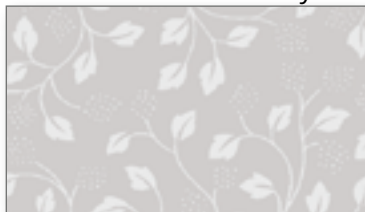
21518 K

Pinwheel Floral



21519 K

Paisley



21520 K

Leaf Vine



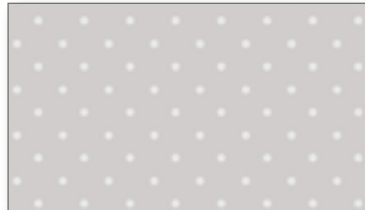
21521 K

Dots



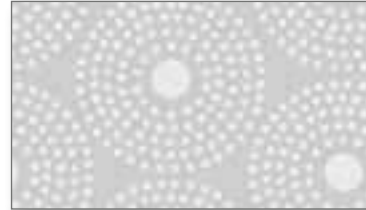
21523 K

Stars



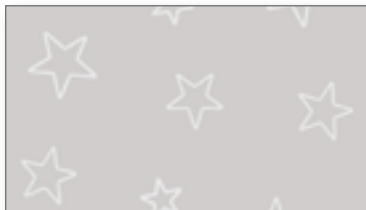
22083 K

Dot



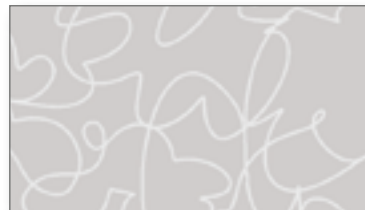
22626 K

Circle Dot



23540 K

Stars



23541 K

Scribble



24600 K

Snowflake



(12) Fat Quarters
Illusions Black
FATQUAR ILLUSB 3PACK



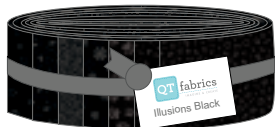
(14) Fat Quarters
Illusions Cream
FATQUAR ILLUSC 3PACK



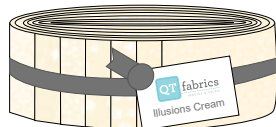
(15) Fat Quarters
Illusions Gray
FATQUAR ILLUSG 3PACK



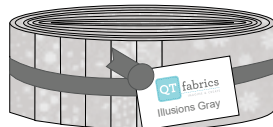
(15) Fat Quarters
Illusions White
FATQUAR ILLUSW 3PACK



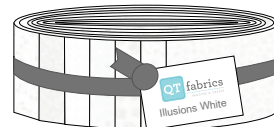
(40) 2 1/2" Strips
Illusions Black
STRIPS ILLUSB 6PACK



(40) 2 1/2" Strips
Illusions Cream
STRIPS ILLUSC 6PACK



(40) 2 1/2" Strips
Illusions Gray
STRIPS ILLUSG 6PACK



(40) 2 1/2" Strips
Illusions White
STRIPS ILLUSW 6PACK

All designs shown at 100%

In-Stock Fabrics



Crisp Whites

White/White



21516 Z Stencil Floral



24600 Z Snowflake



21517 Z Curly Cue



21519 Z Paisley



26760 Z Alphabets



23540 Z Stars



23541 Z Scribble



21523 Z Stars



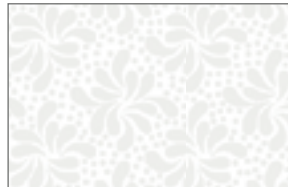
21521 Z Dots



26761 Z Musical Notes



21520 Z Leaf Vine



21518 Z Pinwheel Floral



22083 Z Dot



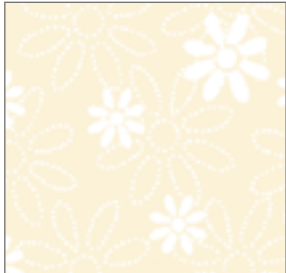
22626 Z Circle Dot



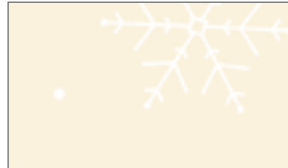
26762 Z Paw Prints

Cozy Creams

White/Ecru



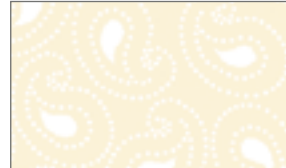
21516 E Stencil Floral



24600 E Snowflake



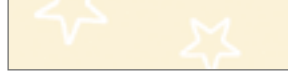
21517 E Curly Cue



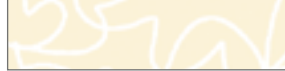
21519 E Paisley



26760 E Alphabets



23540 E Stars



23541 E Scribble



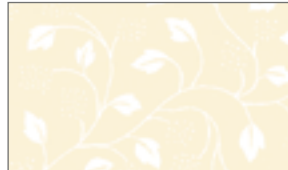
21523 E Stars



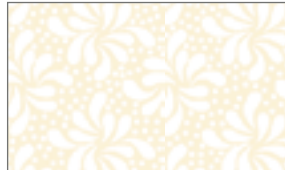
26761 E Musical Notes



21521 E Dots



21520 E Leaf Vine



21518 E Pinwheel Floral



22083 E Dot



26762 E Paw Prints

Black Tie

Black/Charcoal



21516 J Stencil Floral



21517 J Curly Cue



21519 J Paisley



23540 J Stars



26760 J Alphabets



26761 J Musical Notes



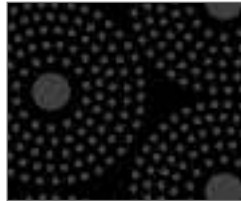
21520 J Leaf Vine



21521 J Dots



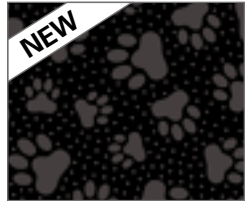
23541 J Scribble



22626 J Circle Dot



21523 J Stars



26762 J Paw Prints

Luminous Lace
SKU 24432 Lace Medallion

100% Cotton. 43/44"
60 x 60. D/R approx. 12 yds.



EF (Cream/Forest)



F (Forest)



EM (Cream/Wine)



M (Wine)



ZN (White/Navy)



N (Navy)

All designs shown at 100%
All designs have metallic

In-Stock Fabrics

QT



EJ (Cream/Black)



J (Black)



ER (Cream/Red)



R (Red)



ZY (White/Royal)



Y (Royal)

Luminous Lace
SKU 24432 Lace Medallion

100% Cotton. 43/44"
60 x 60. D/R approx. 12 yds.

All designs shown at 100%
All designs have metallic

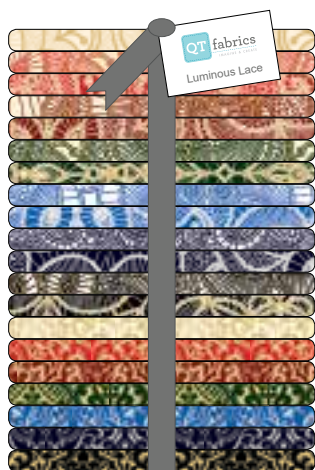


E (Cream)

Luminous Lace
SKU 24433 Chevron Brocade

In-Stock Fabrics

QT



(20) Fat Quarters
Luminous Lace
FATQUAR HOLLAC 3PACK



E (Cream)



R (Red)



M (Wine)



F (Forest)



N (Navy)



Y (Royal)



J (Black)

Lyla Damask
SKU 26106

100% Cotton. 43/44"
60 x 60. D/R approx. 15 yds.



RJ (Red/Black)



OP (Orange/Pink)



CP (Coral/Pink)



SR (Yellow/Red)



ES (Cream/Yellow)



HP (Lime/Pink)



HQ (Lime/Teal)



EQ (Cream/Aqua)



HG (Avocado)



GN (Green/Navy)



YQ (Royal/Aqua)



Q (Teal)

All designs shown at 100%

In-Stock Fabrics



OV (Orange/Fuchsia)



SO (Gold/Orange)



HV (Lime/Fuchsia)



SH (Gold/Olive)



H (Olive)



EH (Cream/Light Green)



HB (Olive/Blue)



HY (Green/Royal)



QH (Jade/Olive)



26106 OV at 50%



VH (Wisteria/Lt. Green)

Metals

100% Cotton, 43/44"
60 x 60. D/R approx. 12 yds.

All designs shown at 100%
All designs have metallic

Gold



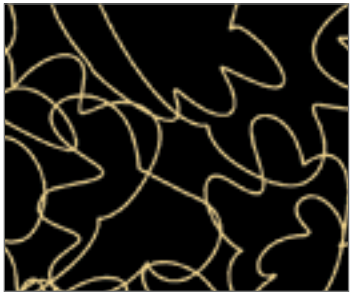
23543 ES (Cream/Gold) Leaf Vine



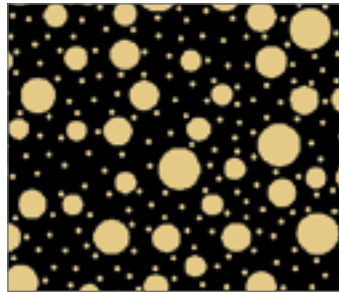
23544 ZS (White/Gold) Stars



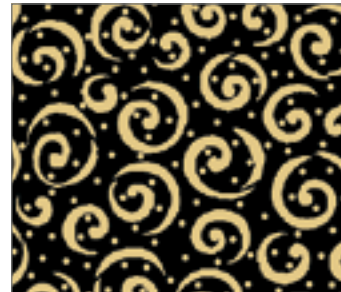
24497 ZS (White/Gold) Snowflake



23542 JS (Black/Gold) Scribble



23539 JS (Black/Gold) Mixed Dots



23538 JS (Black/Gold) Curley Cue



24497 JS (Black/Gold) Snowflake

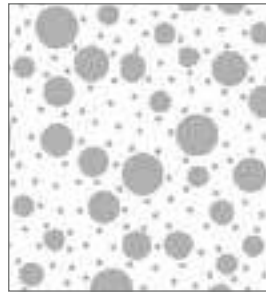
Silver



23538 ZK (White/Silver)
Curley Cue



23543 JK (Black/Silver)
Leaf Vine



23539 ZK (White/Silver)
Mixed Dots



23544 JK (Black/Silver)
Stars

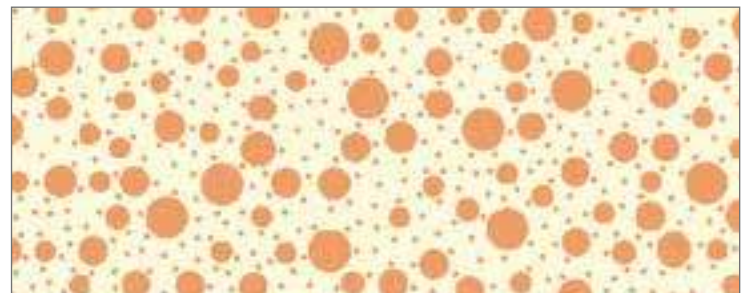


23542 ZK (White/Silver)
Scribble

Copper



23543 EC (Cream/Copper) Leaf Vine



23539 EC (Cream/Copper) Mixed Dots



23538 JC (Black/Copper) Curley Cue



23544 JC (Black/Copper) Stars

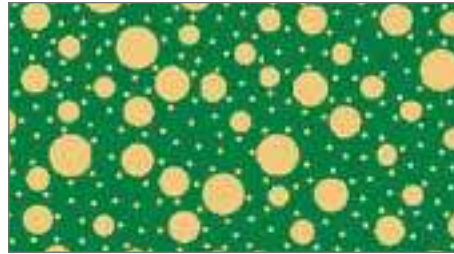


23542 JC (Black/Copper) Scribble

Holiday Brights



23539 Y (Royal/Metallic Silver)Dot



23539 G (Green/Metallic Gold) Dot



23539 R (Red/Metallic Gold) Dot



23544 Y (Royal/Metallic Silver) Stars



23544 G (Green/Metallic Gold) Stars



23544 R (Red/Metallic Gold) Stars

Holiday Classics



23538 N (Navy/Metallic Silver) Scroll



23538 F (Forest/Metallic Gold) Scroll



23538 M (Wine/Metallic Gold) Scroll



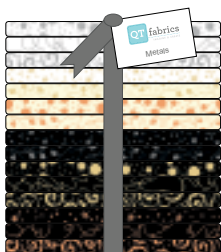
23544 N (Navy/Metallic Silver) Stars



23544 F (Forest/Metallic Gold) Stars



23544 M (Wine/Metallic Gold) Stars



(15) Fat Quarters Metals*

FATQUAR METALS 3Pack
*FQ Bundle does not include
Snowflake designs 24497 ZS & JS



(12) Fat Quarters Holiday Metals

FATQUAR HOLMET 3PACK



(42) 5" Squares Holiday Metals

5" SQ HOLMET 12PACK

Ombre Scrolls
SKU 24174

100% Cotton. 43/44"
60 x 60. D/R approx. 12 yds.



M (Ruby)
*Available in 108" Wide



R (Cherry Red)



PV (Hot Pink)
*Available in 108" Wide



F (Forest)
*Available in 108" Wide



GF (Kelly)
*Available in 108" Wide



G (Spring Green)



GQ (Jade)



BQ (Aqua)



Q (Marine)
*Available in 108" Wide



KZ (Crystal)
*Available in 108" Wide



J (Black)
*Available in 108" Wide



V (Grape)
*Available in 108" Wide



E (Ecru)
*Available in 108" Wide



AK (Taupe)



K (Stone)
*Available in 108" Wide

All designs shown at 100%
 *Selected colors also available in 108" wide

In-Stock Fabrics



P (Pink)
 *Available in 108" Wide



C (Melon)



O (Tangerine)
 *Available in 108" Wide



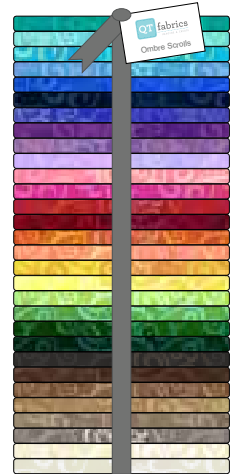
H (Lime)
 *Available in 108" Wide



S (Lemon)
 *Available in 108" Wide



SO (Canary)



**(30) Fat Quarters
 Ombre Scroll**
 FATQUAR OMBRE SCROLL
 3 per Pack



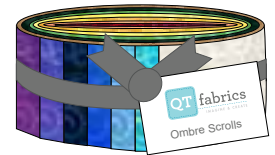
B (Ocean Blue)



Y (Royal)
 *Available in 108" Wide



N (Navy)
 *Available in 108" Wide



**(30) 2 1/2" Strips
 Ombre Scroll**
 STRIPS OMBRE SCROLL
 6 per Pack



W (Ultra Marine)



LV (Wisteria)



L (Lilac)



AS (Camel)



A (Sable)
 *Available in 108" Wide

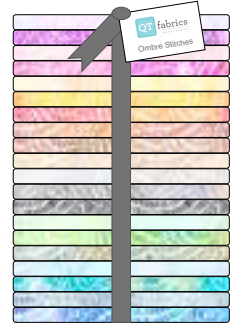


AT (Root Beer)
 *Available in 108" Wide

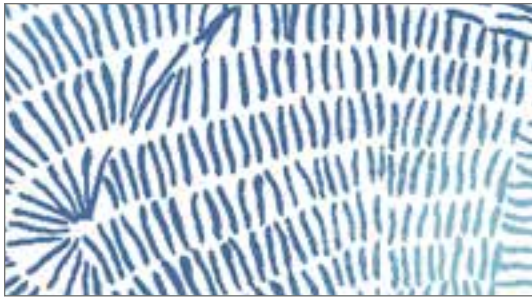
Ombre Stitches

SKU 25974

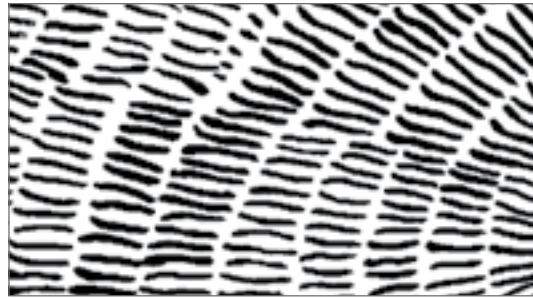
100% Cotton. 43/44"
60 x 60. D/R approx. 12 yds.



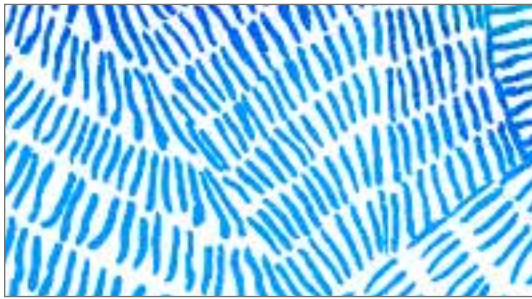
(20) Fat Quarters
Ombre Stitches
FATQUAR OMRBST 3PACK



W (Chambray)



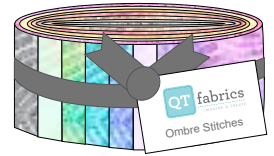
J (Black)



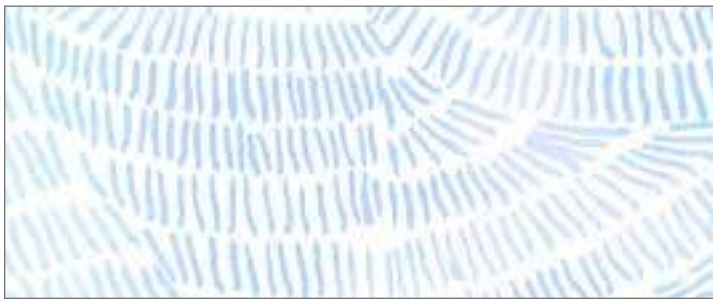
Y (Ultramarine)



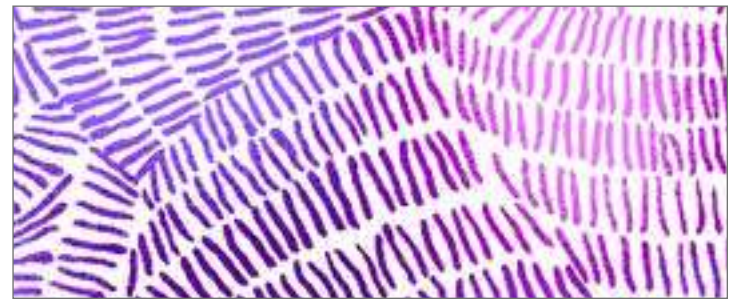
L (Soft Lilac)



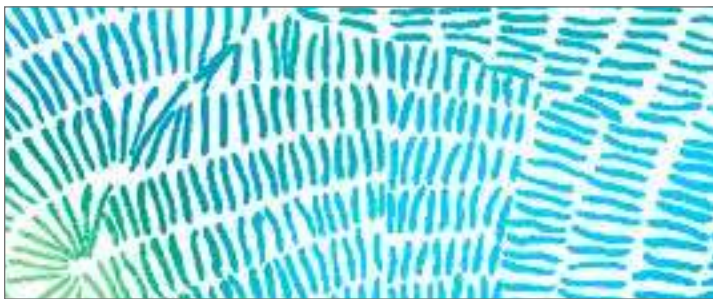
(40) 2 1/2" Strips
Ombre Stitches
STRIPS OMRBST 6PACK



B (Soft Blue)



V (Purple)



Q (Caribbean)



F (Moss)



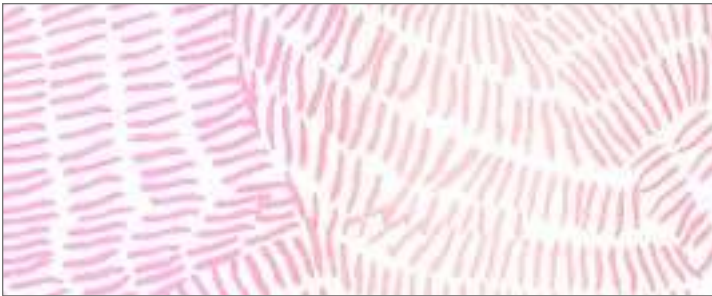
H (Soft Green)



G (Green)

All designs shown at 100%

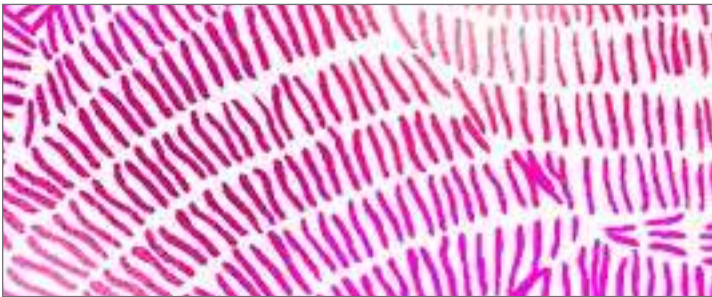
In-Stock Fabrics



P (Soft Pink)



KZ (Light Gray)



VP (Bubble Gum)



K (Gray)



R (Chili)



T (Rust)



SO (Marigold)



E (Straw)



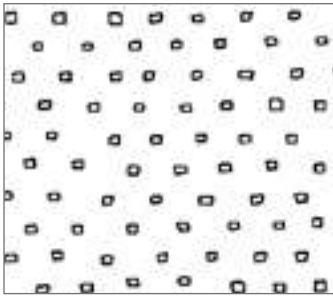
S (Soft Yellow)



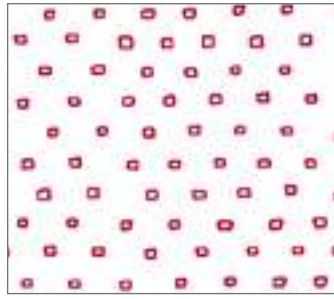
A (Brown)

Pixie Dots
SKU 24299

100% Cotton. 43/44"
60 x 60. D/R approx. 15 yds.



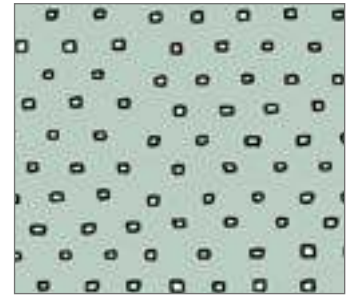
Z (White)



ZR (White/Red)



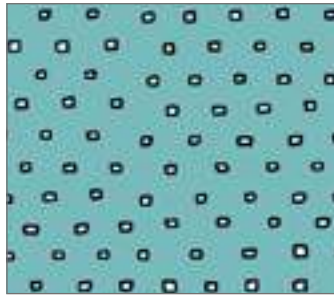
E (Ecru)



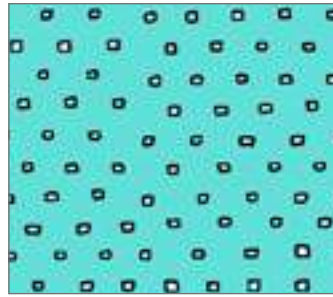
QE (Dusty Aqua)



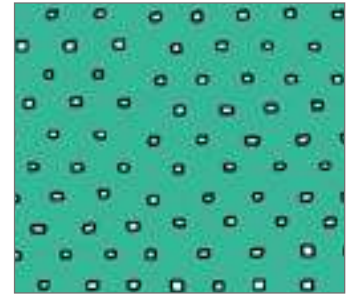
QH (Aqua)



QJ (Dark Aqua)



Q (Turquoise)



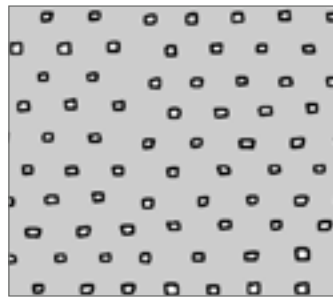
GJ (Spearmint)



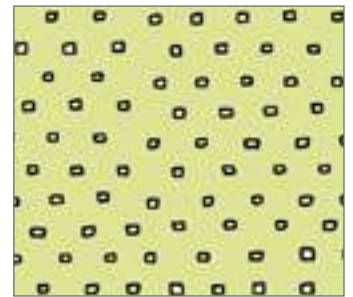
C (Apricot)



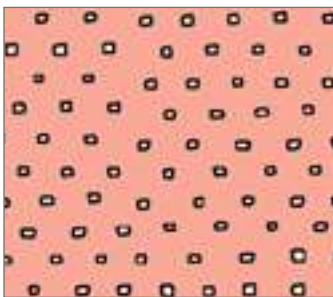
AE (Stone)



KZ (Gray)



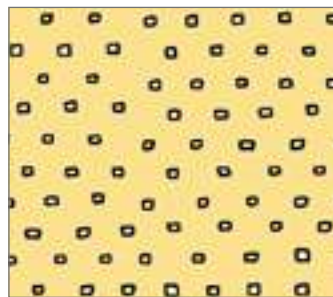
H (Light Green)



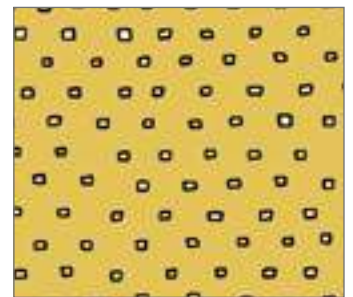
P (Salmon)



A (Dark Khaki)



SZ (Yellow)



S (Gold)



CP (Dark Salmon)



PD (Baby Pink)



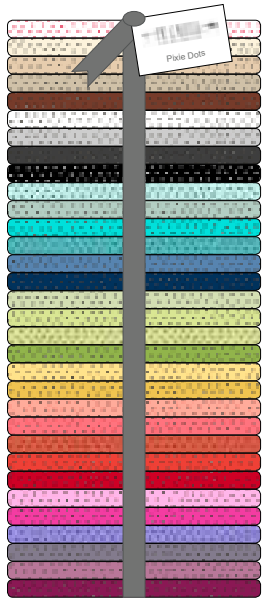
PZ (Bubble Gum)



PV (Hot Pink)

All designs shown at 100%

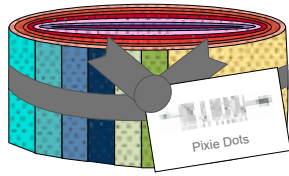
In-Stock Fabrics



**(32) Fat Quarters
Pixie Dots**

FATQUAR PIXIE 3PACK

**FQ Bundle does not include colors 24299 BZ, C, GJ, OS & PD*



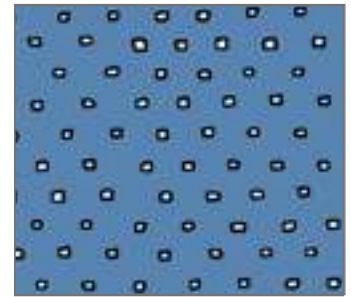
**(40) 2½" Strips
Pixie Dots**

STRIPS PIXIE 6PACK

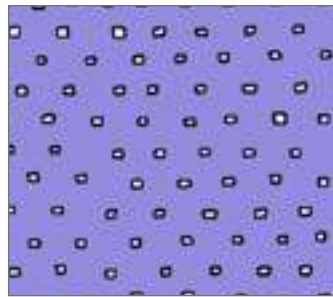
**Roll does not include colors 24299 BZ, C, GJ, OS & PD*



BZ (Baby Blue)



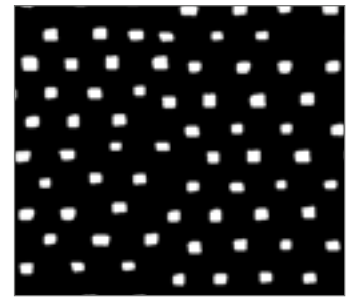
W (Wedgewood)



LV (Lavender)



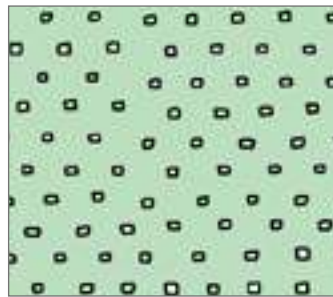
N (Navy)



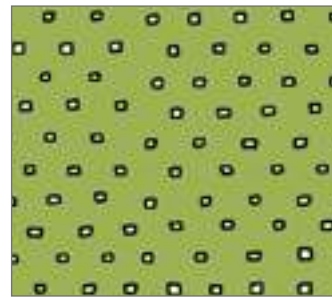
J (Black)



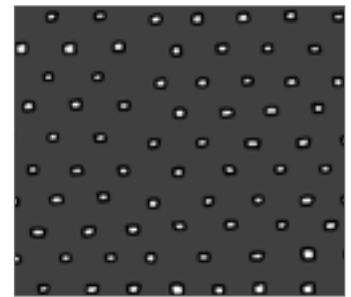
HJ (Green Tea)



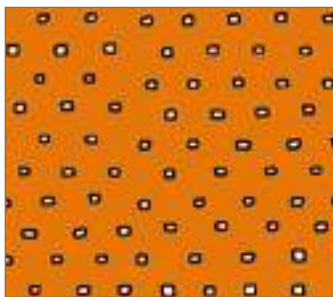
QZ (Seafoam)



GH (Lime)



K (Charcoal)



OS (Pumpkin)



O (Tomato)



RO (Chili)



R (Red)



VJ (Dusty Purple)



L (Lilac)



V (Plum)



AJ (Brown)

Scrollscapes
SKU 24362



100% Cotton. 43/44"
60 x 60. D/R approx. 12 yds.

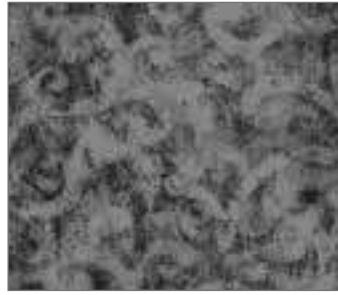
All designs shown at 100%



KE (Stone)



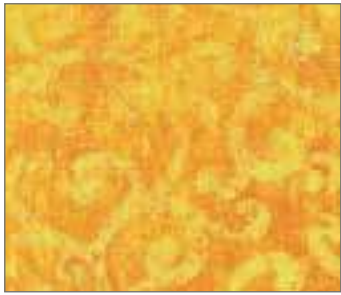
E (Parchment)



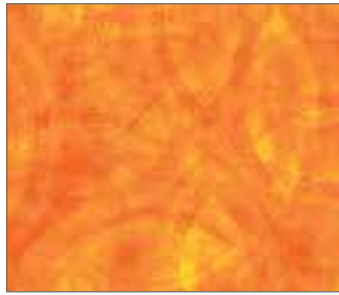
K (Gray)



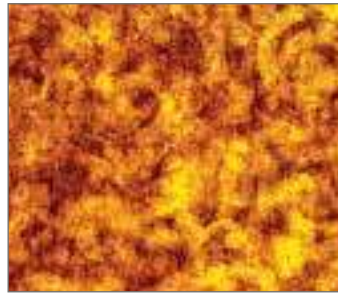
J (Ebony)



S (Sun)



O (Orange)



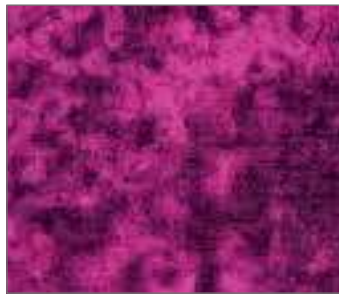
T (Burnt Orange)



AS (Cognac)



D (Wild Rose)



VJ (Magenta)



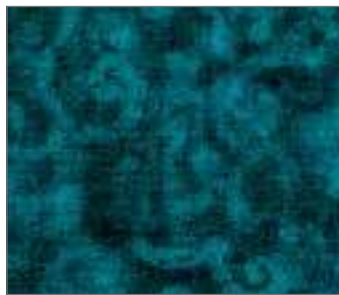
R (Red)



A (Espresso)



Q (Turquoise)



QW (Teal)



G (Moss)



F (Evergreen)



Y (Cobalt)



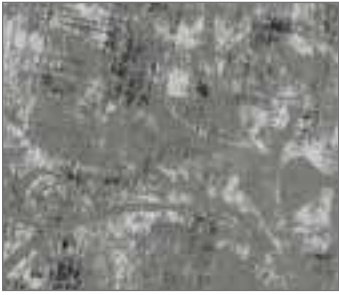
W (Indigo)



L (Crocus)



V (Grape)



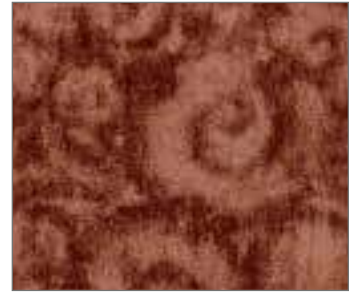
KZ (Smoke)



SA (Honey)



RO (Tomato)



AE (Acorn)



C (Cameo Pink)



PC (Tea Rose)



P (Bubblegum)



PV (Plum Pink)



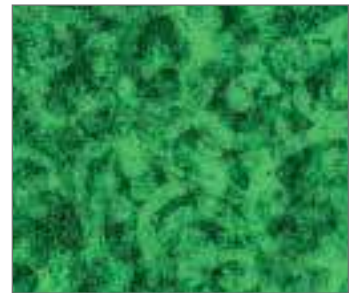
SZ (Maize)



H (Spring Green)



HG (Grass)



FG (Emerald)



BZ (Powder Blue)



B (Ocean)



QY (Lapis)



BY (Bluebell)



QZ (Aqua)



VL (Hyacinth)



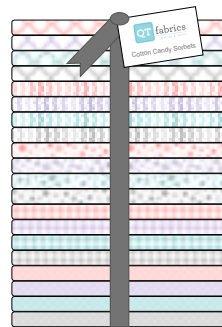
Full repeat shown of 24362 K at 15% - Repeat measures approx. 24" x 44" from selvage to selvage

Sorbets

100% Cotton. 43/44"
60 x 60. D/R approx. 12 yds.



(20) 2½" Strips Sorbets
Cotton Candy
STRIPS SORBCC 12PACK



(20) Fat Quarters Sorbets
Cotton Candy
FATQUAR SORBCC 3PACK

Carnation Pink



23688 P
Geo

Lavender



23688 L
Geo

Aqua



23688 Q
Geo

Yellow



23688 S
Geo



23689 P
Rick Rac



23689 L
Rick Rac



23689 Q
Rick Rac



23689 S
Rick Rac



23690 P
Dots



23690 L
Dots



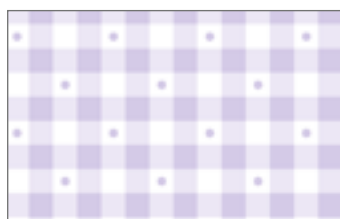
23690 Q
Dots



23690 S
Dots



23691 P
Gingham



23691 L
Gingham



23691 Q
Gingham



23691 S
Gingham



23692 P
Mini Dot



23692 L
Mini Dot



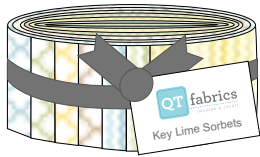
23692 Q
Mini Dot



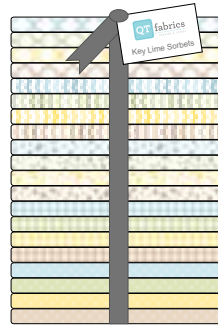
23692 S
Mini Dot

All designs shown at 100%

In-Stock Fabrics



(20) 2½" Strips Sorbets
Key Lime
STRIPS SORBKL 12PACK



(20) Fat Quarters Sorbets
Key Lime
FATQUAR SORBKL 3PACK

Light Fern Green



23688 H
Geo

Cloud Blue



23688 B
Geo

Light Taupe



23688 A
Geo

Soft Gray



23688 K
Geo



23689 H
Rick Rac



23689 B
Rick Rac



23689 A
Rick Rac



23689 K
Rick Rac



23690 H
Dots



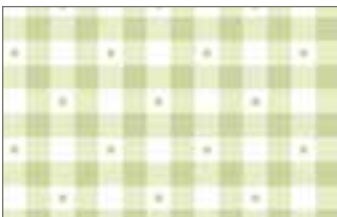
23690 B
Dots



23690 A
Dots



23690 K
Dots



23691 H
Gingham



23691 B
Gingham



23691 A
Gingham



23691 K
Gingham



23692 H
Mini Dot



23692 B
Mini Dot



23692 A
Mini Dot



23692 K
Mini Dot

Sorbet Essentials

100% Cotton. 43/44"
60 x 60. D/R approx. 12 yds.

Red



23688 R
Geo

Orange



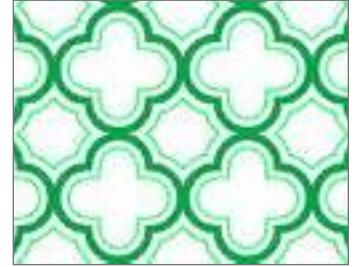
23688 O
Geo

Yellow



23688 SZ
Geo

Green



23688 G
Geo



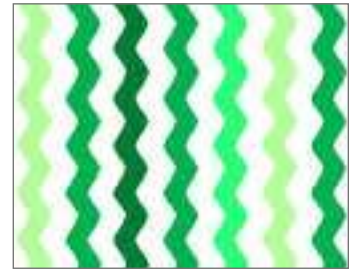
23689 R
Rick Rac



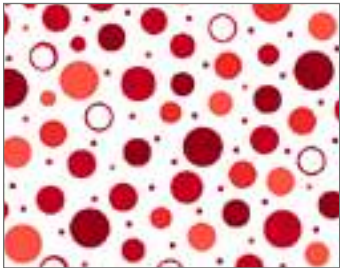
23689 O
Rick Rac



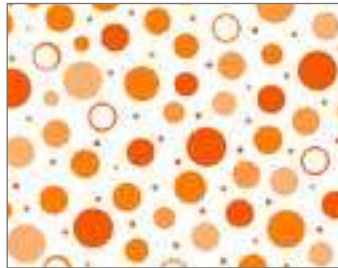
23689 SZ
Rick Rac



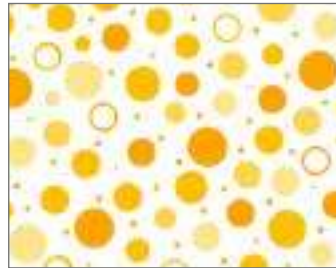
23689 G
Rick Rac



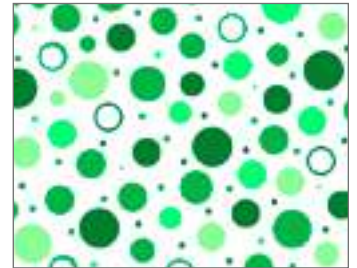
23690 R
Dots



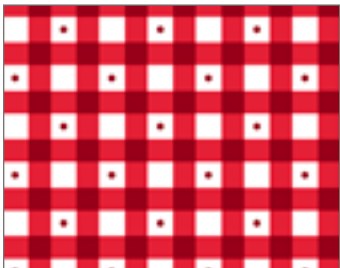
23690 O
Dots



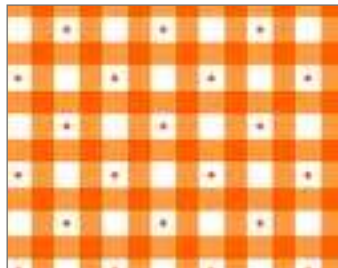
23690 SZ
Dots



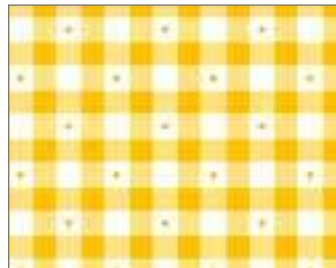
23690 G
Dots



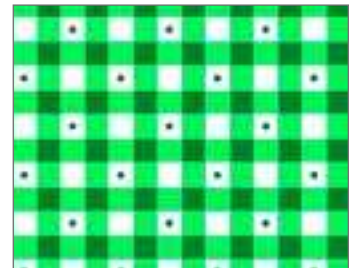
23691 R
Gingham



23691 O
Gingham



23691 SZ
Gingham



23691 G
Gingham



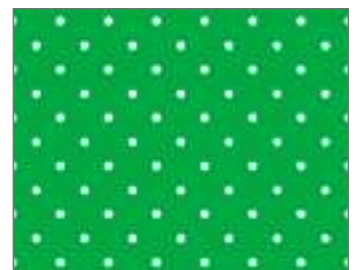
23692 R
Mini Dot



23692 O
Mini Dot



23692 SZ
Mini Dot



23692 G
Mini Dot

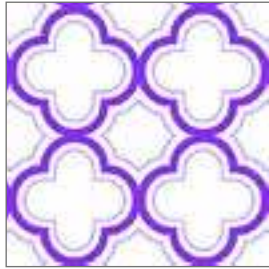


Royal



23688 Y
Geo

Purple



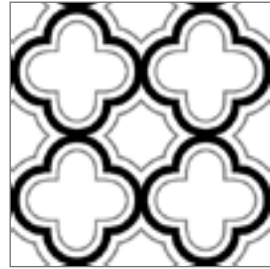
23688 V
Geo

Navy



23688 N
Geo

Black



23688 J
Geo



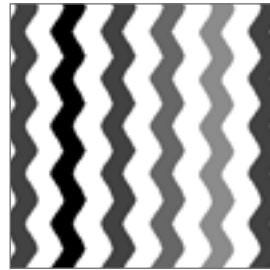
23689 Y
Rick Rac



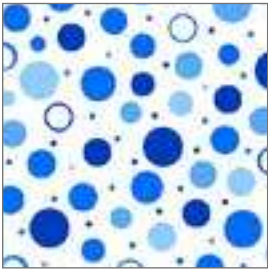
23689 V
Rick Rac



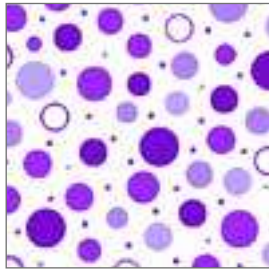
23689 N
Rick Rac



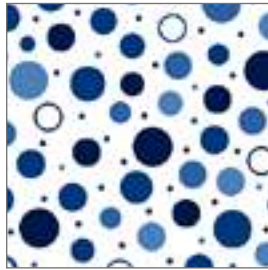
23689 J
Rick Rac



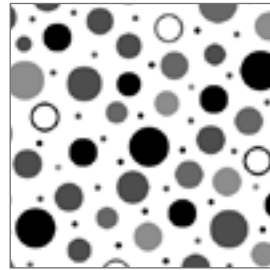
23690 Y
Dots



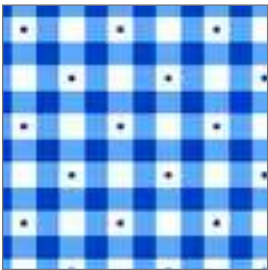
23690 V
Dots



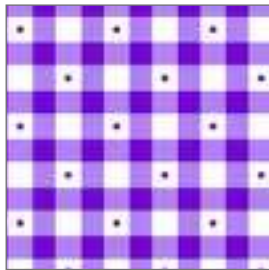
23690 N
Dots



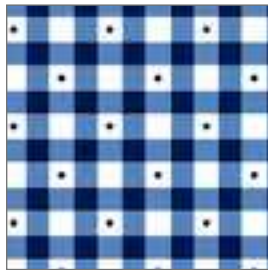
23690 J
Dots



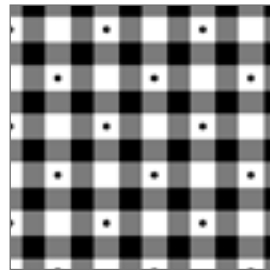
23691 Y
Gingham



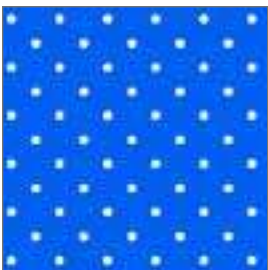
23691 V
Gingham



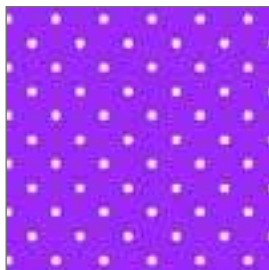
23691 N
Gingham



23691 J
Gingham



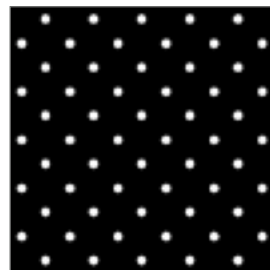
23692 Y
Mini Dot



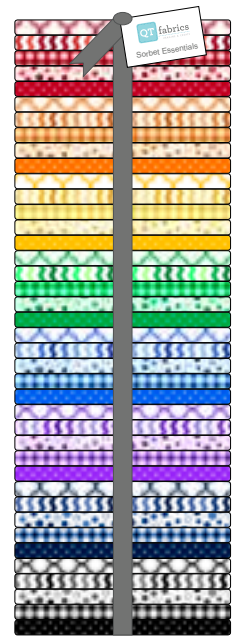
23692 V
Mini Dot



23692 N
Mini Dot



23692 J
Mini Dot



(40) Fat Quarters
Sorbet Essentials
FATQUAR SORBES 3PACK

Temptations
SKU 22542

100% Cotton. 43/44"
60 x 60. D/R approx. 12 yds.



PZ (Powder Pink)



PX (Carnation)



P (Bubblegum)



PV (Azalea)



R (Red)



CZ (Shrimp)



OZ (Clementine)



O (Carrot)



T (Terracotta)



SA (Marigold)



GF (Shamrock)



HE (Avocado)



FG (Olive)



F (Forest)



QK (Viridian)



QH (Aqua)



BK (Chambray)



BZ (Powder Blue)



L (Lilac)



VD (Plum Pink)



AE (Toffee)



AK (Driftwood)



AU (Bark)



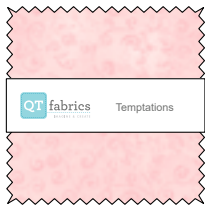
AT (Chestnut)



A (Root Beer)

All designs shown at 100%

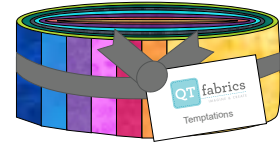
In-Stock Fabrics



**(50) 5" Squares
Temptations**
5"SQ TEMNEW 12 PACK



**Fat Quarter Box
(50) Fat Quarters
Temptations**
PRODUCT BASICS TEMPT



**(50) 2½" Strips
Temptations**
STRIPS TEMNEW 6PACK



M (Crimson)



MV (Merlot)



TK (Marsala)



PC (Strawberry)



C (Melon)



S (Canary)



SZ (Lemon Sorbet)



H (Green Mist)



HS (Lime)



G (Kelly)



W (Slate Blue)



BN (Midnight Blue)



B (Pacific Blue)



Q (Caribbean)



QZ (Turquoise)



VZ (Wisteria)



VP (Pansy)



V (Grape)



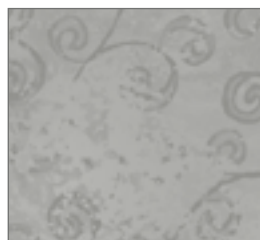
E (Vanilla Cream)



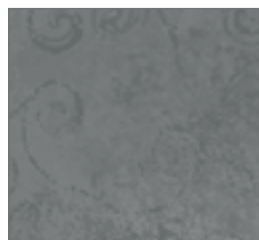
EA (Straw)



KE (Putty)



KZ (Smoke)



K (Steel)

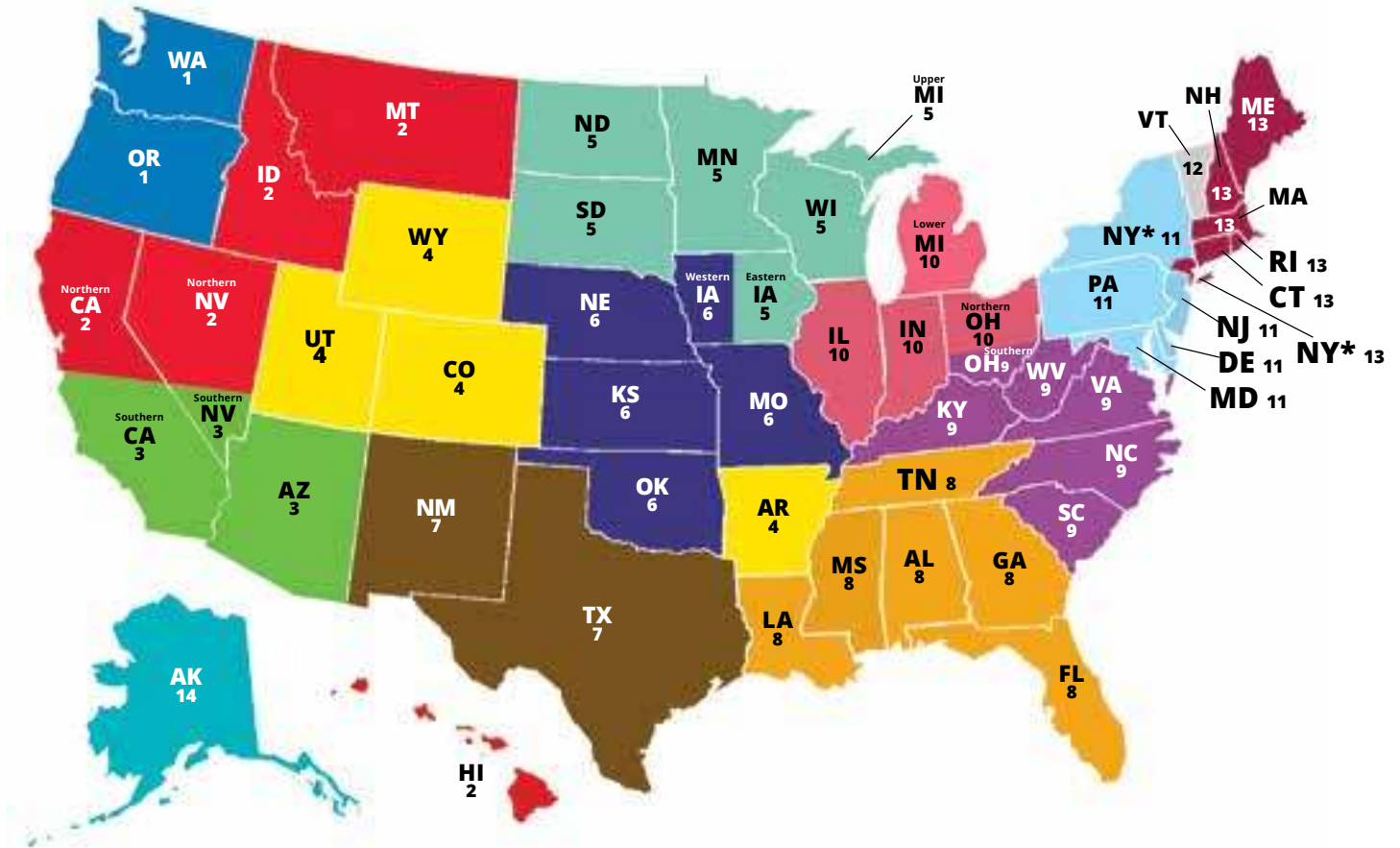


KA (Iron)



JK (Onyx)

REGIONAL SALES MANAGERS



OR, WA

Regional Sales Manager
Martha Manning-Jurey
 Portland, OR
 Cell: 904.226.8020
 Fax: 800.540.7063
 Email: mjurey@cpw.com



1

Northern CA, HI, ID, MT, Northern NV

Regional Sales Manager
Ann Haley
 San Ramon, CA
 Cell: 925.785.8117
 Fax: 800.540.7063
 Email: ahaley@cpw.com



2

AZ, Southern CA, Southern NV

Regional Sales Manager
Barbara Wing
 Hawthorne, CA
 Cell: 310.339.4515
 Fax: 800.540.7063
 Email: bwing@cpw.com



3

AR, CO, UT, WY

Regional Sales Manager
Debra Coffman
 Denver, CO
 Cell: 303.907.8624
 Fax: 800.540.7063
 Email: dcoffman@cpw.com



4

Eastern IA, Upper MI, MN, ND, SD, WI

Regional Sales Manager
Kay Peterson
 Owatonna, MN
 Cell: 507.475.2529
 Fax: 800.540.7063
 Email: kpeterson@cpw.com



5

Western IA, KS, MO, OK, NE

Regional Sales Manager
Coby J. McComas
 Lee's Summit, MO
 Cell: 816.803.8195
 Fax: 800.540.7063
 Email: cmcomas@cpw.com



6

NM, TX

Regional Sales Manager
Tammie Randle
 Bedford, TX
 Cell: 817.946.2975
 Fax: 800.540.7063
 Email: trandle@cpw.com



7

AL, FL, GA, LA, MS, TN

Regional Sales Manager
Mike Flynn
 Atlanta, GA
 Cell: 205.478.7679
 Fax: 800.540.7063
 Email: mflynn@cpw.com



8

DC, KY, NC, Southern OH, SC, VA, WV

Regional Sales Manager
Mark Economy
 Chesterfield, VA
 Cell: 804.304.9016
 Fax: 800.540.7063
 Email: meconomy@cpw.com



9

IL, IN, Lower MI, Northern OH

Regional Sales Manager
Jayne Clark
 Danville, IN
 Cell: 317.509.1312
 Fax: 800.540.7063
 Email: jclark@cpw.com



10

DE, MD, NJ, NY*, PA

Regional Sales Manager
Kevin Driscoll
 Aberdeen, NJ
 Cell: 732.310.0145
 Fax: 800.540.7063
 Email: kdriscoll@cpw.com
 *excluding south & east of Route 287



11

VT

Regional Sales Manager
Ken Gamache
 Cranston, RI
 Cell: 508.948.8119
 Fax: 800.540.7063
 Email: kgamache@cpw.com



12

CT, MA, ME, NH, NY*, RI

Sales Manager
Jesus Montero
 New York, NY
 Cell: 347.968.4427
 Fax: 800.540.7063
 Email: jmontero@cpw.com
 *defined as south & east of Route 287



13

AK

Independent Rep
Janai Comer
 Valdez, Alaska
 Cell: 907.831.1055
 Fax: 800.540.7063
 Email: seiscsafe@cvineternet.net

14

INTERNATIONAL DISTRIBUTORS

If you are a potential wholesale customer and do not see your country or region listed, please contact our International Sales Manager.

EUROPE

International Sales Manager, Europe
Mode-Meter AG
 PO Box 317
 Baselstrasse 22 B
 CH-4125
 Riehen/Basel
Dieter Roesch
Marie Roesch
 Tel: +41-61-643-0560
 Mobile: +49-171-731-2958
 Fax: +41-61-643-0561
 Email: Mode-Meter@mode-meter.ch



AUSTRALIA

XLN Fabrics
 2/21 Binney Rd.
 Kings Park
 NSW 2148
 Australia
 Tel: +61-2-9621-3066
 Fax: +61-2-9622-3074
 Email: allanmurphy@xln.com.au

BRAZIL

Fernando Maluhy CIA Ltda
 Rua Cav. Basilio Jafet, 38
 8.0 Andar Sala 804
 Sao Paulo, SP Brazil 0122020
Mr. Fernando Maluhy
 Tel: +5511-3325-2015
 Fax: +5511-3325-2015
 Email: bernardo@fernandomaluhy.com.br
 Email: fernandomaluhy@fernandomaluhy.com.br

CANADA

International Textiles Ltd.
 8811 Beckwith Rd.
 Richmond, B.C.
 Canada V6X 1V4
 Tel: +604-270-7593
 Fax: +604-270-7598
 Email: intex.sales@shawbiz.ca

CHILE

Comercial Golf SpA
 Independencia 369 local 13
 Independencia 8380000
 Santiago, Chile
Ester Benquis
 Tel: +56-2-6966996
 Email: ebenquis@gmail.com

COLOMBIA

Bodega Decorativa, DECORmoda
Textiles
 Carrera 81 No. 32-330
 Medellin, Antioquia
 Colombia
 Tel: +57-4-576-0570
 Fax: +57-4-250-7617
 www.decormoda.com.co
 E-mail: decormoda@decormoda.com.co
 Contact: Juan Daniel Orrego Pizano
Arte y Manualidades
 Calle 6A #47-79
 Cali, Colombia
America Rivas
 Tel: +57-2-552-3957
 Fax: +572-405-4966
 Email: america362@yahoo.com
Telas y Tonos
 Calle 125 No 21a-39
 Bogota, Colombia
Raphael Ochoa
 Tel: +57-1-215-1555
 Email: administracion125@telasytonos.com

COSTA RICA

El Costurero
 1314-2150 San Jose
 Costa Rica
 Maria Teresa Arteaga
Rocio Flaqué
 Tel: +506-2225-9534
 Fax: +506-2225-0526
 Email: elcosturero@racsa.co.cr

CYPRUS

K. Didonian Textiles
 16 Constantinou
 Kava Fl Street P. code 30,76
 Limassol, Cyprus
Mr. Richard Didonian
 Tel: +357 25 331 739
 Fax: +357 25 387 476
 Email: dingdong@cytanet.com.cy

CZECH REPUBLIC

Cotton Kingdom
 Patchwork & Quilting Fabrics Wholesale
 Svambovee 354
 760 01 Zlin
 Czech Republic
Mr. Libor Kos
 Tel: +420 603235078
 Email: ibor@hotmail.com
Siti Niti
 Ochoz u Brna 624E
 66402
 Czech Republic
Eva Maresova
 Email: info@sitiniti.cz
 Web: www.sitiniti.cz

FRANCE/BELGIUM

PASCAL et BEATRIX
 48 rue Gustave Eiffel
 ZA Albitech
 81000 Albi
Mr Geoffrey Davi
 Tel: +33-05-63-45-22-44
 Mobile: +33-06-80-65-40-11
 Fax: +33-05-63-54-29-66
 Email: contact@pascaletbeatrice.com

GERMANY & AUSTRIA

Zweigart & Sawitzki
 Fronackerstrasse 50
 D-71063 Sindelfingen
 Germany
Mrs. Klotz
Mr. Michael Georgii
 Tel: +49-70-31-795414
 Fax: +49-70-31-795476
 Email: fboudouin@zweigart.de

GUATEMALA

Casa Decora & CIA Ltda
 Primera calle 18-83
 Zona 15
 Local 23 Vista Hermosa II
 Guatemala, Guatemala
Miriam De Palacios
 Tel: +502-2369-6477

HUNGARY

Siti Niti
 Latkovna.cz
 Ochoz u Brna 624E, Czech Republic
 66402
Eva Maresova
 Tel: +420 775 507 410
 Web: www.latkovna.cz
 Email: obchod@latkovna.cz

ITALY

HFT SRL
 Viale Piave 60
 24022 Alzano Lombardo (BG)
 Italy
Tamara Morzenti
 Tel: +39 035 512 450
 Fax: +39 035 515 466
 Web: www.hft.it

JAPAN

Kiyohara & Co., Ltd.
 5-2 Minamikuhoji
 4-Chome, Chuo-Ku
 Osaka, Japan
Kaz Fujii
 Tel: +8166-252-4764
 Fax: +8166-252-4377
 Email: kazuo.fujii@kiyohara.co.jp

Lecien Corporation
 7F Yotsubashi Grand Square,
 1-28-3 Shinmachi,
 Nishi-ku Osaka 550-0013
Mr. Fuminori Ito
 Tel: +06-4390-5526
 Fax: +06-4390-5516

MEXICO

Grupo Parisina
 Venustiano Carranza No. 77
 Col. Centro
 Mexico City, Mexico 06060
Juan Jose Sierra Requejo
 Tel: +525-55512-2353
 Fax: +525-55521-2145

NETHERLANDS

Rinske Stevens Design B.V.
 Costerweg 4C
 4104 AJ CULEMBORG
 Netherlands
 Tel: +31-345788-999
 Fax: +31-847360-013
 Email: info@rinskestevensdesign.com

NEW ZEALAND

Tiffanies Treasures
 PO Box 300-194
 Albany, Auckland
 New Zealand
Mr. Pawan Kalsi
 Tel: +64-9-477-0155
 Fax: +64-9-476-7240
 Email: info@tiffaniestreasures.co.nz

PUERTO RICO

Cabrera Marketing Co.
 #95 Calle La Cambija Ste. 7
 Bayamon, P.R. 00961
 Noel Cabrera
 Tel: +787-787-7890 or 778-7875
 Fax: +787-269-6982
 Email: cabreramarkpr@gmail.com

J. Pica & Co, Inc(Tiendas Capri)
 Calle A. Esq. Escorial
 Urb. Industrial Mario Julia
 Puerto Nuevo, PR 00920
Jose Acosta
 Tel: +787-793-7575
 Fax: +787-793-0668
 Email: jacosta@jpica.com

RUSSIA

Gela LTD
 141400, Vladenije 13B
 Vashutinskoje shosse
 Chimki, Moscow area
 Russia
Anton Shcherbakov
 Tel: +74 95 742 50 43
 Fax: +74 95 742 80 70
 Web: www.gela.ru
 Email: anton@gela.ru

SAUDI ARABIA

Al Zamil Stores
 PO Box 217
 Al Khobar 31952, Saudi Arabia
Mr. Azuver Saleem
 Tel: +966 3 864 1919
 Fax: +966 3 864 9190
 Email: Zamix@sahara.com.sa

SCANDINAVIA

Adlico Textile Aps.
 Merkurvej 2
 7430 Ikast
 Denmark
Mr. Thomas Eriksen
Mr. Jon Christensen
 Tel: +45 978 625 25
 Fax: +45 978 625 24
 Mobile: +45 299 261 08
 Handy: +49 151 616 048 71
 Email: jon@adlico.dk
 Web: http://www.adlico.dk

SINGAPORE

Sing Mui Heng (PTE) Ltd
 315 Outram Road #05-09 Tan Bon Liat
 Building
 Singapore 169074
Sim Piah Hui
 Tel: +65-6221-9209
 Fax: +65-6223-4884
 Email: mgt@singmuiheng.com

SLOVAKIA

Daša Kozmárová - Bubuláková
 Lužná 2320/6
 Šafa 927 05
 www.bubulakovo.sk
 www.bubulakovo.cz
 www.bubulakovo.hu

SPAIN/PORTUGAL

ALBA Patchwork S.L.
 C. Orient, 12
 E-43204 Reus
 Tarragona, Spain
Sra. Victoria Alba
 Tel: +34-977-77-20-21
 Fax: +34-977-77-20-21
 Email: albapatch@albapatch.com

SWITZERLAND

Mode-Meter AG
 PO Box 317
 Baselstrasse 22 B
 CH-4125
 Riehen/Basel
Dieter Roesch
 Tel: +41-61-643-0560
 Mobile: +49-171-731-2958
 Fax: +41-61-643-0561
 Email: Mode-Meter@mode-meter.ch

Cotton & Color
 Inzlingerstrasse 279
 CH4125 Riehen
Astrid Oberhauser
 Tel: +41-61-641-9770
 Email: info@cotton&color.com

J. GASSER & CO. AG
 Industriestrasse 4
 CH - 4658 Däniken
Toni Peier
 Tel: +41 62 288 90 82
 Fax: +41 62 288 90 85
 Web: http://www.gasser-daniken.ch

TAIWAN

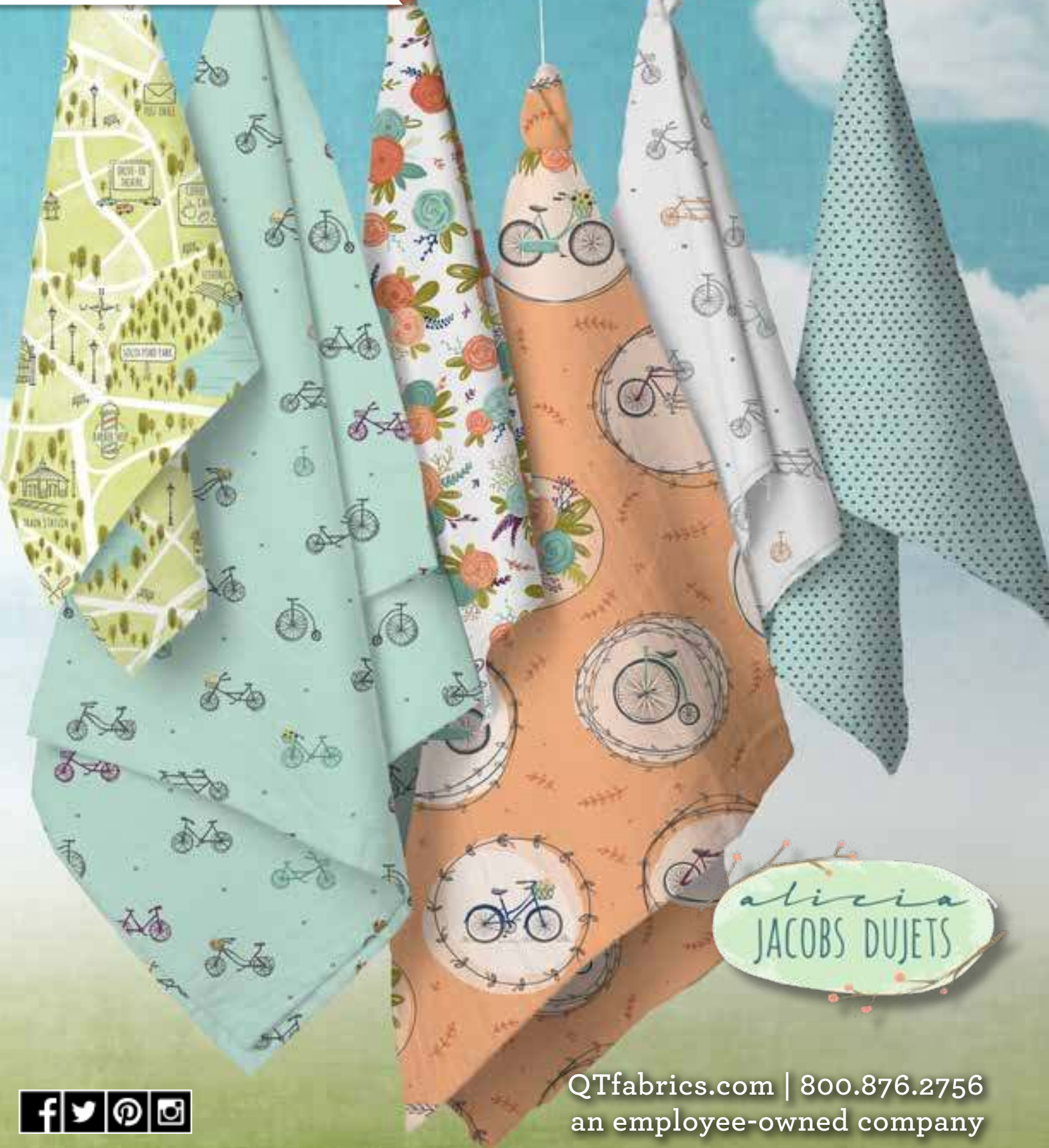
Taiwan Cheer Champ Co., Ltd
 11th Fl., Universal Center No. 175, Sec. 1
 Tatung Rd.,
 Hsi Chih, New Taipei City 221, Taiwan
 (R.O.C)
Joyce Yen
 Tel: +886-2-26498555#372
 Fax: +886-2-26498897
 Email: joyce@cces.com.tw

Wood & Cloth
 93 Nantien St.
 Kaoshiung City, Taiwan
 R.O.C.
Elaine Liu
 Tel: +886-7-3303718
 Fax: +886-7-5317916
 Email: woodandcloth@gmail.com

UNITED KINGDOM & IRELAND

Behrens Fabrics
 Centrepoint
 Marshall Stevens Way
 Trafford Park
 Manchester
 M17 1PP
Mr. Duncan Hough
 Tel: +44-161-872-1444
 Fax: +44-161-872-8002
 Mob: 07808 786 060
 Email: dthough@behrens.co.uk

INK & ARROW
FOR QT FABRICS



alicia
JACOBS DUJETS



QTfabrics.com | 800.876.2756
an employee-owned company