



Andalusia

by *Monica Paruta*



Elegance, charme, energy, Monica's Canvases seduce you at first sight. Inspired to Andalusia, dedicated to Mixed Media lovers who enjoy to work with pastes and colours. Follow Monica on her Facebook lives to discover all the secrets of the artist.

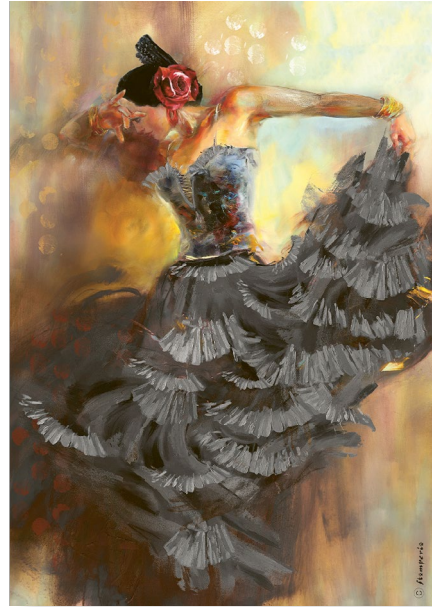




Rice Paper A4



DFSA4630



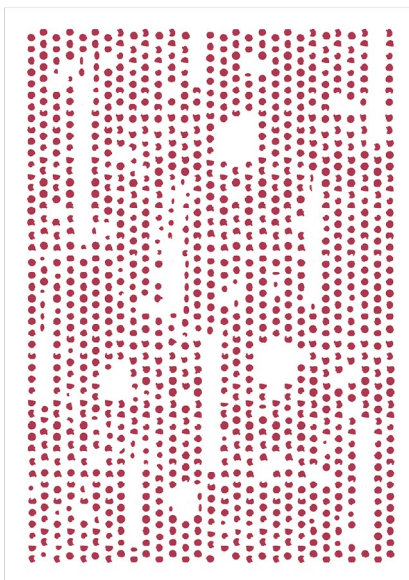
DFSA4631



DFSA4632



DFSA4633

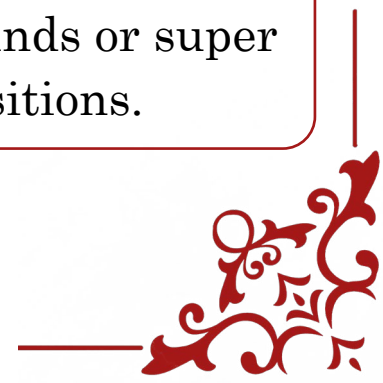


Stencil

21x29.7

KSG480

The papers and the stencils are designed to match and to create backgrounds or super positions.





Monica Paruta

Selection

Allegro  water based
KALKIT11 60 ML



KAL50 OLD IVORY KAL01 METALLIC GOLD KAL21 CHOCOLATE KAL05 CARDINAL RED KAL109 INDIAN TURQUOISE KAL03 BLACK



Glamour Sparkles



K3GG14
SPARKLES 40GR.
SPARKLING RED

Sparkles are very reflective and shining because they are made of glass, their colours are matching the Glamour line and the new trendy paper Collections.

Cerantica

CerAntica is a thick wax giving a metallic effect. Once it is applied it is not removable. CerAntica is ideal for highlighting embossed elements. It can be spread using a cloth or a brush. The tools used during the work should be cleaned with solvent.



K3P15M
ANCIENT WAX
BLACK SILVER

Soft Clay

Extra light, soft, white colour modeling Clay. It can be engraved, impressed by stamps and worked to create 3D decorations. Air-dry. Drying time: 24h according to thickness.



K3P58
WHITE

Cracklé Paste

The special formula of one-component cracklé paste, now also in the metallic version, allows you to quickly enrich any project. The cracks are formed in about 6-8 hours. With the help of the hairdryer the drying time is reduced to 20 minutes. Suitable for porous surfaces.



K3P63
ARCTIC SNOW 100 ML.
WHITE

Pasta Scultura

Pasta Scultura white. Water-based. Contains natural fibers to create a very natural volume. It can be colored with acrylic and Aquacolor.



K3P52
150 ML.

