

# Belle



Color Blends 23528 LB



Color Blends 23528 LZ



Color Blends 23528 G



Project from Lazy Girl Designs: Claire Handbag

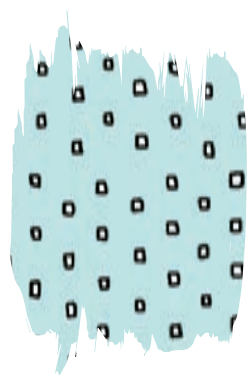


Project from QT Fabrics: Envelope Pillow





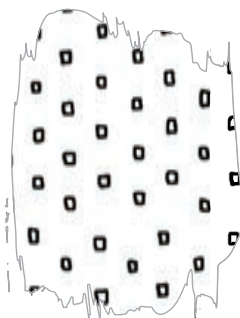
# IN DEEP SHIP



Pixie Dots 24299 QH



Pixie Dots 24299 A



Pixie Dots 24299 Z



Project from Indygo Junction: The Shopper



Project from Lazy Girl Designs: Margo Handbag



Project from Serendipity Studio: Sally Shirtdress



# Jungle Buddies



Project from Lazy Girl Designs: Sweetpea Pod and Fobio Key Fob



Project from Ink & Arrow Fabrics: Baby Blocks



Images are for inspiration only unless otherwise noted. Similar projects can be found online.



# THALIA

Blue Colorway

**Pattern Name: Candice Bag**  
**Pattern Number: LGD130**  
**Retail Price: \$12.00**

Custom pattern covers are not available  
12 patterns minimum for wholesale orders

Patterns can also be ordered direct:  
[www.lazygirldesigns.com](http://www.lazygirldesigns.com)  
(614) 794-9939  
[patterns@lazygirldesigns.com](mailto:patterns@lazygirldesigns.com)

Distributors:  
Checker Distributors, Brewer


Designed by: Lazy Girl Designs  
Approximate Size: 11" x 11½" x 4½"

Inside Pockets



(not shown)



KIT CALCULATIONS		
<b>BLUE COLORWAY</b>	12 KITS	
SKU: P36252 ALL 	YARDS	BOLTS
Feature Fabric 26382 N	¾	1
Front of Bag, Front Pocket Lining 26385 EQ	⅔	1
Lining 26383 N	½	1
Inside Pockets 26106 YQ	½	1
Approx. TOTAL YARDS IN PROJECT: 2½		

**Additional Materials Needed:**

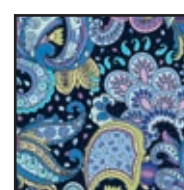
- Fusible Fleece/Batting: ⅔ yd Dreamy Fusible Fleece SLG106 from Lazy Girl Designs or other fusible, medium loft, poly (45" wide)
- Interfacing for Lining: 1 yd Face-It Firm fusible (20" wide) medium/heavy weight interfacing from Lazy Girl Designs SLG104 (or ⅔ yd of 45" wide from another brand)
- Interfacing for Pockets: 1½ yds Face-It Soft (22") fusible lightweight interfacing from Lazy Girl Designs SLG103, (or ¾ yd if 45" wide from another brand)
- Zipper: 20" or longer, polyester all-purpose only (Do not use a metal or sport-weight zipper.)
- 'D' Rings: Four 1" rings (Clover item #9538 shown)
- Optional Bag Support: Bag-E-Bottom Size A (#LGD500) from Lazy Girl Designs
- Optional Zipper Pull Decoration: 8-12" of ¼" grosgrain ribbon and beads/button



26382 N



26385 EQ



26383 N  
inside lining



26106 YQ  
inside pockets  
(not shown)

Thalia complete Collection includes 5 Prints / 12 Bolts

See reverse side for additional colorway



# THALIA

Pink Colorway

**Pattern Name: Candice Bag**  
**Pattern Number: LGD130**  
**Retail Price: \$12.00**

Custom pattern covers are not available  
12 patterns minimum for wholesale orders

Patterns can also be ordered direct:  
[www.lazygirldesigns.com](http://www.lazygirldesigns.com)  
(614) 794-9939  
[patterns@lazygirldesigns.com](mailto:patterns@lazygirldesigns.com)

Distributors:  
Checker Distributors, Brewer


Designed by: Lazy Girl Designs  
Approximate Size: 11" x 11½" x 4½"



Inside Pockets



(not shown)

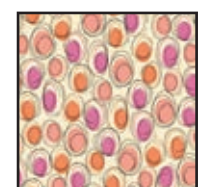
KIT CALCULATIONS		
<b>PINK COLORWAY</b>		12 KITS
SKU: P36253 ALL 	YARDS	BOLTS
Feature Fabric 26382 E	¾	1
Front of Bag, Front Pocket Lining 26385 EC	⅔	1
Lining 26383 C	½	1
Inside Pockets 26106 OP	½	1
Approx. TOTAL YARDS IN PROJECT: 2½		

**Additional Materials Needed:**

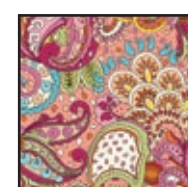
- Fusible Fleece/Batting: ⅔ yd Dreamy Fusible Fleece SLG106 from Lazy Girl Designs or other fusible, medium loft, poly (45" wide)
- Interfacing for Lining: 1 yd Face-It Firm fusible (20" wide) medium/heavy weight interfacing from Lazy Girl Designs SLG104 (or ⅔ yd of 45" wide from another brand)
- Interfacing for Pockets: 1½ yds Face-It Soft (22") fusible lightweight interfacing from Lazy Girl Designs SLG103, (or ¾ yd if 45" wide from another brand)
- Zipper: 20" or longer, polyester all-purpose only (Do not use a metal or sport-weight zipper.)
- 'D' Rings: Four 1" rings (Clover item #9538 shown)
- Optional Bag Support: Bag-E-Bottom Size A (#LGD500) from Lazy Girl Designs
- Optional Zipper Pull Decoration: 8-12" of ¼" grosgrain ribbon and beads/button



26382 E



26385 EC



26383 C  
inside lining



26106 OP  
inside pockets  
(not shown)

Thalia complete Collection includes 5 Prints / 12 Bolts

See reverse side for additional colorway





Blue Colorway



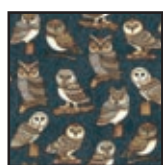
(not shown)

Front

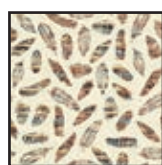
Back

Designed by: Lazy Girl Designs  
Approximate Size: 10 1/4" x 9 1/4" x 4"

KIT CALCULATIONS		
BLUE COLORWAY		12 KITS
SKU: P3629 ALL 	YARDS	BOLTS
Cover Fabric 1 26528 Q	1 FQ	1
Cover Fabric 2 26530 E	1 FQ	1
Outside Pocket 26532 Q	1 FQ	1
Lining 26529 A	1/2	1
Inside Pockets 26531 Q	1/2	1
Approx. TOTAL YARDS IN PROJECT: 1 3/4		
Additional Materials Needed:		
• Fusible Fleece/Batting: 1/2 yd Dreamy Fusible Fleece SLG106 from Lazy Girl 45" wide		
• Interfacing: 1 yd Face-It Firm SLG104 medium/heavy weight fusible interfacing from Lazy Girl 20" wide. (Or 1/2 yd of 45" wide from another brand)		
• Optional Bag Support: Bag-E-Bottom Size F from Lazy Girl LGD505		



26528 Q



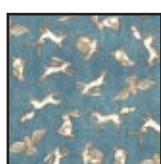
26530 E



26532 Q



26529 A



26531 Q  
inside pockets

**Pattern Name: Claire Handbag**  
**Pattern Number: LGD125**  
**Retail Price: \$10.00**

Custom pattern covers are not available  
12 patterns minimum for wholesale orders

Patterns can also be ordered direct:  
[www.lazygirldesigns.com](http://www.lazygirldesigns.com)  
(614) 794-9939  
[patterns@lazygirldesigns.com](mailto:patterns@lazygirldesigns.com)

Distributors:  
Checker Distributors, Brewer

Where the Wise Things Are complete Collection includes 6 Prints / 17 Bolts

See reverse side for additional colorway





Beige Colorway



Inside Pockets



(not shown)

Front

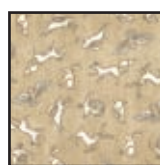
Back

Designed by: Lazy Girl Designs  
Approximate Size: 10 1/4" x 9 1/4" x 4"

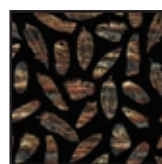
KIT CALCULATIONS		
BEIGE COLORWAY		12 KITS
SKU: P36291 ALL	YARDS	BOLTS
		
Cover Fabric 1 26529 A	1 FQ	1
Cover Fabric 2 26531 E	1 FQ	1
Outside Pocket 26530 J	1 FQ	1
Lining 26528 J	1/2	1
Inside Pockets 26532 J	1/2	1
<i>Approx. TOTAL YARDS IN PROJECT: 1 3/4</i>		
Additional Materials Needed:		
• Fusible Fleece/Batting: 1/2 yd Dreamy Fusible Fleece SLG106 from Lazy Girl 45" wide		
• Interfacing: 1 yd Face-It Firm SLG104 medium/heavy weight fusible interfacing from Lazy Girl 20" wide. (Or 1/2 yd of 45" wide from another brand)		
• Optional Bag Support: Bag-E-Bottom Size F from Lazy Girl LGD505		



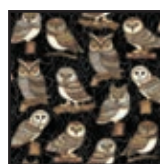
26529 A



26531 E



26530 J



26528 J



26532 J  
inside pockets

**Pattern Name: Claire Handbag**  
**Pattern Number: LGD125**  
**Retail Price: \$10.00**

Custom pattern covers are not available  
12 patterns minimum for wholesale orders

Patterns can also be ordered direct:  
[www.lazygirldesigns.com](http://www.lazygirldesigns.com)  
(614) 794-9939  
[patterns@lazygirldesigns.com](mailto:patterns@lazygirldesigns.com)

Distributors:  
Checker Distributors, Brewer

Where the Wise Things Are complete Collection includes 6 Prints / 17 Bolts


See reverse side for additional colorway



## HOURGLASS QUILT FEATURING TIGER PANEL



Quilt Size: 58½" x 65½"  
Designed by: Cyndi Hershey

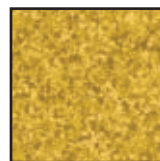
KIT CALCULATIONS		
HOURGLASS QUILT		12 KITS
Size: 58½" x 65½" SKU: P36271 ALL 	YARDS	BOLTS
26438 X (one 36" panel)	1	1
23528 AX* Color Blends II	¾	1
23528 SK* Color Blends	¾	1
23528 A* Color Blends (also binding)	1¼	2
22626 J* Illusions	2¼	3
23528 AX (backing only)	3½	4
*Color Blends & Illusions based on 12 yd bolts		
Approx. TOTAL YARDS IN QUILT: 5¼ (Total yardage does not include suggested backing)		
Number of bolts is based on continuous cuts		



26438 X  
36" panel



23528 AX  
Color Blends II  
also backing



23528 SK  
Color Blends



23528 A  
Color Blends  
also binding



22626 J  
Illusions



Note: Yardage amounts shown are calculated based on standard editorial guidelines and feature commonly used cuts. Please refer to the cutting information for the exact size of each piece. You will want to base your kit fee on the piece cuts rather than the full yardage amount. As always, we recommend that you make a shop sample prior to creating any kit.

Please note that these yardage amounts are the designer's estimates only. Some changes may occur when the project instructions are written.



## HOURGLASS QUILT FEATURING TIGER PANEL



Quilt Size: 58½" x 65½"  
Designed by: Cyndi Hershey



## WAVELENGTH QUILT FEATURING WOLF PANEL



Quilt Size: 50½" x 56½"  
Designed by: Cyndi Hershey

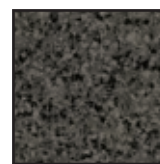
KIT CALCULATIONS		
<b>WAVELENGTH QUILT</b>	12 KITS	
Size: 50½" x 56½" SKU: P36272 ALL 	YARDS	BOLTS
26436 K (one 36" panel)	1	1
23528 EA* Color Blends	½	1
23528 KJ* Color Blends	7/8	1
23528 AK* Color Blends (also binding)	1¼	2
23528 AK* Color Blends (backing only)	3½	4
<i>*Color Blends based on 12 yd bolts</i>		
<i>Approx. TOTAL YARDS IN QUILT: 35½</i> (Total yardage does not include suggested backing)		
<i>Number of bolts is based on continuous cuts</i>		



26436 K  
36" panel



23528 EA  
Color Blends



23528 KJ  
Color Blends  
also binding



23528 AK  
Color Blends  
also backing



*Note: Yardage amounts shown are calculated based on standard editorial guidelines and feature commonly used cuts. Please refer to the cutting information for the exact size of each piece. You will want to base your kit fee on the piece cuts rather than the full yardage amount. As always, we recommend that you make a shop sample prior to creating any kit.*

*Please note that these yardage amounts are the designer's estimates only. Some changes may occur when the project instructions are written.*

**See reverse**



## WAVELENGTH QUILT FEATURING WOLF PANEL



Quilt Size: 50½" x 56½"  
Designed by: Cyndi Hershey





Quilt Size: 67½" x 97½"  
Designed by: Janet Wecker-Frisch

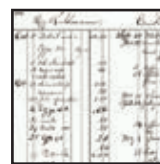
KIT CALCULATIONS		
<b>FOWL PLAY QUILT</b>	12 KITS	
Size: 67½" x 97½" SKU: P3621 ALL	YARDS	BOLTS
		
26465 E (one 24" repeat - 3 rows)	¾	1
26467 K	2½	2
26470 E	3¾	3
26472 R (binding only)	¾	1
26467 E (backing only)	6	6*
Number of bolts is based on continuous cuts *Based on two complete cuts per bolt		
Approx. TOTAL YARDS IN QUILT: 7¾ (Total yardage does not include suggested backing)		



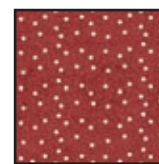
26465 E



26467 K



26470 E



26472 R  
binding only



26467 E  
backing only

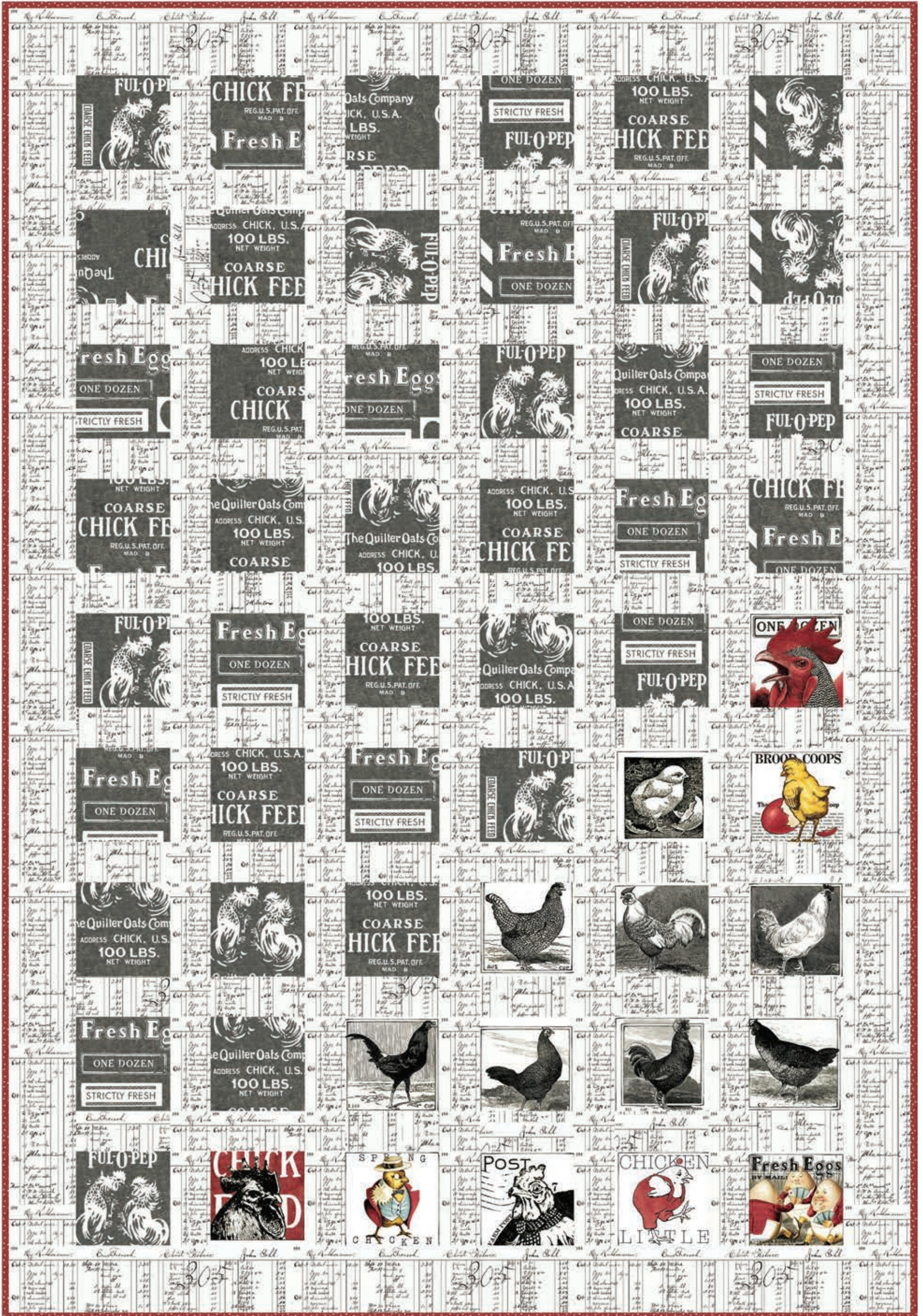
Fowl Play complete Collection includes 9 Prints / 20 Bolts

Note: Yardage amounts shown are calculated based on standard editorial guidelines and feature commonly used cuts. Please refer to the cutting information for the exact size of each piece. You will want to base your kit fee on the piece cuts rather than the full yardage amount. As always, we recommend that you make a shop sample prior to creating any kit.

Please note that these yardage amounts are the designer's estimates only. Some changes may occur when the project instructions are written.

See reverse side





Quilt Size: 67½" x 97½"  
Designed by: Janet Wecker-Frisch



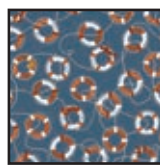


Quilt Size: 68" x 79"  
Designed by: Wendy Sheppard

KIT CALCULATIONS		
IN DEEP SHIP QUILT		12 KITS
Size: 68" x 79" SKU: P3636 ALL	YARDS	BOLTS
24299 A Pixie Dots	5/8	1
26456 W	1/2	1
26455 W	1/2	1
26458 O (also binding)	1	1
26455 Z	1	1
22083 Z* Illusions	2 1/8	3
26454 W	1 3/8	2
24299 QH Pixie Dots	3/8	1
26456 B	5/8	1
26456 W (backing only)	5	4
<i>*Illusions based on 12 yd bolts</i>		
Approx. TOTAL YARDS IN QUILT: 8 3/8 (Total yardage does not include suggested backing)		
Number of bolts is based on continuous cuts		



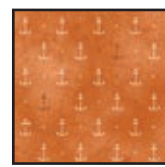
24299 A  
Pixie Dots



26456 W  
also backing



26455 W



26458 O  
also binding



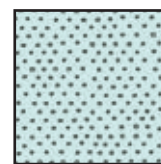
26455 Z



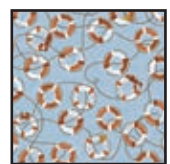
22083 Z  
Illusions



26454 W



24299 QH  
Pixie Dots



26456 B

In Deep Ship complete Collection includes 5 Prints / 11 Bolts


Note: Yardage amounts shown are calculated based on standard editorial guidelines and feature commonly used cuts. Please refer to the cutting information for the exact size of each piece. You will want to base your kit fee on the piece cuts rather than the full yardage amount. As always, we recommend that you make a shop sample prior to creating any kit.

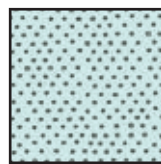
Please note that these yardage amounts are the designer's estimates only. Some changes may occur when the project instructions are written.



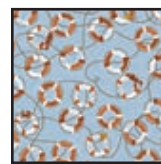


Pillow Size: 18" x 18"  
Designed by: Wendy Sheppard

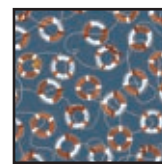
KIT CALCULATIONS		
<b>IN DEEP SHIP PILLOW</b>		12 KITS
Size: 18" x 18" SKU: P36361 ALL 	YARDS	BOLTS
24299 QH Pixie Dots	1/8	1
26456 B	1/8	1
26456 W	1/8	1
26458 O	1/8	1
26455 Z	1 1/4	1
*ADDITIONAL SUPPLIES NEEDED: 1 - 18" Pillow Form		
Approx. TOTAL YARDS IN PILLOW: 1 3/4		



24299 QH  
Pixie Dots



26456 B



26456 W



26458 O



26455 Z

In Deep Ship complete Collection includes 5 Prints / 11 Bolts

*Note: Yardage amounts shown are calculated based on standard editorial guidelines and feature commonly used cuts. Please refer to the cutting information for the exact size of each piece. You will want to base your kit fee on the piece cuts rather than the full yardage amount. As always, we recommend that you make a shop sample prior to creating any kit.*


*Please note that these yardage amounts are the designer's estimates only. Some changes may occur when the project instructions are written.*



Panel Quilt



Quilt Size: 53" x 64½"  
Designed by: Wendy Sheppard

KIT CALCULATIONS		
QUILTED COTTAGE PANEL QUILT		12 KITS
Size: 53" x 64½" SKU: P36171 ALL 	YARDS	BOLTS
26422 X (1 Panel)	2/3	1
26429 H	1/4	1
26428 R	7/8	1
26427 Q	1/8	1
26430 P (also binding)	3/4	1
26424 E	3/4	1
22083 Z* Illusions	1 1/8	2
26430 S	3/8	1
26429 Q	3/8	1
26424 E (backing only)	4 1/8	4
*Illusions based on 12 yd bolts		
Approx. TOTAL YARDS IN QUILT: 5 (Total yardage does not include suggested backing)		
Number of bolts is based on continuous cuts		



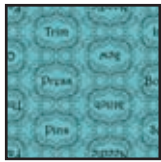
26422 X



26429 H



26428 R



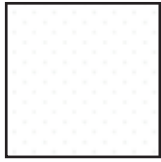
26427 Q



26430 P  
also binding



26424 E  
also backing



22083 Z  
Illusions



26430 S



26429 Q

Quilted Cottage complete Collection includes 7 Prints / 16 Bolts

Note: Yardage amounts shown are calculated based on standard editorial guidelines and feature commonly used cuts. Please refer to the cutting information for the exact size of each piece. You will want to base your kit fee on the piece cuts rather than the full yardage amount. As always, we recommend that you make a shop sample prior to creating any kit.

Please note that these yardage amounts are the designer's estimates only. Some changes may occur when the project instructions are written.



Panel Quilt

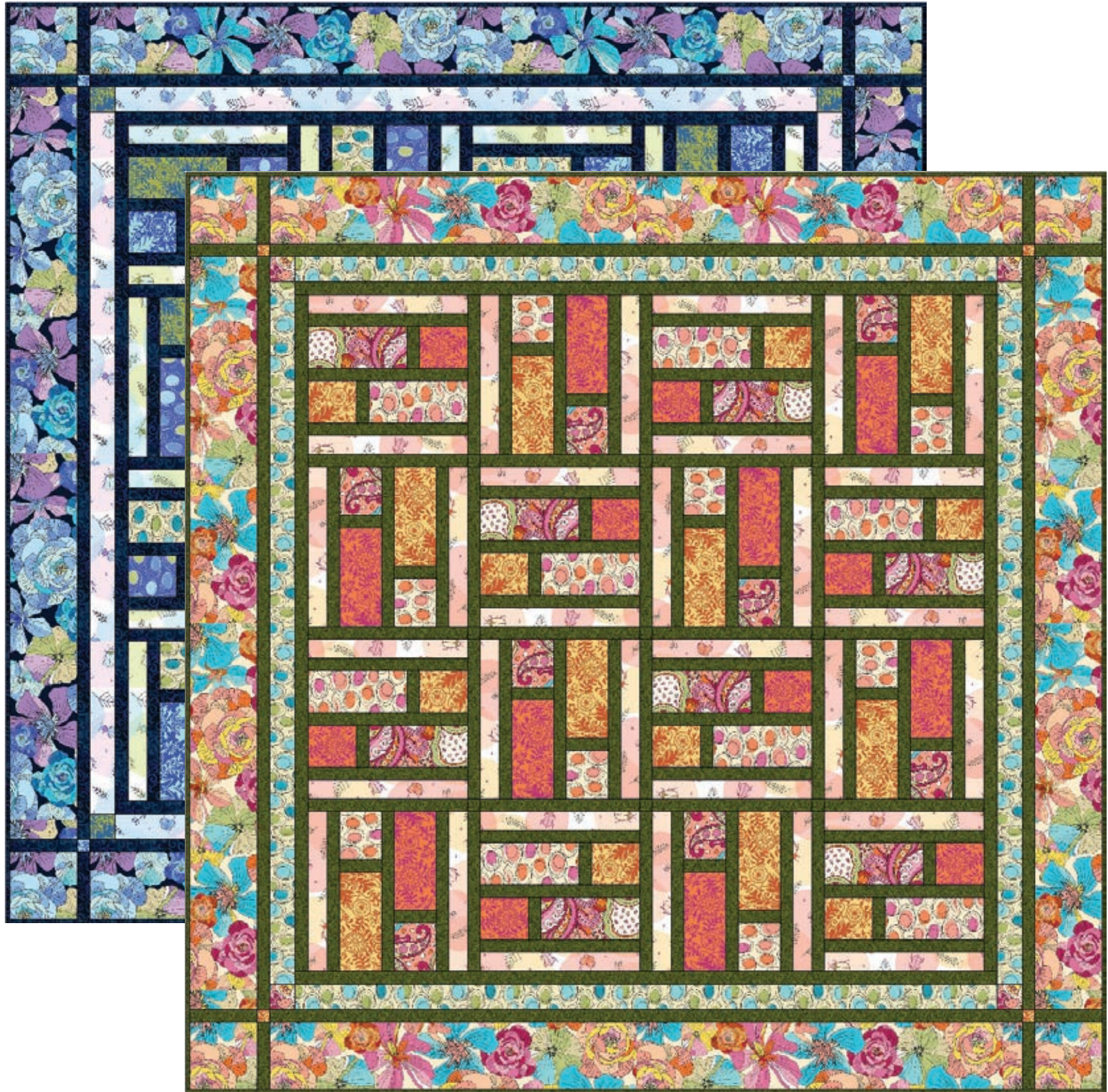


Quilt Size: 53" x 64½"  
Designed by: Wendy Sheppard



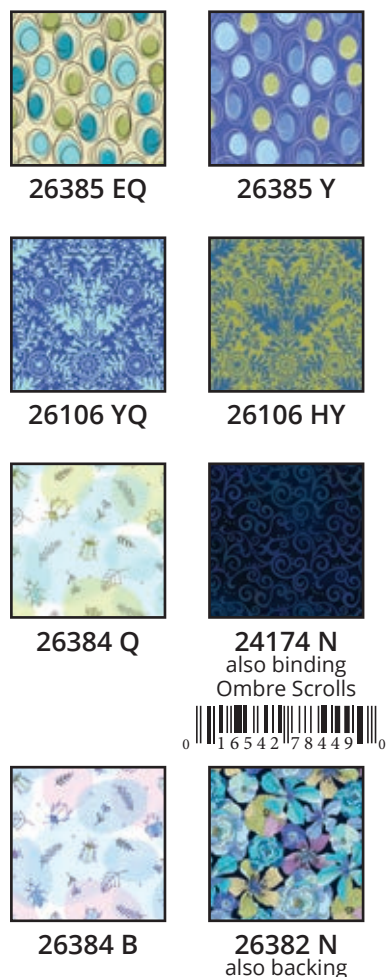
# THALIA

## DASHING QUILT

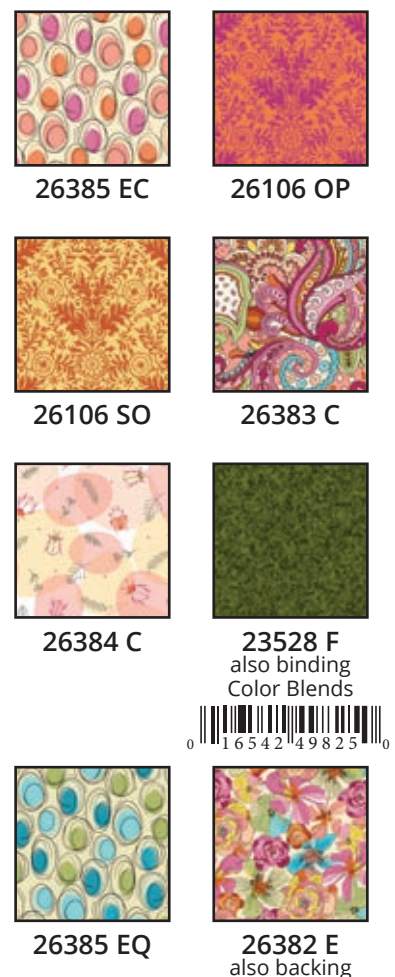


Quilt Size: 54 1/2" x 54 1/2"  
Designed by: Janice Averill

KIT CALCULATIONS		
BLUE QUILT		12 KITS
Size: 54 1/2" x 54 1/2"	YARDS	BOLTS
SKU: P3625 ALL 		
26385 EQ	3/8	1
26385 Y	3/8	1
26106 YQ	1/2	1
26106 HY	1/2	1
26384 Q	3/8	1
24174 N* (also binding)	1 2/3	2
26384 B	3/8	1
26382 N	1 3/8	2
26382 N (backing)	3 1/2	3
*From the Ombre Scrolls line		
Approx. TOTAL YARDS IN QUILT: 5 1/2 (Total yardage does not include suggested backing)		
Number of bolts is based on continuous cuts		



KIT CALCULATIONS		
PINK QUILT		12 KITS
Size: 54 1/2" x 54 1/2"	YARDS	BOLTS
SKU: P36251 ALL 		
26385 EC	3/8	1
26106 OP	3/8	1
26106 SO	1/2	1
26383 C	1/2	1
26384 C	3/8	1
23528 F* (also binding)	1 2/3	2
26385 EQ	3/8	1
26382 E	1 3/8	2
26382 E (backing)	3 1/2	3
*Color Blends based on 12 yd bolts		
Approx. TOTAL YARDS IN QUILT: 5 1/2 (Total yardage does not include suggested backing)		
Number of bolts is based on continuous cuts		



Thalia complete Collection includes 5 Prints / 12 Bolts

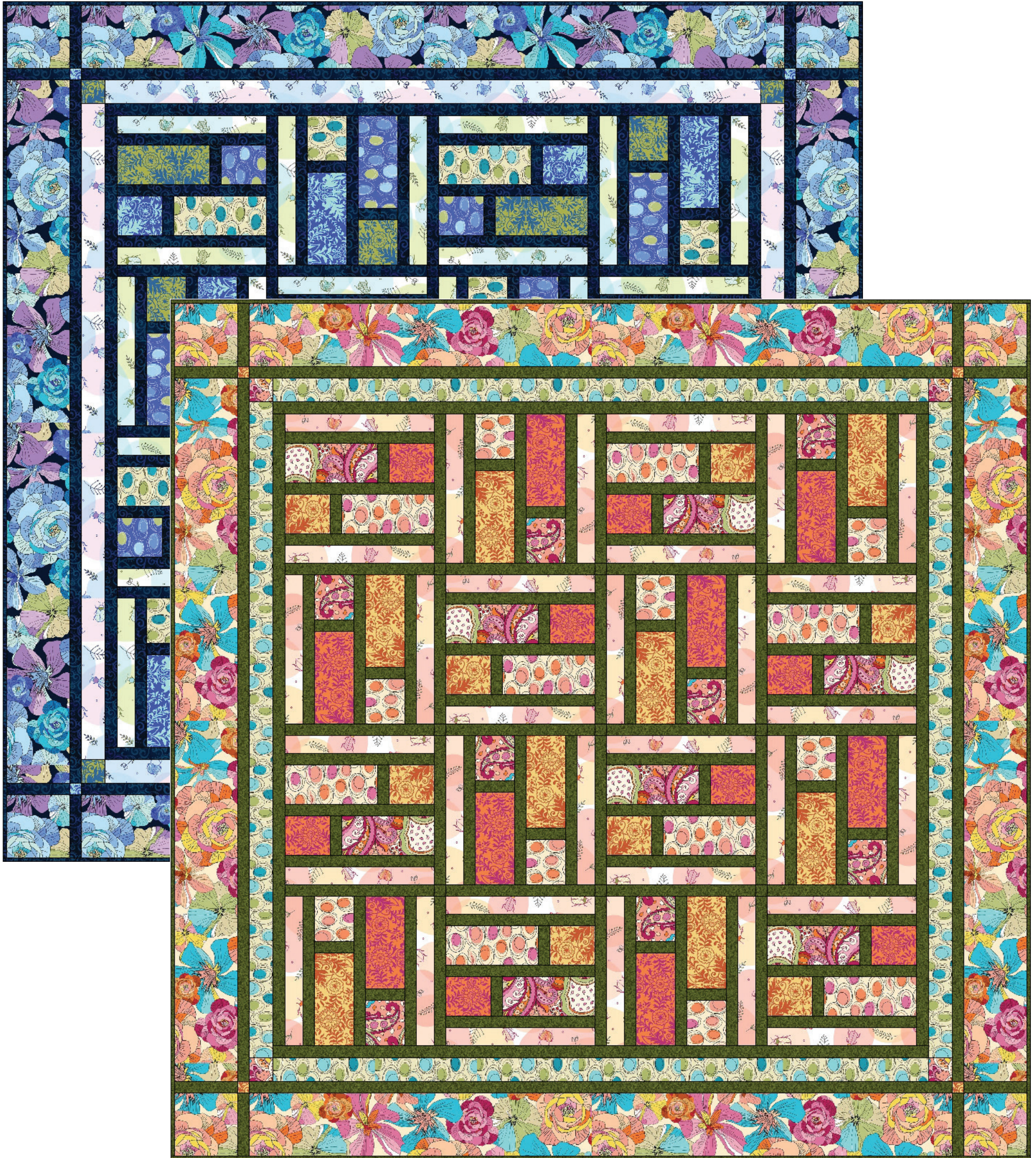
Note: Yardage amounts shown are calculated based on standard editorial guidelines and feature commonly used cuts. Please refer to the cutting information for the exact size of each piece. You will want to base your kit fee on the piece cuts rather than the full yardage amount. As always, we recommend that you make a shop sample prior to creating any kit.

Please note that these yardage amounts are the designer's estimates only. Some changes may occur when the project instructions are written.



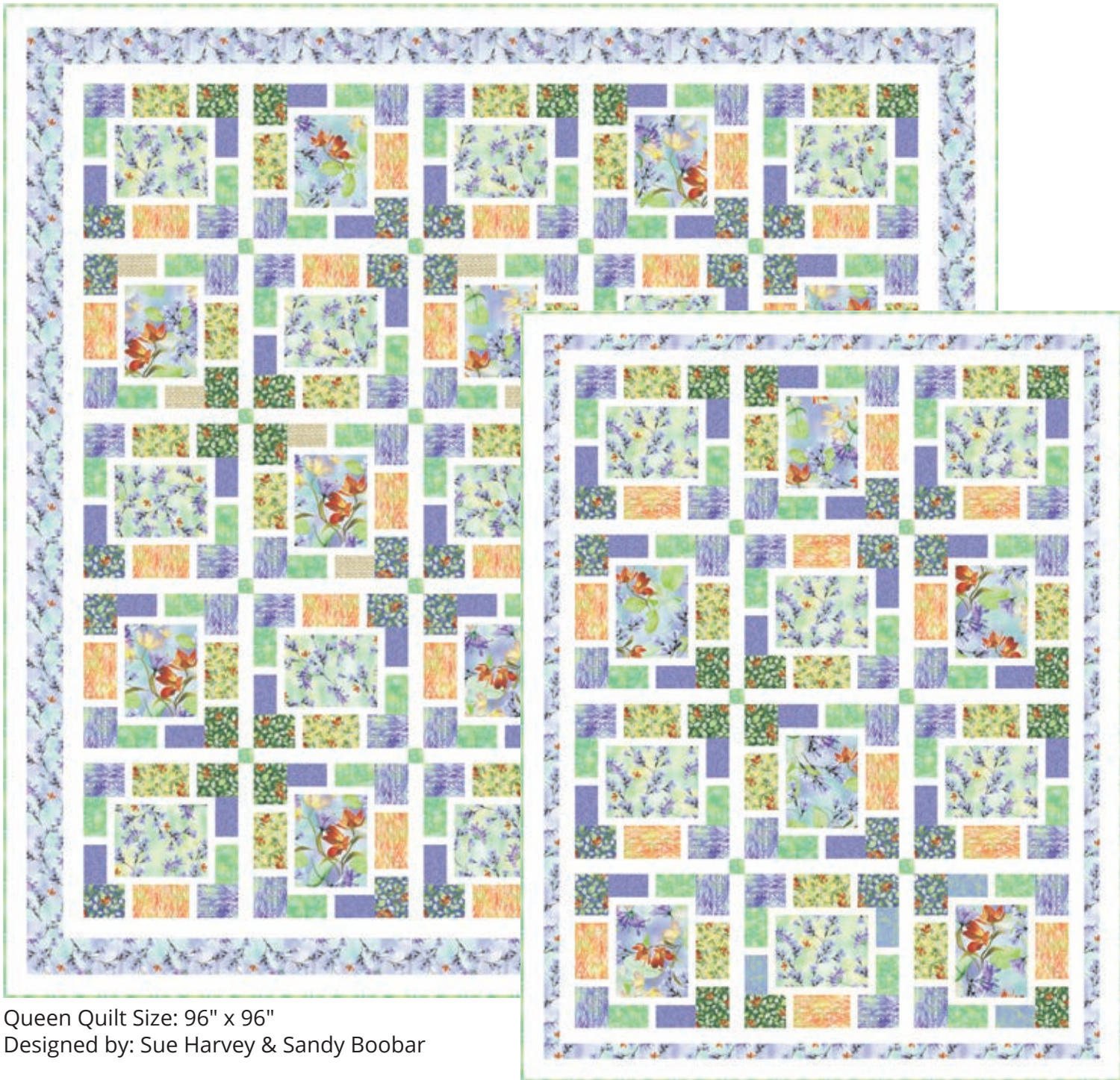
# THALIA

## DASHING QUILT



Quilt Size: 54 ½" x 54 ½"  
Designed by: Janice Averill

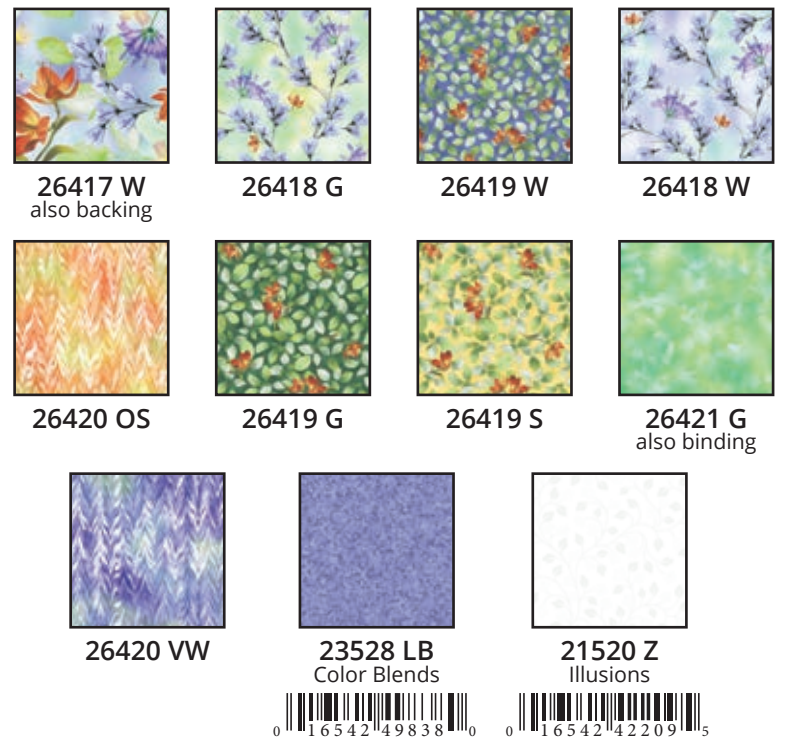




Queen Quilt Size: 96" x 96"  
Designed by: Sue Harvey & Sandy Boobar

Throw Quilt Size: 58" x 74 1/2"

KIT CALCULATIONS			KIT CALCULATIONS		
QUEEN QUILT		12 KITS	THROW QUILT		12 KITS
Size: 96" x 96" SKU: P3623 ALL	YARDS	BOLTS	Size: 58" x 74 1/2" SKU: P36231 ALL	YARDS	BOLTS
26417 W	1	1	26417 W	2/3	1
26418 G	7/8	1	26418 G	5/8	1
26419 W	1/2	1	26419 W	3/8	1
26418 W	1 1/4	1	26418 W	1/2	1
26420 OS	5/8	1	26420 OS	1/2	1
26419 G	1/2	1	26419 G	3/8	1
26419 S	5/8	1	26419 S	1/2	1
26421 G (also binding)	1 5/8	2	26421 G (also binding)	1 1/8	1
26420 VW	3/4	1	26420 VW	1/2	1
23528 LB* Color Blends	5/8	1	23528 LB* Color Blends	3/8	1
21520 Z* Illusions	4	4	21520 Z* Illusions	2 1/4	3
26417 W (backing only)	8 3/8	12	26417 W (backing only)	4 3/4	4
*Color Blends & Illusions based on 12 yd bolts			*Color Blends & Illusions based on 12 yd bolts		
Approx. TOTAL YARDS IN QUILT: 12 3/8 (Total yardage does not include suggested backing)			Approx. TOTAL YARDS IN QUILT: 7 3/4 (Total yardage does not include suggested backing)		



Belle complete Collection includes 5 Prints / 12 Bolts

Wholesale and retail patterns available at:  
Pine Tree Country Quilts  
PO 343 • Stillwater, ME 04489  
(207) 827-3876 • www.pinetreecountryquilts.com

Pattern Name: Easy Breezy Belle  
Pattern Number: PT1637  
Retail Price: \$10.50

Distributor sales:  
Checker Distributors  
www.checkerdist.com • (800) 537-1060

Pattern cover will reflect the image of this quilt  
3 patterns minimum for wholesale orders





Queen Quilt Size: 96" x 96"  
Designed by: Sue Harvey & Sandy Boobar

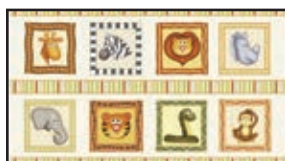
Throw Quilt Size: 58" x 74½"





Quilt Size: 60" x 60"  
Designed by: Sue Harvey & Sandy Boobar

KIT CALCULATIONS		
Jungle Buddies		12 KITS
Size: 60" x 60" SKU: P3628 ALL	YARDS	BOLTS
26411 E (1 panel)	2/3	1
26413 S	1 5/8	2
26412 E	1/2	1
26414 S	3/8	1
26415 J (also binding)	1 5/8	2
26415 G	2/3	1
26416 J	5/8	1
26416 G	5/8	1
26412 G (backing)	4	4
Approx. TOTAL YARDS IN QUILT: 6 3/4 (Total yardage does not include suggested backing)		



26411 E



26413 S



26412 E



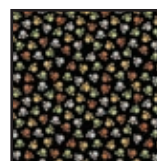
26414 S



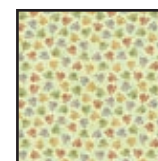
26415 J  
also binding



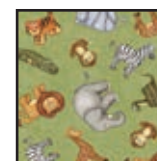
26415 G



26416 J



26416 G



26412 G  
backing only

Jungle Buddies complete Collection includes 6 Prints /16 Bolts

Wholesale and retail patterns available at:  
Pine Tree Country Quilts  
PO 343 • Stillwater, ME 04489  
(207) 827-3876 • www.pinetreecountryquilts.com

Pattern Name: Jungle Buddies  
Pattern Number: PT1634  
Retail Price: \$9.50

Distributor sales:  
Checker Distributors  
www.checkerdist.com • (800) 537-1060

Pattern cover will reflect the image of this quilt  
3 patterns minimum for wholesale orders





# Jungle Buddies



Quilt Size: 60" x 60"  
Designed by: Sue Harvey & Sandy Boobar

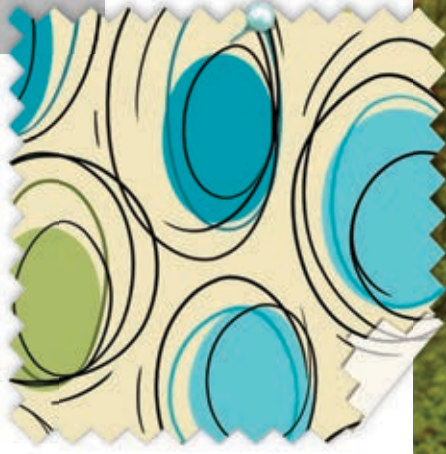




# THALIA



Project from Indygo Junction: IJ941 Ruffle Trio Large



Project from Indygo Junction: Banded Beauty



Project from Serendipity Studio: Sally Shirtdress



Project from Lazy Girl Designs: Bendy Bag



# The Quilted Cottage

Desiree's  
Designs



Project from Lazy Girl Designs: Tray Chic - Circle



Project from Lazy Girl Designs: Becca Pouches

Images are for inspiration only unless otherwise noted. Similar projects can be found online.



# Where the Wise Things Are



Project from Lazy Girl Designs: Tray Chic - Hexi



Project from Indygo Junction: IJ886 Quick Tie Top



Images are for inspiration only unless otherwise noted. Similar projects can be found online.

